



Training Manuals on Integrated Solid Waste Management

Mushtaq Ahemd MEMON
International Environmental Technology Centre (IETC)
OSAKA - JAPAN



Training Manuals

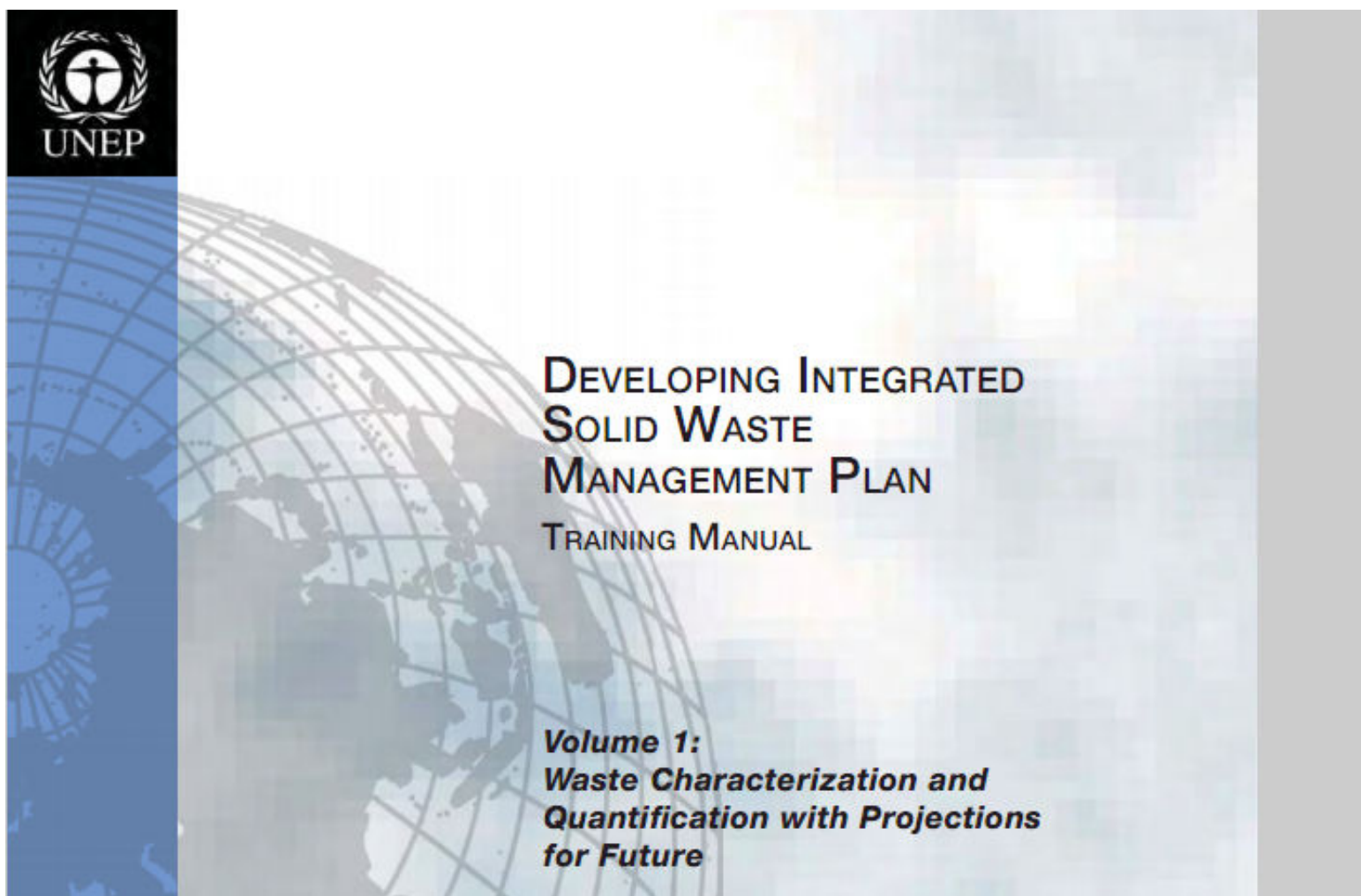


1. Waste Data (characterization, quantification and projections)
2. Assessment of Waste Management System (Policy, Institutions, Financing, Technology and Stakeholders)
3. Targets and Stakeholders' Concerns (environmental, financial, technology and cultural)
4. ISWM Plan (policy, technical and voluntary interventions)



Training Manual 1

Collection of Waste Data



http://www.unep.or.jp/ietc/Publications/spc/ISWMPlan_Vol1.pdf

Utility of Waste Data



- ❖ Developing an integrated solid waste management plan;
- ❖ Generating comprehensive information on the quantity and type of recyclable and recoverable materials/energy to prioritize the recovery opportunities;
- ❖ Developing baseline for continued long-term measurement of system performance;
- ❖ Generating information on the different sub-streams of waste to design, implement and monitor an effective and efficient system for collection, transportation, recycling, treatment, recovery, and disposal of various streams of solid waste; and
- ❖ Providing comparison of waste composition and waste diversion accomplishments for continuing improvements in integrated solid waste management



Important Factors



❖ Resources

- Cost of sample collection & analysis
- Technical expertise
- Laboratory facilities
- Sample collection & sorting equipment

❖ Considerations

- Health and environmental risks
- Seasonal variations
- Number & timings of sample collection



Roadmap 1



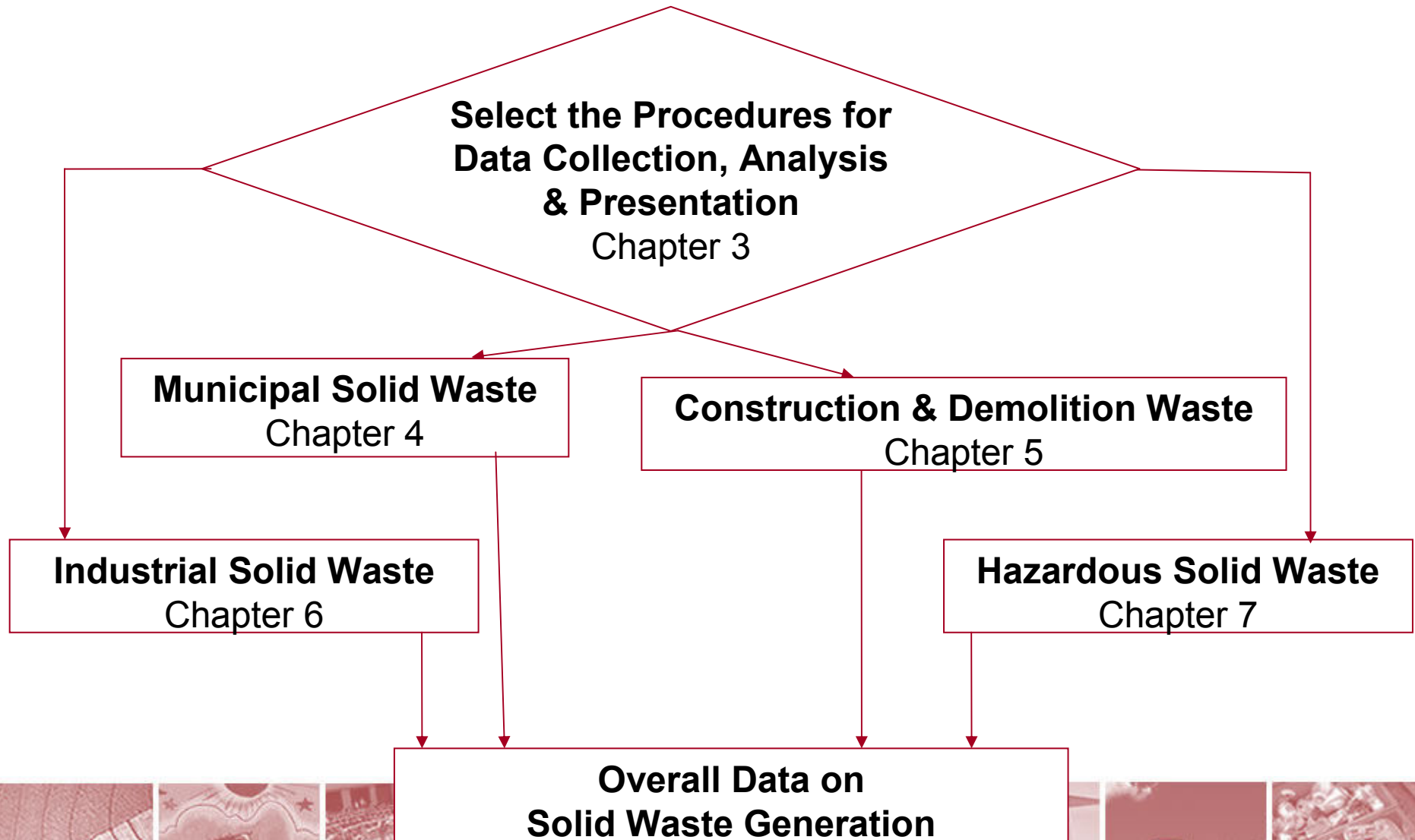
Define Geo-Administrative Boundaries

Define the Waste Generation Sectors
Residential, Commercial, Healthcare, Laboratories,
Industrial and
Construction and Demolition

Define
Municipal and non-municipal Waste
Hazardous and non-hazardous waste

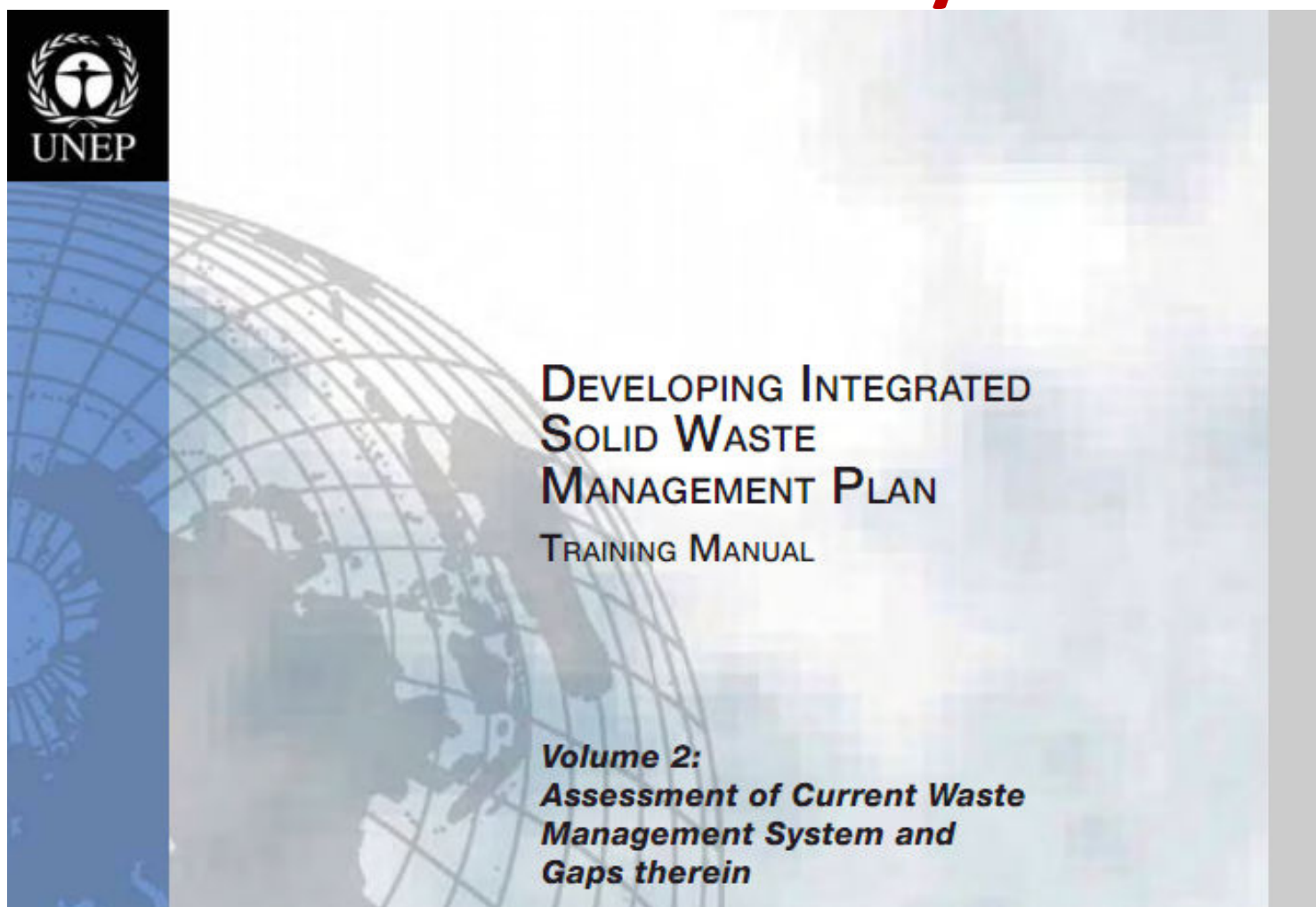
Collect Information / Maps
Zoning (residential, commercial, industrial)
Demographic (current & future)
Socioeconomic characteristics
Waste generation rates
Primary data on solid waste

Roadmap 2



Training Manual 2

Assessment of the System



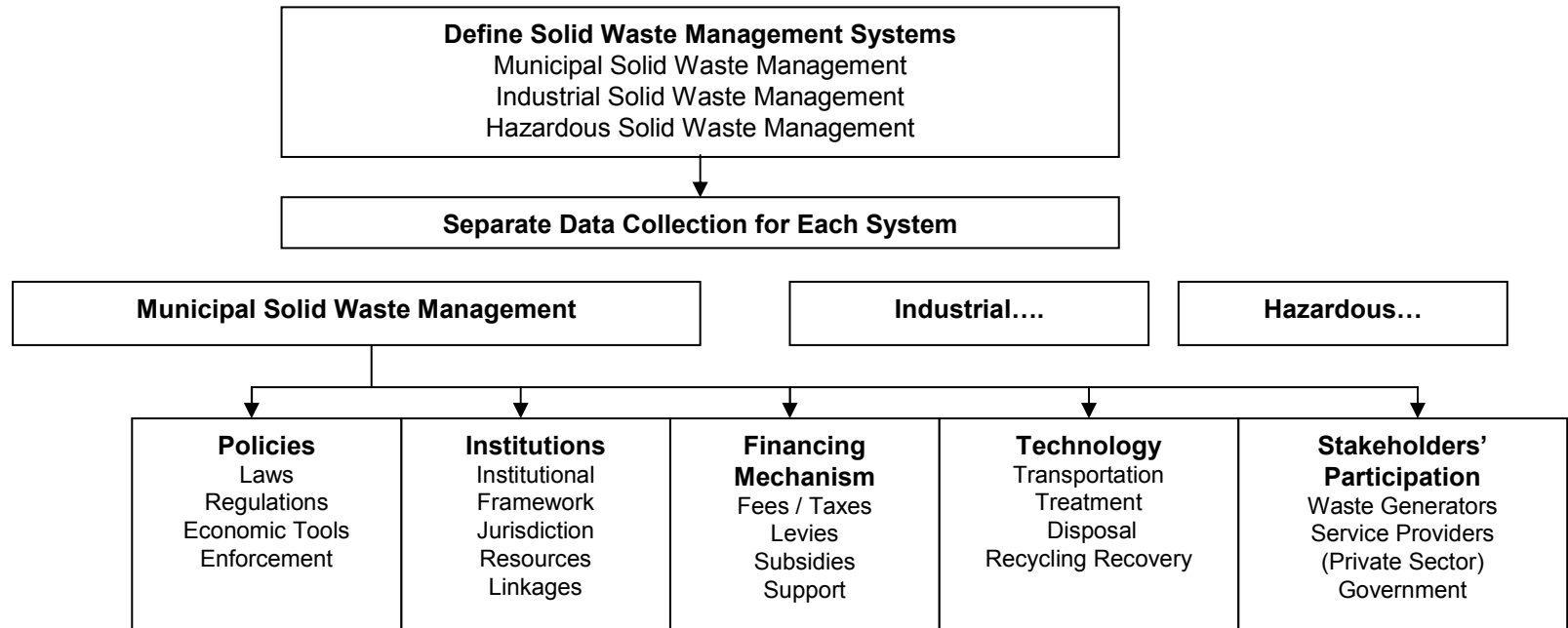
http://www.unep.or.jp/ietc/Publications/spc/ISWMPlan_Vol2.pdf

Assessment of Waste Management System

| Regulations | Institutions | Financial Mechanisms | Technology & Infrastructure | Stakeholder participation |
|--|---|--|---|---|
| Regulatory and economic policies for various waste streams / sources | Institutional framework, resources and jurisdiction to manage various waste streams / sources | Financing provisions including subsidies, levies, charges and private sector participation | Collection and transportation Treatment and disposal Recycling and recovery | Role of Waste generators Role of private sector for waste management services and for recycling and recovery |
| Challenges and Opportunities | | | | |



Roadmap for Assessment



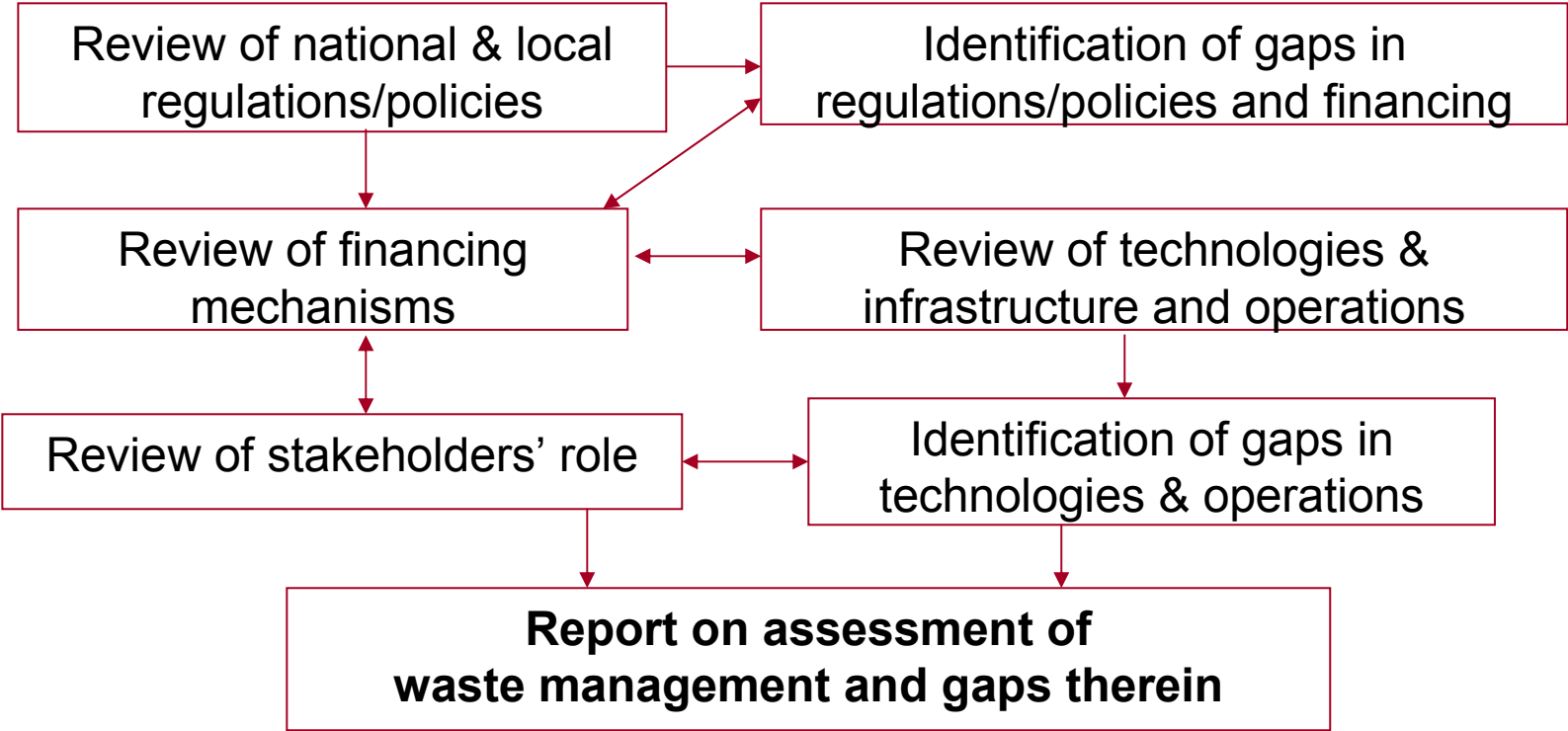
| |
|---|
| Source Reductions / "Upstream" |
| Primary Disposal by Waste Generators |
| Collection and Transportation |
| Treatment and Disposal |
| Reuse, Recycling and Recovery |



Assessment Report



Review of prevailing waste management system & practices





Training Manual 3

Targets & Stakeholders' Issues



http://www.unep.or.jp/ietc/Publications/spc/ISWMPlan_Vol3.pdf

Target Setting



Mission/Vision
Statements

Social/Political
Agenda

Statements related with Waste Management, Public Health,
Environment, etc.

Draft of Quantitative & Measurable Targets for Short-term &
Long-term

Stakeholders'
Consultations

Targets

