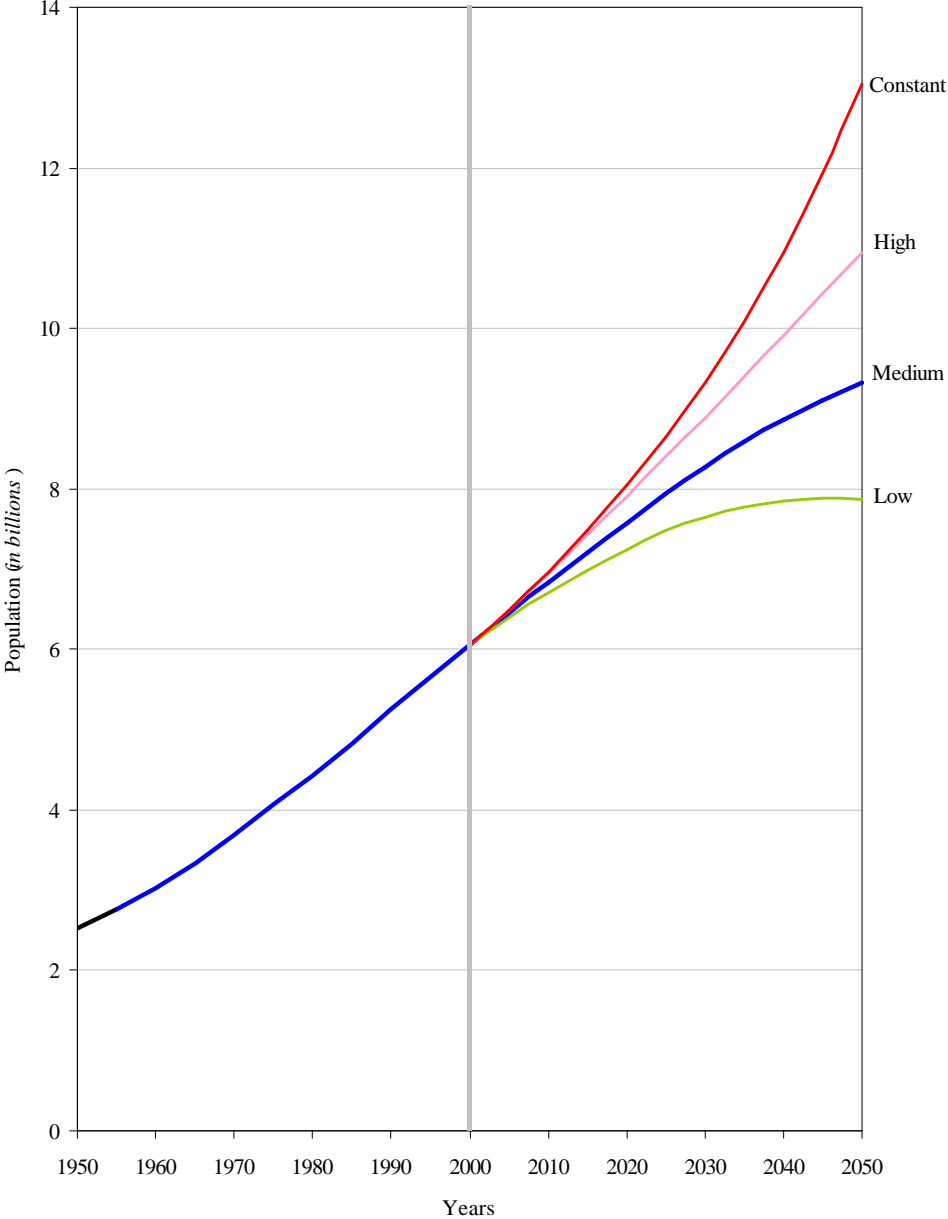
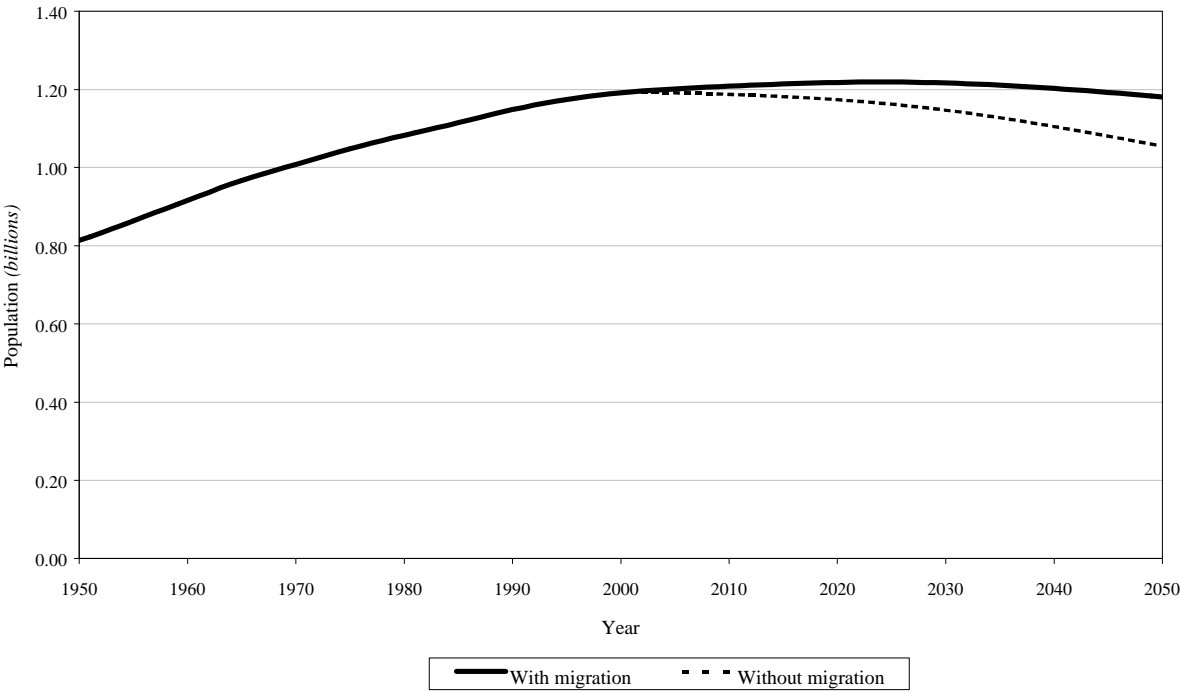


Figure 1. Estimated and projected population of the world by projection variant, 1950-2050



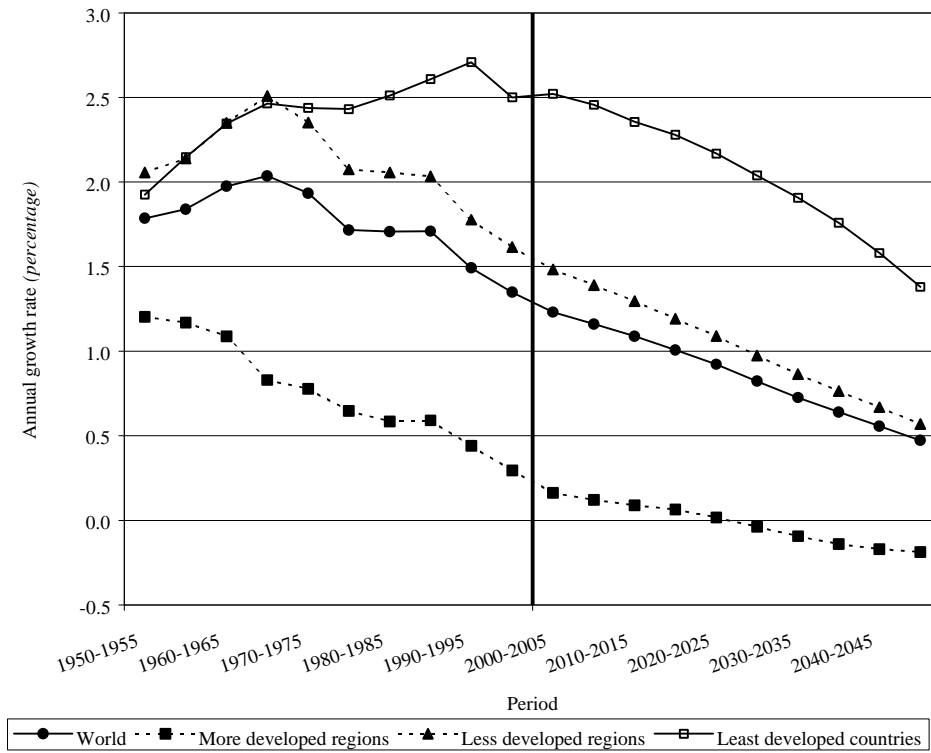
Source: United Nations Population Division.

Figure 2. Population estimates of more developed regions, 1950-2000 and projections with and without migration, 2000-2050 (medium variant)



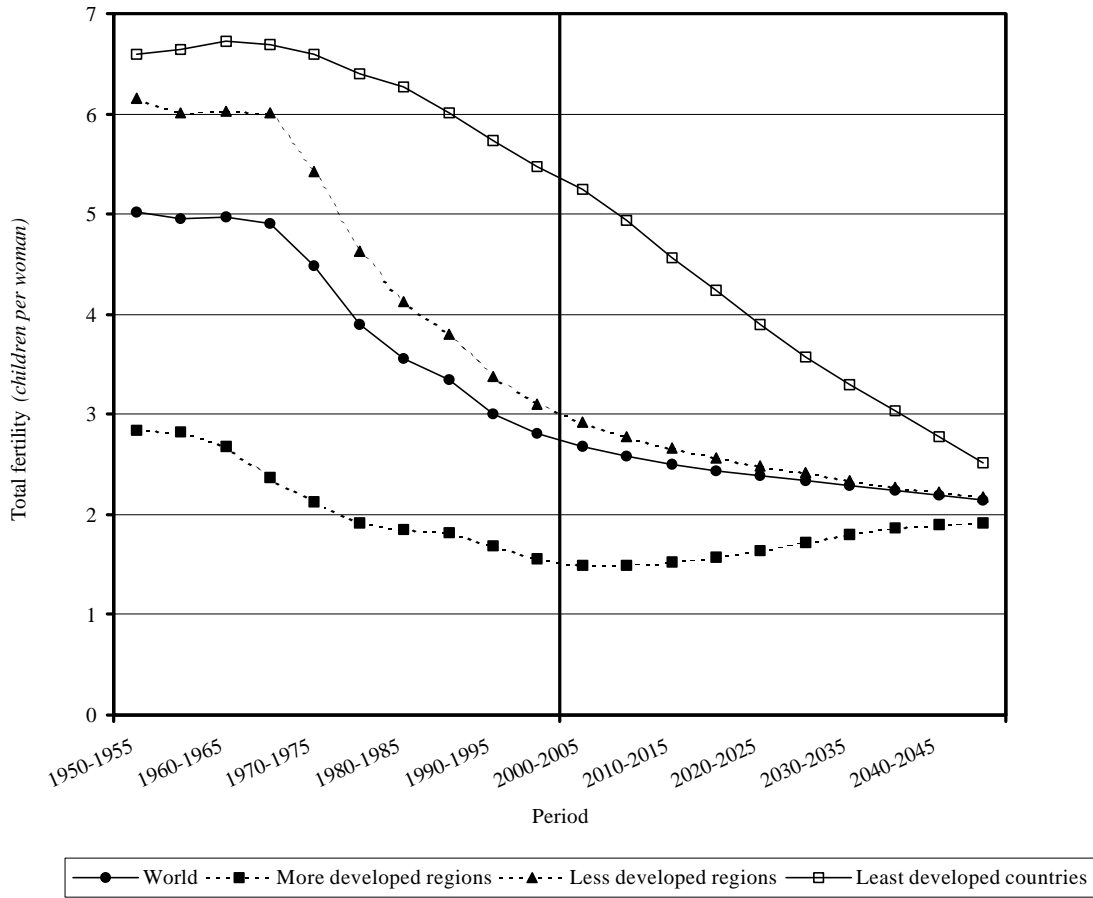
Source: United Nations Population Division.

Figure 3. Annual growth rate for the world and major development groups, 1950-2050



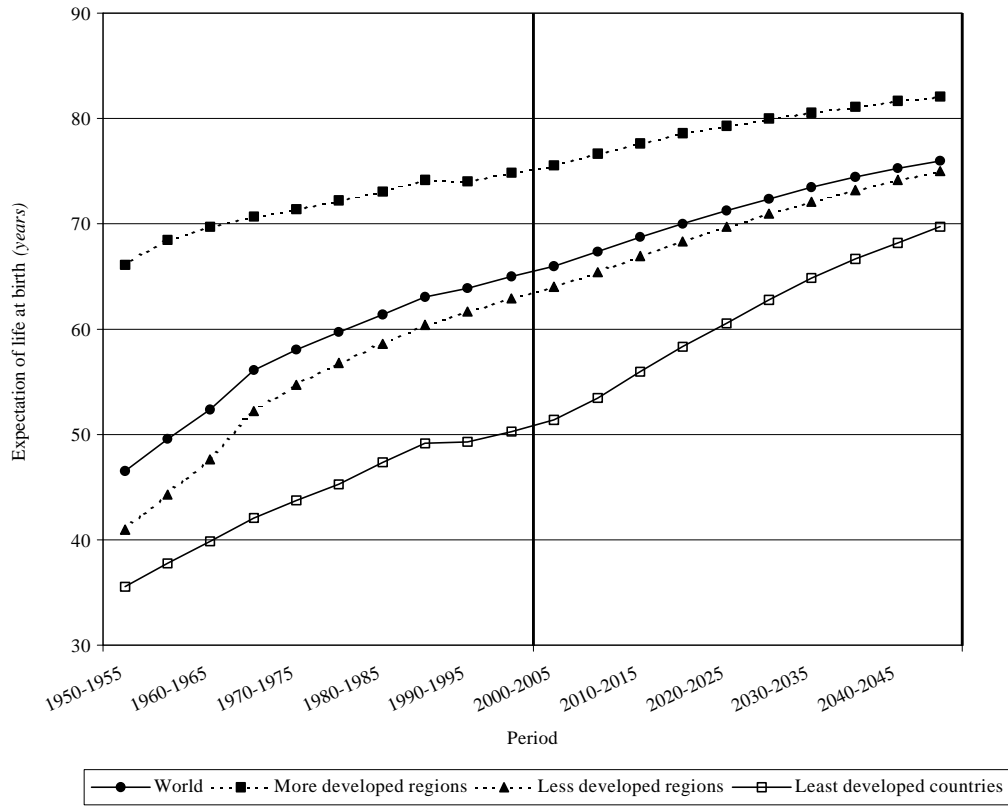
Source: United Nations Population Division.

Figure 4. Total fertility trajectories in the medium variant for the world and major development groups, 1950-2050



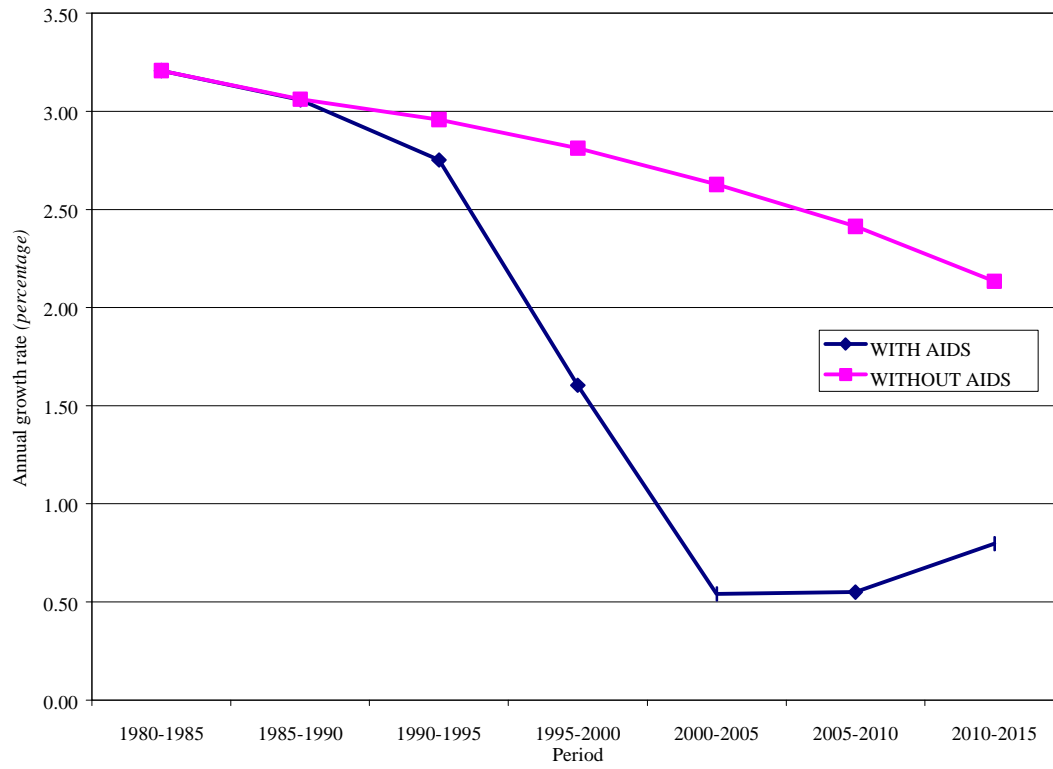
Source: United Nations Population Division.

Figure 5. Expectation of life for the world and major development groups, 1950-2050



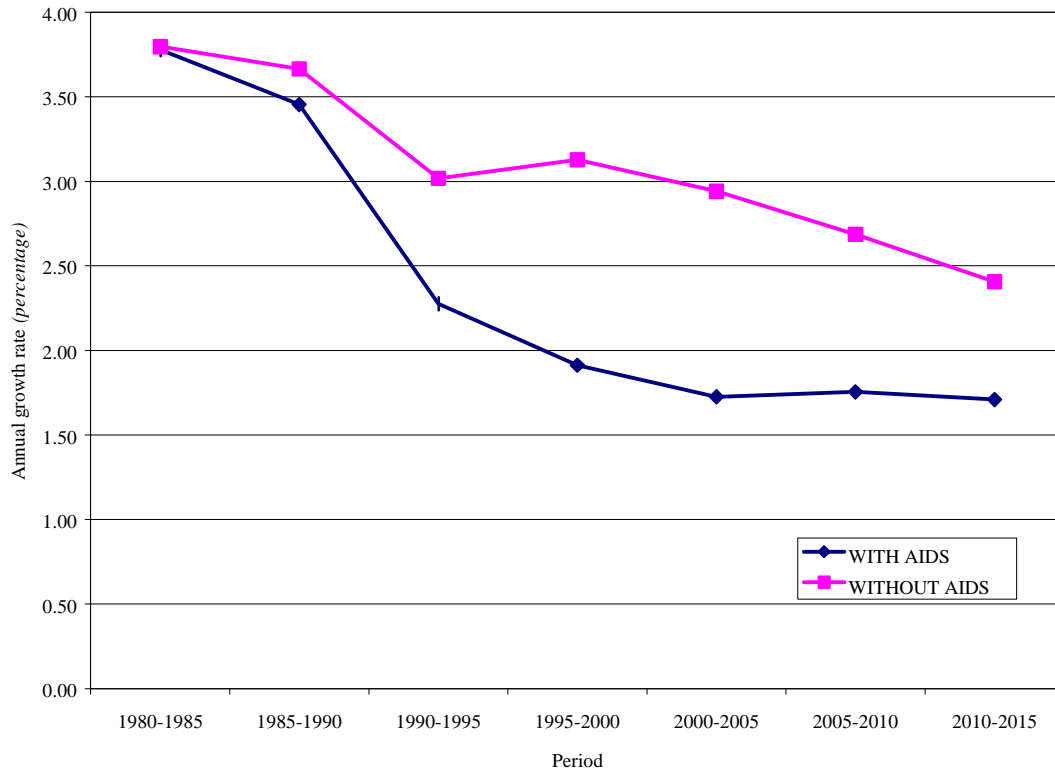
Source: United Nations Population Division.

Figure 6. Annual population growth rate, Botswana, 1980-1985 to 2010-2015



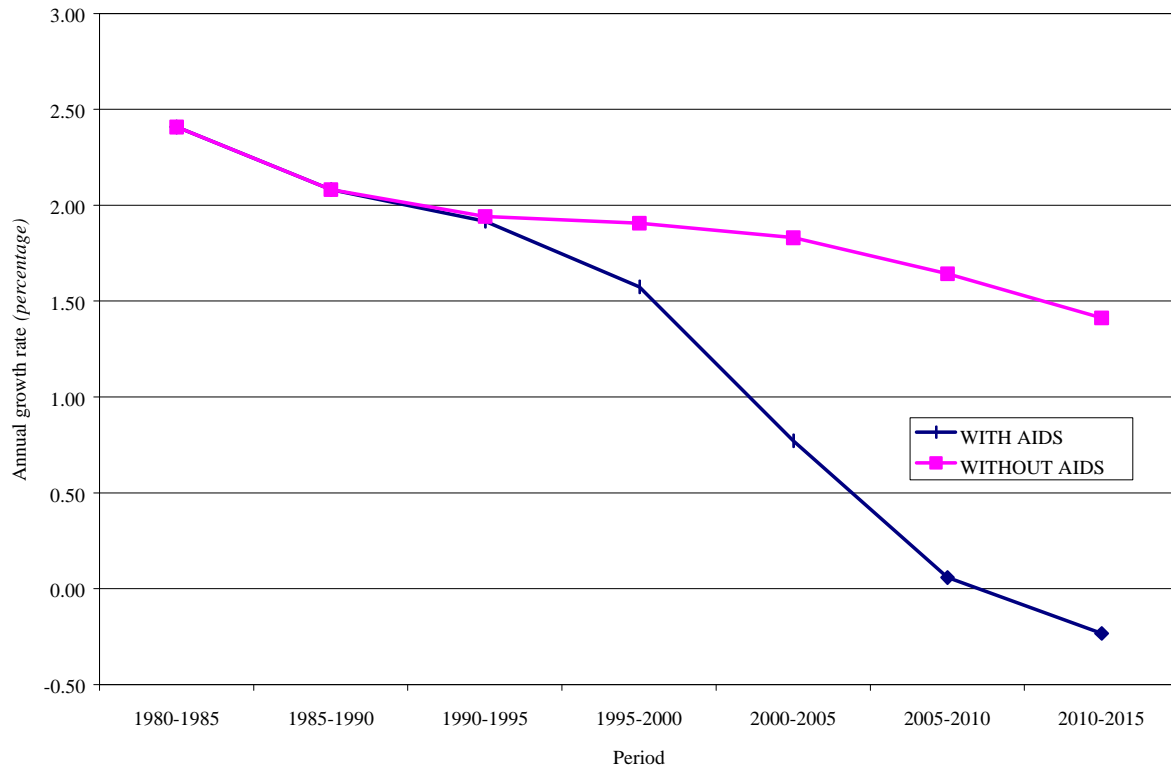
Source: United Nations Population Division.

Figure 7. Annual population growth rate, Zimbabwe, 1980-1985 to 2010-2015



Source: United Nations Population Division.

Figure 8. Annual population growth rate, South Africa, 1980-1985 to 2010-2015



Source: United Nations Population Division.