

**Innovations in philanthropy:  
how to scale them up and contribute to  
national development priorities**

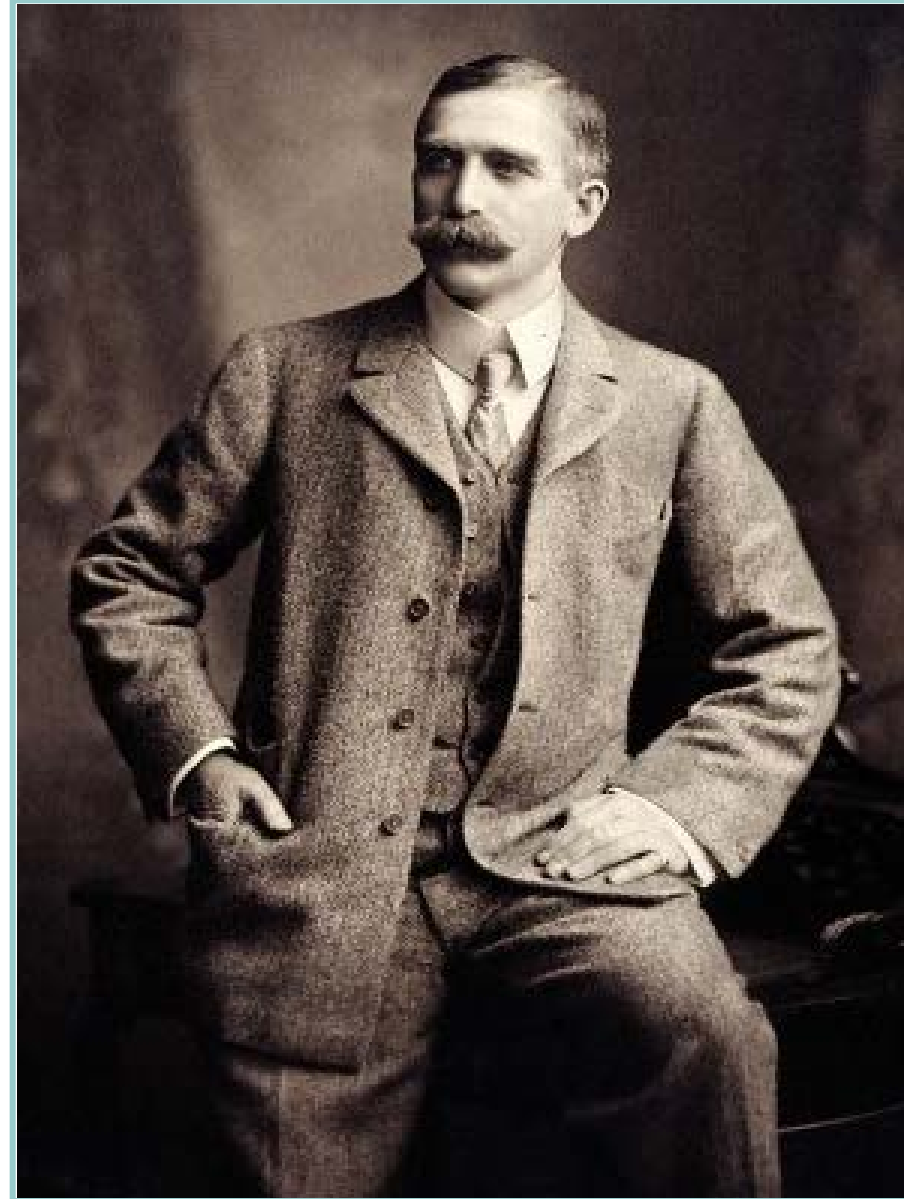
**David Lynn**

# Wellcome Trust

Our vision is to create extraordinary improvements in human and animal health

We do this by supporting the brightest minds in biomedical science and the medical humanities

- independent
- global-funder: not a donor
- long-term
- catalytic
- innovative
- risk appetite
- partnership

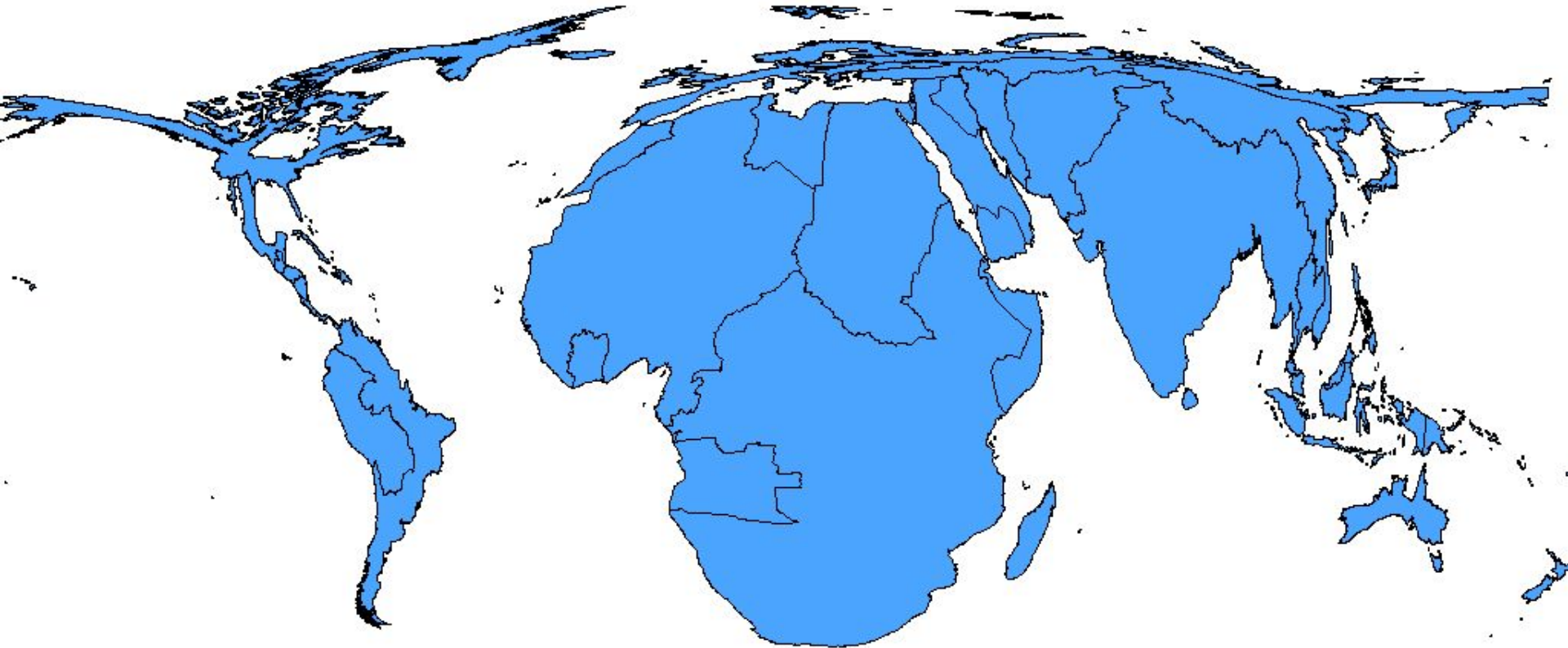


# Unstable, unsustainable, unequal

- volatile financial markets
- rising costs of energy
- food insecurity
- threat of pandemics
- unpredictable changes in climate
- national security & terrorism



# Impacts will be greatest in LMICs



Deaths from malaria & dengue fever, diarrhoea, malnutrition, flooding and (OECD countries) heatwaves

WHO regions scaled according to estimated mortality (per million people) in the year 2000, attributable to the climate change that occurred from 1970s to 2000 (Patz, Gibbs, et al, 2007)

# Swasthya Slate



Swasthya Slate System



Full Kit

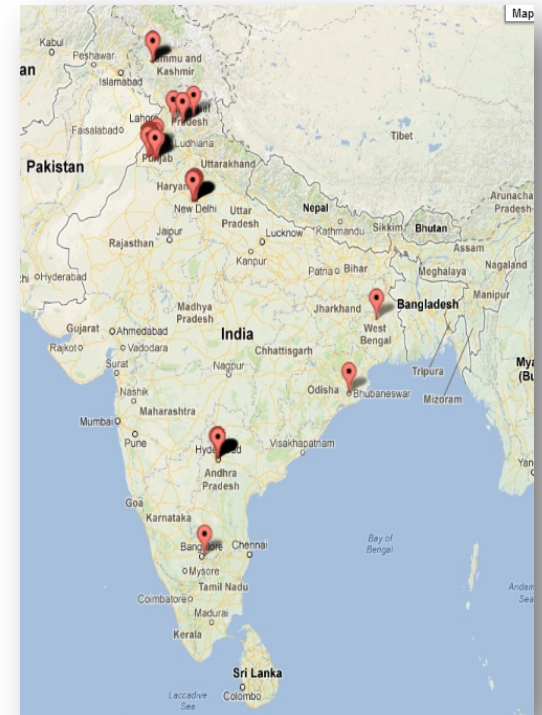
- 6 health diagnostic tests
- direct feed to EMR
- aggregation services



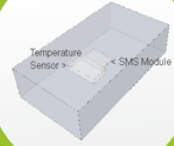
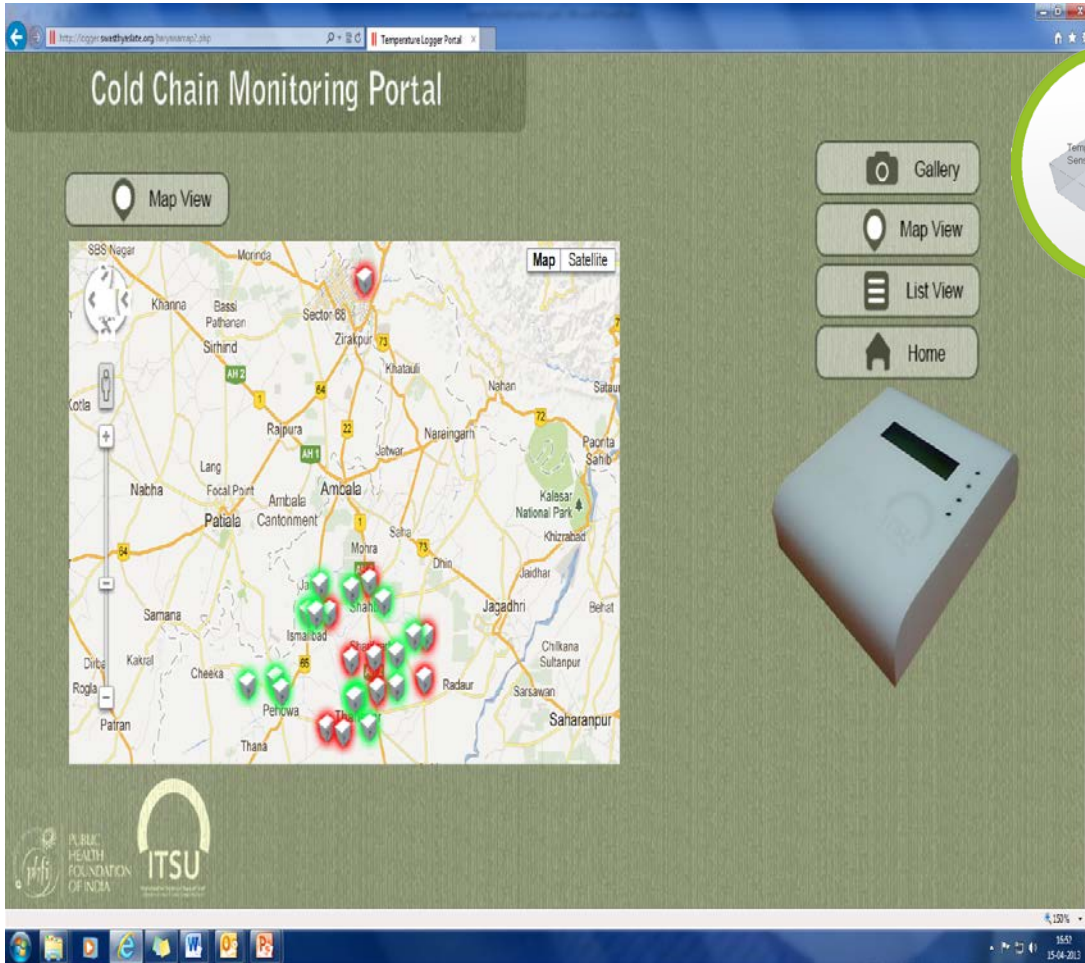
Software App  
For Online Storage,  
Decision Support and  
Reporting



ANM Training in Punjab



# Vaccines



The temperature sensing module constantly monitors the temperature of the carrier. When the temperature rises above a certain predefined value, the SMS module is activated.



The SMS module sends out an SMS to a pre-fed mobile number about the temperature status of the carrier. The mobile may be located in a centralized control room.



The SMS alert received on the phone is stored locally as well as on-to a cloud based database system for analysis and reporting purposes via an android application (developed in-house)

# African Institutions Initiative (All)

- \$46 million programme links 51 African institutions in 18 African countries with 20 'northern partners'
- Strengthening university & research institutions, at scale:
  - developing individual, institutional & national leadership
  - strengthening research training & building career pathways
  - building functions needed to deliver research excellence (governance, financial, management & administrative services)
  - creating network of African institutions
- \$68 million leveraged

