



E c o n o m i c &

S o c i a l
A f f a i r s



The World's Cities in 2018



Data Booklet

The World's Cities in 2018

In 2018, an estimated 55.3 per cent of the world's population lived in urban settlements. By 2030, urban areas are projected to house 60 per cent of people globally and one in every three people will live in cities with at least half a million inhabitants. Understanding the key trends in urbanization likely to unfold over the coming years is crucial to the implementation of the 2030 Agenda for Sustainable Development, including Sustainable Development Goal 11, to make cities and human settlements inclusive, safe, resilient and sustainable.

This data booklet highlights current and future trajectories of populations in cities around the globe, drawing on the population estimates and projections published in *World Urbanization Prospects: The 2018 Revision*. All information is available from www.unpopulation.org.

Suggested citation: United Nations, Department of Economic and Social Affairs, Population Division (2018). *The World's Cities in 2018—Data Booklet (ST/ESA/SER.A/417)*.

Cover photo: Copyright © Flickr user [thisisinBaliTimur](https://www.flickr.com/photos/thisisinbalitmur/28066940649/) (2017). Panorama Kota Jakarta. Available from <https://www.flickr.com/photos/thisisinbalitmur/28066940649/>. CC BY-SA 2.0.



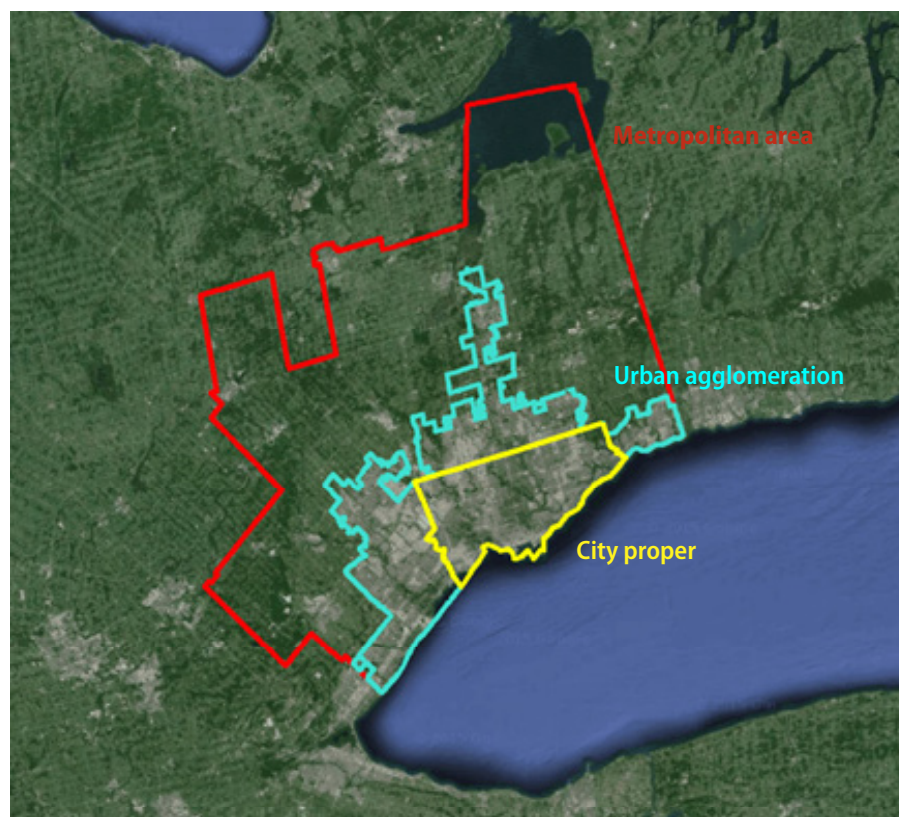
What is a City?

Most people can agree that cities are places where large numbers of people live and work; they are hubs of government, commerce and transportation. But how best to define the geographical limits of a city is a matter of some debate. So far, no standardized international criteria exist for determining the boundaries of a city and often multiple boundary definitions are available for any given city.

One type of definition, sometimes referred to as the “city proper”, describes a city according to an administrative boundary. A second approach, termed the “urban agglomeration”, considers the extent of the contiguous urban area, or built-up area, to delineate the city’s boundaries. A third concept of the city, the “metropolitan area”, defines its boundaries according to the degree of economic and social interconnectedness of nearby areas, identified by interlinked commerce or commuting patterns, for example.

The choice of how to define a city’s boundaries is consequential for assessing the size of its population. In Toronto, Canada, for example, approximately 2.6 million people resided within the “city proper” according to the 2011 census, but the population of the surrounding “urban agglomeration” was almost twice as large, at 5.1 million, and the population of the “metropolitan area” was larger still, at 5.6 million.* Furthermore, rates of population growth differed across the three definitions. Between the 2006 and 2011 censuses, the population within Toronto’s “city proper” grew at an average annual rate of 0.9 per cent, compared to 1.5 per cent for the “urban agglomeration” and 1.8 per cent for the “metropolitan area”.

The 2018 revision of *World Urbanization Prospects* (WUP) endeavoured wherever possible, given available data, to adhere to the “urban agglomeration” concept of cities. Often, however, in order to compile a series of population estimates that was consistent for a city over time, the “city proper” or “metropolitan area” concepts were used instead. Of the 1,860 cities with at least 300,000 inhabitants in 2018 included in WUP, 55 per cent follow the “urban agglomeration” statistical concept, 35 per cent follow the “city proper” concept and the remaining 10 per cent refer to “metropolitan areas”.



*The “city proper” described here, corresponds to the Toronto “census subdivision—municipality” as defined in the 2011 Census of Canada; the “urban agglomeration” corresponds to the Toronto “population centre”; and the “metropolitan area” corresponds to the Toronto “census metropolitan area.” Population data and boundaries were taken from Statistics Canada, available from <http://www12.statcan.gc.ca/census-recensement/index-eng.cfm>. Satellite image was taken from Google Imagery TerraMetrics 2016.

The world's cities are growing in both size and number

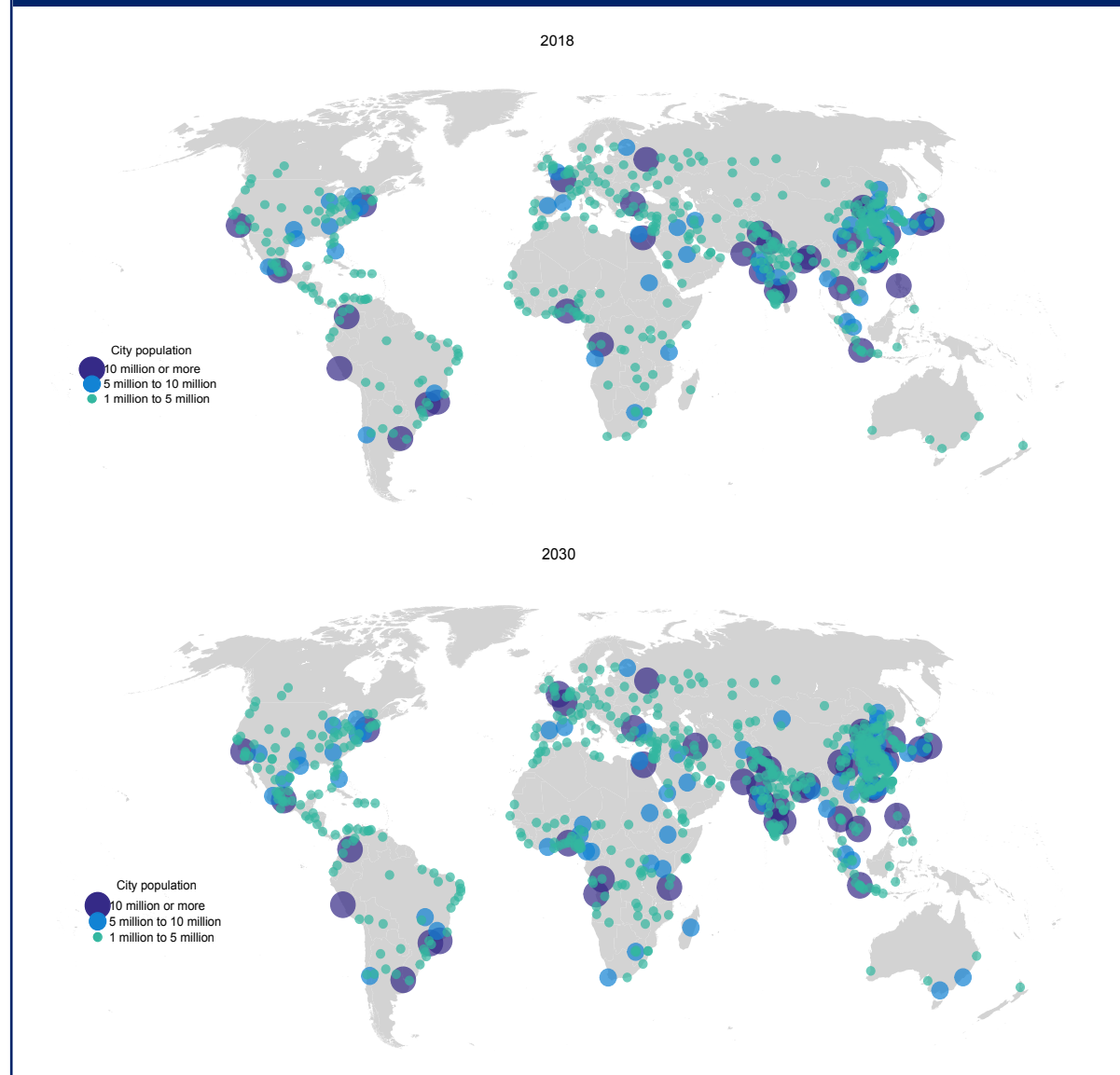
At the turn of the century in 2000, there were 371 cities with 1 million inhabitants or more worldwide. By 2018, the number of cities with at least 1 million inhabitants had grown to 548* and in 2030, a projected 706 cities will have at least 1 million residents.

Cities with more than 10 million inhabitants are often termed “megacities”. Globally, the number of megacities is projected to rise from 33 in 2018 to 43 in 2030.

In 2018, 48 cities had populations between 5 and 10 million. By 2030, 10 of these are projected to become megacities. Projections indicate that 28 additional cities will cross the 5 million mark between 2018 and 2030, of which 13 are located in Asia and 10 in Africa. In 2030, 66 cities are projected to have between 5 and 10 million inhabitants.

An overwhelming majority of the world's cities have fewer than 5 million inhabitants. In 2018, there were 467 cities with between 1 and 5 million inhabitants and an additional 598 cities with between 500,000 and 1 million inhabitants. By 2030, the number of cities with 1 to 5 million inhabitants is projected to grow to 597. A further 710 cities are expected to have between 500,000 and 1 million inhabitants in 2030.

Cities with 1 million inhabitants or more, 2018 and 2030



*See annex table for a complete listing of cities with 1 million inhabitants or more in 2018.

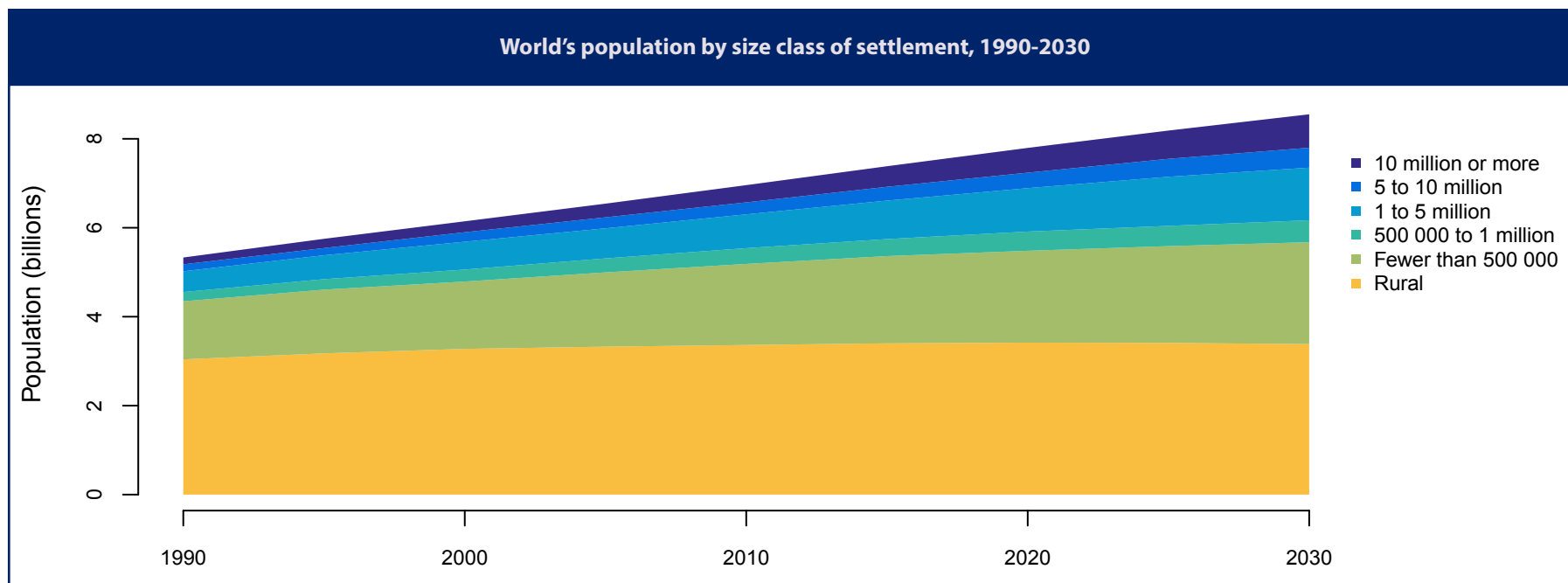
One in five people worldwide lives in a city with more than 1 million inhabitants

In 2018, 1.7 billion people—23 per cent of the world’s population—lived in a city with at least 1 million inhabitants. In 2030, a projected 28 per cent of people worldwide will be concentrated in cities with at least 1 million inhabitants.

Between 2018 and 2030, the urban population is projected to increase in all size classes, while the rural population is projected to decline slightly. Rural areas were home to 45 per cent of the world’s population in 2018, a proportion that is expected to fall to 40 per cent by 2030.

A minority of people reside in megacities—529 million, representing 6.9 per cent of the world’s population in 2018. Yet, as these cities increase in both size and number, they will become home to a growing share of the population. In 2030, a projected 752 million people will live in cities with at least 10 million inhabitants, representing 8.8 per cent of the global population.

Size class	2018			2030		
	Number of settlements	Population (millions)	Percentage of world population	Number of settlements	Population (millions)	Percentage of world population
Urban	..	4 220	55.3	..	5 167	60.4
10 million or more	33	529	6.9	43	752	8.8
5 to 10 million	48	325	4.3	66	448	5.2
1 to 5 million	467	926	12.1	597	1 183	13.8
500 000 to 1 million	598	415	5.4	710	494	5.8
Fewer than 500 000	..	2 025	26.5	..	2 291	26.8
Rural	..	3 413	44.7	..	3 384	39.6

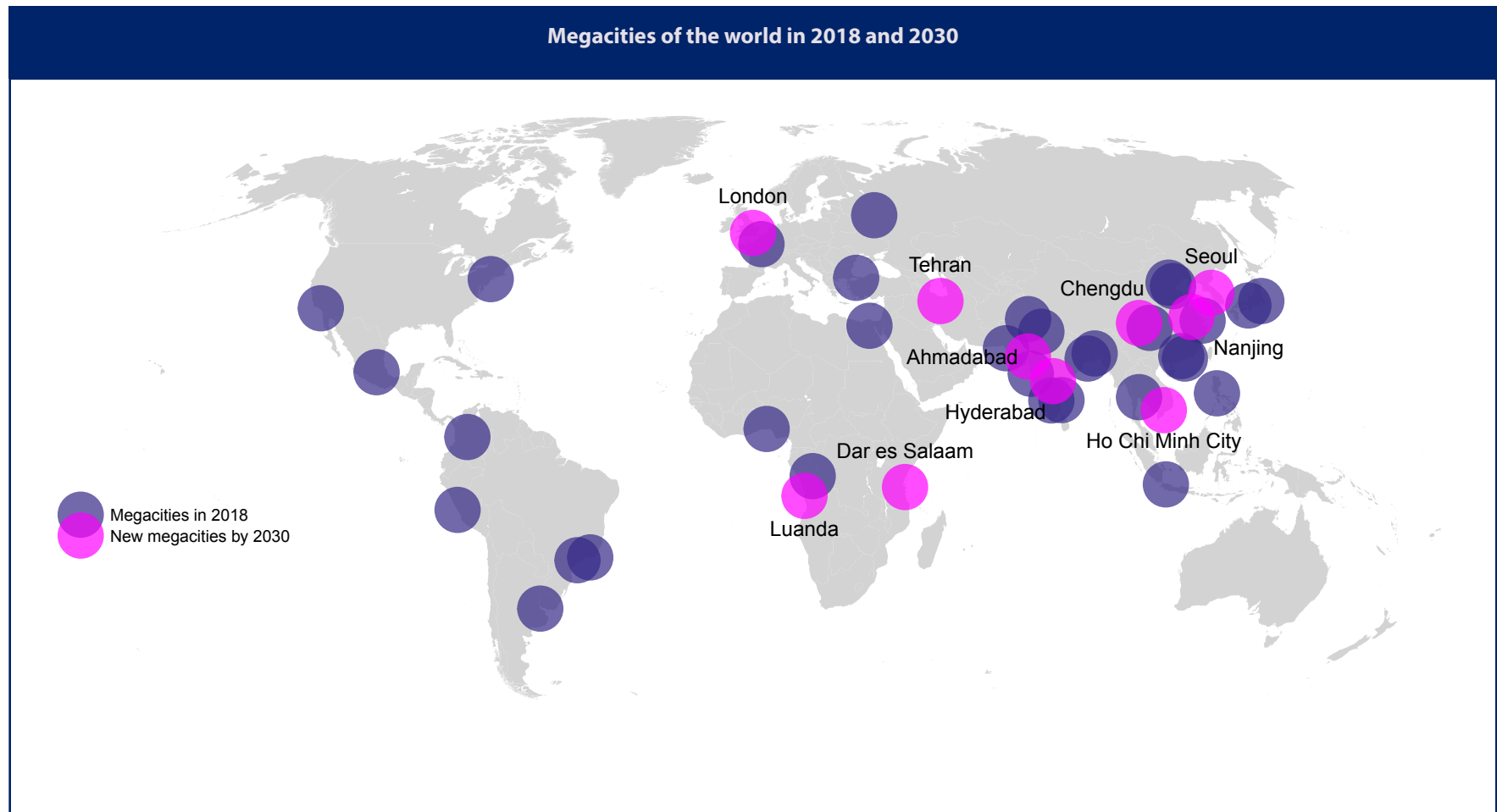


Delhi will overtake Tokyo as the world's largest city by 2030

Between 2018 and 2030, the population of Delhi, India is projected to increase by more than 10 million inhabitants, whereas that of Tokyo, Japan is projected to decline by almost 900,000. The two cities are thus expected to change places on the list of the world's cities ranked by size. Projections indicate that the world's tenth largest city in 2018—Osaka, Japan—will no longer be among the ten largest in 2030. Kinshasa, Democratic Republic of the Congo will grow to rank as the tenth most populous city in the world in 2030 .

The world's ten largest cities in 2018 and 2030				
City size rank	City	Population in 2018 (thousands)	City	Population in 2030 (thousands)
1	Tokyo, Japan	37 468	Delhi, India	38 939
2	Delhi, India	28 514	Tokyo, Japan	36 574
3	Shanghai, China	25 582	Shanghai, China	32 869
4	São Paulo, Brazil	21 650	Dhaka, Bangladesh	28 076
5	Ciudad de México (Mexico City), Mexico	21 581	Al-Qahirah (Cairo), Egypt	25 517
6	Al-Qahirah (Cairo), Egypt	20 076	Mumbai (Bombay), India	24 572
7	Mumbai (Bombay), India	19 980	Beijing, China	24 282
8	Beijing, China	19 618	Ciudad de México (Mexico City), Mexico	24 111
9	Dhaka, Bangladesh	19 578	São Paulo, Brazil	23 824
10	Kinki M.M.A. (Osaka), Japan	19 281	Kinshasa, Democratic Republic of the Congo	21 914

Most megacities are located in the global South

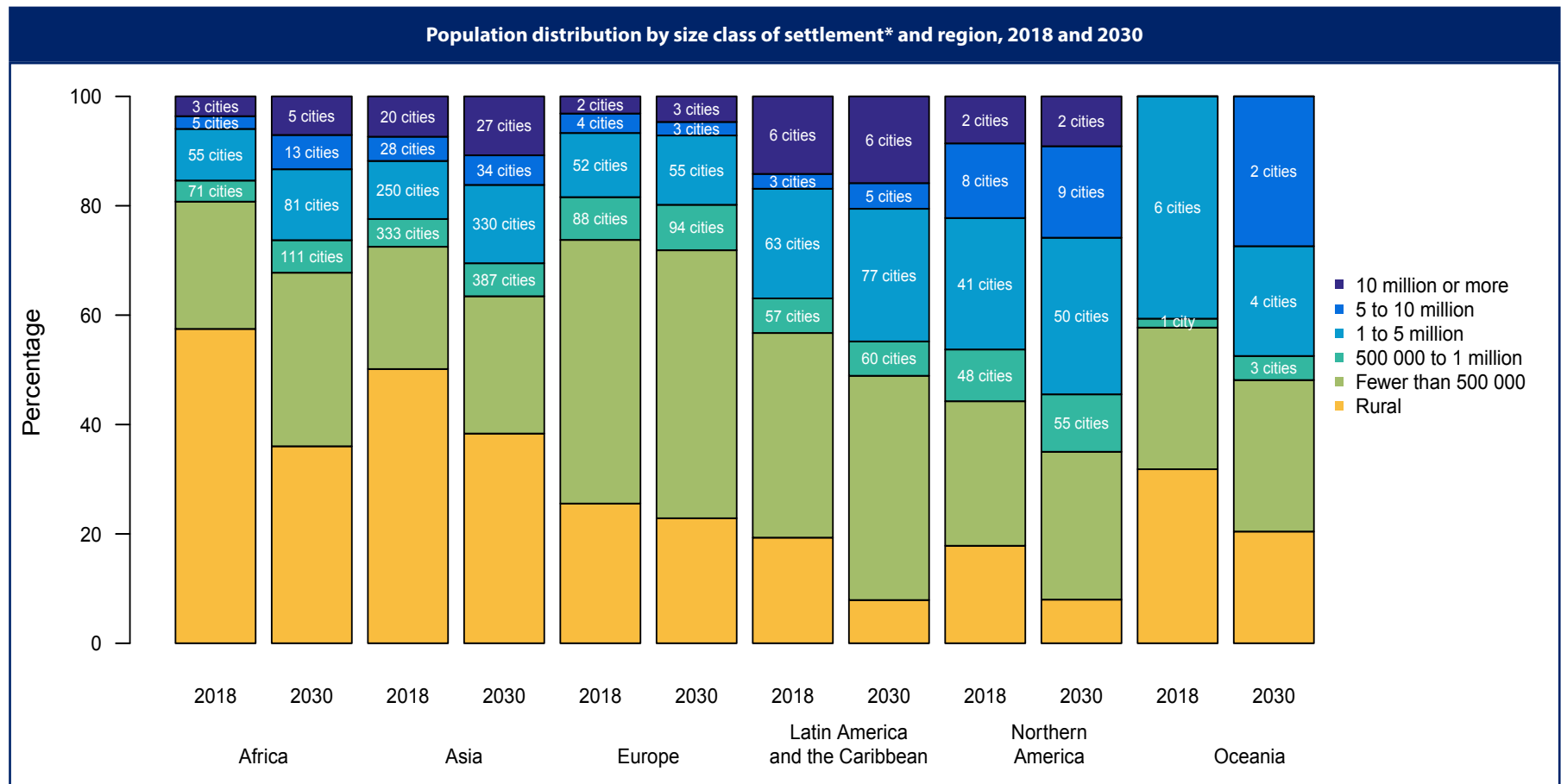


Of the world's 33 megacities—that is, cities with 10 million inhabitants or more—in 2018, 27 are located in the less developed regions or the “global South”. China alone was home to 6 megacities in 2018, while India had 5.

Nine of the 10 cities projected to become megacities between 2018 and 2030 are located in developing countries.

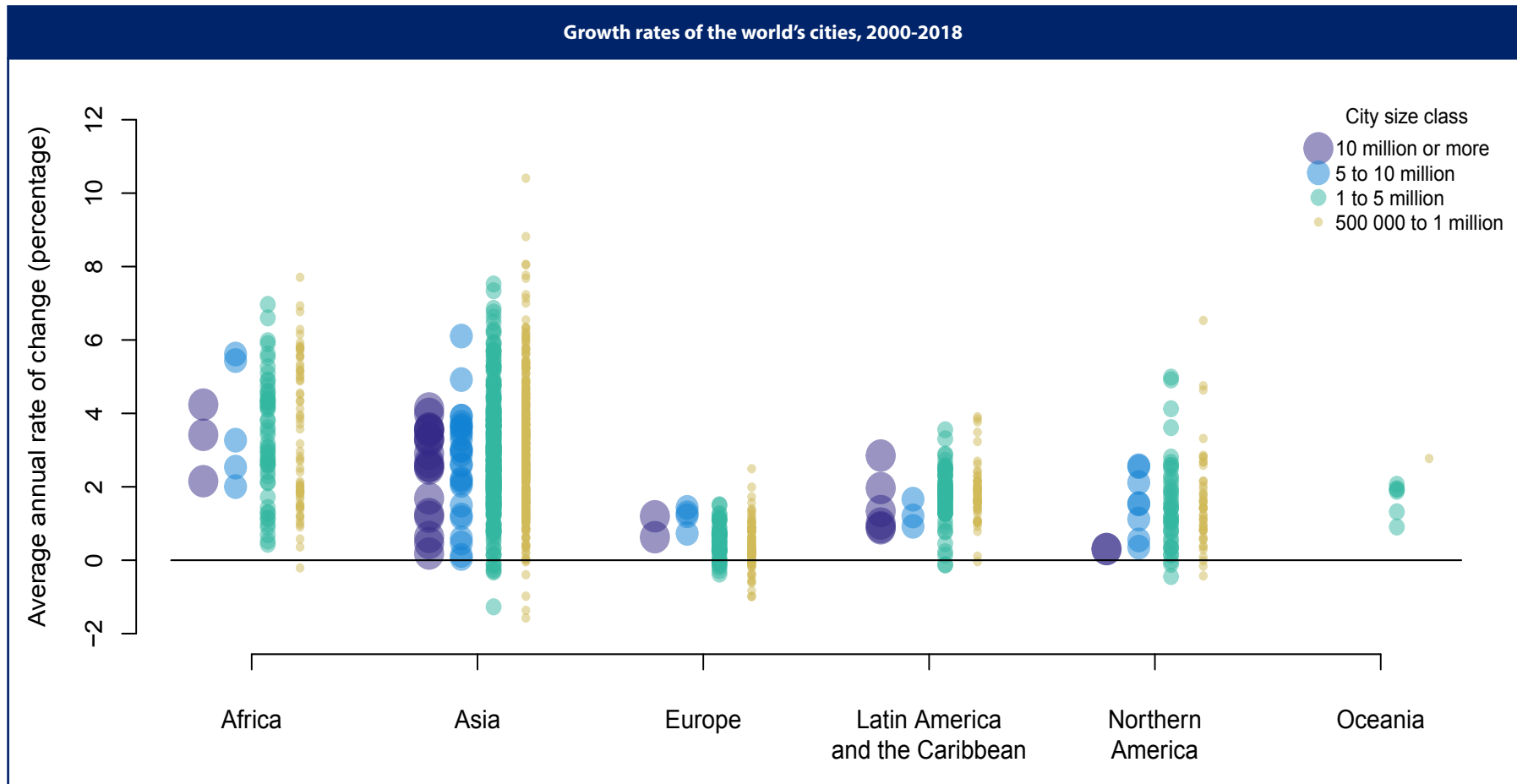
The share of the population residing in cities is increasing in all regions

In Northern America, more than half of the population resided in cities with 500,000 inhabitants or more in 2018 and one in five people lived in a city of 5 million inhabitants or more. Latin America and the Caribbean is the region with the largest proportion of the population concentrated in megacities: of the total population of the region in 2018, 14.2 per cent resided in the six cities with 10 million inhabitants or more. In both Africa and Asia, over half of the population lived in rural areas in 2018, a share that is declining in both regions. Between 2018 and 2030, the number of cities with 500,000 inhabitants or more is expected to grow by 57 per cent in Africa and by 23 per cent in Asia.



*The population of cities with fewer than 500,000 inhabitants is estimated by taking the difference between the total urban population and the population in cities with 500,000 inhabitants or more. The number of cities with fewer than 500,000 inhabitants is not estimated.

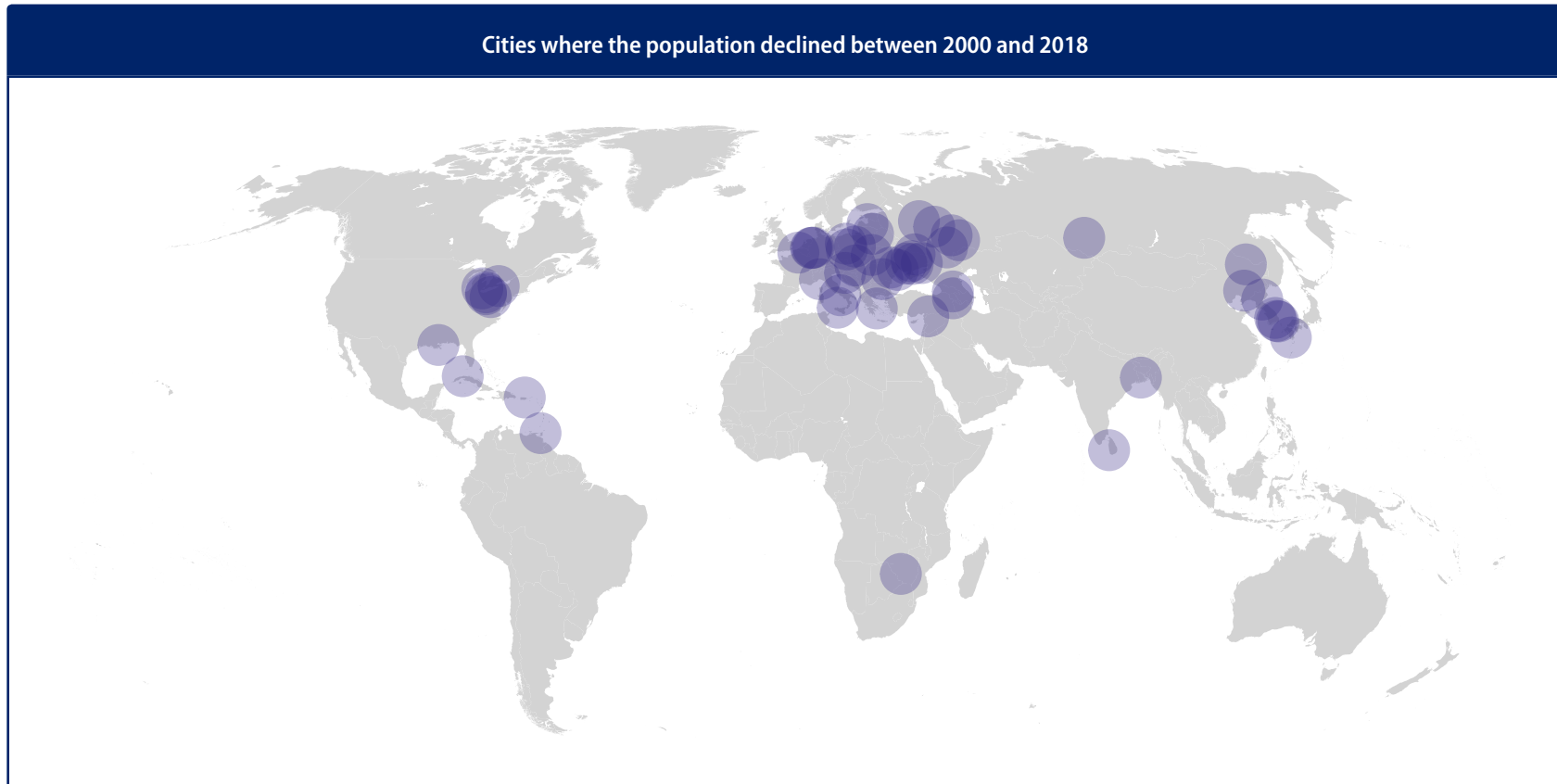
Most of the world's fastest growing cities are in Asia and Africa



Between 2000 and 2018, the populations of the world's cities with 500,000 inhabitants or more grew at an average annual rate of 2.4 per cent. However, 36 of these cities grew more than twice as fast, with average growth in excess of 6 per cent per year. Of these, 7 are located in Africa, 28 in Asia (17 in China alone) and 1 in Northern America. Among the 36 fastest growing cities, 25 have a long history of rapid population growth, with average annual growth rates above 6 per cent for the period 1980-2000.

Suzhou, China, is the only city among the 36 fastest growing cities that had a population already greater than 1 million in 2000.

Fifty-two cities have experienced population decline since 2000*

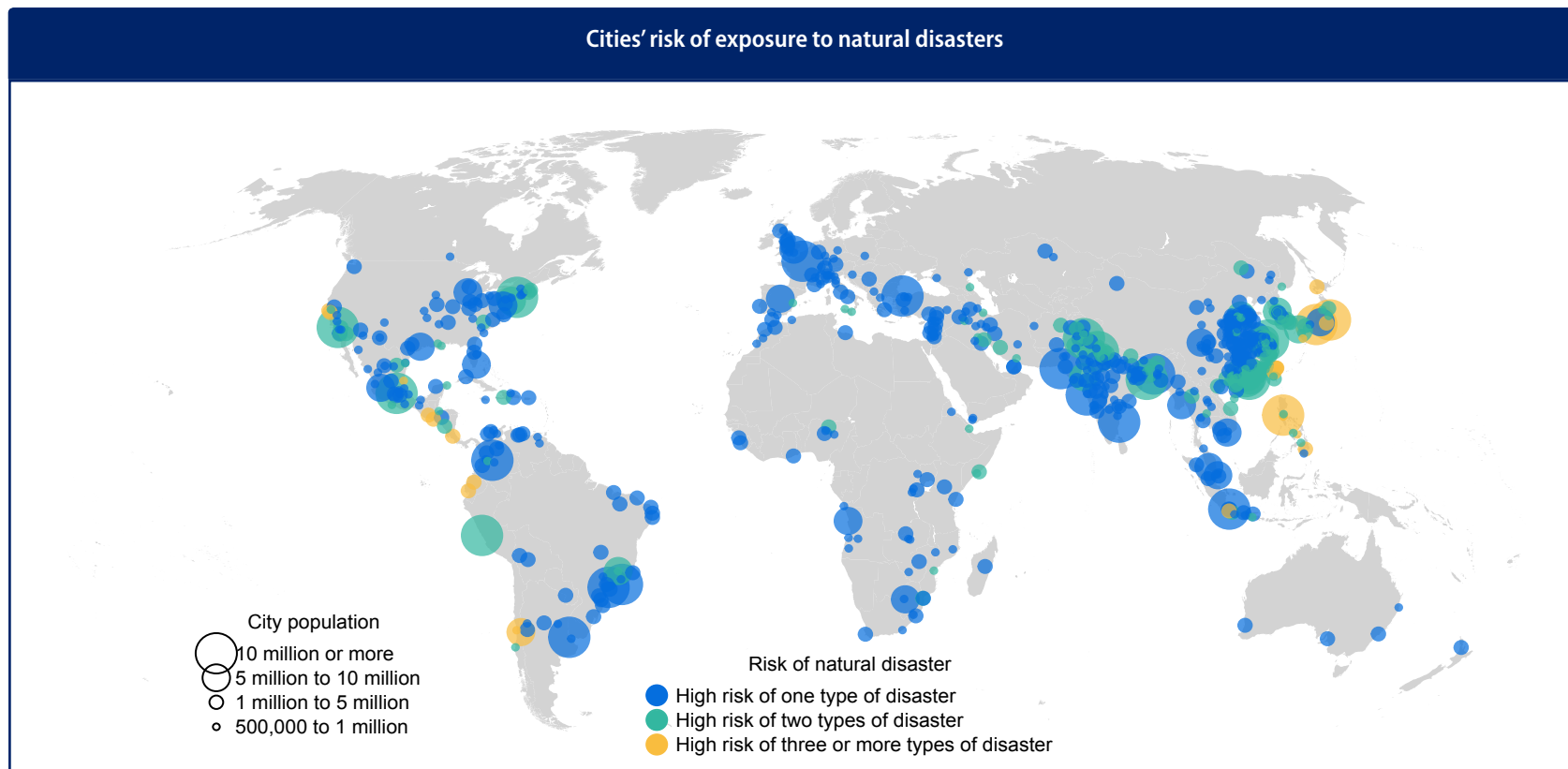


In some cities, population decline occurred in response to a natural disaster. This has been the case, for example, in New Orleans, United States, which lost population after Hurricane Katrina in 2005, and in Sendai, Japan, following the 2011 earthquake and tsunami. Economic contraction has also contributed to population decline in some places. For example, Buffalo and Detroit, both located in the United States, experienced population decline associated with the loss of industry and jobs.

In most cases, however, declining or stagnating populations have been associated with persistent low fertility rates, particularly in Europe. The 52 cities with declining populations were home to 59 million people in 2018, down from more than 62 million in 2000.

*Out of the 1,146 cities with 500,000 inhabitants or more in 2018.

Most cities are vulnerable to at least one type of natural disaster



Of the 1,146 cities with at least 500,000 inhabitants in 2018, 679 (59 per cent) were at high risk of exposure to at least one of six types of natural disaster, namely cyclones, floods, droughts, earthquakes, landslides and volcanic eruptions.* Taken together, cities of 500,000 inhabitants or more facing high risk of exposure to at least one type of natural disaster were home to 1.4 billion people in 2018.

One hundred and eighty-nine cities—most located along coastlines—were at high risk of exposure to two or more types of natural disaster; 26 cities—including megacities Manila, Osaka and Tokyo—faced high risk of exposure to three or more types of disaster.

*Based on analysis of city populations from the 2018 revision of World Urbanization Prospects together with spatial hotspot data reflecting the historical occurrence of six types of natural disaster from Columbia University and the World Bank. The natural disaster data include cyclones occurring between 1980 and 2000; floods between 1985 and 2003; droughts between 1980 and 2000; earthquakes between 1976 and 2002; and landslides and volcanic eruptions between 1979 and 2000. A city was classified as being at high risk of exposure to a particular type of natural disaster if its location intersected spatial grid cells ranking in the top three deciles of the global risk distribution of the frequency of that specific type of natural disaster. More information about the methodology can be found in Gu and others (2015): Risks of exposure and vulnerability to natural disasters at the city level: A global overview. Technical Paper No. 2015/2, Population Division, Department of Economic and Social Affairs, United Nations. Available from <http://esa.un.org/unpd/wup/Publications/Files/WUP2014-TechnicalPaper-NaturalDisaster.pdf>.

Annex table: The world's cities with 1 million inhabitants or more in 2018

Country or area	City	Statistical concept	City population (thousands)			Average annual rate of change (percentage)		City population as a proportion of the country or area's total or urban population in 2018 (percentage)	
			2000	2018	2030	2000-2018	2018-2030	Total population	Urban population
AFRICA									
Eastern Africa									
Ethiopia	Addis Ababa	City Proper	2 377	4 400	7 352	3.4	4.3	4.1	19.7
Kenya	Mombasa	City Proper	683	1 214	1 889	3.2	3.7	2.4	8.8
Kenya	Nairobi	City Proper	2 214	4 386	7 031	3.8	3.9	8.6	31.8
Madagascar	Antananarivo	Urban Agglomeration	1 361	3 058	5 189	4.5	4.4	11.6	31.3
Malawi	Lilongwe	City Proper	476	1 030	1 748	4.3	4.4	5.4	31.7
Mozambique	Maputo	City Proper	1 019	1 102	1 486	0.4	2.5	3.6	10.0
Mozambique	Matola	City Proper	498	1 635	2 418	6.6	3.3	5.4	14.9
Rwanda	Kigali	City Proper	498	1 058	1 568	4.2	3.3	8.5	49.2
Somalia	Muqdisho (Mogadishu)	Urban Agglomeration	1 201	2 082	3 497	3.1	4.3	13.7	30.5
Uganda	Kampala	Urban Agglomeration	1 233	2 986	5 506	4.9	5.1	6.7	28.4
United Republic of Tanzania	Dar es Salaam	Urban Agglomeration	2 272	6 048	10 789	5.4	4.8	10.2	30.3
United Republic of Tanzania	Mwanza	City Proper	342	1 003	1 827	6.0	5.0	1.7	5.0
Zambia	Lusaka	Urban Agglomeration	1 073	2 524	4 267	4.8	4.4	14.3	32.9
Zimbabwe	Harare	City Proper	1 379	1 515	1 845	0.5	1.6	9.0	27.8
Middle Africa									
Angola	Luanda	Urban Agglomeration	2 829	7 774	12 129	5.6	3.7	25.3	38.6
Cameroon	Douala	Urban Agglomeration	1 490	3 412	5 112	4.6	3.4	13.8	24.5
Cameroon	Yaoundé	Urban Agglomeration	1 351	3 656	5 734	5.5	3.8	14.8	26.3
Chad	N'Djaména	City Proper	690	1 323	2 122	3.6	3.9	8.6	37.4
Congo	Brazzaville	City Proper	1 022	2 230	3 292	4.3	3.2	41.3	61.7
Congo	Pointe-Noire	City Proper	539	1 138	1 664	4.2	3.2	21.1	31.5
Democratic Republic of the Congo	Kananga	City Proper	604	1 335	2 240	4.4	4.3	1.6	3.6
Democratic Republic of the Congo	Kinshasa	Urban Agglomeration	6 140	13 171	21 914	4.2	4.2	15.7	35.3
Democratic Republic of the Congo	Kisangani	City Proper	586	1 167	1 903	3.8	4.1	1.4	3.1

Country or area	City	Statistical concept	City population (thousands)			Average annual rate of change (percentage)		City population as a proportion of the country or area's total or urban population in 2018 (percentage)	
			2000	2018	2030	2000-2018	2018-2030	Total population	Urban population
Democratic Republic of the Congo	Lubumbashi	City Proper	1 089	2 281	3 771	4.1	4.2	2.7	6.1
Democratic Republic of the Congo	Mbuji-Mayi	City Proper	1 011	2 305	3 899	4.6	4.4	2.7	6.2
Northern Africa									
Algeria	El Djazaïr (Algiers)	Urban Agglomeration	2 141	2 694	3 263	1.3	1.6	6.4	8.8
Egypt	Al-Iskandariyah (Alexandria)	City Proper	3 546	5 086	6 417	2.0	1.9	5.1	12.0
Egypt	Al-Qahirah (Cairo)	Metropolitan area	13 626	20 076	25 517	2.2	2.0	20.2	47.3
Libya	Tarabulus (Tripoli)	City Proper	1 022	1 158	1 272	0.7	0.8	17.9	22.3
Morocco	Dar-el-Beida (Casablanca)	Urban Agglomeration	3 134	3 684	4 349	0.9	1.4	10.2	16.3
Morocco	Fès	Urban Agglomeration	868	1 184	1 455	1.7	1.7	3.3	5.2
Morocco	Rabat	Urban Agglomeration	1 507	1 847	2 192	1.1	1.4	5.1	8.2
Morocco	Tanger	Urban Agglomeration	591	1 116	1 517	3.5	2.6	3.1	4.9
Sudan	Al-Khartum (Khartoum)	Urban Agglomeration	3 505	5 534	8 023	2.5	3.1	13.3	38.5
Tunisia	Tunis	Urban Agglomeration	1 769	2 291	2 703	1.4	1.4	19.6	28.5
Southern Africa									
South Africa	Cape Town	Urban Agglomeration	2 785	4 430	5 468	2.6	1.8	7.7	11.6
South Africa	Durban (EtheKwini)	Urban Agglomeration	2 625	3 134	3 535	1.0	1.0	5.5	8.2
South Africa	Ekurhuleni	Urban Agglomeration	2 339	3 741	4 601	2.6	1.7	6.5	9.8
South Africa	Johannesburg	Urban Agglomeration	3 046	5 486	6 978	3.3	2.0	9.6	14.4
South Africa	Port Elizabeth (Nelson Mandela Bay)	Metropolitan area	974	1 231	1 429	1.3	1.2	2.1	3.2
South Africa	Pretoria	Urban Agglomeration	1 084	2 378	3 219	4.4	2.5	4.1	6.2
Western Africa									
Burkina Faso	Ouagadougou	City Proper	921	2 531	4 426	5.6	4.7	12.8	43.7
Côte d'Ivoire	Abidjan	City Proper	3 007	4 921	7 136	2.7	3.1	19.8	38.9
Ghana	Accra	Metropolitan area	1 668	2 439	3 187	2.1	2.2	8.3	14.8
Ghana	Kumasi	Metropolitan area	1 187	3 065	4 681	5.3	3.5	10.4	18.6
Guinea	Conakry	City Proper	1 192	1 843	2 687	2.4	3.1	14.1	39.1
Liberia	Monrovia	Urban Agglomeration	836	1 418	2 120	2.9	3.4	29.2	57.1
Mali	Bamako	City Proper	1 142	2 447	3 932	4.2	4.0	12.8	30.2
Mauritania	Nouakchott	City Proper	553	1 205	1 925	4.3	3.9	26.6	49.5
Niger	Niamey	City Proper	696	1 214	1 988	3.1	4.1	5.4	33.1

Country or area	City	Statistical concept	City population (thousands)			Average annual rate of change (percentage)		City population as a proportion of the country or area's total or urban population in 2018 (percentage)	
			2000	2018	2030	2000-2018	2018-2030	Total population	Urban population
Nigeria	Aba	Urban Agglomeration	630	1 023	1 527	2.7	3.3	0.5	1.0
Nigeria	Abuja	Urban Agglomeration	833	2 919	5 119	7.0	4.7	1.5	3.0
Nigeria	Benin City	Urban Agglomeration	975	1 628	2 451	2.9	3.4	0.8	1.7
Nigeria	Ibadan	Urban Agglomeration	2 236	3 383	4 956	2.3	3.2	1.7	3.4
Nigeria	Kaduna	City Proper	881	1 083	1 499	1.1	2.7	0.6	1.1
Nigeria	Kano	Urban Agglomeration	2 602	3 820	5 551	2.1	3.1	2.0	3.9
Nigeria	Lagos	Urban Agglomeration	7 281	13 463	20 600	3.4	3.5	6.9	13.7
Nigeria	Onitsha	Urban Agglomeration	533	1 285	2 138	4.9	4.2	0.7	1.3
Nigeria	Port Harcourt	Urban Agglomeration	1 091	2 731	4 595	5.1	4.3	1.4	2.8
Nigeria	Uyo	Urban Agglomeration	350	1 012	1 771	5.9	4.7	0.5	1.0
Senegal	Dakar	Urban Agglomeration	1 862	2 978	4 339	2.6	3.1	18.3	38.7
Sierra Leone	Freetown	City Proper	690	1 136	1 605	2.8	2.9	14.7	35.0
Togo	Lomé	Urban Agglomeration	1 023	1 746	2 496	3.0	3.0	21.8	52.4
ASIA									
Eastern Asia									
China	Anshan	Urban Agglomeration	1 384	1 600	1 857	0.8	1.2	0.1	0.2
China	Anyang	Urban Agglomeration	548	1 328	1 893	4.9	3.0	0.1	0.2
China	Baoding	Urban Agglomeration	1 070	1 889	2 355	3.2	1.8	0.1	0.2
China	Baoji	Urban Agglomeration	638	1 098	1 422	3.0	2.2	0.1	0.1
China	Baotou	Urban Agglomeration	1 406	2 096	2 608	2.2	1.8	0.1	0.3
China	Beijing	Urban Agglomeration	10 285	19 618	24 282	3.6	1.8	1.4	2.3
China	Benxi	Urban Agglomeration	857	1 122	1 348	1.5	1.5	0.1	0.1
China	Binzhou	Urban Agglomeration	415	1 000	1 371	4.9	2.6	0.1	0.1
China	Changchun	Urban Agglomeration	2 892	4 241	5 257	2.1	1.8	0.3	0.5
China	Changsha	Urban Agglomeration	2 182	4 345	5 525	3.8	2.0	0.3	0.5
China	Changzhou, Jiangsu	Urban Agglomeration	1 698	3 372	4 526	3.8	2.5	0.2	0.4
China	Chaozhou	Urban Agglomeration	691	1 389	1 654	3.9	1.5	0.1	0.2
China	Chengdu	Urban Agglomeration	4 607	8 813	10 728	3.6	1.6	0.6	1.1
China	Chifeng	Urban Agglomeration	677	1 105	1 406	2.7	2.0	0.1	0.1
China	Chongqing	Urban Agglomeration	7 863	14 838	19 649	3.5	2.3	1.0	1.8

Country or area	City	Statistical concept	City population (thousands)			Average annual rate of change (percentage)		City population as a proportion of the country or area's total or urban population in 2018 (percentage)	
			2000	2018	2030	2000-2018	2018-2030	Total population	Urban population
China	Cixi	Urban Agglomeration	676	1 480	2 048	4.4	2.7	0.1	0.2
China	Dalian	Urban Agglomeration	3 092	5 300	6 848	3.0	2.1	0.4	0.6
China	Daqing	Urban Agglomeration	1 082	1 763	2 247	2.7	2.0	0.1	0.2
China	Datong	Urban Agglomeration	1 049	1 659	2 102	2.5	2.0	0.1	0.2
China	Dongguan	Urban Agglomeration	3 633	7 360	8 279	3.9	1.0	0.5	0.9
China	Dongying	Urban Agglomeration	706	1 205	1 553	3.0	2.1	0.1	0.1
China	Foshan	Urban Agglomeration	3 831	7 196	8 350	3.5	1.2	0.5	0.9
China	Fushun, Liaoning	Urban Agglomeration	1 358	1 288	1 416	-0.3	0.8	0.1	0.2
China	Fuzhou, Fujian	Urban Agglomeration	2 279	3 532	4 377	2.4	1.8	0.2	0.4
China	Ganzhou	Urban Agglomeration	374	1 158	1 692	6.3	3.2	0.1	0.1
China	Guangzhou, Guangdong	Urban Agglomeration	7 812	12 638	16 024	2.7	2.0	0.9	1.5
China	Guilin	Urban Agglomeration	805	1 096	1 329	1.7	1.6	0.1	0.1
China	Guiyang	Urban Agglomeration	1 860	3 136	4 029	2.9	2.1	0.2	0.4
China	Haerbin	Urban Agglomeration	4 100	6 115	7 597	2.2	1.8	0.4	0.7
China	Haikou	Urban Agglomeration	907	1 805	2 253	3.8	1.8	0.1	0.2
China	Handan	Urban Agglomeration	925	2 528	3 423	5.6	2.5	0.2	0.3
China	Hangzhou	Urban Agglomeration	3 570	7 236	9 260	3.9	2.1	0.5	0.9
China	Hefei	Urban Agglomeration	1 532	3 980	5 218	5.3	2.3	0.3	0.5
China	Hengyang	Urban Agglomeration	793	1 433	1 879	3.3	2.3	0.1	0.2
China	Hohhot	Urban Agglomeration	1 005	2 009	2 709	3.8	2.5	0.1	0.2
China	Huai'an	Urban Agglomeration	956	2 420	3 430	5.2	2.9	0.2	0.3
China	Huaibei	Urban Agglomeration	617	1 076	1 394	3.1	2.2	0.1	0.1
China	Huainan	Urban Agglomeration	1 049	1 393	1 677	1.6	1.5	0.1	0.2
China	Huizhou	Urban Agglomeration	1 003	2 360	3 126	4.8	2.3	0.2	0.3
China	Ji'nan, Shandong	Urban Agglomeration	2 923	5 052	6 546	3.0	2.2	0.4	0.6
China	Jiangmen	Urban Agglomeration	834	1 640	1 956	3.8	1.5	0.1	0.2
China	Jiaxing	Urban Agglomeration	440	1 140	1 648	5.3	3.1	0.1	0.1
China	Jieyang	Urban Agglomeration	446	1 049	1 473	4.7	2.8	0.1	0.1

Country or area	City	Statistical concept	City population (thousands)			Average annual rate of change (percentage)		City population as a proportion of the country or area's total or urban population in 2018 (percentage)	
			2000	2018	2030	2000-2018	2018-2030	Total population	Urban population
China	Jilin	Urban Agglomeration	1 311	1 569	1 838	1.0	1.3	0.1	0.2
China	Jingzhou, Hubei	Urban Agglomeration	761	1 008	1 206	1.6	1.5	0.1	0.1
China	Jinhua	Urban Agglomeration	353	1 024	1 447	5.9	2.9	0.1	0.1
China	Jining, Shandong	Urban Agglomeration	1 112	1 450	1 738	1.5	1.5	0.1	0.2
China	Jinzhou	Urban Agglomeration	770	1 101	1 354	2.0	1.7	0.1	0.1
China	Kaifeng	Urban Agglomeration	614	1 186	1 588	3.7	2.4	0.1	0.1
China	Kunming	Urban Agglomeration	2 654	4 230	5 335	2.6	1.9	0.3	0.5
China	Lanzhou	Urban Agglomeration	1 890	2 936	3 692	2.4	1.9	0.2	0.4
China	Lianyungang	Urban Agglomeration	769	1 703	2 249	4.4	2.3	0.1	0.2
China	Linyi, Shandong	Urban Agglomeration	1 129	1 843	2 327	2.7	1.9	0.1	0.2
China	Liuan	Urban Agglomeration	349	1 063	1 611	6.2	3.5	0.1	0.1
China	Liuyang	Urban Agglomeration	272	1 020	1 624	7.3	3.9	0.1	0.1
China	Liuzhou	Urban Agglomeration	1 168	2 042	2 641	3.1	2.1	0.1	0.2
China	Luoyang	Urban Agglomeration	1 213	2 236	2 946	3.4	2.3	0.2	0.3
China	Maoming	Urban Agglomeration	654	1 136	1 469	3.1	2.1	0.1	0.1
China	Mianyang, Sichuan	Urban Agglomeration	850	1 228	1 504	2.0	1.7	0.1	0.1
China	Nanchang	Urban Agglomeration	1 903	3 373	4 435	3.2	2.3	0.2	0.4
China	Nanchong	Urban Agglomeration	605	1 173	1 563	3.7	2.4	0.1	0.1
China	Nanjing, Jiangsu	Urban Agglomeration	4 279	8 245	11 011	3.6	2.4	0.6	1.0
China	Nanning	Urban Agglomeration	1 737	3 628	4 734	4.1	2.2	0.3	0.4
China	Nantong	Urban Agglomeration	1 006	2 123	2 828	4.1	2.4	0.2	0.3
China	Nanyang, Henan	Urban Agglomeration	697	1 088	1 372	2.5	1.9	0.1	0.1
China	Ningbo	Urban Agglomeration	1 849	3 815	5 169	4.0	2.5	0.3	0.5
China	Panjin	Urban Agglomeration	683	1 009	1 250	2.2	1.8	0.1	0.1
China	Pingdingshan, Henan	City Proper	632	1 093	1 417	3.0	2.2	0.1	0.1
China	Puning	Urban Agglomeration	646	1 095	1 412	2.9	2.1	0.1	0.1
China	Putian	Urban Agglomeration	613	1 712	2 529	5.7	3.3	0.1	0.2
China	Qingdao	Urban Agglomeration	3 363	5 381	6 684	2.6	1.8	0.4	0.6
China	Qinhuangdao	Urban Agglomeration	744	1 432	1 907	3.6	2.4	0.1	0.2
China	Qiqihaer	Urban Agglomeration	1 188	1 515	1 809	1.4	1.5	0.1	0.2

Country or area	City	Statistical concept	City population (thousands)			Average annual rate of change (percentage)		City population as a proportion of the country or area's total or urban population in 2018 (percentage)	
			2000	2018	2030	2000-2018	2018-2030	Total population	Urban population
China	Quanzhou	Urban Agglomeration	764	1 568	2 132	4.0	2.6	0.1	0.2
China	Rizhao	Urban Agglomeration	613	1 186	1 578	3.7	2.4	0.1	0.1
China	Ruian	Urban Agglomeration	555	1 089	1 456	3.7	2.4	0.1	0.1
China	Shanghai	City Proper	14 247	25 582	32 869	3.3	2.1	1.8	3.1
China	Shantou	Urban Agglomeration	2 930	4 174	5 083	2.0	1.6	0.3	0.5
China	Shaoxing	Urban Agglomeration	1 124	2 350	3 200	4.1	2.6	0.2	0.3
China	Shenyang	Urban Agglomeration	4 737	6 921	8 569	2.1	1.8	0.5	0.8
China	Shenzhen	Urban Agglomeration	6 550	11 908	14 537	3.3	1.7	0.8	1.4
China	Shijiazhuang	Urban Agglomeration	2 591	3 950	4 872	2.3	1.7	0.3	0.5
China	Shiyao	Urban Agglomeration	631	1 162	1 533	3.4	2.3	0.1	0.1
China	Suqian	Urban Agglomeration	397	1 276	1 950	6.5	3.5	0.1	0.2
China	Suzhou, Anhui	Urban Agglomeration	453	1 068	1 507	4.8	2.9	0.1	0.1
China	Suzhou, Jiangsu	Urban Agglomeration	2 112	6 339	9 389	6.1	3.3	0.4	0.8
China	Taian, Shandong	Urban Agglomeration	910	1 290	1 575	1.9	1.7	0.1	0.2
China	Taiyuan, Shanxi	Urban Agglomeration	2 502	3 725	4 628	2.2	1.8	0.3	0.4
China	Taizhou, Jiangsu	Urban Agglomeration	784	1 282	1 622	2.7	2.0	0.1	0.2
China	Taizhou, Zhejiang	City Proper	992	1 818	2 374	3.4	2.2	0.1	0.2
China	Tangshan, Hebei	Urban Agglomeration	1 418	3 145	4 371	4.4	2.7	0.2	0.4
China	Tengzhou	Urban Agglomeration	489	1 094	1 514	4.5	2.7	0.1	0.1
China	Tianjin	Urban Agglomeration	6 989	13 215	15 745	3.5	1.5	0.9	1.6
China	Ürümqi (Wulumqi)	Urban Agglomeration	1 807	4 011	5 574	4.4	2.7	0.3	0.5
China	Weifang	Urban Agglomeration	1 235	2 466	3 318	3.8	2.5	0.2	0.3
China	Weihai	Urban Agglomeration	620	1 216	1 622	3.7	2.4	0.1	0.1
China	Wenzhou	Urban Agglomeration	1 590	3 419	4 416	4.3	2.1	0.2	0.4
China	Wuhan	Urban Agglomeration	6 638	8 176	9 611	1.2	1.3	0.6	1.0
China	Wuhu, Anhui	Urban Agglomeration	634	1 685	2 463	5.4	3.2	0.1	0.2
China	Wuxi, Jiangsu	Urban Agglomeration	1 835	3 144	3 818	3.0	1.6	0.2	0.4
China	Xi'an, Shaanxi	Urban Agglomeration	3 788	7 444	9 984	3.8	2.4	0.5	0.9
China	Xiamen	Urban Agglomeration	1 416	3 585	4 376	5.2	1.7	0.3	0.4
China	Xiangtan, Hunan	Urban Agglomeration	698	1 089	1 371	2.5	1.9	0.1	0.1

Country or area	City	Statistical concept	City population (thousands)			Average annual rate of change (percentage)		City population as a proportion of the country or area's total or urban population in 2018 (percentage)	
			2000	2018	2030	2000-2018	2018-2030	Total population	Urban population
China	Xiangyang	Urban Agglomeration	1 202	1 607	1 931	1.6	1.5	0.1	0.2
China	Xining	Urban Agglomeration	844	1 452	1 878	3.0	2.1	0.1	0.2
China	Xinxiang	Urban Agglomeration	762	1 044	1 266	1.7	1.6	0.1	0.1
China	Xuzhou	Urban Agglomeration	1 367	2 054	2 554	2.3	1.8	0.1	0.2
China	Yancheng, Jiangsu	Urban Agglomeration	923	1 779	2 231	3.6	1.9	0.1	0.2
China	Yangzhou	Urban Agglomeration	1 217	1 901	2 385	2.5	1.9	0.1	0.2
China	Yantai	Urban Agglomeration	1 217	2 359	3 135	3.7	2.4	0.2	0.3
China	Yichang	Urban Agglomeration	692	1 432	1 952	4.0	2.6	0.1	0.2
China	Yinchuan	Urban Agglomeration	571	1 483	1 939	5.3	2.2	0.1	0.2
China	Yingkou	Urban Agglomeration	624	1 138	1 497	3.3	2.3	0.1	0.1
China	Yiwu	Urban Agglomeration	560	1 227	1 698	4.4	2.7	0.1	0.1
China	Zaozhuang	Urban Agglomeration	853	1 063	1 250	1.2	1.3	0.1	0.1
China	Zhangjiakou	Urban Agglomeration	878	1 367	1 720	2.5	1.9	0.1	0.2
China	Zhanjiang	Urban Agglomeration	818	1 231	1 533	2.3	1.8	0.1	0.1
China	Zhengzhou	Urban Agglomeration	2 438	4 940	6 669	3.9	2.5	0.3	0.6
China	Zhenjiang, Jiangsu	Urban Agglomeration	743	1 124	1 397	2.3	1.8	0.1	0.1
China	Zhongshan	Urban Agglomeration	1 375	2 872	3 302	4.1	1.2	0.2	0.3
China	Zhuhai	Urban Agglomeration	1 004	1 671	2 120	2.8	2.0	0.1	0.2
China	Zhuzhou	Urban Agglomeration	819	1 145	1 394	1.9	1.6	0.1	0.1
China	Zibo	Urban Agglomeration	1 873	2 555	3 084	1.7	1.6	0.2	0.3
China	Zunyi	Urban Agglomeration	745	1 216	1 545	2.7	2.0	0.1	0.1
China, Hong Kong SAR	Hong Kong	Urban Agglomeration	6 664	7 429	7 987	0.6	0.6	100.0	100.0
China, Taiwan Province of China	Gaoxiong	City Proper	1 488	1 532	1 602	0.2	0.4	6.5	8.3
China, Taiwan Province of China	Taipei	Urban Agglomeration	2 642	2 706	2 844	0.1	0.4	11.4	14.6
China, Taiwan Province of China	Taizhong	Urban Agglomeration	978	1 283	1 434	1.5	0.9	5.4	6.9
China, Taiwan Province of China	Taoyuan	City Proper	1 700	2 190	2 423	1.4	0.8	9.2	11.8
China, Taiwan Province of China	Xinbei	City Proper	3 689	4 325	4 683	0.9	0.7	18.3	23.4
Dem. People's Republic of Korea	P'yongyang	City Proper	2 777	3 038	3 345	0.5	0.8	11.9	19.2
Japan	Chukyo M.M.A. (Nagoya)	Metropolitan area	8 740	9 507	9 407	0.5	-0.1	7.5	8.2
Japan	Hiroshima	Metropolitan area	2 044	2 095	2 031	0.1	-0.3	1.6	1.8

Country or area	City	Statistical concept	City population (thousands)			Average annual rate of change (percentage)		City population as a proportion of the country or area's total or urban population in 2018 (percentage)	
			2000	2018	2030	2000-2018	2018-2030	Total population	Urban population
Japan	Kinki M.M.A. (Osaka)	Metropolitan area	18 660	19 281	18 658	0.2	-0.3	15.2	16.5
Japan	Kitakyushu-Fukuoka M.M.A.	Metropolitan area	5 421	5 551	5 395	0.1	-0.2	4.4	4.8
Japan	Sapporo	Metropolitan area	2 508	2 665	2 612	0.3	-0.2	2.1	2.3
Japan	Sendai	Metropolitan area	2 184	2 306	2 301	0.3	-0.0	1.8	2.0
Japan	Shizuoka-Hamamatsu M.M.A.	Metropolitan area	1 217	2 899	2 883	4.8	-0.0	2.3	2.5
Japan	Tokyo	Metropolitan area	34 450	37 468	36 574	0.5	-0.2	29.5	32.2
Mongolia	Ulaanbaatar	City Proper	765	1 520	1 841	3.8	1.6	48.7	71.2
Republic of Korea	Busan	Urban Agglomeration	3 673	3 467	3 532	-0.3	0.2	6.8	8.3
Republic of Korea	Changwon	Urban Agglomeration	1 077	1 060	1 070	-0.1	0.1	2.1	2.5
Republic of Korea	Daegu	City Proper	2 323	2 221	2 205	-0.2	-0.1	4.3	5.3
Republic of Korea	Daejeon	City Proper	1 354	1 558	1 610	0.8	0.3	3.0	3.7
Republic of Korea	Goyang	City Proper	734	1 039	1 145	1.9	0.8	2.0	2.5
Republic of Korea	Gwangju	City Proper	1 343	1 518	1 559	0.7	0.2	3.0	3.6
Republic of Korea	Incheon	City Proper	2 371	2 763	2 923	0.9	0.5	5.4	6.6
Republic of Korea	Seoul	Urban Agglomeration	9 879	9 963	10 163	0.0	0.2	19.5	23.9
Republic of Korea	Suweon	Urban Agglomeration	932	1 265	1 420	1.7	1.0	2.5	3.0
Republic of Korea	Yongin	Urban Agglomeration	374	1 039	1 186	5.7	1.1	2.0	2.5
South-Central Asia									
Central Asia									
Kazakhstan	Almaty	City Proper	1 160	1 829	2 170	2.5	1.4	9.9	17.3
Kazakhstan	Astana	City Proper	371	1 068	1 456	5.9	2.6	5.8	10.1
Uzbekistan	Tashkent	City Proper	2 135	2 464	2 835	0.8	1.2	7.6	15.1
Southern Asia									
Afghanistan	Kabul	City Proper	2 401	4 012	5 737	2.9	3.0	11.0	43.3
Bangladesh	Chittagong	Metropolitan area	3 308	4 816	6 393	2.1	2.4	2.9	7.9
Bangladesh	Dhaka	Metropolitan area	10 285	19 578	28 076	3.6	3.0	11.8	32.1
India	Agra	Urban Agglomeration	1 342	2 110	2 774	2.5	2.3	0.2	0.5
India	Ahmadabad	Urban Agglomeration	4 815	7 681	10 148	2.6	2.3	0.6	1.7
India	Aligarh	Urban Agglomeration	655	1 143	1 548	3.1	2.5	0.1	0.2
India	Allahabad	Urban Agglomeration	1 028	1 355	1 698	1.5	1.9	0.1	0.3

Country or area	City	Statistical concept	City population (thousands)			Average annual rate of change (percentage)		City population as a proportion of the country or area's total or urban population in 2018 (percentage)	
			2000	2018	2030	2000-2018	2018-2030	Total population	Urban population
India	Amritsar	Urban Agglomeration	981	1 335	1 685	1.7	1.9	0.1	0.3
India	Asansol	Urban Agglomeration	1 058	1 391	1 744	1.5	1.9	0.1	0.3
India	Aurangabad	Urban Agglomeration	869	1 476	1 982	2.9	2.5	0.1	0.3
India	Bangalore	Urban Agglomeration	5 581	11 440	16 227	4.0	2.9	0.8	2.5
India	Bareilly	Urban Agglomeration	748	1 195	1 583	2.6	2.3	0.1	0.3
India	Bhopal	Urban Agglomeration	1 428	2 278	3 008	2.6	2.3	0.2	0.5
India	Bhubaneswar	Urban Agglomeration	638	1 100	1 482	3.0	2.5	0.1	0.2
India	Chandigarh	Urban Agglomeration	790	1 110	1 413	1.9	2.0	0.1	0.2
India	Chennai (Madras)	Urban Agglomeration	6 593	10 456	13 814	2.6	2.3	0.8	2.3
India	Coimbatore	Urban Agglomeration	1 562	2 641	3 542	2.9	2.4	0.2	0.6
India	Delhi	Metropolitan area	15 692	28 514	38 939	3.3	2.6	2.1	6.2
India	Dhanbad	Urban Agglomeration	1 048	1 302	1 604	1.2	1.7	0.1	0.3
India	Durg-Bhilainagar	Urban Agglomeration	911	1 177	1 465	1.4	1.8	0.1	0.3
India	Guwahati (Gauhati)	Urban Agglomeration	801	1 083	1 365	1.7	1.9	0.1	0.2
India	Gwalior	Urban Agglomeration	855	1 317	1 727	2.4	2.3	0.1	0.3
India	Hubli-Dharwad	City Proper	776	1 079	1 374	1.8	2.0	0.1	0.2
India	Hyderabad	Urban Agglomeration	5 650	9 482	12 714	2.9	2.4	0.7	2.1
India	Indore	Urban Agglomeration	1 486	2 822	3 918	3.6	2.7	0.2	0.6
India	Jabalpur	Urban Agglomeration	1 083	1 411	1 763	1.5	1.9	0.1	0.3
India	Jaipur	Urban Agglomeration	2 258	3 717	4 943	2.8	2.4	0.3	0.8
India	Jalandhar	Urban Agglomeration	698	1 014	1 304	2.1	2.1	0.1	0.2
India	Jamshedpur	Urban Agglomeration	1 084	1 543	1 974	2.0	2.1	0.1	0.3
India	Jodhpur	Urban Agglomeration	846	1 397	1 866	2.8	2.4	0.1	0.3
India	Kannur	Urban Agglomeration	1 208	2 048	2 766	2.9	2.5	0.2	0.4
India	Kanpur	Urban Agglomeration	2 664	3 081	3 715	0.8	1.6	0.2	0.7
India	Kochi (Cochin)	Urban Agglomeration	1 399	2 858	4 064	4.0	2.9	0.2	0.6
India	Kolkata (Calcutta)	Metropolitan area	13 097	14 681	17 584	0.6	1.5	1.1	3.2
India	Kollam	Urban Agglomeration	614	1 670	2 557	5.6	3.5	0.1	0.4
India	Kota	Urban Agglomeration	691	1 299	1 799	3.5	2.7	0.1	0.3
India	Kozhikode (Calicut)	Urban Agglomeration	1 090	3 175	4 993	5.9	3.8	0.2	0.7

Country or area	City	Statistical concept	City population (thousands)			Average annual rate of change (percentage)		City population as a proportion of the country or area's total or urban population in 2018 (percentage)	
			2000	2018	2030	2000-2018	2018-2030	Total population	Urban population
India	Lucknow	Urban Agglomeration	2 202	3 505	4 628	2.6	2.3	0.3	0.8
India	Ludhiana	City Proper	1 368	1 806	2 260	1.5	1.9	0.1	0.4
India	Madurai	Urban Agglomeration	1 211	1 676	2 133	1.8	2.0	0.1	0.4
India	Malappuram	Urban Agglomeration	762	2 950	4 976	7.5	4.4	0.2	0.6
India	Meerut	Urban Agglomeration	1 147	1 636	2 093	2.0	2.1	0.1	0.4
India	Moradabad	Urban Agglomeration	626	1 127	1 539	3.3	2.6	0.1	0.2
India	Mumbai (Bombay)	Metropolitan area	16 147	19 980	24 572	1.2	1.7	1.5	4.3
India	Mysore	Urban Agglomeration	787	1 162	1 504	2.2	2.2	0.1	0.3
India	Nagpur	Urban Agglomeration	2 095	2 808	3 534	1.6	1.9	0.2	0.6
India	Nashik	Urban Agglomeration	1 117	1 952	2 638	3.1	2.5	0.1	0.4
India	Patna	Urban Agglomeration	1 654	2 352	3 002	2.0	2.0	0.2	0.5
India	Pune (Poona)	Urban Agglomeration	3 667	6 276	8 442	3.0	2.5	0.5	1.4
India	Raipur	Urban Agglomeration	720	1 521	2 169	4.2	3.0	0.1	0.3
India	Rajkot	Urban Agglomeration	975	1 767	2 416	3.3	2.6	0.1	0.4
India	Ranchi	Urban Agglomeration	844	1 370	1 817	2.7	2.4	0.1	0.3
India	Salem	Urban Agglomeration	738	1 062	1 363	2.0	2.1	0.1	0.2
India	Solapur	City Proper	853	1 014	1 231	1.0	1.6	0.1	0.2
India	Srinagar	Urban Agglomeration	973	1 515	1 990	2.5	2.3	0.1	0.3
India	Surat	Urban Agglomeration	2 706	6 564	9 711	4.9	3.3	0.5	1.4
India	Thiruvananthapuram	Urban Agglomeration	1 045	2 369	3 474	4.5	3.2	0.2	0.5
India	Thrissur	Urban Agglomeration	1 042	2 774	4 221	5.4	3.5	0.2	0.6
India	Tiruchirappalli	Urban Agglomeration	876	1 134	1 415	1.4	1.8	0.1	0.2
India	Tiruppur	Urban Agglomeration	571	1 369	2 018	4.9	3.2	0.1	0.3
India	Vadodara	Urban Agglomeration	1 465	2 110	2 708	2.0	2.1	0.2	0.5
India	Varanasi (Benares)	Urban Agglomeration	1 204	1 615	2 036	1.6	1.9	0.1	0.4
India	Vijayawada	Urban Agglomeration	1 025	1 911	2 644	3.5	2.7	0.1	0.4
India	Visakhapatnam	Urban Agglomeration	1 323	2 076	2 732	2.5	2.3	0.2	0.5
Iran (Islamic Republic of)	Ahvaz	City Proper	868	1 212	1 394	1.9	1.2	1.5	2.0
Iran (Islamic Republic of)	Esfahan	City Proper	1 382	2 041	2 461	2.2	1.6	2.5	3.3
Iran (Islamic Republic of)	Karaj	City Proper	1 087	1 585	1 687	2.1	0.5	1.9	2.6

Country or area	City	Statistical concept	City population (thousands)			Average annual rate of change (percentage)		City population as a proportion of the country or area's total or urban population in 2018 (percentage)	
			2000	2018	2030	2000-2018	2018-2030	Total population	Urban population
Iran (Islamic Republic of)	Mashhad	City Proper	2 073	3 097	3 650	2.2	1.4	3.8	5.0
Iran (Islamic Republic of)	Qom	City Proper	843	1 241	1 469	2.2	1.4	1.5	2.0
Iran (Islamic Republic of)	Shiraz	City Proper	1 115	1 605	1 857	2.0	1.2	2.0	2.6
Iran (Islamic Republic of)	Tabriz	City Proper	1 264	1 582	1 781	1.2	1.0	1.9	2.6
Iran (Islamic Republic of)	Tehran	City Proper	7 128	8 896	10 240	1.2	1.2	10.8	14.5
Nepal	Kathmandu	City Proper	642	1 330	1 939	4.0	3.1	4.5	22.7
Pakistan	Faisalabad	Urban Agglomeration	2 098	3 311	4 401	2.5	2.4	1.6	4.5
Pakistan	Gujranwala	Urban Agglomeration	1 209	2 110	2 883	3.1	2.6	1.1	2.9
Pakistan	Hyderabad	Urban Agglomeration	1 210	1 782	2 323	2.1	2.2	0.9	2.4
Pakistan	Islamabad	City Proper	569	1 061	1 477	3.5	2.8	0.5	1.4
Pakistan	Karachi	Urban Agglomeration	9 825	15 400	20 432	2.5	2.4	7.7	20.9
Pakistan	Lahore	Urban Agglomeration	5 576	11 738	16 883	4.1	3.0	5.8	15.9
Pakistan	Multan	Urban Agglomeration	1 251	1 931	2 552	2.4	2.3	1.0	2.6
Pakistan	Peshawar	Urban Agglomeration	1 075	2 065	2 896	3.6	2.8	1.0	2.8
Pakistan	Quetta	Urban Agglomeration	602	1 042	1 420	3.0	2.6	0.5	1.4
Pakistan	Rawalpindi	Urban Agglomeration	1 477	2 156	2 805	2.1	2.2	1.1	2.9
South-Eastern Asia									
Cambodia	Phnum Pénh (Phnom Penh)	Urban Agglomeration	1 149	1 952	2 805	2.9	3.0	12.0	51.4
Indonesia	Bandar Lampung	City Proper	743	1 047	1 326	1.9	2.0	0.4	0.7
Indonesia	Bandung	City Proper	2 138	2 538	3 002	1.0	1.4	1.0	1.7
Indonesia	Batam	City Proper	415	1 401	2 065	6.8	3.2	0.5	0.9
Indonesia	Bekasi	City Proper	1 622	3 159	4 332	3.7	2.6	1.2	2.1
Indonesia	Bogor	City Proper	751	1 115	1 402	2.2	1.9	0.4	0.8
Indonesia	Depok	City Proper	1 121	2 503	3 564	4.5	2.9	0.9	1.7
Indonesia	Jakarta	Metropolitan area	8 390	10 517	12 687	1.3	1.6	3.9	7.1
Indonesia	Makassar (Ujung Pandang)	City Proper	1 077	1 530	1 900	1.9	1.8	0.6	1.0
Indonesia	Medan	City Proper	1 912	2 285	2 749	1.0	1.5	0.9	1.5
Indonesia	Palembang	City Proper	1 459	1 665	2 064	0.7	1.8	0.6	1.1
Indonesia	Pekan Baru	City Proper	588	1 138	1 500	3.7	2.3	0.4	0.8
Indonesia	Semarang	City Proper	1 427	1 800	2 245	1.3	1.8	0.7	1.2

Country or area	City	Statistical concept	City population (thousands)			Average annual rate of change (percentage)		City population as a proportion of the country or area's total or urban population in 2018 (percentage)	
			2000	2018	2030	2000-2018	2018-2030	Total population	Urban population
Indonesia	Surabaya	City Proper	2 611	2 903	3 413	0.6	1.4	1.1	2.0
Indonesia	Tangerang	City Proper	1 326	2 222	2 884	2.9	2.2	0.8	1.5
Malaysia	Kuala Lumpur	Metropolitan area	4 176	7 564	9 805	3.3	2.2	23.6	31.0
Myanmar	Mandalay	Urban Agglomeration	847	1 374	1 757	2.7	2.1	2.6	8.3
Myanmar	Yangon	Urban Agglomeration	3 573	5 157	6 389	2.0	1.8	9.6	31.3
Philippines	Davao City	City Proper	1 152	1 745	2 256	2.3	2.1	1.6	3.5
Philippines	Manila	Metropolitan area	9 958	13 482	16 841	1.7	1.9	12.7	27.0
Singapore	Singapore	Urban Agglomeration	3 914	5 792	6 342	2.2	0.8	100.0	100.0
Thailand	Chiang Mai	Urban Agglomeration	407	1 135	1 318	5.7	1.2	1.6	3.3
Thailand	Chon Buri	Urban Agglomeration	577	1 361	1 580	4.8	1.2	2.0	3.9
Thailand	Krung Thep (Bangkok)	Urban Agglomeration	6 395	10 156	12 101	2.6	1.5	14.7	29.4
Thailand	Samut Prakan	Urban Agglomeration	656	1 272	1 477	3.7	1.2	1.8	3.7
Viet Nam	Can Tho	City Proper	439	1 444	2 294	6.6	3.9	1.5	4.2
Viet Nam	Da Nang	City Proper	568	1 064	1 449	3.5	2.6	1.1	3.1
Viet Nam	Hà Nội	Urban Agglomeration	1 660	4 283	6 362	5.3	3.3	4.4	12.4
Viet Nam	Hai Phòng	Urban Agglomeration	599	1 219	1 698	4.0	2.8	1.3	3.5
Viet Nam	Thành Phố Hồ Chí Minh (Ho Chi Minh City)	Urban Agglomeration	4 389	8 145	11 054	3.4	2.5	8.4	23.5
Western Asia									
Armenia	Yerevan	City Proper	1 111	1 080	1 114	-0.2	0.3	36.8	58.3
Azerbaijan	Baku	Urban Agglomeration	1 806	2 286	2 659	1.3	1.3	23.0	41.4
Georgia	Tbilisi	City Proper	1 100	1 077	1 102	-0.1	0.2	27.6	47.0
Iraq	Al-Basrah (Basra)	City Proper	759	1 299	1 751	3.0	2.5	3.3	4.7
Iraq	Al-Mawsil (Mosul)	Urban Agglomeration	1 056	1 527	2 200	2.1	3.0	3.9	5.5
Iraq	Baghdad	Metropolitan area	5 200	6 812	9 365	1.5	2.7	17.3	24.6
Israel	Hefa (Haifa)	Metropolitan area	905	1 135	1 281	1.3	1.0	13.4	14.5
Israel	Tel Aviv-Yafo (Tel Aviv-Jaffa)	Metropolitan area	2 739	4 011	4 916	2.1	1.7	47.5	51.3
Jordan	Amman	City Proper	1 017	2 065	2 402	3.9	1.3	20.8	22.9
Kuwait	Al Kuwait (Kuwait City)	Urban Agglomeration	1 300	2 989	3 622	4.6	1.6	71.2	71.2
Lebanon	Bayrut (Beirut)	Urban Agglomeration	1 487	2 385	2 311	2.6	-0.3	39.1	44.2
Oman	Masqat (Muscat)	Urban Agglomeration	564	1 447	1 838	5.2	2.0	29.9	35.4

Country or area	City	Statistical concept	City population (thousands)			Average annual rate of change (percentage)		City population as a proportion of the country or area's total or urban population in 2018 (percentage)	
			2000	2018	2030	2000-2018	2018-2030	Total population	Urban population
Saudi Arabia	Ad-Dammam	City Proper	639	1 197	1 478	3.5	1.8	3.6	4.3
Saudi Arabia	Al-Madinah (Medina)	City Proper	795	1 430	1 744	3.3	1.7	4.3	5.1
Saudi Arabia	Ar-Riyadh (Riyadh)	City Proper	3 567	6 907	8 547	3.7	1.8	20.6	24.5
Saudi Arabia	Jiddah	City Proper	2 509	4 433	5 388	3.2	1.6	13.2	15.8
Saudi Arabia	Makkah (Mecca)	City Proper	1 168	1 967	2 379	2.9	1.6	5.9	7.0
Syrian Arab Republic	Dimashq (Damascus)	City Proper	2 017	2 320	3 387	0.8	3.2	12.7	23.4
Syrian Arab Republic	Halab (Aleppo)	Urban Agglomeration	2 204	1 754	2 993	-1.3	4.5	9.6	17.7
Syrian Arab Republic	Hims (Homs)	City Proper	856	1 295	1 891	2.3	3.2	7.1	13.1
Turkey	Adana	Urban Agglomeration	1 123	1 730	1 976	2.4	1.1	2.1	2.8
Turkey	Ankara	Urban Agglomeration	3 179	4 919	5 869	2.4	1.5	6.0	8.0
Turkey	Antalya	City Proper	595	1 184	1 481	3.8	1.9	1.4	1.9
Turkey	Bursa	Urban Agglomeration	1 180	1 916	2 263	2.7	1.4	2.3	3.1
Turkey	Gaziantep	Urban Agglomeration	880	1 632	1 967	3.4	1.6	2.0	2.7
Turkey	Istanbul	Urban Agglomeration	8 744	14 751	17 124	2.9	1.2	18.0	24.0
Turkey	Izmir	Urban Agglomeration	2 216	2 937	3 316	1.6	1.0	3.6	4.8
Turkey	Konya	Urban Agglomeration	734	1 271	1 535	3.0	1.6	1.6	2.1
United Arab Emirates	Abu Zaby (Abu Dhabi)	City Proper	505	1 420	1 739	5.7	1.7	14.9	17.2
United Arab Emirates	Ash-Shariqah (Sharjah)	City Proper	457	1 571	2 065	6.9	2.3	16.5	19.0
United Arab Emirates	Dubayy (Dubai)	Urban Agglomeration	907	2 785	3 315	6.2	1.5	29.2	33.7
Yemen	Sana'a	Urban Agglomeration	1 347	2 779	4 174	4.0	3.4	9.6	26.2
EUROPE									
Eastern Europe									
Belarus	Minsk	Urban Agglomeration	1 700	2 005	2 086	0.9	0.3	21.2	27.0
Bulgaria	Sofia	Urban Agglomeration	1 128	1 272	1 279	0.7	0.0	18.1	24.1
Czechia	Praha (Prague)	City Proper	1 172	1 292	1 345	0.5	0.3	12.2	16.5
Hungary	Budapest	City Proper	1 787	1 759	1 786	-0.1	0.1	18.2	25.5
Poland	Warszawa (Warsaw)	City Proper	1 666	1 768	1 800	0.3	0.2	4.6	7.7
Romania	Bucuresti (Bucharest)	City Proper	1 949	1 821	1 741	-0.4	-0.4	9.3	17.2
Russian Federation	Chelyabinsk	City Proper	1 082	1 216	1 252	0.6	0.2	0.8	1.1
Russian Federation	Kazan	City Proper	1 096	1 254	1 307	0.7	0.3	0.9	1.2

Country or area	City	Statistical concept	City population (thousands)			Average annual rate of change (percentage)		City population as a proportion of the country or area's total or urban population in 2018 (percentage)	
			2000	2018	2030	2000-2018	2018-2030	Total population	Urban population
Russian Federation	Krasnoyarsk	City Proper	911	1 111	1 187	1.1	0.6	0.8	1.0
Russian Federation	Moskva (Moscow)	City Proper	10 005	12 410	12 796	1.2	0.3	8.6	11.6
Russian Federation	Nizhniy Novgorod	City Proper	1 331	1 264	1 251	-0.3	-0.1	0.9	1.2
Russian Federation	Novosibirsk	City Proper	1 426	1 636	1 717	0.8	0.4	1.1	1.5
Russian Federation	Omsk	City Proper	1 136	1 184	1 183	0.2	-0.0	0.8	1.1
Russian Federation	Perm	City Proper	1 014	1 062	1 091	0.3	0.2	0.7	1.0
Russian Federation	Rostov-na-Donu (Rostov-on-Don)	City Proper	1 061	1 134	1 143	0.4	0.1	0.8	1.1
Russian Federation	Samara	City Proper	1 173	1 171	1 154	-0.0	-0.1	0.8	1.1
Russian Federation	Sankt Peterburg (Saint Petersburg)	City Proper	4 719	5 383	5 630	0.7	0.4	3.7	5.0
Russian Federation	Ufa	City Proper	1 049	1 129	1 153	0.4	0.2	0.8	1.1
Russian Federation	Volgograd	City Proper	1 010	1 014	992	0.0	-0.2	0.7	0.9
Russian Federation	Voronezh	City Proper	921	1 056	1 091	0.8	0.3	0.7	1.0
Russian Federation	Yekaterinburg	City Proper	1 303	1 482	1 546	0.7	0.3	1.0	1.4
Ukraine	Kharkiv	City Proper	1 484	1 436	1 404	-0.2	-0.2	3.3	4.7
Ukraine	Kyiv (Kiev)	City Proper	2 606	2 957	3 004	0.7	0.1	6.7	9.7
Ukraine	Odesa	City Proper	1 037	1 011	1 005	-0.1	-0.0	2.3	3.3
Northern Europe									
Denmark	København (Copenhagen)	Metropolitan area	1 077	1 321	1 442	1.1	0.7	23.0	26.1
Finland	Helsinki	Urban Agglomeration	1 019	1 279	1 386	1.3	0.7	23.1	27.0
Ireland	Dublin	Urban Agglomeration	989	1 201	1 374	1.1	1.1	25.0	39.6
Norway	Oslo	Urban Agglomeration	774	1 012	1 187	1.5	1.3	18.9	23.0
Sweden	Stockholm	Urban Agglomeration	1 206	1 583	1 814	1.5	1.1	15.9	18.1
United Kingdom	Birmingham (West Midlands)	Urban Agglomeration	2 285	2 570	2 802	0.7	0.7	3.9	4.6
United Kingdom	Glasgow	Metropolitan area	1 585	1 661	1 778	0.3	0.6	2.5	3.0
United Kingdom	London	Urban Agglomeration	7 273	9 046	10 228	1.2	1.0	13.6	16.3
United Kingdom	Manchester	Metropolitan area	2 345	2 690	2 934	0.8	0.7	4.0	4.8
United Kingdom	West Yorkshire	Metropolitan area	1 648	1 864	2 026	0.7	0.7	2.8	3.4
Southern Europe									
Greece	Athina (Athens)	Urban Agglomeration	3 179	3 156	3 163	-0.0	0.0	28.3	35.8
Italy	Milano (Milan)	Metropolitan area	2 985	3 132	3 209	0.3	0.2	5.3	7.5

Country or area	City	Statistical concept	City population (thousands)			Average annual rate of change (percentage)		City population as a proportion of the country or area's total or urban population in 2018 (percentage)	
			2000	2018	2030	2000-2018	2018-2030	Total population	Urban population
Italy	Napoli (Naples)	Metropolitan area	2 232	2 198	2 207	-0.1	0.0	3.7	5.3
Italy	Roma (Rome)	Metropolitan area	3 708	4 210	4 413	0.7	0.4	7.1	10.1
Italy	Torino (Turin)	Metropolitan area	1 694	1 786	1 834	0.3	0.2	3.0	4.3
Portugal	Lisboa (Lisbon)	Metropolitan area	2 672	2 927	3 085	0.5	0.4	28.4	43.6
Portugal	Porto	Urban Agglomeration	1 254	1 307	1 357	0.2	0.3	12.7	19.5
Serbia	Beograd (Belgrade)	Urban Agglomeration	1 257	1 389	1 423	0.6	0.2	15.9	28.3
Spain	Barcelona	City Proper	4 355	5 494	5 812	1.3	0.5	11.8	14.7
Spain	Madrid	City Proper	5 014	6 497	6 907	1.4	0.5	14.0	17.4
Western Europe									
Austria	Wien (Vienna)	City Proper	1 549	1 901	2 080	1.1	0.8	21.7	37.3
Belgium	Antwerpen	Metropolitan area	945	1 032	1 084	0.5	0.4	9.0	9.2
Belgium	Bruxelles-Brussel	Metropolitan area	1 783	2 050	2 182	0.8	0.5	17.8	18.2
France	Lille	Urban Agglomeration	1 002	1 054	1 126	0.3	0.5	1.6	2.0
France	Lyon	Urban Agglomeration	1 446	1 690	1 847	0.9	0.7	2.6	3.2
France	Marseille-Aix-en-Provence	Urban Agglomeration	1 476	1 599	1 695	0.4	0.5	2.5	3.0
France	Paris	Urban Agglomeration	9 737	10 901	11 710	0.6	0.6	16.7	20.8
Germany	Berlin	City Proper	3 384	3 552	3 606	0.3	0.1	4.3	5.6
Germany	Hamburg	City Proper	1 710	1 793	1 799	0.3	0.0	2.2	2.8
Germany	Köln (Cologne)	City Proper	963	1 096	1 167	0.7	0.5	1.3	1.7
Germany	München (Munich)	City Proper	1 202	1 504	1 610	1.2	0.6	1.8	2.4
Netherlands	Amsterdam	Urban Agglomeration	1 005	1 132	1 219	0.7	0.6	6.6	7.2
Netherlands	Rotterdam	Urban Agglomeration	991	1 008	1 049	0.1	0.3	5.9	6.4
Switzerland	Zürich (Zurich)	Urban Agglomeration	1 129	1 371	1 514	1.1	0.8	16.0	21.7
LATIN AMERICA AND THE CARIBBEAN									
Caribbean									
Cuba	La Habana (Havana)	City Proper	2 186	2 136	2 178	-0.1	0.2	18.6	24.1
Dominican Republic	Santo Domingo	Urban Agglomeration	1 997	3 172	3 913	2.6	1.7	29.1	36.0
Haiti	Port-au-Prince	Urban Agglomeration	1 693	2 637	3 488	2.5	2.3	23.7	42.9
Puerto Rico	San Juan	Metropolitan area	2 508	2 454	2 419	-0.1	-0.1	67.1	71.7

Country or area	City	Statistical concept	City population (thousands)			Average annual rate of change (percentage)		City population as a proportion of the country or area's total or urban population in 2018 (percentage)	
			2000	2018	2030	2000-2018	2018-2030	Total population	Urban population
Central America									
Costa Rica	San José	Urban Agglomeration	1 032	1 358	1 595	1.5	1.3	27.4	34.5
El Salvador	San Salvador	Metropolitan area	1 062	1 107	1 190	0.2	0.6	17.3	24.0
Guatemala	Ciudad de Guatemala (Guatemala City)	Metropolitan area	1 973	2 851	3 640	2.0	2.0	16.5	32.4
Honduras	Tegucigalpa	City Proper	752	1 363	1 851	3.3	2.5	14.5	25.4
Mexico	Aguascalientes	Metropolitan area	763	1 070	1 276	1.9	1.5	0.8	1.0
Mexico	Chihuahua	Metropolitan area	702	1 012	1 232	2.0	1.6	0.8	1.0
Mexico	Ciudad de México (Mexico City)	Metropolitan area	18 457	21 581	24 111	0.9	0.9	16.5	20.6
Mexico	Ciudad Juárez	Metropolitan area	1 223	1 480	1 730	1.1	1.3	1.1	1.4
Mexico	Cuernavaca	Metropolitan area	803	1 043	1 232	1.5	1.4	0.8	1.0
Mexico	Guadalajara	Metropolitan area	3 724	5 023	5 943	1.7	1.4	3.8	4.8
Mexico	La Laguna	Metropolitan area	891	1 490	2 013	2.9	2.5	1.1	1.4
Mexico	León de los Aldamas	Metropolitan area	1 280	1 780	2 075	1.8	1.3	1.4	1.7
Mexico	Mérida	Metropolitan area	810	1 122	1 342	1.8	1.5	0.9	1.1
Mexico	Mexicali	Metropolitan area	770	1 082	1 296	1.9	1.5	0.8	1.0
Mexico	Monterrey	Metropolitan area	3 405	4 712	5 621	1.8	1.5	3.6	4.5
Mexico	Puebla	Metropolitan area	2 285	3 097	3 669	1.7	1.4	2.4	3.0
Mexico	Querétaro	Metropolitan area	825	1 288	1 558	2.5	1.6	1.0	1.2
Mexico	San Luis Potosí	Metropolitan area	857	1 179	1 396	1.8	1.4	0.9	1.1
Mexico	Tijuana	Metropolitan area	1 365	2 058	2 491	2.3	1.6	1.6	2.0
Mexico	Toluca de Lerdo	Metropolitan area	1 553	2 354	2 909	2.3	1.8	1.8	2.2
Nicaragua	Managua	Urban Agglomeration	887	1 048	1 203	0.9	1.1	16.7	28.5
Panama	Ciudad de Panamá (Panama City)	Urban Agglomeration	1 216	1 783	2 247	2.1	1.9	42.8	63.3
South America									
Argentina	Buenos Aires	Urban Agglomeration	12 504	14 967	16 456	1.0	0.8	33.5	36.5
Argentina	Córdoba	Urban Agglomeration	1 348	1 548	1 715	0.8	0.9	3.5	3.8
Argentina	Mendoza	Urban Agglomeration	838	1 133	1 320	1.7	1.3	2.5	2.8
Argentina	Rosario	Urban Agglomeration	1 152	1 488	1 711	1.4	1.2	3.3	3.6
Bolivia (Plurinational State of)	Cochabamba	Urban Agglomeration	735	1 237	1 600	2.9	2.1	11.0	15.9
Bolivia (Plurinational State of)	La Paz	Urban Agglomeration	1 415	1 814	2 174	1.4	1.5	16.2	23.3

Country or area	City	Statistical concept	City population (thousands)			Average annual rate of change (percentage)		City population as a proportion of the country or area's total or urban population in 2018 (percentage)	
			2000	2018	2030	2000-2018	2018-2030	Total population	Urban population
Bolivia (Plurinational State of)	Santa Cruz	City Proper	1 049	1 641	2 068	2.5	1.9	14.6	21.1
Brazil	Baixada Santista	Metropolitan area	1 468	1 853	2 055	1.3	0.9	0.9	1.0
Brazil	Belém	Metropolitan area	1 724	2 280	2 546	1.6	0.9	1.1	1.2
Brazil	Belo Horizonte	Metropolitan area	4 807	5 972	6 583	1.2	0.8	2.8	3.3
Brazil	Brasília	Metropolitan area	2 932	4 470	5 199	2.3	1.3	2.1	2.4
Brazil	Campinas	Metropolitan area	2 332	3 210	3 627	1.8	1.0	1.5	1.8
Brazil	Curitiba	Metropolitan area	2 494	3 579	4 040	2.0	1.0	1.7	2.0
Brazil	Florianópolis	Metropolitan area	734	1 197	1 378	2.7	1.2	0.6	0.7
Brazil	Fortaleza	Metropolitan area	2 875	3 977	4 446	1.8	0.9	1.9	2.2
Brazil	Goiânia	Metropolitan area	1 635	2 565	3 056	2.5	1.5	1.2	1.4
Brazil	Grande São Luís	Metropolitan area	1 064	1 460	1 604	1.8	0.8	0.7	0.8
Brazil	Grande Vitória	Metropolitan area	1 435	2 003	2 311	1.9	1.2	0.9	1.1
Brazil	João Pessoa	Metropolitan area	1 018	1 347	1 502	1.6	0.9	0.6	0.7
Brazil	Joinville	Metropolitan area	924	1 270	1 427	1.8	1.0	0.6	0.7
Brazil	Maceió	Metropolitan area	952	1 294	1 440	1.7	0.9	0.6	0.7
Brazil	Manaus	City Proper	1 392	2 171	2 537	2.5	1.3	1.0	1.2
Brazil	Natal	Urban Agglomeration	879	1 395	1 642	2.6	1.4	0.7	0.8
Brazil	Pôrto Alegre	Metropolitan area	3 546	4 094	4 416	0.8	0.6	1.9	2.2
Brazil	Recife	Metropolitan area	3 205	4 028	4 509	1.3	0.9	1.9	2.2
Brazil	Rio de Janeiro	Metropolitan area	11 307	13 293	14 408	0.9	0.7	6.3	7.3
Brazil	Salvador	Metropolitan area	2 891	3 754	4 181	1.5	0.9	1.8	2.1
Brazil	São Paulo	Metropolitan area	17 014	21 650	23 824	1.3	0.8	10.3	11.9
Brazil	Teresina	Urban Agglomeration	788	1 001	1 108	1.3	0.8	0.5	0.5
Chile	Santiago	Urban Agglomeration	5 658	6 680	7 243	0.9	0.7	36.7	41.9
Colombia	Barranquilla	Urban Agglomeration	1 511	2 218	2 499	2.1	1.0	4.5	5.6
Colombia	Bogotá	Urban Agglomeration	6 329	10 574	12 343	2.9	1.3	21.4	26.5
Colombia	Bucaramanga	Urban Agglomeration	852	1 295	1 473	2.3	1.1	2.6	3.2
Colombia	Cali	Urban Agglomeration	1 929	2 726	3 039	1.9	0.9	5.5	6.8
Colombia	Cartagena	City Proper	740	1 047	1 150	1.9	0.8	2.1	2.6
Colombia	Medellín	Metropolitan area	2 733	3 934	4 344	2.0	0.8	8.0	9.8

Country or area	City	Statistical concept	City population (thousands)			Average annual rate of change (percentage)		City population as a proportion of the country or area's total or urban population in 2018 (percentage)	
			2000	2018	2030	2000-2018	2018-2030	Total population	Urban population
Ecuador	Guayaquil	Urban Agglomeration	2 077	2 899	3 511	1.9	1.6	17.2	26.9
Ecuador	Quito	City Proper	1 357	1 822	2 180	1.6	1.5	10.8	16.9
Paraguay	Asunción	Metropolitan area	1 700	3 222	3 920	3.6	1.6	46.7	75.9
Peru	Lima	Metropolitan area	7 294	10 391	12 266	2.0	1.4	31.9	41.0
Uruguay	Montevideo	Metropolitan area	1 600	1 737	1 819	0.5	0.4	50.1	52.5
Venezuela (Bolivarian Republic of)	Barquisimeto	Metropolitan area	946	1 189	1 352	1.3	1.1	3.7	4.2
Venezuela (Bolivarian Republic of)	Caracas	Metropolitan area	2 864	2 935	3 164	0.1	0.6	9.1	10.3
Venezuela (Bolivarian Republic of)	Maracaibo	Metropolitan area	1 525	2 179	2 574	2.0	1.4	6.7	7.6
Venezuela (Bolivarian Republic of)	Maracay	Metropolitan area	931	1 178	1 340	1.3	1.1	3.6	4.1
Venezuela (Bolivarian Republic of)	Valencia	Metropolitan area	1 392	1 860	2 144	1.6	1.2	5.7	6.5
NORTHERN AMERICA									
Canada	Calgary	Metropolitan area	927	1 477	1 779	2.6	1.6	4.0	4.9
Canada	Edmonton	Metropolitan area	924	1 397	1 673	2.3	1.5	3.8	4.6
Canada	Montréal	Metropolitan area	3 429	4 172	4 573	1.1	0.8	11.3	13.9
Canada	Ottawa-Gatineau	Metropolitan area	1 055	1 363	1 535	1.4	1.0	3.7	4.5
Canada	Toronto	Metropolitan area	4 607	6 082	6 793	1.5	0.9	16.5	20.2
Canada	Vancouver	Metropolitan area	1 959	2 531	2 834	1.4	0.9	6.8	8.4
United States of America	Atlanta	Urban Agglomeration	3 522	5 572	6 602	2.5	1.4	1.7	2.1
United States of America	Austin	Urban Agglomeration	911	1 915	2 453	4.1	2.1	0.6	0.7
United States of America	Baltimore	Urban Agglomeration	2 079	2 315	2 490	0.6	0.6	0.7	0.9
United States of America	Boston	Urban Agglomeration	4 036	4 308	4 581	0.4	0.5	1.3	1.6
United States of America	Charlotte	Urban Agglomeration	768	1 886	2 520	5.0	2.4	0.6	0.7
United States of America	Chicago	Urban Agglomeration	8 315	8 864	9 424	0.4	0.5	2.7	3.3
United States of America	Cincinnati	Urban Agglomeration	1 506	1 733	1 881	0.8	0.7	0.5	0.6
United States of America	Cleveland	Urban Agglomeration	1 786	1 776	1 852	-0.0	0.3	0.5	0.7
United States of America	Columbus, Ohio	Urban Agglomeration	1 139	1 598	1 832	1.9	1.1	0.5	0.6
United States of America	Dallas-Fort Worth	Urban Agglomeration	4 168	6 099	7 073	2.1	1.2	1.9	2.3
United States of America	Denver-Aurora	Urban Agglomeration	1 994	2 753	3 141	1.8	1.1	0.8	1.0
United States of America	Detroit	Urban Agglomeration	3 899	3 600	3 679	-0.4	0.2	1.1	1.3
United States of America	Houston	Urban Agglomeration	3 847	6 115	7 254	2.6	1.4	1.9	2.3

Country or area	City	Statistical concept	City population (thousands)			Average annual rate of change (percentage)		City population as a proportion of the country or area's total or urban population in 2018 (percentage)	
			2000	2018	2030	2000-2018	2018-2030	Total population	Urban population
United States of America	Indianapolis	Urban Agglomeration	1 225	1 753	2 021	2.0	1.2	0.5	0.7
United States of America	Jacksonville, Florida	Urban Agglomeration	886	1 244	1 427	1.9	1.1	0.4	0.5
United States of America	Kansas City	Urban Agglomeration	1 365	1 663	1 834	1.1	0.8	0.5	0.6
United States of America	Las Vegas	Urban Agglomeration	1 326	2 541	3 173	3.6	1.9	0.8	0.9
United States of America	Los Angeles-Long Beach-Santa Ana	Urban Agglomeration	11 798	12 458	13 209	0.3	0.5	3.8	4.6
United States of America	Louisville	Urban Agglomeration	866	1 073	1 188	1.2	0.9	0.3	0.4
United States of America	Memphis	Urban Agglomeration	974	1 139	1 241	0.9	0.7	0.3	0.4
United States of America	Miami	Urban Agglomeration	4 933	6 036	6 664	1.1	0.8	1.8	2.2
United States of America	Milwaukee	Urban Agglomeration	1 311	1 435	1 537	0.5	0.6	0.4	0.5
United States of America	Minneapolis-St. Paul	Urban Agglomeration	2 395	2 889	3 177	1.0	0.8	0.9	1.1
United States of America	Nashville-Davidson	Urban Agglomeration	755	1 199	1 422	2.6	1.4	0.4	0.4
United States of America	New York-Newark	Urban Agglomeration	17 813	18 819	19 958	0.3	0.5	5.8	7.0
United States of America	Orlando	Urban Agglomeration	1 165	1 882	2 242	2.7	1.5	0.6	0.7
United States of America	Philadelphia	Urban Agglomeration	5 156	5 695	6 114	0.6	0.6	1.7	2.1
United States of America	Phoenix-Mesa	Urban Agglomeration	2 923	4 359	5 081	2.2	1.3	1.3	1.6
United States of America	Pittsburgh	Urban Agglomeration	1 753	1 718	1 785	-0.1	0.3	0.5	0.6
United States of America	Portland	Urban Agglomeration	1 589	2 104	2 373	1.6	1.0	0.6	0.8
United States of America	Providence	Urban Agglomeration	1 175	1 205	1 267	0.1	0.4	0.4	0.4
United States of America	Raleigh	Urban Agglomeration	548	1 327	1 767	4.9	2.4	0.4	0.5
United States of America	Richmond	Urban Agglomeration	822	1 081	1 218	1.5	1.0	0.3	0.4
United States of America	Riverside-San Bernardino	Urban Agglomeration	1 516	2 374	2 804	2.5	1.4	0.7	0.9
United States of America	Sacramento	Urban Agglomeration	1 401	2 054	2 384	2.1	1.2	0.6	0.8
United States of America	Salt Lake City	Urban Agglomeration	891	1 147	1 284	1.4	0.9	0.4	0.4
United States of America	San Antonio	Urban Agglomeration	1 337	2 217	2 661	2.8	1.5	0.7	0.8
United States of America	San Diego	Urban Agglomeration	2 681	3 212	3 526	1.0	0.8	1.0	1.2
United States of America	San Francisco-Oakland	Urban Agglomeration	3 230	3 325	3 501	0.2	0.4	1.0	1.2
United States of America	San Jose	Urban Agglomeration	1 541	1 776	1 929	0.8	0.7	0.5	0.7
United States of America	Seattle	Urban Agglomeration	2 720	3 379	3 747	1.2	0.9	1.0	1.3
United States of America	St. Louis	Urban Agglomeration	2 079	2 213	2 351	0.3	0.5	0.7	0.8

Country or area	City	Statistical concept	City population (thousands)			Average annual rate of change (percentage)		City population as a proportion of the country or area's total or urban population in 2018 (percentage)	
			2000	2018	2030	2000-2018	2018-2030	Total population	Urban population
United States of America	Tampa-St. Petersburg	Urban Agglomeration	2 071	2 807	3 188	1.7	1.1	0.9	1.0
United States of America	Virginia Beach	Urban Agglomeration	1 396	1 478	1 569	0.3	0.5	0.5	0.5
United States of America	Washington, D.C.	Urban Agglomeration	3 949	5 207	5 868	1.5	1.0	1.6	1.9
OCEANIA									
Australia/New Zealand									
Australia	Adelaide	Metropolitan area	1 122	1 320	1 472	0.9	0.9	5.3	6.2
Australia	Brisbane	Metropolitan area	1 611	2 338	2 724	2.1	1.3	9.4	11.0
Australia	Melbourne	Metropolitan area	3 361	4 771	5 736	1.9	1.5	19.3	22.4
Australia	Perth	Metropolitan area	1 407	1 991	2 299	1.9	1.2	8.0	9.3
Australia	Sydney	Metropolitan area	3 780	4 792	5 566	1.3	1.2	19.3	22.5
New Zealand	Auckland	Urban Agglomeration	1 110	1 557	1 791	1.9	1.2	32.8	37.9

Data source: United Nations, Department of Economic and Social Affairs, Population Division (2018). *World Urbanization Prospects: The 2018 Revision*.

Notes

This annex table includes only cities with 1 million inhabitants or more on 1 July 2018.

A minus sign (-) before a figure indicates a decrease.

A full stop is used to indicate decimals.

Use of en dash (-) between years, for example 2000-2018, signifies the full period involved, from 1 July of the beginning year to 1 July of the end year.

