



Strengthening Health Systems For Current and Future Challenges

Carissa Etienne
Assistant Director General
Health Systems and Services



World Health
Organization

Overview

- 1. Our evolving world**
- 2. Where we are today**
- 3. What people want**
- 4. WHO's response**

Global context: local consequences

- Poverty and Inequity
- Financial crisis
- Globalization
- Urbanization
- Ageing
- Epidemiological changes
- Lifestyle changes
- Climate change

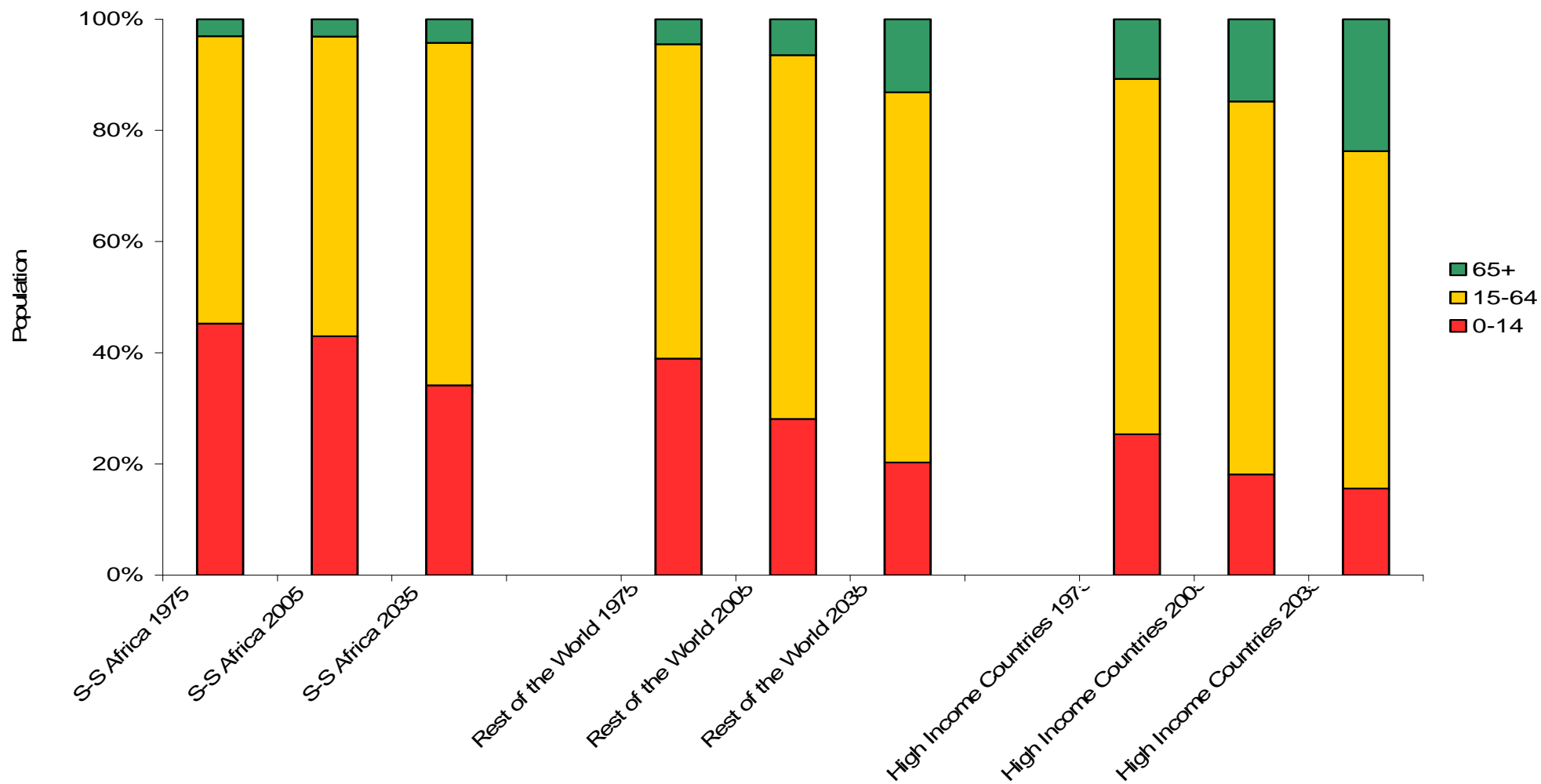


Urbanization

- 1 billion people live in urban slums.
- 170 million urban residents do not have access to a latrine.
- Nearly 1.2 million people will die from urban air pollution.



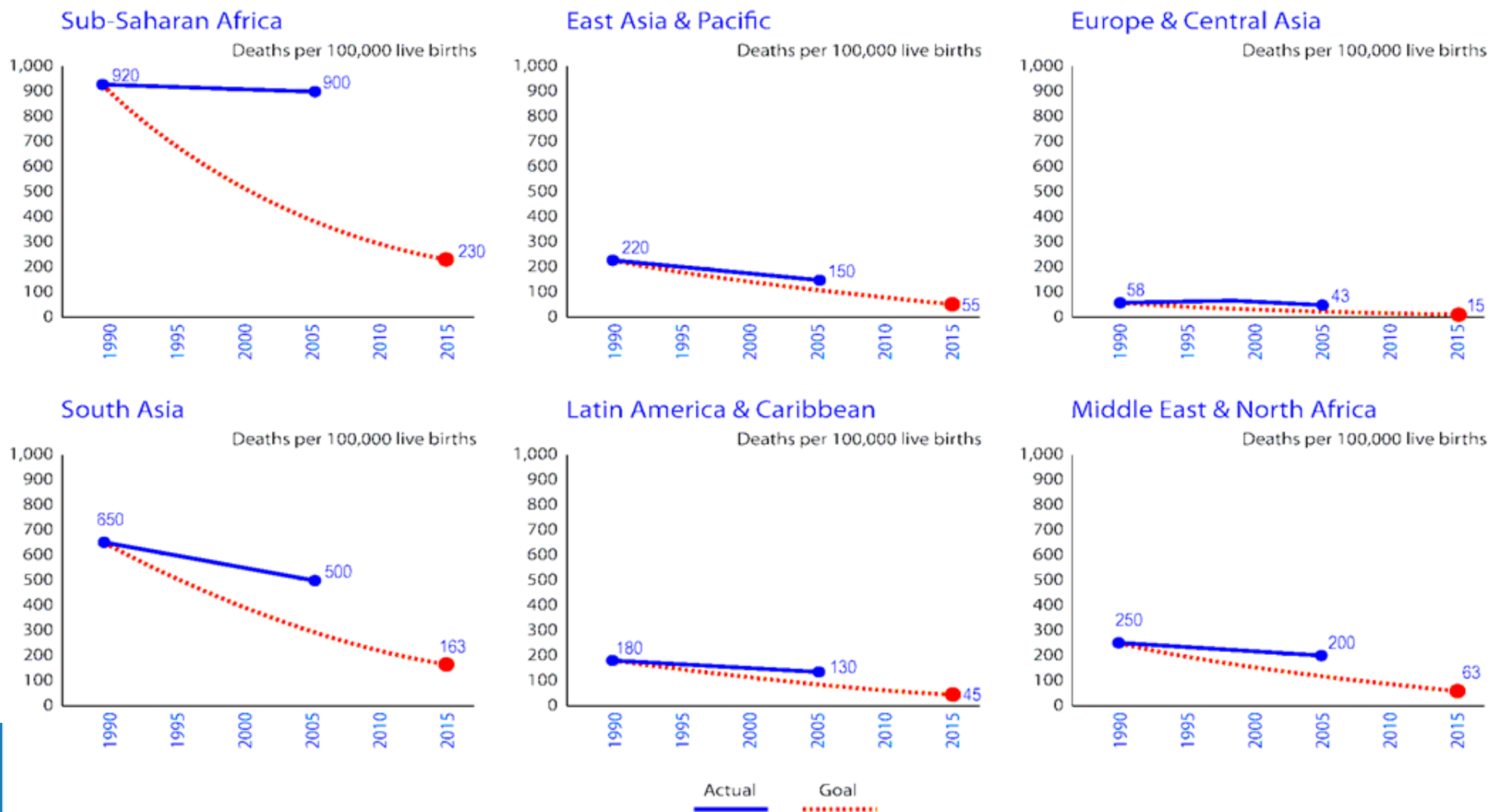
Ageing populations



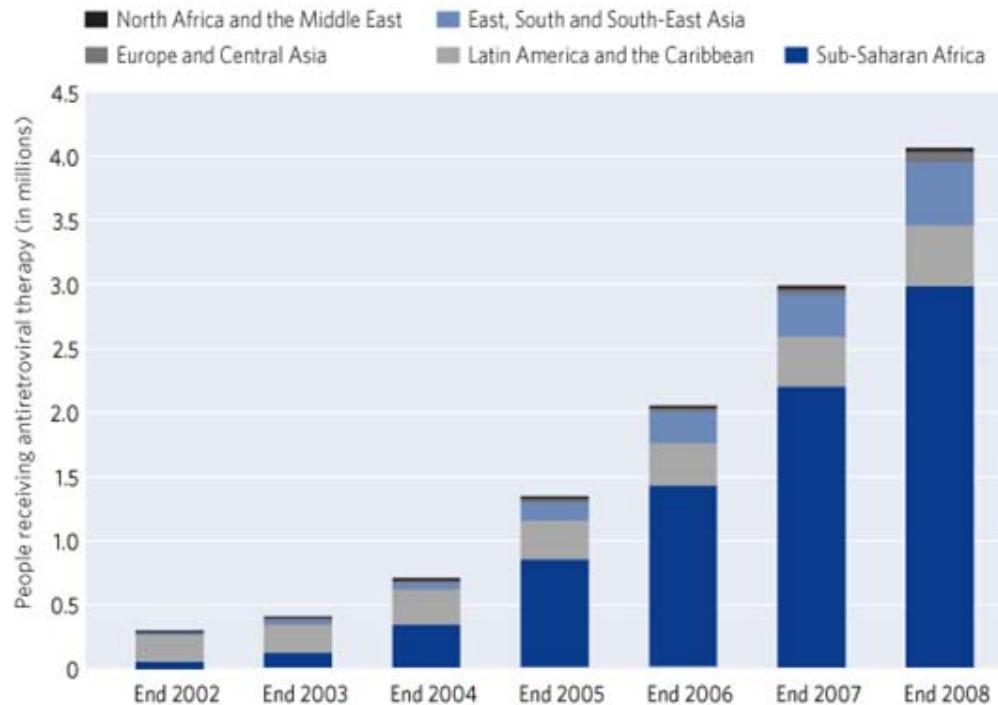
10 leading causes of disease burden, 2004 & 2030

2004 Disease or injury	As % of total DALYs	Rank		Rank	As % of total DALYs	2030 Disease or injury
Lower respiratory infections	6.2	1	→	1	6.2	Unipolar depressive disorders
Diarrhoeal diseases	4.8	2	→	2	5.5	Ischaemic heart disease
Unipolar depressive disorders	4.3	3	→	3	4.9	Road traffic accidents
Ischaemic heart disease	4.1	4	→	4	4.3	Cerebrovascular disease
HIV/AIDS	3.8	5	→	5	3.8	COPD
Cerebrovascular disease	3.1	6	→	6	3.2	Lower respiratory infections
Prematurity and low birth weight	2.9	7	→	7	2.9	Hearing loss, adult onset
Birth asphyxia and birth trauma	2.7	8	→	8	2.7	Refractive errors
Road traffic accidents	2.7	9	→	9	2.5	HIV/AIDS
Neonatal infections and other ^a	2.7	10	→	10	2.3	Diabetes mellitus
COPD	2.0	13	→	11	1.9	Neonatal infections and other ^a
Refractive errors	1.8	14	→	12	1.9	Prematurity and low birth weight
Hearing loss, adult onset	1.8	15	→	15	1.9	Birth asphyxia and birth trauma
Diabetes mellitus	1.3	19	→	18	1.6	Diarrhoeal diseases

Progress on MDG 5 (maternal health)



Increase in antiretroviral therapy



Challenges to scaling up services for HIV, TB, malaria and immunization

HIV/UA assessment report

- Inadequate financing
- HR crisis
- Affordable commodities
- Stigma, discrimination...
- Accountability

Global Plan to stop TB

- Partnership alignment
- Inadequate financing
- Laboratory capacity
- HR crisis
- Quality drugs

World Malaria report

- Drug efficacy
- Information system
- Inadequate financing
- HRH and Community services
- M&E

GAVI/Norad report

- HR crisis
- Inadequate financing
- Leadership and management
- Inter-agency coordination



What people want

- Long healthy lives
- A fair deal
- A say in what affects their lives
- To be treated as human beings
- Reliable health authorities
- Access to affordable, good quality health care



What people get

- Inverse care
- Impoverishing care
- Fragmented care
- Unsafe care
- Misdirected care



Health systems building blocks

Human resources

Medicines and technologies

Governance

Financing

Service delivery

Information

Promote primary health care reforms





Health systems building blocks





Human resources

WHO helps countries address gaps in:

- numbers/distribution
- skills mix
- training



Medicines and technologies

WHO helps countries:

- Ensure quality of medicines and diagnostics
- Ensure appropriateness/affordability
- Maintain efficient logistics systems
- Assure access to essential medicines and technologies



Governance

WHO helps countries:

- Improve efficiency
- Increase aid effectiveness
- Promote accountability
- Design and implement regulatory frameworks



Financing

WHO helps countries:

- Raise money for health
- Protect people from financial consequences of ill health
- Make optimum use of resources



Service delivery

WHO helps countries:

- Maintain primary care teams close to communities
- Provide patient-centred care
- Provide services through the life-course
- Provide integrated/comprehensive care

Information



Support National Health Strategies

SALUD

Programa Nacional
Por un México sano: construyémoslo juntos

The Icelandic National Health Strategy to the year 2015

The United Republic of Tanzania
Ministry of Health and Social Welfare

Health Sector Strategic Plan III
July 2009 – June 2015

"Partnership for Delivering the MDGs"



Health systems a means to an end