

Plenary Session VIa: Running the Microsimulations A Short Stata Overview

Martín Cicowiez
CEDLAS-UNLP

Marco V Sánchez
UN-DESA

Presentation for the Third Training Workshop of the
Project “Assessing Development Strategies to Achieve the
MDGs in Asia”, Jakarta, March 30 – April 2, 2010

Outline

- An Introduction to Stata
- Stata Basic Commands
 - will be used to prepare the dataset for microsimulations

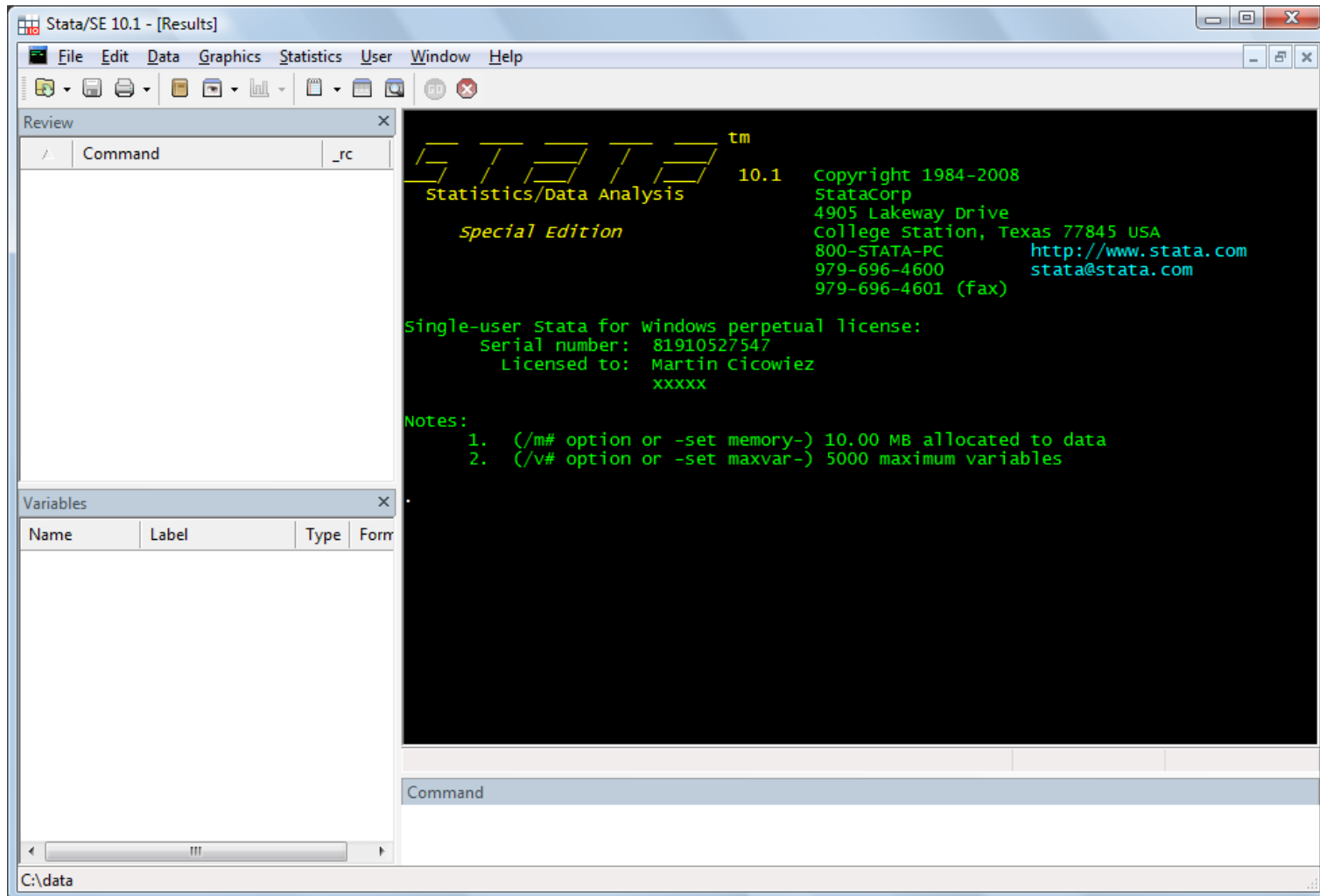
Stata Basics

- Stata is a statistical package that can be used to analyze and manipulate data, econometric analysis, and programming.
- Information about Stata can be found at [<www.stata.com>](http://www.stata.com).
- Other useful internet resources are
 - [<www.ats.ucla.edu/stat/stata>](http://www.ats.ucla.edu/stat/stata)
 - [<www.cpc.unc.edu/services/computer/presentations/statatutorial>](http://www.cpc.unc.edu/services/computer/presentations/statatutorial)
 - [<www.princeton.edu/~erp/stata>](http://www.princeton.edu/~erp/stata)

Installing STATA

- Run the setup.exe file.
- Run STATA for the first time and enter the license information.
- Suggestion. Read “Getting Started with Stata” and the “User’s Guide”. Read the rest of the documentation selectively, according to your needs.
- In case of a problem, use the help command.

The Stata Interface



The Stata Interface

- Stata can be used by means of menus. However, it is more flexible to use the command line.
- The Stata interface is comprised of four windows:
 - review
 - variables
 - Stata results
 - Stata command
- The commands can be introduced “immediately” through the command line or through text files - known as do files - that Stata executes line by line.

The Language Syntax

The basic language syntax for Stata commands is

```
[by varlist:] command [varlist] [=exp] [if exp]  
                    [in range] [weight]  
                    [using filename] [, options]
```

where the elements in brackets are optional.

Some Basic Commands

- clear everything
 - `clear`
- setting the memory size for the database
 - `set mem 100m`
- setting the path
 - `cd "C:\Data"`
- importing an EXCEL database
 - `insheet using "my-data.csv", comma`

Some Basic Commands – cont.

- **computing basic statistics**
 - `summarize ypc`
 - `summarize ypcf [w=popwt]`
 - `summarize ylab [w=popwt] if age >=25 & and age <=55`
- **generate new variables**
 - `generate ypc2 = ypc^2`
- **tabulate data**
 - `table skill [w=popwt], c(mean ylab)`

Some Basic Commands – cont.

- renaming variables

- `rename ypc2 ypcf22`

- eliminating variables

- `drop ypc22`

- replacing values

- `replace male=0 if male==1`

Do Files and Log Files

- A do file is a text file with Stata code that Stata runs line by line, as if the sentences were written in the Stata command window.
- A log file is a text file with all the results that appear in the Stata results window.
 - the user selects when to start and when to stop logging to the log file