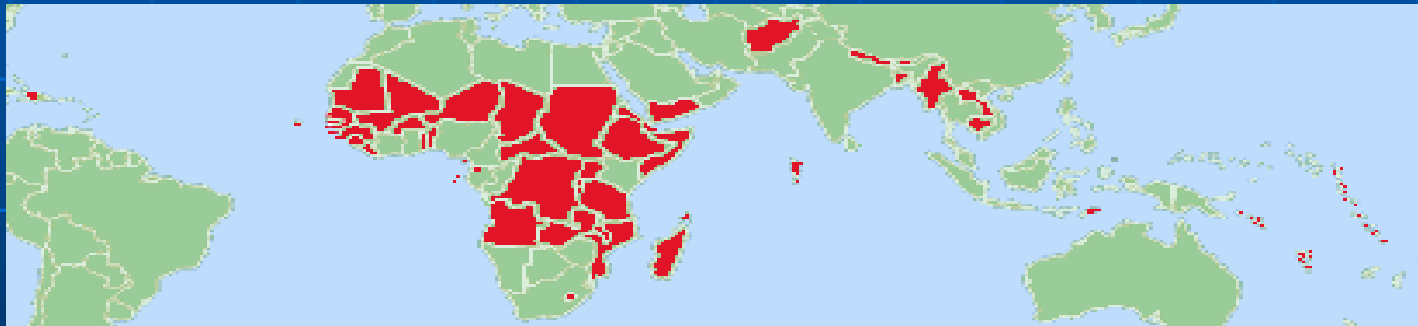




Istanbul Trade and Development Symposium on LDCs Implementation and monitoring of the UNLDC IV Outcome 10 May 2011



Ana Luiza Cortez, Secretary
Committee for Development Policy
UN-DESA

Structure

1. The Committee for Development Policy
2. Identifying LDCs
3. The Istanbul Plan Of Action
4. Monitoring goals: Triennial Reviews
5. Monitoring actions: International Support Measures

The CDP and its Secretariat

CDP : Subsidiary body of ECOSOC (resolution 1998/46)

- Policy advice
- Identification of LDCs:
 - triennial reviews
 - monitoring of graduating and graduated LDCs

CDP Secretariat (DESA/DPAD):

- dissemination of CDP work
- substantive support

→ Work on procedures related to the LDC category and its support measures

Least Developed Countries = Low-income countries + facing structural handicaps to growth

GNI per capita (as a measure of income)

Structural impediments to sustained growth:

1. Level of human development measured by the Human Asset Index (HAI),
2. Structural vulnerability to shocks proxied by the Economic Vulnerability Index (EVI)

Istanbul Plan of Action

Overarching goal:

Overcome the structural challenges to eradicate poverty, achieve IADGs and enable graduation from the LDC category

Specific objectives

Enable half of LDCs to meet graduation criteria by 2020

- Achieve growth in LDCs at least 7 per cent per annum (GNI)
- Build human capacities (HAI)
- Reduce the vulnerability of LDCs to economic, natural and environmental shocks (EVI)
- Ensure financial resources and their effective use for LDCs' development (all)
- Enhance good governance at all levels (all)

Indicators Monitored at the Triennial Reviews

HAI

- % undernourished
- U5MR
- Gross secondary enrolment
- Adult literacy

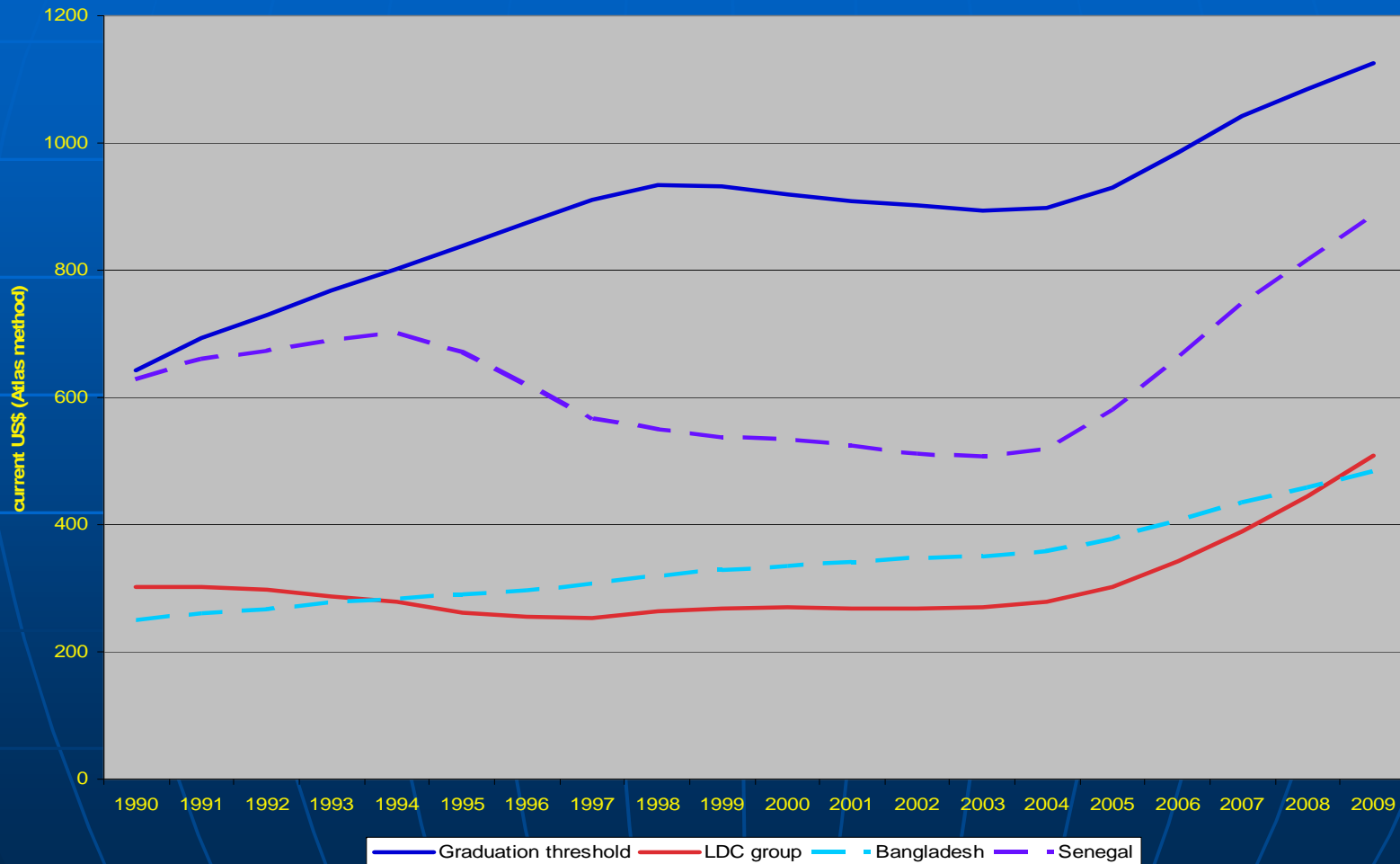
GNI per capita

EVI

- Population
- Remoteness
- Export concentration (goods)
- Agric., Forestry and Fisheries (% GDP)
- Homelessness
- Agricultural production
- Exports of goods and services

Graduation is a moving target

Income graduation threshold, 1990-2009



Istanbul Plan of Action

Meet graduation criteria: satisfying the graduation threshold of two of the three criteria (GNI, HAI, EVI).

Actions and Targets in the following priority areas to meet goals:

- Productive capacity (EVI, GNI)
 - Agriculture, food security and rural development (all)
 - Trade (GNI, EVI)
 - Commodities (GNI, EVI)
 - Human and social development (HAI)
 - Multiple Crises and other Emerging Challenges (all)
 - Mobilization of financial resources (all)
 - Good governance at all levels (all)
-
- ➔ IPoA more in tune with the CDP concept of LDC than previous plans
 - ➔ Graduation as an explicit objective for the first time.
 - ➔ But do LDCs have the tools to execute agreed actions?

Special Support Measures for LDCs

A. Official Development Assistance:

- ⇒ Financial flows and technical assistance
- ⇒ Bilateral and multilateral donors

B. International trade:

- ⇒ SDT on WTO obligations
- ⇒ Market Access

C. Other forms of support:

- ⇒ Caps contribution to UN budget, PKO discount contributions
- ⇒ Travel funds
- ⇒ Technical assistance funds
- ⇒ Others

Except for (A), special support measures for LDCs understood as category-specific, not available for other developing countries and subject to being phased out with graduation

Special Support Measures: effectiveness

Supply side:

- design flaws (including not attuned to LDC conditions)
- gaps in delivery
- “neutralizers”
- lack of coherence in international policy making
- under funded
- disconnected to goals
- difficult to locate and access

Demand side:

- unaware of existing measures and conditions
- lack of ownership
- not pro-active

PORTAL STRUCTURE

Five content areas for information retrieval and analysis



least developed countries
information portal



data retrieval

- » bilateral oda
- » multilateral oda
- » wto provisions for ldc
- » market access for ldc

survey results

- » ldc
- » bilateral donors and trading partners
- » multilateral donors

macro-model

- » small islands
- » scenario analysis

e-learning

- » case studies
- » learning modules
- » reports

online networking

- » blog
- » forum
- » contact ldc
- » contact bilateral development partners
- » contact trading partners
- » contact multilateral development partners

WHAT CAN PORTAL DO TO HELP?

- Consolidate access of information on availability, utilization and obstacles
- Increase awareness of measures and conditions
- Assist in identifying gaps in access and delivery
- Support institutional capacity building to apply for and access the measures
- Enhance ownership of the measures
- Providing tools to become more pro-active, including in preparing for smooth transition



Enhanced use of the measures
Improved support

Additional information

CDP Secretariat:

www.un.org/en/development/desa/policy/cdp/lcd_project.shtml

LDC Information Portal on International Support Measures

www.un.org/lcdportal

May 11, 2001

(Special side event at IV UN Conference on LDCs)