

# The Rosia Montana Project by The Rosia Montana Gold Corporation



## The Rosia Montana Project - Gabriel Resources

### Building a Model Means First Building a Model Future Community

The story of Rosia Montana, or ancient Alburnus Maior, as it was known during Roman times, has been closely intertwined with gold mining for almost two thousand years. The presence of gold, and its exploitation, has directly influenced the area's rise in fortune –and its decline in recent years due to state-mine closures. Romania's Rosia Montanawas once the pride of the Apuseni Mountains. However, the region suffers today from the ravages of two millennia of uncontrolled mining.

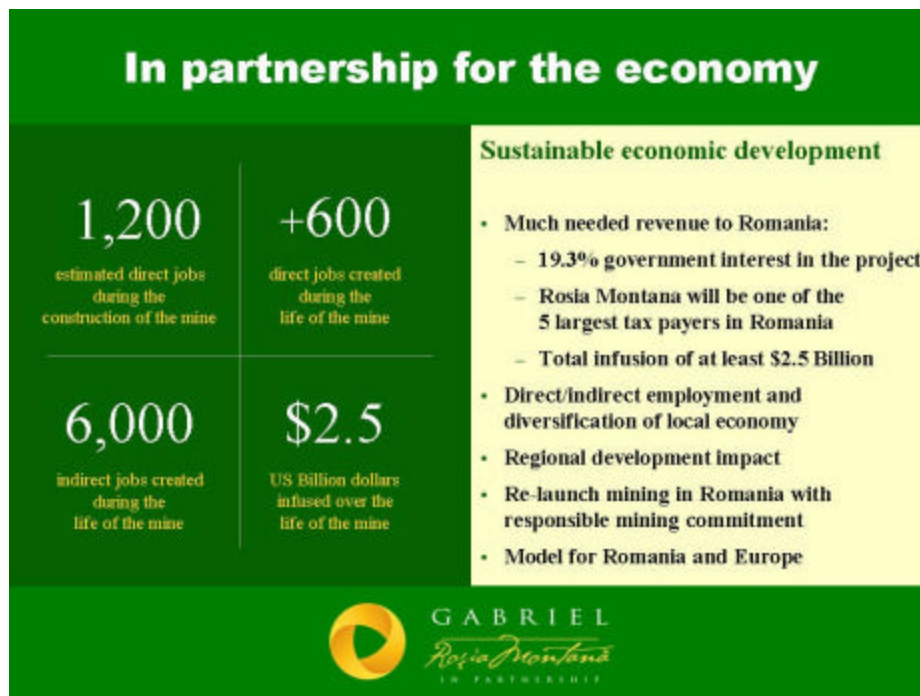


And yet, mining may once again prove to save Rosia Montana from further decline. Gabriel Resources –principal owner of the mineral rights through its Romanian subsidiary, the Rosia Montana Gold Corporation (RMGC), working in partnership under the title of Gabriel Rosia

Montana—proposes to conduct another mining operation. This, however, promises to be a model mining project not only for Romania and the European Union but also for future mining projects worldwide. The publicly traded, Toronto-based firm, vows to apply modern extraction methods to the project in Western Transylvania and implement the highest environmental standards.

The company is committed to helping revitalize Rosia and her surroundings, with a view to achieving long-term, sustainable growth—and nothing less than providing a cornerstone for regional development. Alongside the significant infusion of capital and jobs, Rosia Montana Project, a partnership of public and private associations working together, proposes to support the many elements that make this area rich in heritage through a strong commitment to international standards of corporate, social, environmental and cultural responsibility.

Across the life of the mine, the Rosia Montana Project will infuse more than US\$2.5 billion into Romania’s economy, accounting for a considerable portion of the country’s Foreign Direct Investment. [see project’s financial benefits]



To that end, the company has begun working with various NGOs and other types of organizations to develop a series of community programs that span and foster Rosia Montana’s social, educational, environmental, and cultural heritage. These programs, or centers of excellence, are grounded in the spirit of working in partnership with those who share a development commitment to the area.

As part of the project’s Social initiatives, the company has initiated with local NGOs a “Good Neighbor” program addressing the needs of the most vulnerable members of the community, the elderly, as well as for young people. To help tighten the community fabric, the company has launched a couple of community centers, opened an Internet club and a fitness room.

At the behest of the local chapter of a major international youth NGO that helped us understand the need for youth initiatives in the area, we have helped launch a dedicated center in nearby Abrud for young people to have as a resource and networking base.

In partnership with another well-known Romanian NGO, we have begun an Educational Partnership program for children as young as kindergarten age and through primary school, to

help them learn better and for those coming from vulnerable families help them integrate into the mainstream educational system. This program, which started as a pilot Summer School project, also provides ample teacher training and seeks to involve the community in education.

Our investment in Rosia, and Romania, is foremost an investment in people. We are dedicated to helping residents of Rosia and the surrounding communities develop personally and professionally through a series of training and business opportunities. Our vocational courses, offered regularly by certified professional instructors in partnership with local authorities, are designed to both prepare the next generation of the area's workforce as well as help people fulfill their potential.

To encourage much-needed local entrepreneurs and stimulate regional sustainable development, we have launched a micro-bank initiative that will help finance individual start-ups, as well as existing small and medium-sized firms.

As part of the commitment to the Environment, the Rosia Montana Project seeks to remedy the damage caused over the centuries, as well as restore and protect the area, so that future generations can enjoy its unique beauty. One of our partnerships, Rosia Montana Environmental Partnership, (RMEP), was established to help improve the environmental condition of Rosia Montana and neighboring areas, as well as raise community awareness about the need to do so.

Rosia Montana Project's Cultural Heritage Research Programme is a real commitment to Social Responsibility as it documents the community's proud history and allows the project to focus its efforts on creating a real balance between restoring this treasure and advancing the region's economic development.

One of the more innovative parts of our project, however, is the way we are planning for the future of the area. Before we build a mine, we must first build a community.

The cornerstone of that commitment is the development of the new village of Piatra Alba. Piatra Alba is being built for the people of Rosia Montana.

The idea was not to change a way of life, but to offer hope and opportunity to all who call it home. Piatra Alba was designed for the people of Rosia Montana, not to change a way of life, but to improve it –to create a community that cares for its elders and gives its young people a reason to stay. [see photos of new village]





Gabriel Resources's Community Development Initiative showcases our commitment to quality of life by improving Rosia Montana's schools, health care facilities, housing and basic infrastructure.

The new, model, village is situated amidst scenic forests with spectacular views to the south and west, and is linked to the wider world by free bus service. Designed by a collaborative team of Romanian and North American architects, the new village will combine all modern amenities with a respect for tradition to create a place where people will want to raise their families and build a future.

Piatra Alba has been designed to keep people together in a modern community that respects traditions and the architecture of the past. The village will have a medical and dental facility, town hall, community centre, school, post office, and village stores –which in large part are missing from the old town –and will also accommodate a variety of churches. All of the public buildings will surround a series of pedestrian plazas in classic Transylvanian style.

The new village will also host a hotel and restaurant, and in our new Information Age, the village will be “wireless” for Internet capability. We plan to break ground by the fall of 2007 for the new village of Piatra Alba.

Gabriel Resources is a Canadian resource company committed to responsible mining and sustainable development in the communities in which it operates. Gabriel Resources is currently engaged in the exploration and development of mineral properties in Romania and is presently engaged in the development of its 80% owned Rosia Montana gold project.