



# General Assembly

Distr.: General  
26 March 2001

Original: English

## Fifty-sixth session

### Proposed programme budget for the biennium 2002-2003\*

#### Part V Regional cooperation for development

#### Section 20 Economic and social development in Western Asia

(Programme 18 of the medium-term plan for the period 2002-2005)

## Contents

	<i>Page</i>
Overview .....	3
A. Policy-making organs .....	6
B. Executive direction and management .....	7
C. Programme of work .....	9
Subprogramme 1. Management of water, energy and the environment for sustainable development .....	9
Subprogramme 2. Promoting social change for sustainable development .....	13
Subprogramme 3. Economic development and regional cooperation during the evolution of a globalized world economy .....	16
Subprogramme 4. Coordination of sectoral policies and harmonization of norms and standards for sustainable development within global changes .....	19

\* The present document contains section 20 of the proposed programme budget for the biennium 2002-2003. The approved programme budget will subsequently be issued in final form as *Official Records of the General Assembly, Fifty-sixth Session, Supplement No. 6 (A/56/6/Rev.1)*.



---

Subprogramme 5. Development, coordination and harmonization of statistics . . . . .	23
D. Programme support . . . . .	26
Annex	
Indicative resource requirements . . . . .	30

---

## **Section 20**

### **Economic and social development in Western Asia**

**(Programme 18 of the medium-term plan for the period 2002-2005)**

#### **Overview**

- 20.1 The programme of work under this section has been elaborated within the framework of programme 18 of the medium-term plan for the period 2002-2005 (A/55/6/Rev.1) and will be implemented by the Economic and Social Commission for Western Asia. It includes five interlinked subprogrammes.
- 20.2 The main challenges that the ESCWA region has to grapple with are: (a) a scarcity of water resources and the existence of substantial, but unequally distributed, fossil energy resources; (b) the constraints posed on development by existing social problems, such as the uneven distribution of the benefits of development, high unemployment rates, poverty, high rates of population growth, the need to accelerate the participation of women in the development process, random urbanization and the need to effect a transition to participatory decision-making; (c) the need to achieve a balanced integration in the world economy while safeguarding regional interests; (d) the necessity of harmonizing sectoral policies, norms and standards to facilitate regional integration as well as integration into the world economy; and (e) limited accessibility to and usage of timely, reliable and harmonized data and statistics that would facilitate comparison, analysis and, consequently, decision-making in various sectors.
- 20.3 The main orientation of this programme in addressing some of the foregoing challenges is derived from the directives of the Beirut Declaration, adopted by ESCWA member States during the twentieth session of the Commission, in May 1999, which delineated the general principles of the work of the Commission during the twenty-first century. It is further derived from the conclusions of the Regional Hearing in Preparation for the United Nations Millennium Assembly. The broad principles underscored by the Beirut Declaration and the Regional Hearing were translated into a plan of action aimed at reflecting these principles in subsequent ESCWA programmes of work, which will be underscored in the work of ESCWA over more than one biennium. The main features of the current programme of work are as follows:
- (a) The challenges posed by the limited availability of water resources in the ESCWA region will be addressed by promoting policies, measures and technologies targeted at rationalization of the use of resources, the development of conventional and non-conventional water resources, the management of integrated water resources, the promotion of new and renewable energy applications, and pollution control and environmental protection. In doing so, ESCWA would be the only regional organization addressing this issue from a multidisciplinary perspective;
  - (b) The promotion of the formulation of social policies as part and parcel of development policies and the establishment of links between economic and social policies in development planning in relation to the foregoing social challenges is another priority, which will be addressed during the biennium. Within this context, the issues of gender mainstreaming, reproductive health, participatory approach to decision-making and the interlinkages between culture and development are some of the landmarks, whereby the latter issue is being addressed for the first time. In connection with social policies, follow-up to the recommendations of major United Nations global conferences in the field of social development at the regional level will remain a principal area of concern;

- (c) ESCWA will continue to support member States in understanding the economic and social implications of globalization for their development by underscoring the advantages thereof and proposing ways and means for mitigating its adverse effects. ESCWA will also address the issue of economic diversification and the future role of oil, which is a main source of income for a number of ESCWA member countries. It will continue to address economic reform policies by examining the role of the private sector versus that of the public sector in economic management and decision-making;
  - (d) Closely related to the issue of economic and social impact of globalization is the need to promote technological know-how to enhance the competitiveness of goods and services and to upgrade sectoral technological capabilities. Here, emphasis will be placed on information and communication technologies, selected industrial technologies and biotechnologies. Furthermore, a continuing major endeavour in sectoral development is evidenced in the continuation of efforts to facilitate regional integration and transboundary crossing through the promotion of the integrated system in the Arab Mashreq;
  - (e) Efforts to expand the provision of social statistics, the availability of which is relatively limited compared with economic statistics, will continue with a view to supporting policy formulation in this area. Emphasis during this biennium will be placed on the development of computerized database modules in various statistical areas and on the use of reliable harmonized statistics. Taking advantage of the opportunities afforded by information technology, increased dissemination of the work of ESCWA in statistics will be done through additional subject-specific home pages and databases.
- 20.4 The multidisciplinary approach to various issues such as water-related technologies and environmentally sound technologies, environment issues, poverty, gender, partnership between the public and private sectors and globalization, will continue.
- 20.5 The overall resources under this section amount to \$49,082,200, including resource growth of \$500,800 (or 1 per cent). The changes reflected in table 20.2 below are summarized as follows:
- (a) The increase of \$606,700 under executive direction and management is the result of the establishment of one new P-4 post and the redeployment of two P-3 posts from programme support in order to strengthen the Office of the Executive Secretary (\$598,200), and increases of \$2,000 under general temporary assistance and \$6,500 under travel;
  - (b) The increase of \$422,200 under the programme of work relates to the establishment of one new P-3 post under subprogramme 5, Development, coordination, and harmonization of statistics, and the reclassification of a Local level post to P-2/1 under subprogramme 2, Promoting social change for sustainable development (\$222,800); and additional requirements of \$32,100 under general temporary assistance, \$46,800 under consultants, \$116,500 under ad hoc expert groups and \$4,000 under travel;
  - (c) The decrease of \$528,100 under programme support is the net result of redeployment of two P-3 posts to the area of executive direction and management and the delayed impact of the establishment in 2000-2001 of one P-4 and one Local level posts to provide support to IMIS operations (\$279,000), as well as increases and decreases under various non-post objects of expenditure (\$249,100) as follows: decreases of (a) \$34,100 under general temporary assistance; (b) \$4,000 under travel; (c) \$9,700 under contractual services; and (d) \$269,600 under general operating expenses. These decreases are offset by increases of \$20,000 under consultants to provide specialized services for external evaluation of ESCWA activities, building and security operations and \$48,300 for furniture and equipment.

- 20.6 During the biennium 2002-2003, extrabudgetary resources amounting to \$124,900 will be utilized to supplement resources from the regular budget to finance activities related to training for local community development workers and for community development in Arab rural areas, the establishment of a computer-training centre in Lebanon and an electronic Braille documentation centre for the Arab region, and for the development and maintenance of the ESCWA Population Policies Information System.
- 20.7 Owing to the particular situation of the region, ESCWA has always found it difficult to estimate the level of extrabudgetary resources which may be contributed for its activities. Owing to the efforts of its secretariat, however, ESCWA has succeeded, in the course of the bienniums 1998-1999 and 2000-2001, in mobilizing more resources than those which had initially been indicated.
- 20.8 The Advisory Committee established by ESCWA in its resolution 175 (XV) of 18 May 1989 to facilitate consultations between the ESCWA secretariat and member States has been consulted on the content of the programme of work. It is further expected that the Commission will review the programme of work at its twenty-first session, in May 2001.
- 20.9 The percentage distribution of resources under this section will be as shown in table 20.1.

Table 20.1 **Percentage distribution of resources by component**

<i>Component</i>	<i>Regular budget</i>	<i>Extrabudgetary</i>
A. Policy-making organs	0.2	-
B. Executive direction and management	4.7	-
C. Programme of work	45.3	-
Subprogramme 1. Management of water, energy and the environment for sustainable development	8.1	-
Subprogramme 2. Promoting social change for sustainable development	11.4	100.0
Subprogramme 3. Economic development and regional cooperation during the evolution of a globalized world economy	8.2	-
Subprogramme 4. Coordination of sectoral policies and harmonization of norms and standards for sustainable development within global changes	11.6	-
Subprogramme 5. Development, coordination and harmonization of statistics	6.0	-
D. Programme support	49.8	-
<b>Total</b>	<b>100.0</b>	<b>100.0</b>

Table 20.2 **Resource requirements by component**

(Thousands of United States dollars)

(1) *Regular budget*

Component	1998-1999 expenditure	2000-2001 appropri- ation	Resource growth		Total before recosting	Recosting	2002-2003 estimate
			Amount	Percentage			
Policy-making organs	75.8	109.8	-	-	109.8	3.3	113.1
Executive direction and management	2 373.5	1 700.8	606.7	35.6	2 307.5	73.5	2 381.0
Programme of work	18 172.5	21 782.5	422.2	1.9	22 204.7	725.5	22 930.2
Programme support	21 351.8	24 988.3	(528.1)	(2.1)	24 460.2	785.0	25 245.2
<b>Total</b>	<b>41 973.6</b>	<b>48 581.4</b>	<b>500.8</b>	<b>1.0</b>	<b>49 082.2</b>	<b>1 587.3</b>	<b>50 669.5</b>

(2) *Extrabudgetary*

	1998-1999 expenditure	2000-2001 estimate	2002-2003 estimate
<b>Total</b>	<b>3 823.2</b>	<b>3 731.0</b>	<b>124.9</b>
<b>Total (1) and (2)</b>	<b>45 796.8</b>	<b>52 312.4</b>	<b>50 794.4</b>

Table 20.3 **Post requirements**

Category	Established regular budget posts		Temporary posts				Total	
			Regular budget		Extrabudgetary			
	2000- 2001	2002- 2003	2000- 2001	2002- 2003	2000- 2001	2002- 2003	2000- 2001	2002- 2003
<b>Professional and above</b>								
USG	1	1	-	-	-	-	1	1
D-1/D-2	8	8	-	-	-	-	8	8
P-1/P-5	94	98	1	-	4	1	99	99
<b>Subtotal</b>	<b>103</b>	<b>107</b>	<b>1</b>	<b>-</b>	<b>4</b>	<b>1</b>	<b>108</b>	<b>108</b>
<b>General Service</b>	163	163	1	-	7	-	171	163
<b>Total</b>	<b>266</b>	<b>270</b>	<b>2</b>	<b>-</b>	<b>11</b>	<b>1<sup>a</sup></b>	<b>279</b>	<b>271</b>

<sup>a</sup> P-2/1 associate expert post provided on non-reimbursable basis.**A. Policy-making organs****Resource requirements (before recosting): \$109,800**

- 20.10 The Economic and Social Commission for Western Asia comprises 13 member States. The Commission meets biennially, normally at its headquarters. Until the twentieth session, held in 1999, the Commission session was preceded by a session of the Technical Committee, which was redesignated as the Preparatory Committee in accordance with Commission resolution 223 (XX) of 27 May 1999. Beginning with the twenty-first session of the Commission, to be held in 2001, the Preparatory Committee will be part of the session and will meet prior to the plenary of the

Commission to consider agenda items and prepare the work of the Plenary. During the biennium 2002-2003, the Commission will hold its twenty-second session in 2003, including three days for the Preparatory Committee and two days for the plenary. The intergovernmental machinery of the Commission includes six subsidiary bodies to assist the Commission with programmatic issues, such as monitoring and evaluating programme performance, and to provide advice on the formulation of work programmes in their respective areas of competence. These six intergovernmental committees are: (a) the Statistical Committee, established by ESCWA in its resolution 179 (XVI) of 2 September 1992; (b) the Committee on Social Development, established by ESCWA in its resolution 198 (XVII) of 31 May 1994; (c) the Committee on Energy, established by ESCWA in its resolution 204 (XVIII) of 25 May 1995; (d) the Committee on Water Resources, established by ESCWA in its resolution 205 (XVIII) of 25 May 1995; (e) the Committee on Transport, established by ESCWA in its resolution 213 (XIX) of 7 May 1997; and (f) the Technical Committee on Liberalization of Foreign Trade and Economic Globalization in the countries of the ESCWA region, established by ESCWA in its resolution 214 (XIX) of 7 May 1997. These subsidiary bodies hold their sessions biennially. During the biennium 2002-2003, the sequence and dates of their sessions will be as follows: the fifth session of the Statistical Committee (3 days in 2003); the fourth session of the Committee on Social Development (2 days in 2003); the third session of the Committee on Energy (2 days in 2003); the fourth session of the Committee on Water Resources (2 days in 2002); the third session of the Committee on Transport (2 days in 2003); the third session of the Technical Committee on Liberalization of Foreign Trade and Economic Globalization in the countries of the ESCWA region (2 days in 2003).

Table 20.4 **Resource requirements**

Category	<i>Resources (thousands of United States dollars)</i>		<i>Posts</i>	
	2000-2001	2002-2003	2000-2001	2002-2003
		<i>(before recosting)</i>		
Non-post	109.8	109.8	-	-
<b>Total</b>	<b>109.8</b>	<b>109.8</b>	-	-

- 20.11 A provision of \$109,800 under temporary assistance for meetings, reflecting no growth, is required for providing interpretation, translation and general temporary assistance during the session of the Commission, including the Preparatory Committee, as well as the sessions of its six subsidiary committees.

## **B. Executive direction and management**

### ***Resource requirements (before recosting): \$2,307,500***

- 20.12 Executive direction and management comprise the functions of the Office of the Executive Secretary and the Information Services.
- 20.13 The Office of the Executive Secretary provides overall direction, programme oversight, planning, coordination and integrated management and policy guidelines to the substantive divisions and for technical cooperation and other activities of the Commission; maintains effective and regular contact with representatives of member States with a view to discussing substantive issues of concern to member States and to the region; takes effective steps towards more effective collaboration and coordination between ESCWA and the United Nations Secretariat, specialized

agencies and international and regional intergovernmental and non-governmental organizations; and gives overall direction to information services rendered by the ESCWA secretariat.

- 20.14 The Office of the Executive Secretary oversees the functioning of the intergovernmental machinery of the Commission, including its biennial session and its subsidiary bodies. It also coordinates the activities of the secretariat of the United Nations Regional Coordination Group (RCG), established in 1999 to further facilitate consultations with all United Nations entities in the ESCWA region, as well as of the ESCWA Advisory Committee, established by ESCWA in its resolution 175 (XV) of 18 May 1989 to facilitate consultations between the ESCWA secretariat and member States.
- 20.15 In addition, the Office of the Executive Secretary administers public information functions through the joint services of the United Nations Information Centre/United Nations Information Services. These activities, including those undertaken jointly with the Department of Public Information, have steadily increased since the relocation of ESCWA to Beirut. Activities will aim at increasing public awareness and understanding of the work conducted by the United Nations in general and ESCWA and the United Nations specialized agencies in the home country in particular, and will include the issuance of press releases, bulletins and information kits, the development of quality audio and video programmes, the production of an ESCWA information booklet, the issuance of occasional pamphlets or brochures to cover special events, interviews, press conferences, round-table discussions, preparation of lectures and briefings on United Nations issues.

Table 20.5 **Resource requirements**

Category	Resources (thousands of United States dollars)		Posts	
	2000-2001	2002-2003 (before recosting)	2000-2001	2002-2003
Post	1 565.7	2 163.9	9	12
Non-post	135.1	143.6	-	-
<b>Total</b>	<b>1 700.8</b>	<b>2 307.5</b>	<b>9</b>	<b>12</b>
Extrabudgetary	-	-	-	-

- 20.16 The amount of \$2,307,500 provides for: (a) staffing requirements of \$2,163,900, reflecting an increase of \$598,200, which is due to the establishment of the P-4 post of Chief of Protocol/Coordination and the inward redeployment of two P-3 posts from programme support, and (b) non-post requirements of \$143,600, which reflect a slight increase over the prior biennium due to the decentralization of general temporary assistance from programme support and the provision of additional travel funds in line with the increased size of the Office.
- 20.17 The provision of these additional posts will strengthen the functions of the Office of the Executive Secretary in overseeing, coordinating and consolidating activities under the programme of work, ensuring the implementation of policy recommendations and improving coordination with member States and other organizations.

## C. Programme of work

Table 20.6 Resource requirements by subprogramme

<i>Subprogramme</i>	<i>Resources (thousands of United States dollars)</i>		<i>Posts</i>	
	<i>2000-2001</i>	<i>2002-2003 (before recosting)</i>	<i>2000-2001</i>	<i>2002-2003</i>
1. Management of water, energy and environment for sustainable development	3 947.4	3 957.8	19	19
2. Promoting social change for sustainable development	5 295.5	5 594.0	27	27
3. Economic development and regional cooperation during the evolution of a global world economy	4 013.2	4 021.2	19	19
4. Coordination of sectoral policies and harmonization of norms and standards for sustainable development	5 699.8	5 692.1	26	26
5. Development, coordination and harmonization of statistics and information	2 826.6	2 939.6	16	17
<b>Total</b>	<b>21 782.5</b>	<b>22 204.7</b>	<b>107</b>	<b>108</b>
Extrabudgetary	2 893.4	124.9	9	1

### **Subprogramme 1 Management of water, energy and the environment for sustainable development**

***Resource requirements (before recosting): \$3,957,800***

- 20.18 This subprogramme is under the responsibility of the Energy, Natural Resources and Environment Division. The programme of work has been formulated by drawing upon subprogramme 1 of programme 18 of the medium-term plan for the period 2002-2005.

Table 20.7 **Objectives for the biennium, expected accomplishments and indicators of achievement**

**Objective:** To achieve better management of water, energy and the environment and, through integrated approaches, positively impact sustainable development in the region.

<i>Expected accomplishments</i>	<i>Indicators of achievement</i>
(a) Improved policy frameworks and wider application, by member States, of economically viable environment-friendly technological options to rationalize the use and enhance the sustainability of water and energy resources in the supply and demand sectors.	(a) (i) Number of countries favourably responding to water and energy policies and technological options recommended by ESCWA in the water and energy sectors;  (ii) Number of countries adopting the guidelines recommended for the management of shared groundwater resources and for more efficient use of energy.
(b) Increased awareness and application in the countries of the region of internationally recognized standards with respect to integrated management of water and renewable energy resources, and the environment.	(b) Number of countries applying internationally recognized environmental standards and protocols, especially in relation to water and energy resources.
(c) Improved coverage of rural women in studies dealing with water, energy and the environment by highlighting the impact of improved access to (and quality of) water and renewable energy technologies on the quality of women's lives, and by introducing appropriate recommendations for spreading environmental awareness among urban and rural women.	(c) (i) Extent of coverage of rural women in studies dealing with drought and water quality and renewable energy;  (ii) Degree of inclusion of urban and rural women as a target group in studies dealing with propagating environmental public awareness.

### External factors

- 20.19 The subprogramme is expected to achieve its objectives and expected accomplishments on the assumption that: (a) relevant and reliable information and databases will be available to the secretariat; (b) member States will be willing to accede to environmental conventions and implement existing legislation and policy recommendations and guidelines in the areas of energy, water and the environment; and (c) member States will be willing to further promote the role of the private sector and civil institutions in the water and energy sectors.

### Outputs

- 20.20 During the biennium 2002-2003, the following outputs will be delivered:

- (a) Servicing of intergovernmental and expert bodies
- (i) Committee on Energy
- a. Substantive servicing of four meetings of the fourth session of the Committee on Energy;

- b. Parliamentary documentation: a report to the Commission on the fourth session of the Committee on Energy;
  - (ii) Committee on Water Resources
    - a. Substantive servicing of six meetings of the fifth session of the Committee on Water Resources;
    - b. Parliamentary documentation: a report to the Commission on the fifth session of the Committee on Water Resources;
  - (iii) Ad hoc expert groups: four expert group meetings on: (a) efficient energy management in the industrial and tourism sectors; (b) promotion of public awareness and participation in environmental decision-making in the ESCWA region; (c) renewable energy and sustainable development in ESCWA member countries: water desalination and capacity-building; and (d) water supply and demand management measures;
- (b) Other substantive activities
  - (i) Thirteen non-recurrent publications: assessment and enhancement of water quality management in the ESCWA region; assessment of the role of the private sector in the development and management of water supply in selected ESCWA member countries; capacity-building: an approach to poverty alleviation and gender mainstreaming in the field of renewable energy; development of applications for energy intensive waste-heat recovery systems in the industrial sector; efficient energy management in the tourism sector for a cleaner environment; mechanism for enhancement of regional cooperation in the management of groundwater resources; promotion of public awareness and participation in environmental decision-making in the ESCWA region; sectoral water allocation policies in selected ESCWA member countries: an evaluation of the economic and social impacts; substantive report of the expert group meeting on water supply and demand management measures; substantive report of the workshop on a legal framework for shared groundwater development and management in the ESCWA region; survey and assessment of drought preparedness measures in the ESCWA region with emphasis on water resources; the role of the energy sector in augmenting the supply of water and protecting its quality with emphasis on renewable energy desalination and water pumping; updating the status of energy sector reforms in the ESCWA region;
  - (ii) Technical material such as databases and software: maintenance of ESCWA home page on water;
- (c) International cooperation and inter-agency coordination and liaison
  - (i) Cooperation, coordination, liaison with other international governmental and non-governmental institutions and organizations as follows: the Arab Center for the Study of Arid Zones and Dry Lands on water-related issues; the Council of Arab Ministers responsible for environment in the fields of desertification, industrial pollution, environmental awareness and networking, environmental indicators and international environmental conventions; the Center for Environment and Development for the Arab Region and Europe on shared water resources, including groundwater; the European Union, the World Energy Efficiency Association and the International Energy Agency on energy sector reforms, renewable energy and management of shared water resources; the International Centre for Agricultural Research in the Dry Areas on wadi hydrology, management of irrigation water, drought preparedness and the establishment of a database on water; the International Solar Energy Society, Arab Section; the Joint

Committee on Environment and Development in the Arab Region on regional approaches to environment and sustainable development; the League of Arab States and its subsidiary bodies in the field of energy and in the fields of water and environment; the Organization of the Islamic Conference and its subsidiary bodies with regard to capacity-building in the energy sector, rural energy schemes, capacity-building in the water sector, water law and administration, and water resources management; the World Water Council regarding follow-up to the recommendations of the World Water Forum and the Arab Water Vision; the International Union for Conservation of Nature and Natural Resources on environmental issues and priorities;

- (ii) Coordination and cooperation with UNDP on mitigating the drought effects in the region; the Department of Economic and Social Affairs on energy policies for sustainable development, the preparation of the World Water Development Report, and/or capacity-building to improve water management; the regional commissions on renewable energy promotion, and integrated approach and enhancement of regional cooperation in shared groundwater resources; UNEP on drought mitigation and on methods of environmental management; UNESCO and WHO on issues pertaining to water strategy and pollution control; participation in the annual meetings of the Administrative Committee on Coordination Subcommittee on Water Resources; the Committee on Energy and Natural Resources for Development and Cooperation and/or the Commission on Sustainable Development;
- (d) Technical cooperation
- (i) Technical assistance: assistance to selected countries in the field of energy, water and environment;
  - (ii) Group training (training courses, seminars and workshops): a workshop on a legal framework for shared groundwater development and management in the ESCWA region and another on renewable energy assessment and capacity-building.

Table 20.8 **Resource requirements: subprogramme 1**

Category	Resources (thousands of United States dollars)		Posts	
	2000-2001	2002-2003	2000-2001	2002-2003
		(before recosting)		
<b>Regular budget</b>				
Post	3 657.3	3 657.3	19	19
Non-post	290.1	300.5	-	-
<b>Total</b>	<b>3 947.4</b>	<b>3 957.8</b>	<b>19</b>	<b>19</b>
Extrabudgetary	31.5	-	-	-

- 20.21 The increase of \$10,400 is due to the distribution among subprogrammes of part of the provision for general temporary assistance, previously budgeted under programme support.

## Subprogramme 2 Promoting social change for sustainable development

*Resource requirements (before recosting): \$5,594,000*

- 20.22 This subprogramme is under the responsibility of the Social Development Issues and Policies Division. The programme of work has been formulated by drawing upon subprogramme 2 of programme 18 of the medium-term plan for the period 2002-2005.

Table 20.9 **Objectives for the biennium, expected accomplishments and indicators of achievement**

**Objective:** To achieve social change that is region-specific and culturally sensitive in the direction of social equity, through sustainable human development and gender equity and equality within an enabling environment, while advocating good governance and human rights.

<i>Expected accomplishments</i>	<i>Indicators of achievement</i>
(a) Improved capacity of member States to incorporate social issues into development planning and to formulate social policies, strategies and programmes, taking into consideration the gender component.	(a) (i) Number of member States initiating new social programmes, policies and strategies;  (ii) Number of countries introducing changes in existing social policies.
(b) Increased awareness among member States of the implications of globalization on key cross-cutting social issues and increased usage of indicators emanating from global conferences to monitor them.	(b) Increase in the number of countries using indicators to monitor the implication of globalization on social issues, especially poverty reduction, gender equality and urbanization issues.
(c) Increased awareness of gender issues among policy makers and the public at large and improved capacity of member States for gender mainstreaming in government policies and programmes.	(c) Number of member States having mainstreamed a gender perspective into their policies and programmes.
(d) Establishment of networking mechanisms for social development among partners and actors in the development process, especially with institutions of civil society at the regional level.	(d) Number of networks/mechanisms and committees established within Governments and with institutions of civil society at the national and/or regional levels.

### External factors

- 20.23 The subprogramme is expected to achieve its objectives and expected accomplishments on the assumption that: (a) the requisite basic social statistics and indicators will be available, especially gender sensitive statistics and indicators, for recommending judicious social policies; (b) member States will be committed to the formulation and integration of social policies into their development plans, and to mainstreaming a gender perspective into these plans.

**Outputs**

20.24 During the biennium 2002-2003, the following outputs will be delivered:

- (a) Servicing of intergovernmental and expert bodies
  - (i) Economic and Social Council: parliamentary documentation: two reports on the economic and social repercussions of the Israeli occupation on the living conditions of the Palestinian people in the occupied Palestinian territory, including Jerusalem, and the Arab population in the occupied Syrian Golan;
  - (ii) Committee on Social Development: (a) substantive servicing of six meetings of the fourth session of the Committee on Social Development; and (b) parliamentary documentation: two reports to the Commission on the fourth session of the Committee on Social Development and on institutional mechanisms for coordinating the implementation of social policies and programmes in the ESCWA region;
  - (iii) Ad hoc expert groups: five expert group meetings on: institutional mechanisms for coordinating the implementation of social policies and programmes in the ESCWA region; security of tenure in the ESCWA region; ageing in the ESCWA region; the Arab family in a globalized and rapidly changing society; and urban governance in the ESCWA region;
- (b) Other substantive activities
  - (i) Nine recurrent publications: demographic and related socio-economic data sheets, No. 12; human settlement data sheets; population bulletin, Nos. 50 and 51; regional human development report; review of developments in the situation of Arab women in the ESCWA region, Nos. 1 and 2; studies on women and development series: globalization, poverty and gender division of labour in selected ESCWA countries, No. 30, and gender, citizenship and the role of NGOs in selected Gulf countries, No. 31;
  - (ii) Fourteen non-recurrent publications: evaluation of training activities for local community development workers; globalization, education and skill formation in the ESCWA region; good practices in promoting joint activities between international organizations and NGOs for the disabled: a case study of the role of ESCWA in Lebanon; housing policies, urban municipal affairs and security of tenure; instruction manual and training package for trainers in local community development; local governance and participatory development; non-governmental organizations and implementation of the United Nations global conferences of the 1990s; population explosion, cities and poverty; report on the use of the Population Policies Information System in participating countries (2002 and 2003); the girl child in the Arab family of the Gulf Cooperation Council countries; towards a culture of democracy and accountable governance in ESCWA region: a conceptual framework; urbanization and socio-cultural change;
  - (iii) Booklets, fact sheets, wall charts, information kits: four brochures on local community development; one brochure on the Population Policies Information System (PPIS); PPIS policy-kits on the justification and the potential use of the system;
  - (iv) Technical material (such as databases, software): annotated bibliographic database on Arab women and family; database on developments in the situation of women in the ESCWA countries: development and maintenance of country profiles; development and maintenance of the ESCWA home page for social issues and gender issues; maintenance of the Regional Information System on Social Policies and relevant indicators for

monitoring and follow-up to global conferences; and the Population Policies Information System home page;

- (v) Electronic, audio-visual issuances: documentary videotape on the regional project “Training of local community development workers”; media campaign on gender and gender mainstreaming;
- (c) International cooperation
- (i) International cooperation, coordination and liaison with international, governmental and non-governmental institutions and organizations as follows: the Arab Gulf Programme for United Nations Development Organizations on community development, operational activities and disability issues; the Regional Center on Agrarian Reform and Rural Development for the Near East on community development activities; the Center of Arab Women for Training and Research on issues relating to women, gender, family and development; the League of Arab States and its relevant subsidiary bodies on issues relating to human development, poverty, family, women, human settlements and follow-up to global conferences; the Council of Arab Ministers on housing and reconstruction;
  - (ii) Coordination of activities with the Department of Economic and Social Affairs, INSTRAW and UNIFEM on issues related to women, gender and the family; the World Bank in the development and implementation of joint activities in the areas of poverty reduction and sustainable human development; Habitat on human settlements; UNDP on the regional human development report, on follow-up to the recommendations of global conferences; poverty and human development; UNFPA on population and demographic issues, and the implementation of the Population Policies Information System; UNICEF with regard to the implementation of and follow-up to the recommendations and key actions of the 10-year review of the World Summit for Children, and community development;
- (d) Technical cooperation
- (i) Assistance to selected countries in: national machinery for women and governmental bodies, including mainstreaming a gender perspective into policies, programmes and projects; poverty reduction and employment issues; promotion of accessibility in the urban environment; support for and promotion of local urban observatories; sustainable human development;
  - (ii) Group training (training courses, seminars and workshops): four regional workshops on: the Population Policies Information System; integrating population issues into development planning: methods and applications; the Regional Information System on Social Policies and relevant indicators; integrating population and reproductive health into development planning: methods and applications;
  - (iii) Field projects: community development services.

Table 20.10 Resource requirements: subprogramme 2

Category	Resources (thousands of United States dollars)		Posts	
	2000-2001	2002-2003 (before recosting)	2000-2001	2002-2003
Regular budget				
Post	5 087.9	5 188.8	27	27
Non-post	207.6	405.2	-	-
<b>Total</b>	<b>5 295.5</b>	<b>5 594.0</b>	<b>27</b>	<b>27</b>
Extrabudgetary	2 058.8	124.9	4	1 <sup>a</sup>

<sup>a</sup> P-2/1 associate expert post provided on non-reimbursable basis.

- 20.25 The amount of \$5,594,000 provides for: (a) the continuation of the posts, including an increase of \$100,900 due to the reclassification of one Local level post to P-2/1, and (b) related non-post requirements, reflecting an increase of \$197,600 due to increased programme activity requiring additional resources for consultants and experts (\$172,000) and travel (\$15,600). The additional provision for general temporary assistance (\$10,000) reflects the distribution among subprogrammes of the part of the provision for general temporary assistance, previously budgeted under programme support.

### Subprogramme 3 Economic development and regional cooperation during the evolution of a globalized world economy

**Resource requirements (before recosting): \$4,021,200**

- 20.26 This subprogramme is under the responsibility of the Economic Development Issues and Policies Division. The programme of work has been formulated by drawing upon subprogramme 3 of programme 18 of the medium-term plan for the period 2002-2005.

Table 20.11 **Objectives for the biennium, expected accomplishments and indicators of achievement**

**Objective:** To sustain economic development in the region, while achieving a balanced integration in the world economy.

<i>Expected accomplishments</i>	<i>Indicators of achievement</i>
(a) Increased efficiency and stability in macroeconomic management.	(a) Number of countries adopting measures to increase the efficiency and stability of macroeconomic management.
(b) An enhanced and effective contribution of the private sector to economic activity.	(b) The rate of contribution of the private sector to the gross domestic product, employment, fixed capital formation and trade.
(c) Increased awareness among member States of the challenges to their economy and the opportunities created by the new international trading and financial systems and existing and potential regional blocs.	(c) The extent of assistance provided to assist member countries in understanding the implications for their economies of the new international trading and financial systems and the formation of regional economic groupings, and increase in the number of countries acceding thereto.

### External factors

- 20.27 The subprogramme is expected to achieve its objectives and expected accomplishments on the assumption that: (a) reliable published data and information on most important economic indicators in the region will be available; and (b) member States will be willing to consider positively the recommendations of ESCWA with regard to macroeconomic issues and reform policies and to continue their drive for economic and trade liberalization.

### Outputs

- 20.28 During the biennium 2002-2003, the following outputs will be delivered:
- (a) Servicing of intergovernmental and expert bodies
    - (i) Technical Committee on Liberalization of Foreign Trade and Economic Globalization in the countries of the ESCWA region:
      - a. Substantive servicing of six meetings of the third session of the Technical Committee on Liberalization of Foreign Trade and Economic Globalization in the countries of the ESCWA region;
      - b. Parliamentary documentation: one report to the Commission on the third session of the Technical Committee on Liberalization of Foreign Trade and Economic Globalization in the countries of the ESCWA region; two summary reports to the Commission on the Survey of Economic and Social Developments in the ESCWA Region;
    - (ii) Ad hoc expert groups: three expert group meetings on: public sector management and governance; reform of the pension fund in the ESCWA region; poverty alleviation and gender implications; trade strategies and policies for ESCWA member countries acceding to the World Trade Organization;

## (b) Other substantive activities

- (i) Six recurrent publications: Survey of Economic and Social Developments in the ESCWA Region (2); economic management and institutional capacity in selected ESCWA member countries; Preliminary Overview of Economic Developments in the ESCWA Region (2); reform of economic institutions in selected ESCWA member countries;
- (ii) Twenty non-recurrent publications: A guide on electronic commerce; comparative analysis of financial liberalization in the ESCWA region; evaluation of governance in selected ESCWA countries; export competitiveness in selected ESCWA countries within the Euro-Med Agreement and WTO membership; financial market development and recycling of the ESCWA region's financial resources; financial markets and fiscal and monetary policy in selected ESCWA countries; financial markets and investment promotion in the ESCWA region; globalization and regional economic integration; international agreements and trade issues in selected ESCWA member countries; intellectual property rights; international agreements and trade issues in selected ESCWA member countries; environment; investment climate in the private sector in selected ESCWA countries; issues of immediate concern to economic diversification; microfinance: case studies in selected ESCWA member countries; public sector management and governance in selected ESCWA countries; reform of the pension funds in the ESCWA region: poverty alleviation and gender implications; strategies and policies with regard to foreign direct investment in selected ESCWA countries; substantive reports of the expert group meetings on trade strategies and policies for ESCWA member countries acceding to WTO, on the policies and reform of the pension fund and on public sector management and governance (3); trade strategies for ESCWA member countries acceding to WTO;
- (iii) Technical material (such as databases and software): database on foreign direct investment in the ESCWA region;

## (c) International cooperation

- (i) Cooperation and coordination with: the Arab Planning Institute on activities related to economic development, integration and WTO issues; the League of Arab States and its subsidiary bodies on activities related to WTO, environment and trade, trade-related aspects of intellectual property rights and foreign direct investment; the Organization of Arab Petroleum Exporting Countries in the implementation of activities on WTO and economic development issues related to oil; the Organisation for Economic Cooperation and Development on issues related to Euro-Med partnership and promotion of trade;
- (ii) Coordination with: the Department of Economic and Social Affairs on the regional survey, gender issues and other areas under economic development; the other regional commissions as relevant; the World Bank on activities related to economic development, trade, poverty and social development issues; UNCTAD in the implementation of the memorandum of understanding on cooperation in the fields of trade and economic development; UNDP on issues related to foreign direct investment and WTO; and attending UNCTAD preparatory meeting for the new WTO Agenda for negotiation.

Table 20.12 Resource requirements: subprogramme 3

Category	Resources (thousands of United States dollars)		Posts	
	2000-2001	2002-2003	2000-2001	2002-2003
		(before recosting)		
Regular budget				
Post	3 737.4	3 737.4	19	19
Non-post	275.8	283.8	-	-
<b>Total</b>	<b>4 013.2</b>	<b>4 021.2</b>	<b>19</b>	<b>19</b>
Extrabudgetary	9.2	-	-	-

- 20.29 The amount of \$4,021,200 is required for the continuation of the posts under the subprogramme and for the related non-post expenditures. The increase of \$8,000 is due to the distribution among subprogrammes of the part of the provision for general temporary assistance, previously budgeted under programme support.

#### **Subprogramme 4**

#### **Coordination of sectoral policies and harmonization of norms and standards for sustainable development within global changes**

*Resource requirements (before recosting): \$5,692,100*

- 20.30 This subprogramme is under the responsibility of the Sectoral Issues and Policies Division. The programme of work has been formulated by drawing upon subprogramme 4 of programme 18 of the medium-term plan for the period 2002-2005.

Table 20.13 **Objectives for the biennium, expected accomplishments and indicators of achievement**

**Objective:** To positively impact sustainable development through the coordination of sectoral policies and the harmonization of sectoral norms and standards within the region to achieve compatibility with international requirements, thus enhancing the competitiveness of goods and services.

<i>Expected accomplishments</i>	<i>Indicators of achievement</i>
(a) Increased availability of up-to-date information and analysis on the assessment of productivity, competitiveness, technology development and environmental compatibility in selected sectors.	(a) Timeliness of the information and analysis provided by ESCWA on the assessment of productivity and competitiveness in selected sectors, including development of new indicators.
(b) Enhanced ability of member States to tap the potential for sustainable agriculture and rural development.	(b) Number of countries adopting policies for ensuring sustainable livelihoods in rural areas.
(c) Increased acceptability and adoption by member countries of regional harmonization schemes and legal instruments proposed by ESCWA, leading to increased facilitation of physical and information transboundary flows among member States.	(c) Number of countries accepting and/or adopting harmonization schemes and/or legal instruments proposed by ESCWA during the biennium.
(d) Enhanced capacity of Governments and the private sector in member countries to formulate and implement policies for capacity-building and technological innovations in knowledge-based sectoral development.	(d) Number of countries formulating and implementing, with assistance from ESCWA, initiatives, schemes and capacity-building measures aimed at enhancing productivity, competitiveness and environmental compatibility in selected fields.
(e) Improved coverage of gender-disaggregated data and information in the regional transport database, industrial development indicators and science and technology indicators, and introduction of analysis of the role of women in one new sectoral area.	(e) (i) Number of regional transport database items, of industrial development indicators and of science and technology indicators that are gender-disaggregated; (ii) Number of policy recommendations related to improving the status of women in selected fields in the areas of technology, industry and agriculture.

### External factors

- 20.31 The subprogramme is expected to achieve its objectives and expected accomplishments on the assumption that member States will be willing to consider positively the recommendations of ESCWA regarding the harmonization of schemes and legal instruments concerning privatization, deregulation, gender mainstreaming and regional cooperation in general.

**Outputs**

20.32 During the biennium 2002-2003, the following outputs will be delivered:

- (a) Servicing of intergovernmental and expert bodies
  - (i) Committee on Transport:
    - a. Substantive servicing of four meetings of the third session of the Committee on Transport;
    - b. Parliamentary documentation: report to the Commission on the third session of the Committee on Transport;
  - (ii) Ad hoc expert groups: six expert group meetings on: capacity-building in new technologies in the ESCWA member countries; capacity-building in transport; coordination of transport policies and legal instruments; enhancing regional schemes for certification and accreditation; institution-building for the harmonization of agricultural norms and standards for major agricultural inputs; the role of small and medium-sized enterprises in enhancing the diffusion of innovative approaches in the manufacturing sector;
- (b) Other substantive activities
  - (i) Eleven recurrent publications: Directory of Research and Development Support Institutions in ESCWA member States; Information Bulletin for the Integrated Transport System in the Arab Mashreq; methodological framework for the Integrated Transport System in the Arab Mashreq; review of agriculture in ESCWA Member Countries: Agriculture and Development in Western Asia (2); review of industry in ESCWA countries (2); review of science and technology in ESCWA countries (2); review of transport in ESCWA member countries (2);
  - (ii) Nineteen non-recurrent publications: analysis of the relationship between poverty and transport in rural areas; assessment of industrial development indicators in the region in selected member countries; assessment of the management information system of two or three rural financial institutions in the ESCWA region; capacity-building in selected biotechnologies in ESCWA member countries; capacity-building in selected information and communications technologies in ESCWA member countries; directory of small and medium-sized enterprises support institutions and services; economic assessment of on-farm water use efficiency; environmentally sound technologies in a selected sector for the ESCWA member countries with emphasis on water treatment technology; indicators of science and technology development and capacity-building in the ESCWA member countries; industrial technologies foresight group: opportunities and challenges in selected member countries; knowledge-based industries, with emphasis on the application of information and communication technologies: opportunities and challenges in selected member countries; opportunities and challenges for networking and industrial clusters in selected member countries; prospects for harmonization of norms, legal instruments and regulations for selected major agricultural inputs; report on the promotion of the agreement on international roads in the Arab Mashreq; review of challenges and opportunities for agriculture in the light of the emerging trade regimes in selected ESCWA countries; industrial management systems for small and medium-sized enterprises, with emphasis on industrial environmental management needs, requirements and benefits; sustainable development and transport in the ESCWA region; technology policies for selected sectors in the ESCWA member countries; transport

facilitation on the Integrated Transport System in the Arab Mashreq through e-business and Internet/information technologies;

- (iii) Booklets, fact sheets, wall charts, information kits: two pamphlets on the methodological framework and the information system of the Integrated Transport System in the Arab Mashreq; pamphlet about the agreement on international roads in the Arab Mashreq;
  - (iv) Technical material (such as databases and software): development of the information system of the Integrated Transport System in the Arab Mashreq; four home pages on ESCWA industrial, technology, agricultural and transport activities; updating the Integrated Transport System in the Arab Mashreq Geographic Information System (GIS) map;
- (c) International cooperation
- (i) Cooperation and liaison with: the League of Arab States and its subsidiary bodies on industrial, transport and agricultural development issues; the International Organization for Standardization on certification, accreditation, technology management and training; the European Commission and its subsidiaries on transport issues; the International Road Transport Union on transport issues; the World Customs Organization on transport issues; the World Association of Industrial Technological Research Organizations in the promotion of best practices in research and development and in institutional networking;
  - (ii) Coordination, cooperation and liaison with: the Commission on Science and Technology for Development, FAO, ILO, the World Bank, UNCTAD, UNEP, UNESCO, UNIDO, UNU, other related non-governmental organizations on agricultural and rural development, standardization issues, science and technology issues, and transport issues; participation in the activities of the Administrative Committee on Coordination and its subsidiary machinery;
- (d) Technical cooperation
- (i) Advisory services for ESCWA member States in the areas of transport planning and management; agricultural issues; industrial issues; and technology policies and capacity-building;
  - (ii) Three training workshops on: capacity-building in appropriate practices by microfinance institutions to reach rural clients focusing on women and the poor; capacity-building in data and tools for policy analysis in the field of agriculture; capacity-building in on-farm water use efficiency.

Table 20.14 Resource requirements: subprogramme 4

Category	Resources (thousands of United States dollars)		Posts	
	2000-2001	2002-2003	2000-2001	2002-2003
		(before recosting)		
Regular budget				
Post	5 330.7	5 330.7	26	26
Non-post	369.1	361.4	-	-
<b>Total</b>	<b>5 699.8</b>	<b>5 692.1</b>	<b>26</b>	<b>26</b>
Extrabudgetary	57.7	-	1	-

- 20.33 The amount of \$5,692,100 is required for the continuation of the posts and for the related non-post expenditures. The decrease of \$7,700 is due to reduced requirements under travel (\$14,000) and consultants and experts (\$8,700), offset by an increase of \$15,000 under general temporary assistance, resulting from the distribution among subprogrammes of part of the provision for general temporary assistance, previously budgeted under programme support.

### **Subprogramme 5**

#### **Development, coordination and harmonization of statistics**

##### ***Resource requirements (before recosting): \$2,939,600***

- 20.34 This subprogramme is under the responsibility of the Statistics Division. The programme of work has been formulated by drawing upon subprogramme 5 of programme 18 of the medium-term plan for the period 2002-2005.

Table 20.15 **Objectives for the biennium, expected accomplishments and indicators of achievement**

**Objective:** To promote the development of statistics at the national level and coordinate them at the regional level in order to effectively meet planning, policy-making and administrative requirements for addressing emerging national and regional economic and social priorities.

<i>Expected accomplishments</i>	<i>Indicators of achievement</i>
(a) Increased capacity of member countries for production and dissemination of economic and social statistics and indicators to cover new statistical areas, such as culture, international migration, environment and energy, or new aspects of areas previously addressed, such as health, gender, trade, industry and national accounts.	(a) Number of member countries covering new statistical areas in their statistical reports and publications.
(b) Improved capacity of member countries to use technology-based databases, produced and disseminated by ESCWA, including the ESCWA Statistical Information System for new and recurrent subjects.	(b) Number of member countries receiving and using technology-based databases, produced and disseminated by ESCWA, including coverage of new areas and number of personnel trained in the usage thereof.
(c) Strengthened human and institutional capacity of ESCWA member countries in the production, analysis, dissemination and use of statistics in new areas or new aspects of areas previously addressed.	(c) Number of nationals in member countries trained in producing statistics in line with international statistics standards, as well as on the use of statistical data for analytical purposes in selected areas.
(d) Increased usage by ESCWA member countries of core social statistical indicators particular to the common country assessment framework.	(d) Number of countries producing common country assessment data and number of social indicators adopted by member countries to monitor the various aspects of human development, as well as the reports on progress achieved in following up to the recommendations of global conferences.
(e) Increased ability of member countries for improved presentation of gender-disaggregated statistical data in all statistical publications to facilitate gender analysis and increased inclusion of gender-disaggregated data in new areas.	(e) Satisfaction of member countries with data presentation in ESCWA statistical publications adjusted to facilitate gender analysis and number of new areas, including gender-disaggregated data.

### External factors

- 20.35 The subprogramme is expected to achieve its objectives and expected accomplishments on the assumption that: (a) timely, reliable and relevant national statistics on economic and social areas will be made available, especially gender-sensitive statistics; and (b) member States are fully committed to further enhancing the capacity of statistical staff on various statistical issues and packages presented by ESCWA, and to this end their full participation in training workshops conducted by ESCWA will be instrumental.

**Outputs**

20.36 During the biennium 2002-2003, the following outputs will be delivered:

- (a) Servicing of intergovernmental and expert bodies
  - (i) Statistical Committee:
    - a. Substantive servicing of six meetings of the fifth session of the Statistical Committee;
    - b. Parliamentary documentation: report to the Commission on the fifth session of the Statistical Committee;
  - (ii) Ad hoc expert groups: four expert group meetings on: compilation of environmental statistics in the transport, energy and industrial sectors; culture statistics; index numbers of economic activities and gross domestic product deflators; and vital and health statistics;
- (b) Other substantive activities
  - (i) Fourteen recurrent publications: bulletin of energy and environmental statistics; bulletin of industrial statistics; bulletin of national accounts (2); bulletin on vital statistics in ESCWA member States (2); compendium of social statistics; external trade bulletin of the ESCWA region; statistical abstract of the ESCWA region (2); statistical newsletter (4);
  - (ii) Booklets, fact sheets, wall charts, information kits: two pamphlets on the education and employment of women and men in the Arab countries;
  - (iii) Technical material: ESCWA statistics homepage; ESCWA Statistical Information System: agriculture, culture, energy, environment, gender, health and vital statistics, industry, labour force in the Arab countries, prices and financial statistics, social indicators, trade, transport, and water resources database modules (13);
- (c) International cooperation
  - (i) Cooperation, coordination and liaison with the Arab Industrial Development and Mining Organization on industrial statistics; the Statistical Committee of the Council of Arab Economic Unity; the Centre of Arab Women for Training and research and the International Development Research Center on gender statistics; cooperation with the League of Arab States and its subsidiary bodies and participation in the annual meetings of the Standing Technical Committee; the Organization of Petroleum Exporting Countries on energy, oil and gas statistics; the Statistical Economic and Social Research and Training Centre for Islamic countries; the Arabic Institute for Training and Research in Statistics;
  - (ii) Coordination with ECE on international migration statistics; ILO on labour force statistics; IMF on the 1993 System of National Accounts; UNDP on preparation of common country assessments; UNESCO on cultural statistics; UNIDO on industrial statistics; the Statistical Division of the Department of Economic and Social Affairs on capacity-building and networking among national statistical systems; participation in the annual sessions of the Subcommittee on Statistics of the Administrative Committee on Coordination;

- (d) Technical cooperation
- (i) Advisory services: backstopping of regional advisory services on strengthening national statistical systems and social and economic statistics;
- (ii) Four training workshops on: application of the 1993 System of National Accounts in the agricultural sector; gender statistics; industrial statistics; and international migration statistics.

Table 20.16 **Resource requirements: subprogramme 5**

Category	Resources (thousands of United States dollars)		Posts	
	2000-2001	2002-2003 (before recosting)	2000-2001	2002-2003
Regular budget				
Post	2 595.0	2 717.5	16	17
Non-post	231.0	222.1	-	-
<b>Total</b>	<b>2 826.6</b>	<b>2 939.6</b>	<b>16</b>	<b>17</b>
Extrabudgetary	736.5	-	4	-

- 20.37 The amount of \$2,939,600 is required for an increased number of posts and for related non-post expenditures. The increase of \$121,900 under posts is due to the establishment of a new P-3 post in the area of social statistics. The decrease of \$8,900 under non-post requirements is due to decreased requirements of \$11,300 under general temporary assistance, offset by an increase of \$2,400 under travel.

#### D. Programme support

##### **Resource requirements (before recosting): \$24,460,200**

- 20.38 Programme support comprises the Administrative Services Division and the Programme Planning and Technical Cooperation Division.

#### Outputs

- 20.39 The outputs of the Administrative Services Division include the following:
- (a) Conference and Library services: (i) provision of conference services for the policy-making organs of ESCWA and other intergovernmental meetings held under its auspices, including the preparation and coordination of official meetings; provision of interpretation, verbatim reporting, translation, editorial services; documentation and publication services; secretarial and technical support; (ii) library services, including the acquisition of publications and databases and the indexing of projects;
- (b) Human resources management: recruitment and placement; provision of staff administration and staff welfare services; training; career development and upgrading of substantive skills; staff-management relations, administration of justice; resolution of disputes and conflicts; provision of medical services and legal advice;
- (c) Administrative, budgetary and financial services: advising the Executive Secretary on all administrative, management and organizational matters; provision of guidance, coordination

and support services for programme managers in the preparation of programme budget proposals and performance reports; overall control for utilization of regular budget and extrabudgetary resources; provision of accounting services and financial disbursements, including payroll, vendors, per diem and other entitlements; coordination of the Integrated Management Information System (IMIS);

- (d) Electronic data-processing services: provision of information technology services and infrastructure and standardization of software and hardware; provision of in-house programming services for all substantive divisions in order to ensure compatibility with the existing technology and to establish a centralized control management system for the Local Area Network (LAN); enhancement of the ESCWA Internet and intranet sites;
- (e) General services: administration of the implementation of the headquarters agreement between the United Nations and the host Government; facilities management and maintenance; provision of commercial and procurement services; communications support, including satellite, radio network, telephone and fax; transportation, logistic and travel services; liaison with host country government officials; security services; protection of personnel and property; provision of postal services; maintenance of central registry and archives system; store and inventory management.

20.40 The outputs of Programme Planning and Technical Cooperation Division include the following:

- (a) Planning, monitoring and evaluation: programme planning, monitoring and evaluation of the programme of work, regular budget and extrabudgetary activities, including coordination within ESCWA and with other United Nations and non-United Nations organizations;
- (b) Management of technical cooperation activities: provision of administrative backstopping for project formulation, preparation, implementation, monitoring and evaluation; provision of advisory services for member countries, at their request, through a pool of highly qualified experts, and assistance in capacity-building through workshops/seminars; maintaining liaison with United Nations organizations, intergovernmental and non-governmental organizations and donor Governments and agencies, as well as fund-raising.

Table 20.17 **Resource requirements**

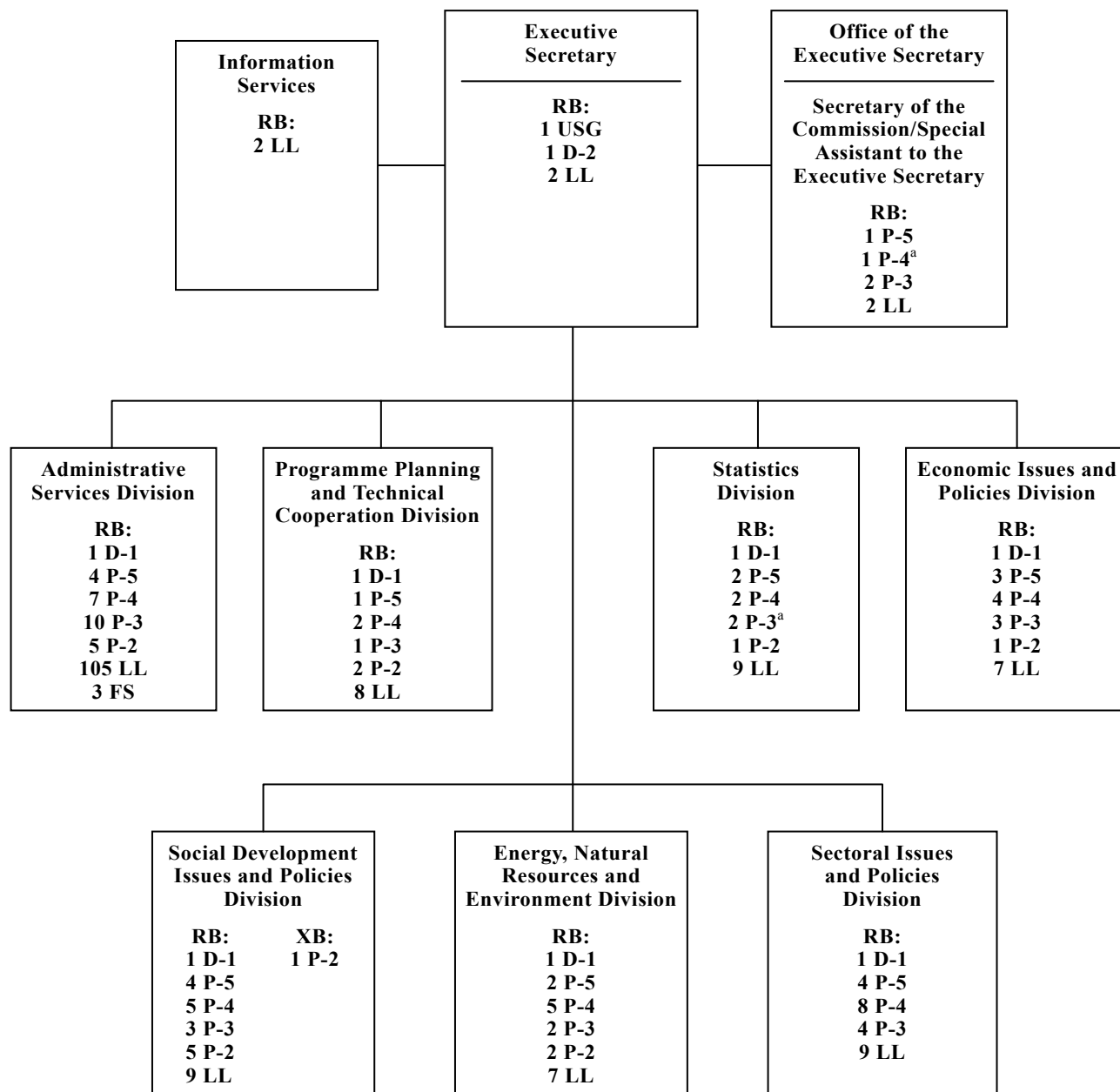
Category	Resources (thousands of United States dollars)		Posts	
	2000-2001	2002-2003 (before recosting)	2000-2001	2002-2003
Regular budget				
Post	18 201.6	17 922.6	152	150
Non-post	6 786.7	6 537.6	-	-
<b>Total</b>	<b>24 988.3</b>	<b>24 460.2</b>	<b>152</b>	<b>150</b>
Extrabudgetary	837.6	-	2	-

20.41 The amount of \$24,460,200 is required for a reduced number of posts and reduced non-post expenditures. The decrease under posts is the net result of the redeployment of two P-3 posts to the Office of the Executive Secretary and the delayed impact of two posts established in 2000-2001 to strengthen the capacity of ESCWA to implement IMIS. The decrease of \$249,100 under non-post expenditures is the net result of a number of increases and decreases under various objects of expenditure, the bulk of which reflect expenditure experience.

Table 20.18 **Summary of follow-up action taken to implement relevant recommendations of the Advisory Committee on Administrative and Budgetary Questions**

<i>Brief description of the recommendation</i>	<i>Action taken to implement the recommendation</i>
<b>Advisory Committee on Administrative and Budgetary Questions</b> (A/54/7, chap. II)	
<p>The Advisory Committee requested information on the extent to which IMIS is used by programme managers in the management of the activities under their purview (para. VIII.47).</p>	<p>In the year since the implementation of IMIS Release 3 at ESCWA, most ESCWA programme managers have utilized the IMIS inquiry and reporting facilities on a regular basis to support the monitoring and control of programme expenditures against budget allotments.</p>
<p>The Advisory Committee recommended that steps should be taken to ensure that IMIS, once installed, is adequately maintained in all regional commissions (para. V.12).</p>	<p>While primary responsibility for IMIS maintenance lies with the IMIS support team of the Information Technology Services Division, several steps have been taken within ESCWA to ensure adequate future maintenance of IMIS:</p> <p>(a) Two posts (one P-4 and one Local level) have been established specifically to support IMIS operations at ESCWA. IMIS data integrity is as important as the maintenance of the underlying functional software. To ensure the continued quality of IMIS data, steps have been taken or are being planned in order to strengthen the ESCWA IMIS Help Desk capability; streamline security procedures; improve the availability of IMIS training, especially for the substantive divisions; and provide feedback reports on the quality of IMIS data maintenance and required remedial action.</p> <p>(b) Infrastructure: provisions have been made by the Electronic Data-Processing Unit to ensure that the required technical infrastructure is in place to fully support IMIS operational requirements for the foreseeable future.</p>

**Economic and Social Commission for Western Asia  
Organizational structure and post distribution for the  
biennium 2002-2003**



<sup>a</sup> New posts.

## Annex

## Indicative resource requirements Economic and social development in Western Asia

Table A.20.1 Requirements by component and source of funds

(Thousands of United States dollars)

(1) *Regular budget*

Component	1998-1999 expenditure	2000-2001 appropri- ation	Resource growth		Total before recosting	Recosting	2002-2003 estimate
			Amount	Percentage			
Policy-making organs	75.8	109.8	-	-	109.8	3.3	113.1
Executive direction and management	2 373.5	1 700.8	606.7	35.6	2 307.5	73.5	2 381.0
Programme of work	18 172.5	21 782.5	422.2	1.9	22 204.7	725.5	22 930.2
Programme support	21 351.8	24 988.3	(528.1)	(2.1)	24 460.2	785.0	25 245.2
<b>Total</b>	<b>41 973.6</b>	<b>48 581.4</b>	<b>500.8</b>	<b>1.0</b>	<b>49 082.2</b>	<b>1 587.3</b>	<b>50 669.5</b>

(2) *Extrabudgetary*

	1998-1999 expenditure	2000-2001 estimate	Source of funds	2002-2003 estimate
	-	-	(a) Services in support of:	-
	-	-	(i) United Nations organizations	-
	-	-	(ii) Extrabudgetary activities	-
	-	-	(b) Substantive activities	-
	-	-	(c) Operational projects	-
	1 594.8	1 508.0	UNDP	-
	1 100.2	1 008.7	UNFPA	124.9
	2.9	4.8	UNESCO	-
	2.3	-	UNICEF	-
	9.7	9.5	World Bank	-
	11.5	-	ILO	-
	44.9	-	UNIFEM	-
	374.9	229.2	ESCWA Trust Fund	-
	647.2	970.8	Multilateral sources	-
	34.8	-	Bilateral sources	-
<b>Total</b>	<b>3 823.2</b>	<b>3 731.0</b>		<b>124.9</b>
<b>Total (1) and (2)</b>	<b>45 796.8</b>	<b>52 312.4</b>		<b>50 794.4</b>

Table A.20.2 **Requirements by object of expenditure**

(Thousands of United States dollars)

(1) *Regular budget*

<i>Object of expenditure</i>	<i>1998-1999 expenditure</i>	<i>2000-2001 appropri- ation</i>	<i>Resource growth</i>		<i>Total before recosting</i>	<i>Recosting</i>	<i>2002-2003 estimate</i>
			<i>Amount</i>	<i>Percentage</i>			
Posts	34 517.4	40 176.2	542.0	1.3	40 718.2	1 322.4	42 040.6
Other staff costs	929.3	829.1	-	-	829.1	25.0	854.1
Consultants and experts	1 001.6	1 153.0	183.3	15.8	1 336.3	40.3	1 376.6
Travel of staff	432.1	478.9	6.5	1.3	485.4	26.9	512.3
Contractual services	672.2	901.6	(9.7)	(1.0)	891.9	26.9	918.8
General operating expenses	2 833.1	3 487.9	(269.6)	(7.7)	3 218.3	97.4	3 315.7
Hospitality	17.4	18.3	-	-	18.3	0.6	18.9
Supplies and materials	647.7	777.9	-	-	777.9	23.4	801.3
Furniture and equipment	922.8	758.5	48.3	6.3	806.8	24.4	831.2
<b>Total</b>	<b>41 973.6</b>	<b>48 581.4</b>	<b>500.8</b>	<b>1.0</b>	<b>49 082.2</b>	<b>1 587.3</b>	<b>50 669.5</b>

(2) *Extrabudgetary*

<i>Object of expenditure</i>	<i>1998-1999 expenditure</i>	<i>2000-2001 estimate</i>	<i>2002-2003 estimate</i>
Posts	1 514.3	1 156.2	-
Other staff costs	639.8	415.5	19.6
Consultants and experts	575.1	671.6	15.0
Travel of staff	258.3	259.9	9.0
Contractual services	234.0	399.2	5.0
General operating expenses	63.5	78.1	4.0
Supplies and materials	18.3	9.0	-
Furniture and equipment	11.9	13.9	-
Fellowships, grants and contributions	464.3	620.5	70.5
Other	43.4	107.1	1.8
<b>Total</b>	<b>3 822.9</b>	<b>3 731.0</b>	<b>124.9</b>
<b>Total (1) and (2)</b>	<b>45 796.5</b>	<b>52 312.4</b>	<b>50 794.4</b>

Table A.20.3 Post requirements

Category	Established regular budget posts		Temporary posts				Total		
	2000-2001	2002-2003	Regular budget		Extrabudgetary		2000-2001	2002-2003	
			2000-2001	2002-2003	2000-2001	2002-2003			
<b>Professional and above</b>									
USG	1	1	-	-	-	-	1	1	
D-2	1	1	-	-	-	-	1	1	
D-1	7	7	-	-	-	-	7	7	
P-5	21	21	-	-	2	-	23	21	
P-4/3	58	61	1	-	-	-	59	61	
P-2/1	15	16	-	-	2	1	17	17	
<b>Subtotal</b>	<b>103</b>	<b>107</b>	<b>1</b>	<b>-</b>	<b>4</b>	<b>1</b>	<b>108</b>	<b>108</b>	
<b>Other</b>									
Local level	160	160	1	-	7	-	168	160	
Field service	3	3	-	-	-	-	3	3	
<b>Subtotal</b>	<b>163</b>	<b>163</b>	<b>1</b>	<b>-</b>	<b>7</b>	<b>-</b>	<b>171</b>	<b>163</b>	
<b>Total</b>	<b>266</b>	<b>270</b>	<b>2</b>	<b>-</b>	<b>11</b>	<b>1<sup>a</sup></b>	<b>279</b>	<b>271</b>	

<sup>a</sup> P-2/1 associate expert post provided on non-reimbursable basis.

### Policy-making organs

Table A.20.4 Requirements by object of expenditure

(Thousands of United States dollars)

#### Regular budget

Object of expenditure	1998-1999 expenditure	2000-2001 appropriation	Resource growth		Total before recosting	Recosting	2002-2003 estimate
			Amount	Percentage			
Other staff costs	75.8	109.8	-	-	109.8	3.3	113.1
<b>Total</b>	<b>75.8</b>	<b>109.8</b>	<b>-</b>	<b>-</b>	<b>109.8</b>	<b>3.3</b>	<b>113.1</b>

### Resource requirements

#### Other staff costs

- A.20.1 A provision of \$109,800, at the maintenance level, is required to service the twenty-second session of the Commission and the thirteenth session of its Preparatory Committee as well as its six subsidiary committees by providing interpretation, translation, administrative, secretarial and other relevant services.

## Executive direction and management

Table A.20.5 **Requirements by object of expenditure and source of funds**

(Thousands of United States dollars)

(1) *Regular budget*

Object of expenditure	1998-1999 expenditure	2000-2001 appropri- ation	Resource growth		Total before recosting	Recosting	2002-2003 estimate
			Amount	Percentage			
Posts	2 212.7	1 565.7	598.2	38.2	2 163.9	66.5	2 230.4
Other staff costs	-	-	2.0	-	2.0	-	2.0
Consultants and experts	39.5	25.8	-	-	25.8	0.7	26.5
Travel of staff	121.3	109.3	6.5	5.9	115.8	6.3	122.1
<b>Total</b>	<b>2 373.5</b>	<b>1 700.8</b>	<b>606.7</b>	<b>35.6</b>	<b>2 307.5</b>	<b>73.5</b>	<b>2 381.0</b>

(2) *Extrabudgetary*

	1998-1999 expenditure	2000-2001 estimate	Source of funds	2002-2003 estimate
			(a) Services in support of:	
	-	-	(i) United Nations organizations	-
	-	-	(ii) Extrabudgetary activities	-
	-	-	(b) Substantive activities	-
			(c) Operational projects	
	4.6	-	ESCWA Trust Fund	-
<b>Total</b>	<b>4.6</b>	<b>-</b>		<b>-</b>
<b>Total (1) and (2)</b>	<b>2 378.1</b>	<b>1 700.8</b>		<b>2 381.0</b>

Table A.20.6 **Post requirements**

Category	Established regular budget posts		Temporary posts				Total	
	2000- 2001	2002- 2003	Regular budget		Extrabudgetary		2000- 2001	2002- 2003
			2000- 2001	2002- 2003	2000- 2001	2002- 2003		
<b>Professional and above</b>								
USG	1	1	-	-	-	-	1	1
D-2	1	1	-	-	-	-	1	1
P-5	1	1	-	-	-	-	1	1
P-4/3	-	3	-	-	-	-	-	3
<b>Subtotal</b>	<b>3</b>	<b>6</b>	<b>-</b>	<b>-</b>	<b>-</b>	<b>-</b>	<b>3</b>	<b>6</b>
<b>General Service</b>								
Local level	6	6	-	-	-	-	6	6
<b>Subtotal</b>	<b>6</b>	<b>6</b>	<b>-</b>	<b>-</b>	<b>-</b>	<b>-</b>	<b>6</b>	<b>6</b>
<b>Total</b>	<b>9</b>	<b>12</b>	<b>-</b>	<b>-</b>	<b>-</b>	<b>-</b>	<b>9</b>	<b>12</b>

**Resource requirements (before recosting)**

*Posts*

A.20.2 The amount of \$2,163,900, reflecting an increase of \$598,200, provides for the staffing requirements as indicated in table A.20.6. The increase of \$598,200 results from the establishment of a new P-4 post of Chief of Protocol/Coordination (\$146,600) and the inward redeployment of two P-3 posts from programme support (\$451,600) in order to strengthen the Office of the Executive Secretary. The provision of these additional posts will strengthen the functions of the Office of the Executive Secretary in overseeing, coordinating and consolidating activities under the programme of work, ensuring the implementation of policy recommendations and improving coordination with member States and other organizations.

*Other staff costs*

A.20.3 A new provision of \$2,000 resulting from the distribution of the part of the total provision for general temporary assistance, previously budgeted under programme support, is required to provide assistance during peak periods for work that does not fall within the purview of the substantive divisions.

*Consultants and experts*

A.20.4 The requirements of \$25,800, at the maintenance level covers specialized expertise in areas that do not fall under the mandates of the substantive divisions, as may be requested by the Commission or at the initiative of the Executive Secretary.

*Travel of staff*

A.20.5 The requirement of \$115,800, reflecting an increase of \$6,500, provides for the travel of the Executive Secretary, the Deputy Executive Secretary and their immediate staff for consultations with Governments and specialized agencies, to attend meetings within and outside the ESCWA region, including meetings of the executive secretaries of the regional commissions and intergovernmental meetings, as well as consultations at Headquarters. The increase of \$6,500 relates to the additional travel requirements of new staff of the Office of the Executive Secretary.

**Programme of work**

Table A.20.7 **Percentage distribution of resources by subprogramme**

<i>Subprogramme</i>	<i>Regular budget</i>	<i>Extrabudgetary</i>
1. Management of water, energy and the environment for sustainable development	17.8	-
2. Promoting social change for sustainable development	25.2	100.0
3. Economic development and regional cooperation during the evolution of a globalized world economy	18.1	-
4. Coordination of sectoral policies and harmonization of norms and standards for sustainable development within global changes	25.7	-
5. Development, coordination and harmonization of statistics	13.2	-
<b>Total</b>	<b>100.0</b>	<b>100.0</b>

Table A.20.8 Requirements by subprogramme

(Thousands of United States dollars)

*Regular budget*

<i>Subprogramme</i>	<i>1998-1999 expenditure</i>	<i>2000-2001 appropri- ation</i>	<i>Resource growth</i>		<i>Total before recosting</i>	<i>Recosting</i>	<i>2002-2003 estimate</i>
			<i>Amount</i>	<i>Percentage</i>			
1. Management of water, energy and the environment for sustainable development	2 929.1	3 947.4	10.4	0.2	3 957.8	131.1	4 088.9
2. Promoting social change for sustainable development	4 629.7	5 295.5	298.5	5.6	5 594.0	186.1	5 780.1
3. Economic development and regional cooperation during the evolution of a globalized world economy	3 367.5	4 013.2	8.0	0.1	4 021.2	130.8	4 152.0
4. Coordination of sectoral policies and harmonization of norms and standards for sustainable development within global changes	4 951.3	5 699.8	(7.7)	(0.1)	5 692.1	181.4	5 873.5
5. Development coordination and harmonization of statistics	2 294.9	2 826.6	113.0	3.9	2 939.6	96.1	3 035.7
<b>Total</b>	<b>18 172.5</b>	<b>21 782.5</b>	<b>422.2</b>	<b>1.9</b>	<b>22 204.7</b>	<b>725.5</b>	<b>22 930.2</b>

Table A.20.9 **Requirements by object of expenditure and source of funds**

(Thousands of United States dollars)

(1) *Regular budget*

Object of expenditure	1998-1999 expenditure	2000-2001 appropri- ation	Resource growth		Total before recosting	Recosting	2002-2003 estimate
			Amount	Percentage			
Posts	17 034.6	20 408.9	222.8	1.0	20 631.7	670.5	21 302.2
Other staff costs	-	27.1	32.1	118.4	59.2	1.9	61.1
Consultants and experts	886.8	1 062.1	163.3	15.3	1 225.4	37.1	1 262.5
Travel of staff	251.1	284.4	4.0	1.4	288.4	16.0	304.4
<b>Total</b>	<b>18 172.5</b>	<b>21 782.5</b>	<b>422.2</b>	<b>1.9</b>	<b>22 204.7</b>	<b>725.5</b>	<b>22 930.2</b>

(2) *Extrabudgetary*

	1998-1999 expenditure	2000-2001 estimate	Source of funds	2002-2003 estimate
			(a) Services in support of:	
	-	-	(i) United Nations organizations	-
	-	-	(ii) Extrabudgetary activities	-
	-	-	(b) Substantive activities	-
			(c) Operational projects	
	876.7	1 075.9	UNDP	-
	1 100.2	1 008.7	UNFPA	124.9
	2.9	4.8	UNESCO	-
	2.3	-	UNICEF	-
	9.7	9.5	World Bank	-
	11.5	-	ILO	-
	44.9	-	UNIFEM	-
	10.0	25.1	ESCWA Trust Fund	-
	454.3	769.4	Multilateral sources	-
	34.8	-	Bilateral sources	-
<b>Total</b>	<b>2 547.3</b>	<b>2 893.4</b>		<b>124.9</b>
<b>Total (1) and (2)</b>	<b>20 719.8</b>	<b>24 675.9</b>		<b>23 055.1</b>

Table A.20.10 Post requirements

Category	Established regular budget posts		Temporary posts				Total	
			Regular budget		Extrabudgetary			
	2000-2001	2002-2003	2000-2001	2002-2003	2000-2001	2002-2003	2000-2001	2002-2003
<b>Professional and above</b>								
D-1	5	5	-	-	-	-	5	5
P-5	15	15	-	-	2	-	17	15
P-4/3	37	38	-	-	-	-	37	38
P-2/1	8	9	-	-	2	1	10	10
<b>Subtotal</b>	<b>65</b>	<b>67</b>	<b>-</b>	<b>-</b>	<b>4</b>	<b>1</b>	<b>69</b>	<b>68</b>
<b>General Service</b>								
Local level	42	41	-	-	5	-	47	41
<b>Subtotal</b>	<b>42</b>	<b>41</b>	<b>-</b>	<b>-</b>	<b>5</b>	<b>-</b>	<b>47</b>	<b>41</b>
<b>Total</b>	<b>107</b>	<b>108</b>	<b>-</b>	<b>-</b>	<b>9</b>	<b>1<sup>a</sup></b>	<b>116</b>	<b>109</b>

<sup>a</sup> P-2/1 associate experts post provided on non-reimbursable basis.

### Subprogramme 1 Management of water, energy and the environment for sustainable development

Table A.20.11 Requirements by object of expenditure and source of funds

(Thousands of United States dollars)

#### (1) Regular budget

Object of expenditure	1998-1999 expenditure	2000-2001 appropriation	Resource growth		Total before recosting	Recosting	2002-2003 estimate
			Amount	Percentage			
Posts	2 702.8	3 657.3	-	-	3 657.3	120.3	3 777.6
Other staff costs	-	-	10.4	-	10.4	0.4	10.8
Consultants and experts	174.5	230.4	-	-	230.4	7.0	237.4
Travel of staff	51.8	59.7	-	-	59.7	3.4	63.1
<b>Total</b>	<b>2 929.1</b>	<b>3 947.4</b>	<b>10.4</b>	<b>0.2</b>	<b>3 957.8</b>	<b>131.1</b>	<b>4 088.9</b>

(2) *Extrabudgetary*

	<i>1998-1999 expenditure</i>	<i>2000-2001 estimate</i>	<i>Source of funds</i>	<i>2002-2003 estimate</i>
			(a) Services in support of:	
	-	-	(i) United Nations organizations	-
	-	-	(ii) Extrabudgetary activities	-
	-	-	(b) Substantive activities	-
			(c) Operational projects	
	31.5	26.0	UNDP	-
	10.0	-	ESCWA Trust Fund	-
	1.7	5.5	Multilateral sources	-
	23.0	-	Bilateral sources	-
<b>Total</b>	<b>66.2</b>	<b>31.5</b>		<b>-</b>
<b>Total (1) and (2)</b>	<b>2 995.3</b>	<b>3 978.9</b>		<b>4 088.9</b>

Table A.20.12 **Post requirements**

<i>Category</i>	<i>Established regular budget posts</i>		<i>Temporary posts</i>				<i>Total</i>	
	<i>2000- 2001</i>	<i>2002- 2003</i>	<i>Regular budget</i>		<i>Extrabudgetary</i>		<i>2000- 2001</i>	<i>2002- 2003</i>
			<i>2000- 2001</i>	<i>2002- 2003</i>	<i>2000- 2001</i>	<i>2002- 2003</i>		
<b>Professional and above</b>								
D-1	1	1	-	-	-	-	1	1
P-5	2	2	-	-	-	-	2	2
P-4/3	7	7	-	-	-	-	7	7
P-2/1	2	2	-	-	-	-	2	2
<b>Subtotal</b>	<b>12</b>	<b>12</b>	<b>-</b>	<b>-</b>	<b>-</b>	<b>-</b>	<b>12</b>	<b>12</b>
<b>General Service</b>								
Local level	7	7	-	-	-	-	7	7
<b>Subtotal</b>	<b>7</b>	<b>7</b>	<b>-</b>	<b>-</b>	<b>-</b>	<b>-</b>	<b>7</b>	<b>7</b>
<b>Total</b>	<b>19</b>	<b>19</b>	<b>-</b>	<b>-</b>	<b>-</b>	<b>-</b>	<b>19</b>	<b>19</b>

**Resource requirements (before recosting)***Posts*

- A.20.6 The amount of \$3,657,300 provides for the continuation of the established posts as indicated in table A.20.12.

*Other staff costs*

- A.20.7 A new provision of \$10,400 resulting from the distribution of the part of the total provision for general temporary assistance, previously budgeted under programme support, is required to cover the replacement of staff on extended sick leave and maternity leave, as well as additional assistance to be provided in preparation for intergovernmental and ad hoc expert group meetings and workshops as well as secretarial assistance in the preparation of the subprogramme's publications.

*Consultants and experts*

- A.20.8 The requirement of \$230,400, at the maintenance level, covers the costs of: (a) consultants (\$104,600) to provide specialized expertise in the areas of efficient use of energy, water supply and demand management, including sustainability and efficiency of water allocation, desalination, drought management, water quality and shared groundwater resources, and in the promotion of and participation in environmental decision-making and the preservation of a clean environment; and (b) the four expert group meetings listed in paragraph 20.20 (a) (iii) (\$125,800).

*Travel of staff*

- A.20.9 The requirement of \$59,700, at the maintenance level, provides for participation of staff in official meetings dealing with issues of relevance to the subprogramme and for consultations with officials of the countries of the region and with regional and intergovernmental organizations active in the fields of natural resources and environment.

## Subprogramme 2

### Promoting social change for sustainable development

Table A.20.13 **Requirements by object of expenditure and source of funds**

(Thousands of United States dollars)

(1) *Regular budget*

<i>Object of expenditure</i>	<i>1998-1999 expenditure</i>	<i>2000-2001 appropriation</i>	<i>Resource growth</i>		<i>Total before recosting</i>	<i>Recosting</i>	<i>2002-2003 estimate</i>
			<i>Amount</i>	<i>Percentage</i>			
Posts	4 349.0	5 087.9	100.9	1.9	5 188.8	171.6	5 360.4
Other staff costs	-	-	10.0	-	10.0	0.4	10.4
Consultants and experts	206.9	136.0	172.0	126.4	308.0	9.3	317.3
Travel of staff	73.8	71.6	15.6	21.7	87.2	4.8	92.0
<b>Total</b>	<b>4 629.7</b>	<b>5 295.5</b>	<b>298.5</b>	<b>5.6</b>	<b>5 594.0</b>	<b>186.1</b>	<b>5 780.1</b>

(2) *Extrabudgetary*

	<i>1998-1999 expenditure</i>	<i>2000-2001 estimate</i>	<i>Source of funds</i>	<i>2002-2003 estimate</i>
			(a) Services in support of:	
	-	-	(i) United Nations organizations	-
	-	-	(ii) Extrabudgetary activities	-
	-	-	(b) Substantive activities	-
			(c) Operational projects	
	255.1	563.9	UNDP	-
	1 090.2	1 008.7	UNFPA	124.9
	2.9	4.8	UNESCO	-
	11.5	-	ILO	-
	33.3	-	UNIFEM	-
	159.6	481.1	Multilateral sources	-
<b>Total</b>	<b>1 552.6</b>	<b>2 058.5</b>		<b>124.9</b>
<b>Total (1) and (2)</b>	<b>6 182.3</b>	<b>7 354.0</b>		<b>5 905.0</b>

Table A.20.14 Post requirements

Category	Established regular budget posts		Temporary posts				Total	
			Regular budget		Extrabudgetary			
	2000-2001	2002-2003	2000-2001	2002-2003	2000-2001	2002-2003	2000-2001	2002-2003
<b>Professional and above</b>								
D-1	1	1	-	-	-	-	1	1
P-5	4	4	-	-	1	-	5	4
P-4/3	8	8	-	-	-	-	8	8
P-2/1	4	5	-	-	1	1	5	6
<b>Subtotal</b>	<b>17</b>	<b>18</b>	<b>-</b>	<b>-</b>	<b>2</b>	<b>1</b>	<b>19</b>	<b>19</b>
<b>General Service</b>								
Local level	10	9	-	-	2	-	12	9
<b>Subtotal</b>	<b>10</b>	<b>9</b>	<b>-</b>	<b>-</b>	<b>2</b>	<b>-</b>	<b>12</b>	<b>9</b>
<b>Total</b>	<b>27</b>	<b>27</b>	<b>-</b>	<b>-</b>	<b>4</b>	<b>1<sup>a</sup></b>	<b>31</b>	<b>28</b>

<sup>a</sup> P-2/1 associate experts post provided on non-reimbursable basis.

### Resource requirements (before recosting)

#### Posts

- A.20.10 The amount of \$5,188,800 reflecting an increase of \$100,900, provides for the posts as indicated in table A.20.14. The increase of \$100,900 relates to the reclassification of a Local level post to P-2/1, resulting from the additional functions assigned to the post in 2000-2001.

#### Other staff costs

- A.20.11 A new provision of \$10,000, resulting from the distribution of the part of the total provision for general temporary assistance, previously budgeted under programme support, is required to cover the replacement of staff on extended sick leave and maternity leave, as well as additional assistance to be provided in preparation for intergovernmental and ad hoc expert group meetings, and to assist in the development and maintenance of the Population Policies Information System home page.

#### Consultants and experts

- A.20.12 The requirement of \$308,000, reflecting an increase of \$172,000, relates to (a) consultants (\$146,200) to provide specialized expertise for the preparation of two reports to be submitted to the Economic and Social Council, and a number of publications/studies, such as one on the Regional Information System on Social Policies, the regional human development report, governance, housing, urbanization, gender, the girl child and follow-up on the implementation of United Nations global conferences; and (b) the five expert group meetings listed in paragraph 20.24 (a) (iii) (\$161,800). The increases of \$46,800 for consultants and \$125,200 for expert groups results from additional activities, including the preparation of four reports and three expert group meetings.

*Travel of staff*

- A.20.13 The requirement of \$87,200, reflecting an increase of \$15,600, provides for the participation of staff in meetings of other United Nations bodies and regional institutions on issues relevant to the programme of work, for consultations with Governments and for the preparation of studies and reports.

### Subprogramme 3

#### Economic development and regional cooperation during the evolution of a globalized world economy

Table A.20.15 **Requirements by object of expenditure and source of funds**

(Thousands of United States dollars)

(1) *Regular budget*

<i>Object of expenditure</i>	<i>1998-1999 expenditure</i>	<i>2000-2001 appropriation</i>	<i>Resource growth</i>		<i>Total before recosting</i>	<i>Recosting</i>	<i>2002-2003 estimate</i>
			<i>Amount</i>	<i>Percentage</i>			
Posts	3 205.4	3 737.4	-	-	3 737.4	121.2	3 858.6
Other staff costs	-	-	8.0	-	8.0	0.2	8.2
Consultants and experts	127.6	231.3	-	-	231.3	7.0	238.3
Travel of staff	34.5	44.5	-	-	44.5	2.4	46.9
<b>Total</b>	<b>3 367.5</b>	<b>4 013.2</b>	<b>8.0</b>	<b>0.2</b>	<b>4 021.2</b>	<b>130.8</b>	<b>4 152.0</b>

(2) *Extrabudgetary*

	<i>1998-1999 expenditure</i>	<i>2000-2001 estimate</i>	<i>Source of funds</i>	<i>2002-2003 estimate</i>
			(a) Services in support of:	
	-	-	(i) United Nations organizations	-
	-	-	(ii) Extrabudgetary activities	-
	-	-	(b) Substantive activities	-
			(c) Operational projects	-
	-	9.2	Multilateral sources	-
	4.9	-	Bilateral sources	-
<b>Total</b>	<b>4.9</b>	<b>9.2</b>		<b>-</b>
<b>Total (1) and (2)</b>	<b>3 372.4</b>	<b>4 022.4</b>		<b>4 152.0</b>

Table A.20.16 Post requirements

Category	Established regular budget posts		Temporary posts				Total	
			Regular budget		Extrabudgetary			
	2000-2001	2002-2003	2000-2001	2002-2003	2000-2001	2002-2003	2000-2001	2002-2003
<b>Professional and above</b>								
D-1	1	1	-	-	-	-	1	1
P-5	3	3	-	-	-	-	3	3
P-4/3	7	7	-	-	-	-	7	7
P-2/1	1	1	-	-	-	-	1	1
<b>Subtotal</b>	<b>12</b>	<b>12</b>	<b>-</b>	<b>-</b>	<b>-</b>	<b>-</b>	<b>12</b>	<b>12</b>
<b>General Service</b>								
Local level	7	7	-	-	-	-	7	7
<b>Subtotal</b>	<b>7</b>	<b>7</b>	<b>-</b>	<b>-</b>	<b>-</b>	<b>-</b>	<b>7</b>	<b>7</b>
<b>Total</b>	<b>19</b>	<b>19</b>	<b>-</b>	<b>-</b>	<b>-</b>	<b>-</b>	<b>19</b>	<b>19</b>

**Resource requirements (before recosting)***Posts*

- A.20.14 The amount of \$3,737,400 provides for the continuation of the established posts as indicated in table A.20.16.

*Other staff costs*

- A.20.15 A new provision of \$8,000, resulting from the distribution of part of the total provision for general temporary assistance, previously budgeted under programme support, is required to cover the replacement of staff on extended sick leave and maternity leave, as well as additional assistance to be provided in preparation for intergovernmental and ad hoc expert group meetings, and secretarial assistance for the preparation of the subprogramme's publications.

*Consultants and experts*

- A.20.16 The requirement of \$231,300, at the maintenance level, relates to the cost of: (a) consultants (\$151,200) to provide specialized expertise in the preparation of reports and publications, such as the reform of the pension fund; trade strategies and policies for ESCWA member countries acceding to WTO; the two issues of part II of the Survey of Economic and Social Developments in the ESCWA region; financial markets; international agreements; microfinance; and a report and database on foreign direct investment; and (b) the three expert group meetings listed above in paragraph 20.28 (a) (ii) (\$80,100).

*Travel of staff*

- A.20.17 The requirement of \$44,500, at the maintenance level, provides for the participation of staff in meetings of other United Nations bodies and regional institutions on issues relevant to the programme of work, including other regional commissions and UNCTAD (\$11,400) and for consultations with Governments and the preparation of studies and reports (\$33,100).

### Subprogramme 4

## Coordination of sectoral policies and harmonization of norms and standards for sustainable development within global changes

Table A.20.17 **Requirements by object of expenditure and source of funds**

(Thousands of United States dollars)

(1) *Regular budget*

<i>Object of expenditure</i>	<i>1998-1999 expenditure</i>	<i>2000-2001 appropriation</i>	<i>Resource growth</i>		<i>Total before recosting</i>	<i>Recosting</i>	<i>2002-2003 estimate</i>
			<i>Amount</i>	<i>Percentage</i>			
Posts	4 628.7	5 330.7	-	-	5 330.7	169.1	5 499.8
Other staff costs	-	-	15.0	-	15.0	0.4	15.4
Consultants and experts	252.6	299.6	(8.7)	(2.9)	290.9	8.8	299.7
Travel of staff	70.0	69.5	(14.0)	(20.1)	55.5	3.1	58.6
<b>Total</b>	<b>4 951.3</b>	<b>5 699.8</b>	<b>(7.7)</b>	<b>(0.1)</b>	<b>5 692.1</b>	<b>181.4</b>	<b>5 873.5</b>

(2) *Extrabudgetary*

	<i>1998-1999 expenditure</i>	<i>2000-2001 estimate</i>	<i>Source of funds</i>	<i>2002-2003 estimate</i>
			(a) Services in support of:	
	-	-	(i) United Nations organizations	-
	-	-	(ii) Extrabudgetary activities	-
	-	-	(b) Substantive activities	-
			(c) Operational projects	
	11.6	-	UNIFEM	-
	-	25.1	ESCWA Trust Fund	-
	53.9	32.6	Multilateral sources	-
<b>Total</b>	<b>65.5</b>	<b>57.7</b>		<b>-</b>
<b>Total (1) and (2)</b>	<b>5 016.8</b>	<b>5 757.5</b>		<b>5 873.5</b>

Table A.20.18 Post requirements

Category	Established regular budget posts		Temporary posts				Total	
			Regular budget		Extrabudgetary			
	2000-2001	2002-2003	2000-2001	2002-2003	2000-2001	2002-2003	2000-2001	2002-2003
<b>Professional and above</b>								
D-1	1	1	-	-	-	-	1	1
P-5	4	4	-	-	-	-	4	4
P-4/3	12	12	-	-	-	-	12	12
P-2/1	-	-	-	-	1 <sup>a</sup>	-	1	-
<b>Subtotal</b>	<b>17</b>	<b>17</b>	<b>-</b>	<b>-</b>	<b>1</b>	<b>-</b>	<b>18</b>	<b>17</b>
<b>General Service</b>								
Local level	9	9	-	-	-	-	9	9
<b>Subtotal</b>	<b>9</b>	<b>9</b>	<b>-</b>	<b>-</b>	<b>-</b>	<b>-</b>	<b>9</b>	<b>9</b>
<b>Total</b>	<b>26</b>	<b>26</b>	<b>-</b>	<b>-</b>	<b>1</b>	<b>-</b>	<b>27</b>	<b>26</b>

<sup>a</sup> P-2/1 associate expert post provided on non-reimbursable basis.

### Resource requirements (before recosting)

#### Posts

- A.20.18 The amount of \$5,330,700 provides for the continuation of the established posts as indicated in table A.20.18.

#### Other staff costs

- A.20.19 A new provision of \$15,000, resulting from the distribution of part of the total provision for general temporary assistance, previously budgeted under programme support, is required to cover the replacement of staff on extended sick leave and maternity leave, as well as additional assistance in the preparation of publications/reports/studies.

#### Consultants and experts

- A.20.20 The requirement of \$290,900, reflecting a decrease of \$8,700 covers the cost of: (a) consultants (\$103,500) to provide specialized expertise in the areas of certification and accreditation; innovative approaches in the manufacturing sector; capacity-building in new technologies; transport policies and legal instruments; and agricultural norms and standards for major agricultural inputs; as well as in the preparation of a number of publications/studies and databases in the fields of industry, science and technology, transport and agriculture; and (b) the six expert group meetings listed in paragraph 20.32 (a) (ii) (\$187,400). The decrease of \$8,700 relates to reduced requirements under expert group meetings.

#### Travel of staff

- A.20.21 The requirement of \$55,500, reflecting a decrease of \$14,000, provides for the participation of staff in the annual meetings of directors responsible for transport in the regional commissions and the meeting organized by UNIDO on knowledge-based industries and for consultations with

Governments and intergovernmental organizations and coordination with the specialized agencies and other United Nations offices and departments.

## Subprogramme 5 Development, coordination and harmonization of statistics

Table A.20.19 **Requirements by object of expenditure and source of funds**

(Thousands of United States dollars)

### (1) *Regular budget*

<i>Object of expenditure</i>	<i>1998-1999 expenditure</i>	<i>2000-2001 appropri- ation</i>	<i>Resource growth</i>		<i>Total before recosting</i>	<i>Recosting</i>	<i>2002-2003 estimate</i>
			<i>Amount</i>	<i>Percentage</i>			
Posts	2 148.7	2 595.6	121.9	4.6	2 717.5	88.3	2 805.8
Other staff costs	-	27.1	(11.3)	(41.6)	15.8	0.5	16.3
Consultants and experts	125.2	164.8	-	-	164.8	5.0	169.8
Travel of staff	21.0	39.1	2.4	6.1	41.5	2.3	43.8
<b>Total</b>	<b>2 294.9</b>	<b>2 826.6</b>	<b>113.0</b>	<b>3.9</b>	<b>2 939.6</b>	<b>96.1</b>	<b>3 035.7</b>

### (2) *Extrabudgetary*

	<i>1998-1999 expenditure</i>	<i>2000-2001 estimate</i>	<i>Source of funds</i>	<i>2002-2003 estimate</i>
	-	-	(a) Services in support of:	-
	-	-	(i) United Nations organizations	-
	-	-	(ii) Extrabudgetary activities	-
	-	-	(b) Substantive activities	-
	-	-	(c) Operational projects	-
	590.1	486.0	UNDP	-
	10.0	-	UNFPA	-
	2.3	-	UNICEF	-
	9.7	9.5	World Bank	-
	239.1	241.0	Multilateral sources	-
	6.9	-	Bilateral sources	-
<b>Total</b>	<b>858.1</b>	<b>736.5</b>		<b>-</b>
<b>Total (1) and (2)</b>	<b>3 153.0</b>	<b>3 563.1</b>		<b>3 035.7</b>

Table A.20.20 Post requirements

Category	Established regular budget posts		Temporary posts				Total	
			Regular budget		Extrabudgetary			
	2000-2001	2002-2003	2000-2001	2002-2003	2000-2001	2002-2003	2000-2001	2002-2003
<b>Professional and above</b>								
D-1	1	1	-	-	-	-	1	1
P-5	2	2	-	-	1	-	3	2
P-4/3	3	4	-	-	-	-	3	4
P-2/1	1	1	-	-	-	-	1	1
<b>Subtotal</b>	<b>7</b>	<b>8</b>	<b>-</b>	<b>-</b>	<b>1</b>	<b>-</b>	<b>8</b>	<b>8</b>
<b>General Service</b>								
Local level	9	9	-	-	3	-	12	9
<b>Subtotal</b>	<b>9</b>	<b>9</b>	<b>-</b>	<b>-</b>	<b>3</b>	<b>-</b>	<b>12</b>	<b>9</b>
<b>Total</b>	<b>16</b>	<b>17</b>	<b>-</b>	<b>-</b>	<b>4</b>	<b>-</b>	<b>20</b>	<b>17</b>

**Resource requirements (before recosting)***Posts*

- A.20.22 The amount of \$2,717,500, reflecting an increase of \$121,900, provides for the posts as indicated in table A.20.20. The increase of \$121,900 relates to the establishment of a new P-3 post in the field of social statistics to address new statistical areas, such as international migration, culture and health.

*Other staff costs*

- A.20.23 A provision of \$15,800 under general temporary assistance, reflecting a decrease of \$11,300, is required to cover the replacement of staff on extended sick leave and maternity leave, as well as additional assistance in preparation for intergovernmental and ad hoc expert group meetings and the publications within the subprogramme. The decrease of \$11,300 relates to reduced requirements for additional assistance under social statistics.

*Consultants and experts*

- A.20.24 The requirement of \$164,800, at the maintenance level, covers the cost of (a) consultants (\$27,100), to provide specialized expertise in the fields of vital and health statistics, culture statistics, gross domestic product deflators and index numbers for economic activities, environmental statistics, international migration statistics, industrial statistics and gender statistics, and on the link between agriculture and the 1993 System of National Accounts, as well as in the preparation of a number of publications/studies and the ESCWA Statistical Information System; and (b) the four expert group meetings listed in paragraph 20.36 (a) (ii) (\$137,700).

*Travel of staff*

- A.20.25 The requirement of \$41,500, reflecting an increase of \$2,400, provides for the participation of staff in meetings with organizations active in the field of statistics within or outside the United Nations system and for consultations with government officials and coordination with the specialized

agencies and United Nations offices and departments, including other regional commissions. The increase of \$2,400 under other official travel of staff results from additional requirements relating to social statistics.

### Programme support

Table A.20.21 **Requirements by object of expenditure and source of funds**

(Thousands of United States dollars)

#### (1) *Regular budget*

<i>Object of expenditure</i>	<i>1998-1999 expenditure</i>	<i>2000-2001 appropriation</i>	<i>Resource growth</i>		<i>Total before recosting</i>	<i>Recosting</i>	<i>2002-2003 estimate</i>
			<i>Amount</i>	<i>Percentage</i>			
Posts	15 270.1	18 201.6	(279.0)	(1.5)	17 922.6	585.4	18 508.0
Other staff costs	853.5	692.2	(34.1)	(4.9)	658.1	19.8	677.9
Consultants and experts	75.3	65.1	20.0	30.7	85.1	2.5	87.6
Travel of staff	59.7	85.2	(4.0)	(4.6)	81.2	4.6	85.8
Contractual services	672.2	901.6	(9.7)	(1.0)	891.9	26.9	918.8
General operating expenses	2 833.1	3 487.9	(269.6)	(7.7)	3 218.3	97.4	3 315.7
Hospitality	17.4	18.3	-	-	18.3	0.6	18.9
Supplies and materials	647.7	777.9	-	-	777.9	23.4	801.3
Furniture and equipment	922.8	758.5	48.3	6.3	806.8	24.4	831.2
<b>Total</b>	<b>21 351.8</b>	<b>24 988.3</b>	<b>(528.1)</b>	<b>(2.1)</b>	<b>24 460.2</b>	<b>785.0</b>	<b>25 245.2</b>

#### (2) *Extrabudgetary*

	<i>1998-1999 expenditure</i>	<i>2000-2001 estimate</i>	<i>Source of funds</i>	<i>2002-2003 estimate</i>
			(a) Services in support of:	
	-	-	(i) United Nations organizations	-
	-	-	(ii) Extrabudgetary activities	-
	-	-	(b) Substantive activities	-
			(c) Operational projects	
	718.1	432.1	UNDP	-
	360.3	204.1	ESCWA Trust Fund	-
	192.9	201.4	Multilateral sources	-
<b>Total</b>	<b>1 271.3</b>	<b>837.6</b>		<b>-</b>
<b>Total (1) and (2)</b>	<b>22 623.1</b>	<b>25 825.9</b>		<b>25 245.2</b>

Table A.20.22 Post requirements

Category	Established regular budget posts		Temporary posts				Total	
			Regular budget		Extrabudgetary			
	2000-2001	2002-2003	2000-2001	2002-2003	2000-2001	2002-2003	2000-2001	2002-2003
<b>Professional and above</b>								
D-1	2	2	-	-	-	-	2	2
P-5	5	5	-	-	-	-	5	5
P-4/3	21	20	1	-	-	-	22	20
P-2/1	7	7	-	-	-	-	7	7
<b>Subtotal</b>	<b>35</b>	<b>34</b>	<b>1</b>	<b>-</b>	<b>-</b>	<b>-</b>	<b>36</b>	<b>34</b>
<b>General Service</b>								
Local level	112	113	1	-	2	-	115	113
Field service	3	3	-	-	-	-	3	3
<b>Subtotal</b>	<b>115</b>	<b>116</b>	<b>1</b>	<b>-</b>	<b>2</b>	<b>-</b>	<b>118</b>	<b>116</b>
<b>Total</b>	<b>150</b>	<b>150</b>	<b>2</b>	<b>-</b>	<b>2</b>	<b>-</b>	<b>154</b>	<b>150</b>

**Resource requirements (before recosting)***Posts*

- A.20.26 The amount of \$17,922,600, reflecting a decrease of \$279,000, provides for the posts shown in table A.20.22. The decrease of \$279,000 reflects the net result of: (a) the reduction of \$451,600 due to outward redeployment of two P-3 posts to the Office of the Executive Secretary and (b) the increase of \$172,600 due to the delayed impact of the establishment of two IMIS-related posts (one P-4 and one Local level) in 2000-2001.

*Other staff costs*

- A.20.27 A provision of \$658,100, reflecting a decrease of \$34,100, is required as follows: (a) \$76,400 for general temporary assistance to cover the replacement of staff on extended sick and maternity leave and additional assistance during peak workload periods; (b) \$127,700 for overtime during peak periods of work; and (c) \$454,000 to provide full round-the-clock contractual security coverage of the building and parking areas in Beirut. The decrease of \$34,100 is due to the distribution among subprogrammes of the part of provision for general temporary assistance, previously budgeted under programme support.

*Consultants and experts*

- A.20.28 An amount of \$85,100, reflecting an increase of \$20,000, covers the cost of specialized medical and legal expertise, as well as consultancy fees relating to the improvement of electromechanical equipment and systems in the building and security coverage and equipment; and to the cost of external evaluation of ESCWA activities. The increase of \$20,000 relates to the external evaluation exercise for ESCWA activities.

*Travel of staff*

- A.20.29 The requirement of \$81,200, reflecting a decrease of \$4,000, provides for travel of staff for consultations on administrative, personnel, budget and finance and security matters as well as the

management of technical cooperation. The decrease of \$4,000 reflects a reduction in actual requirements due to the increased use of electronic means of communication.

*Contractual services*

- A.20.30 A provision of \$891,900, reflecting a decrease of \$9,700, is required as follows: (a) \$35,000 for training of security officers in substantive skills development; (b) \$102,000 for part-time language teachers; (c) \$90,000 for external editing, translation, printing and binding of a number of publications; (d) \$182,200 for electronic data-processing services; and (e) \$482,700 for the contracted services of telephone operators, messengers and related support functions. The decrease of \$9,700 is the net result of decreased requirements for part-time language teachers (\$15,900); contractual editing/translation (\$38,300) and data-processing services (\$95,900) and increased requirements for substantive skills development training (\$35,000) and for outsourcing support services (\$105,400).

*General operating expenses*

- A.20.31 A provision of \$3,218,300, reflecting a decrease of \$269,600, is required as follows: (a) \$1,058,500, reflecting a decrease of \$56,000, for maintenance of premises and rental of space for radio repeater antennas and equipment; (b) \$816,900, reflecting a decrease of \$155,500, for utilities (electricity, water, fuel, oil for boiler and standby generators); (c) \$16,000, reflecting a decrease of \$196,700, for rental and maintenance of furniture; (d) \$911,900, including a resource growth of \$59,700, for communications, including telephone, fax, postage and pouches; (e) \$245,100, reflecting a resource growth of \$62,700, for maintenance of office automation equipment, photocopiers, reproduction and other equipment; and (f) \$169,900, reflecting a resource growth of \$16,200, for miscellaneous services to cover freight and related costs (clearance) and general insurance.

*Hospitality*

- A.20.32 A provision of \$18,300, at the maintenance level, is required to cover the cost of official functions in connection with meetings of policy-making organs.

*Supplies and materials*

- A.20.33 A provision of \$777,900, at the maintenance level, is required for office supplies, photocopy paper, materials for electronic data-processing and internal printing, library books, subscriptions and supplies.

*Furniture and equipment*

- A.20.34 A provision of \$806,800, reflecting an increase of \$48,300, is required as follows: (a) \$270,900, including a decrease of \$114,000, for acquisition and replacement of office furniture, transportation and communication equipment; and (b) \$535,900, reflecting an increase of \$162,300, for acquisition and replacement of office automation and data-processing equipment. The decrease of \$114,300 under (a) reflects actual inventory requirements. The increase of \$162,300 under (b) is due to the purchase of software user licenses for web and LAN servers (\$60,500), and to the need for upgrade/replacement of low-end or obsolete equipment (\$101,800).