



Designing Cities for Children and Families

Brenna Hassinger-Das, Ph.D.

Assistant Professor, Pace University

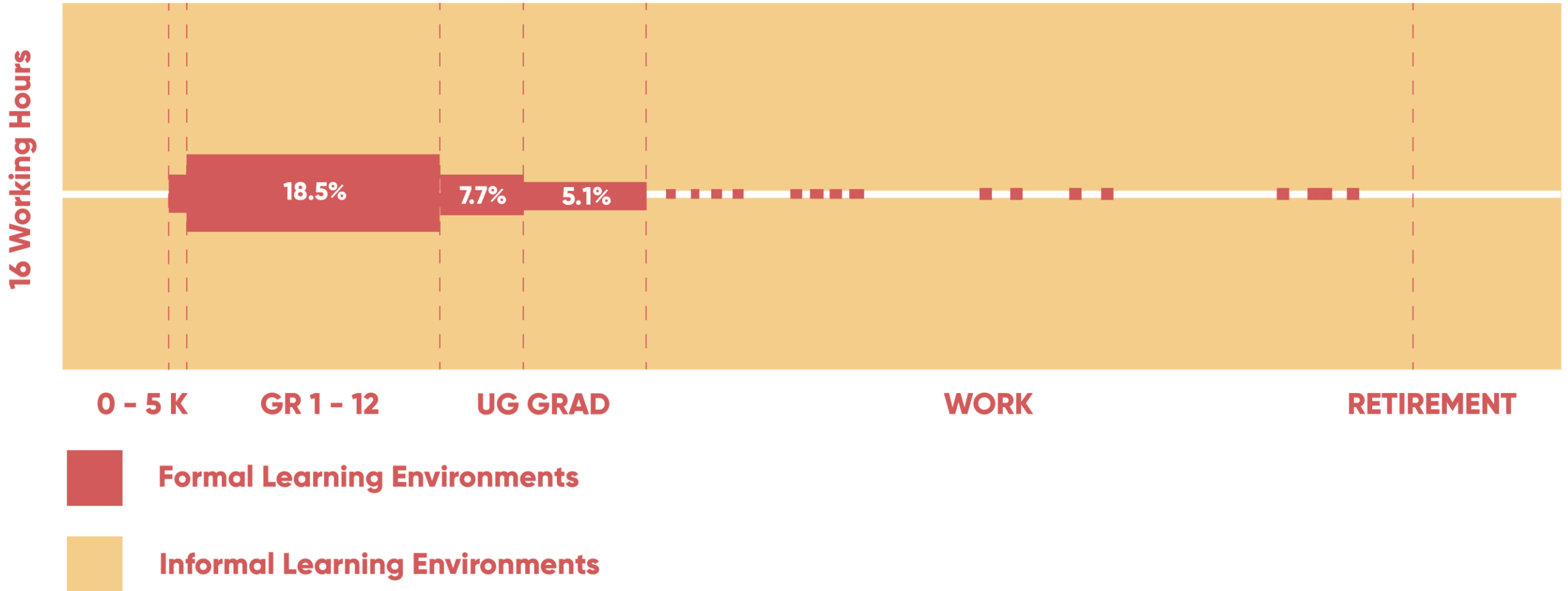
Science Advisor, PLLAN

 @playfullerng

www.playfulllearninglandscapes.fun



Where are children?



Why Design Cities for Children and Families?

- Environment affects health, well-being, physical and cognitive development (GDCI, 2020)
- SDG 11 – Make cities inclusive, safe, resilient, and sustainable
- Importance of social interaction and joint engagement
- Need for places to pause and stay (GDCI, 2020)







Playful learning

Free play

child-led

Guided play

child-led, adult scaffolded

Games

Adult designed/scaffolded
Set rules and constraints for play

Direct Instruction

Adult designed/controlled
Set constraints for activity

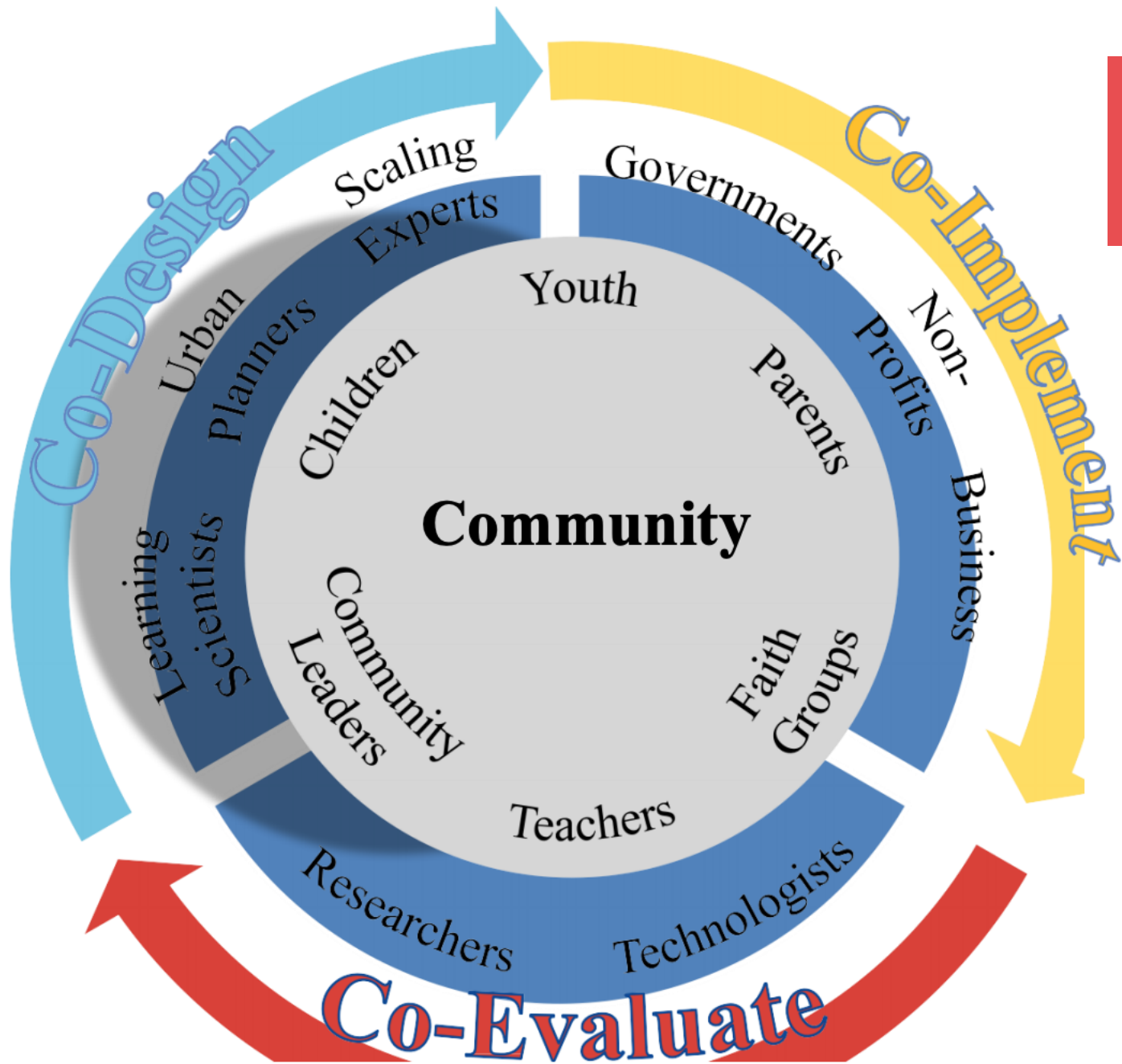


Balance of child-adult involvement and constraints



Design Principles for Playful Learning

1. Robust community engagement benefits everyone
 2. Spark interaction between children and caregivers
 3. Identify learning goals
 4. Iterative process leads to better outcomes
- 





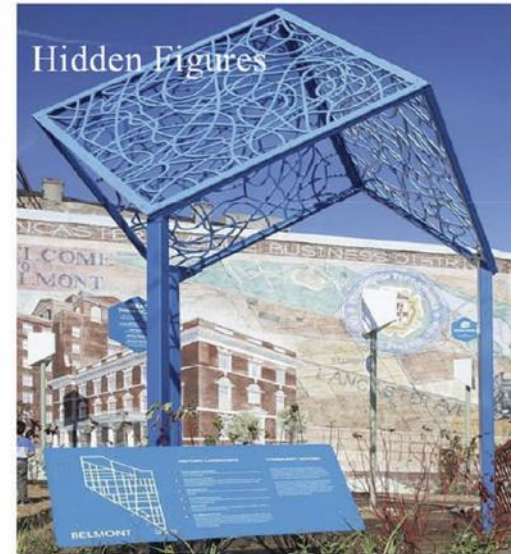
Case Study

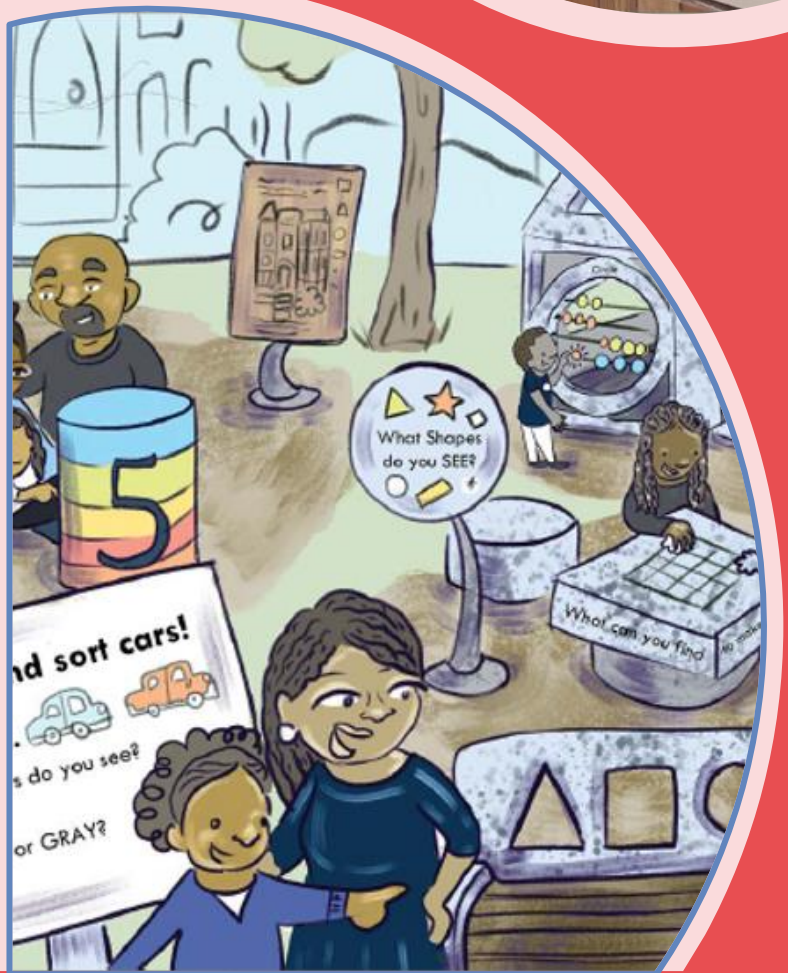
Urban Thinkscape

Belmont bus stop | Philadelphia, PA

Targeting everyday spaces: Urban Thinkscape

- ↑ verbal engagement
- ↑ caregiver-child interaction
- ↑ language (overall)
- ↑ language (STEM)





Chicago, São Paulo, and beyond...

PLAYFUL Learning

LANDSCAPES
ACTION NETWORK

Who we are

A nonprofit that brings together educators, learning scientists, community organizers, and architects to create playful learning spaces

What we do

Coaching and Design Review

Technical Assistance and Design

Training & Webinars

Science Dissemination

