



**Promoting the Active
Participation of People
Living in Extreme Poverty
in the Design and
Implementation of
Programmes and Policies**

*Rasha Natour,
Senior Advocacy Manager*

Rasha.Natour@bracusa.org





In the late 1990s, BRAC recognized a salient gap in the ability of our microfinance services to reach the poorest.

Who are the poorest?

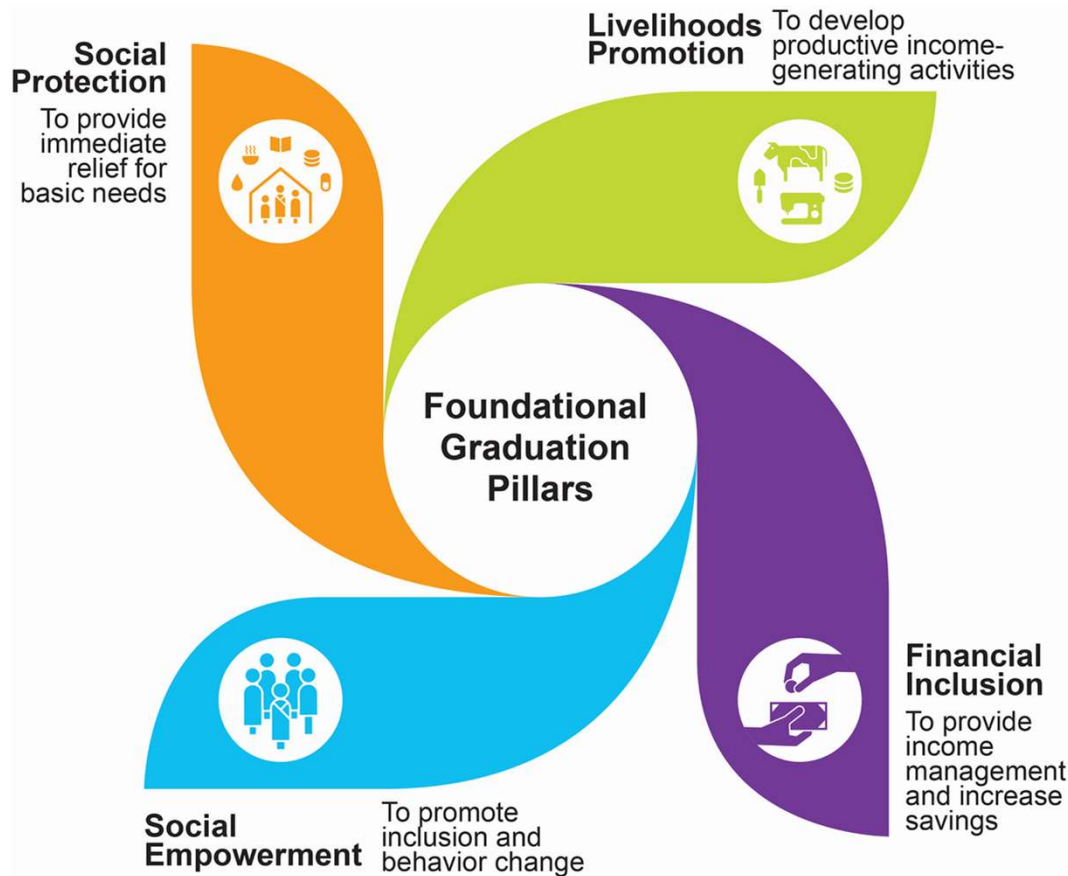
- Classified as **extreme** or **ultra poor**
- Per-capita **income below \$1.90 USD/day**
- **Food insecure** despite spending 80%+ income on food and nutrition
- **Disconnected** from government services, community resources, and markets
- Live in **isolated and hard-to-reach** areas
- Predominantly **female-headed** families





As a result, BRAC adopted a new lens attuned to the specific needs and vulnerabilities of the poorest - the Graduation approach.

What is the Graduation Approach?



A combination of **comprehensive, multi-dimensional and sequenced** interventions that create a **'big push'** to propel the extreme poor from poverty.

Graduation is one of the most effective interventions to address extreme poverty, and is **proven to break the poverty trap for the long term.**

Participants in Bangladesh have steady upward mobility after **7+ years**:

9x

increase in
savings

2x

increase in
land access

37%

increase in
annual income

10%

increase in
consumption

**Work
Productivity**
increased

**Household
Assets**
accumulated

**Economic
Inequality**
reduced

**Gender
Equality**
enhanced

Scalable and Proven Solution to Extreme Poverty



Among most effective and sustainable development interventions

BRAC's has graduated over 2 million households out of extreme poverty in Bangladesh alone. The 'big push' for escaping extreme poverty without falling back into it later builds resilience.



Contributes to long-term gains

Continued upward mobility years after the official program ends with an increase in income, savings, and consumption, and more.

“ What idea is bigger than the idea that the poorest of the poor have enough talent to be self-sufficient? That if you give them a push, they'll stay up. ”

-Abhijit Banerjee | 2019 Nobel Memorial Prize in Economics Lecture



Adaptive to:

Meet unique needs of marginalized groups, including women, youth, elderly, differently-abled and refugees/IDPs.

Address needs in various operating contexts, including rural, urban and climate- conflict-, displacement-affected contexts.



Supports Response, Recovery, and Resilience for the extreme poor



Proven to be replicable and scalable globally

Nearly 100 Graduation programs exist in over 40 countries.

Achieving the SDGs by 2030

Graduation addresses multiple drivers of exclusion and deprivation to ensure **no one is left behind**



SUSTAINABLE DEVELOPMENT GOALS

<p>1 NO POVERTY</p>	<p>Graduation scaled within national social protection programs aim to end extreme poverty by 2030.</p>
<p>2 ZERO HUNGER</p>	<p>Productive Asset Transfer and Technical Training to promote sustainable livelihoods and access to food.</p>
<p>3 GOOD HEALTH AND WELL-BEING</p>	<p>Life-Skills Training and Access to Health Services encourages behavior change and builds resilience against sudden health-related shocks.</p>
<p>5 GENDER EQUALITY</p>	<p>Savings, Mentoring and Social-Inclusive Activities to promote gender equality and empowerment.</p>
<p>8 DECENT WORK AND ECONOMIC GROWTH</p>	<p>Cross-Sectoral Linkages to increase the productivity of the extreme poor, contributing to economic growth.</p>
<p>10 REDUCED INEQUALITIES</p>	<p>Multidimensional Targeting and Graduation Criteria to progressively realize basic rights for the extreme poor.</p>
<p>17 PARTNERSHIPS FOR THE GOALS</p>	<p>South-South partnerships to increase global Graduation program implementation and visibility.</p>

UPGI Strategic Vision: 2021-2026

BRAC UPGI IMPACT

By 2026, 21 million people will be lifted out of ultra-poverty through BRAC UPGI's work with key government actors and implementing partners in selected countries to enable the adoption and scale-up of Graduation by governments.

Key Strategies

Shape global and regional dialogue to influence action

Work in key countries to support government adoption

Support a strong, sustainable civil society

Main Approaches

Advocate for **policy change at the global, regional, and national level** to ensure policies and programs meet the needs of the ultra-poor

Technical assistance and capacity building to ensure effective graduation programming that reaches the ultra-poor

Targeted communications for education, **awareness raising and mobilization**

Learning and innovation to **influence and promote effective implementation and inform policy recommendations**

Current focus:

- Identifying and pursuing partnerships for scaling at the global, regional, and national level
 - Sharing evidence and learning to influence global, regional, and national policies and programs to ensure they adequately and sustainably address extreme poverty
 - Conducting country landscape analysis to inform a comprehensive country engagement strategy, which will include:
 - thorough program and policy landscaping
 - civil society mapping
 - interviews and consultations with key stakeholders in-country
 - validation process and ongoing partnerships with key stakeholders
-

bracultrapoorgraduation.org
[ultrapoorgraduation@brac-
upgi.org](mailto:ultrapoorgraduation@brac-upgi.org)

