



United Nations
Office of Internal Oversight Services
INVESTIGATIONS DIVISION

MONTHLY PERFORMANCE INDICATORS
AS OF 31 JANUARY 2012

CHART 1a: Caseload of ongoing investigations at the end of each month

ID cases under investigation	31 January 2012			31 December 2011			30 November 2011		
	TOTAL cases	PKO cases	PKO percentage	TOTAL cases	PKO cases	PKO percentage	TOTAL cases	PKO cases	PKO percentage
caseload carried over	280	148	53%	285	147	52%	233	147	63%
incoming matters during current month	62	38	61%	40	28	70%	96	23	24%
predicated for investigation ^{a/}	16	11	69%	8	7	88%	63	9	14%
cases closed	19	13	68%	13	6	46%	11	9	82%
TOTAL open cases under investigation	277	146	53%	280	148	53%	285	147	52%

CHART 1b: Ongoing investigations by category as of 31 January 2012

Category	TOTAL cases	percentage of TOTAL cases	PKO cases	PKO percentage
Financial	106	38%	26	18%
Inventory/Assets	11	4%	5	3%
Management	8	3%	4	3%
Personnel ^{b/}	66	24%	49	34%
Procurement	35	13%	13	9%
Programmatic	1	0.4%	-	0%
Sexual Exploitation and Abuse (SEA)	48	17%	48	33%
Sexual Harassment	2	1%	1	1%
OPEN investigations	277	100%	146	53%

^{a/} Matters are considered received when they are first reviewed by the Investigation Intake Committee.

^{b/} Personnel category includes misconduct by staff members, which does not fall into the other identified categories.

Matters received as of 31 January 2012

8,701 matters were received from 1 January 1994 through 31 January 2012

(34 matters (121%) more than in January 2011)

CHART 2a: Total of matters received during each calendar year

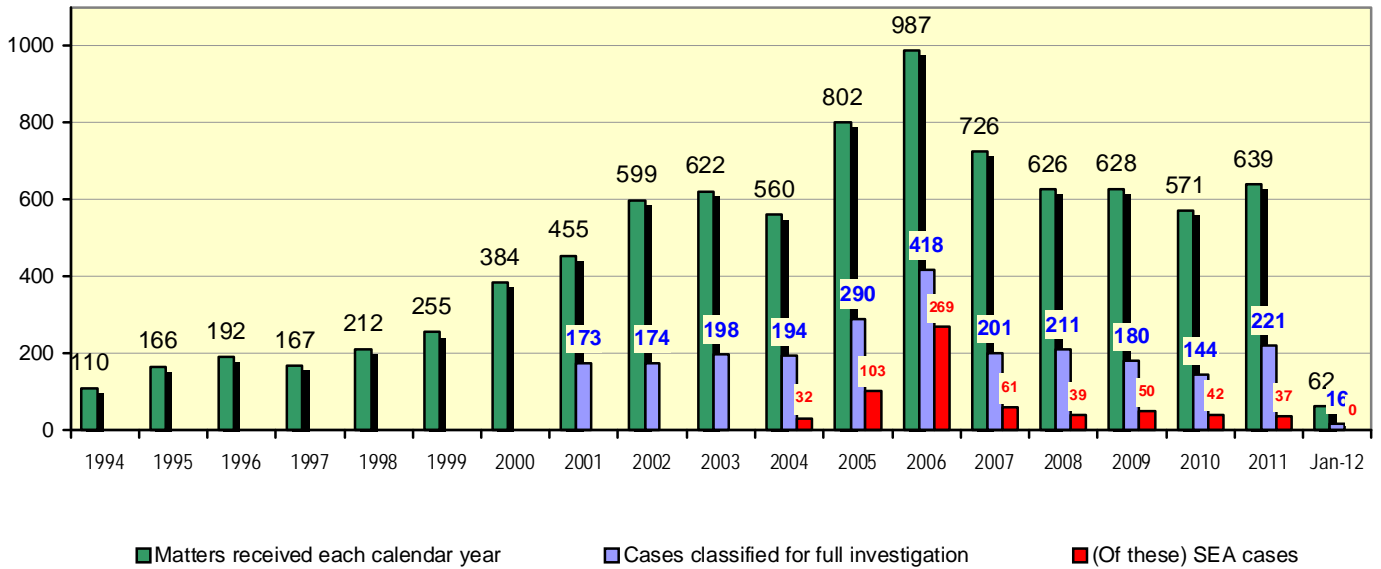


CHART 2b: Monthly cumulative amount of matters received

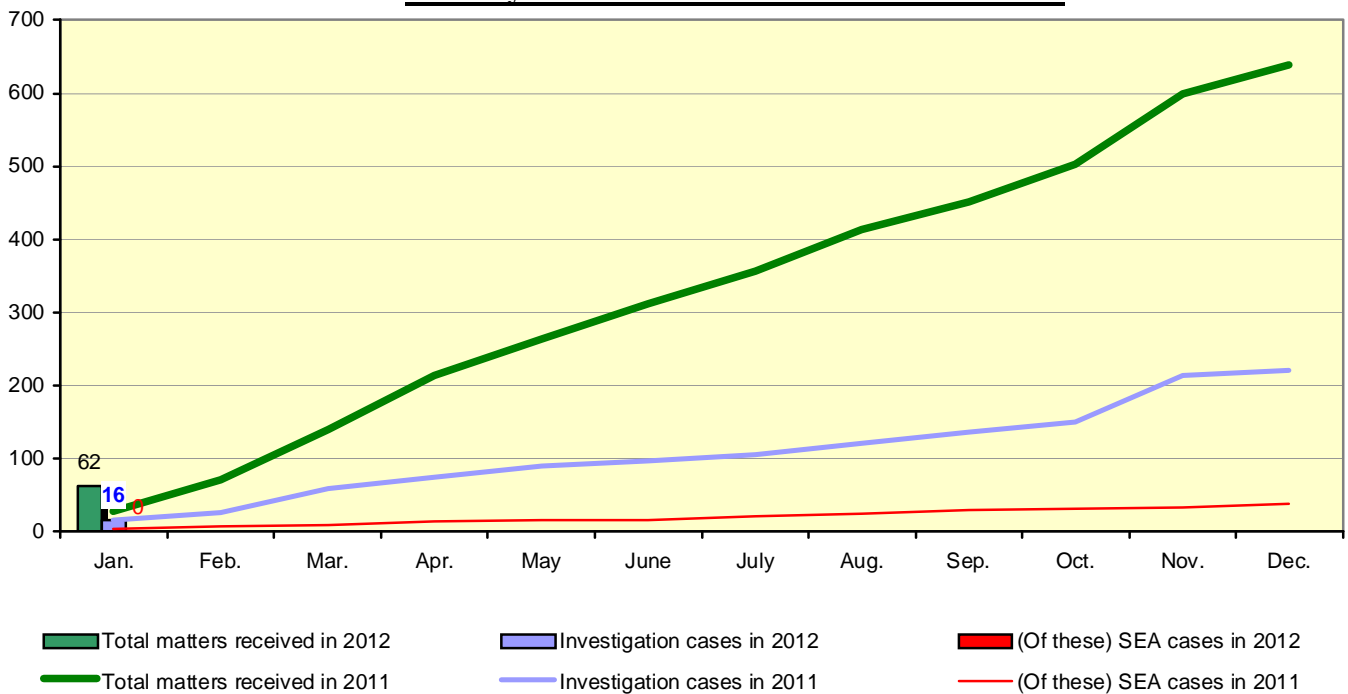


CHART 3a: **SEA cases under investigation as of 31 January 2012**

Mission/Office	open SEA cases	percentage of total open SEA
MINUSTAH	2	4%
MONUSCO	28	58%
UNMIL	8	17%
UNMISS	7	15%
UNOCI	3	6%
TOTAL	48	100%

CHART 3b: **Aging of above SEA cases**

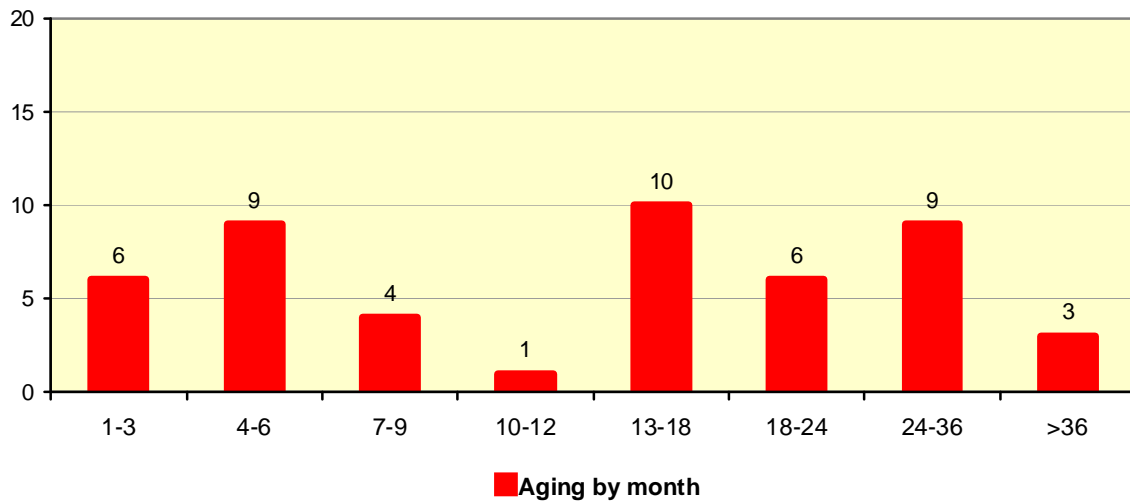
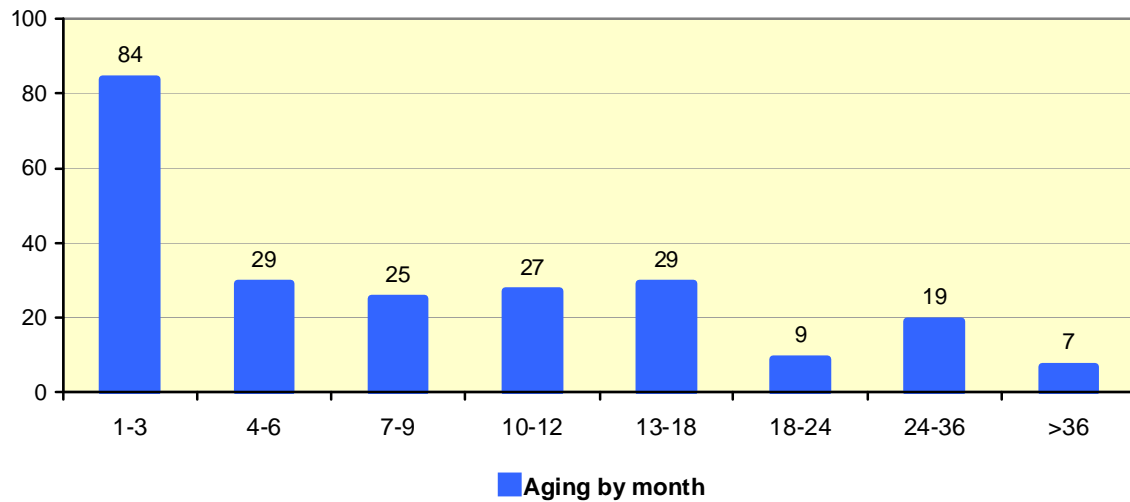


CHART 3c: **Aging of other cases**



- End of Monthly Performance Indicators -