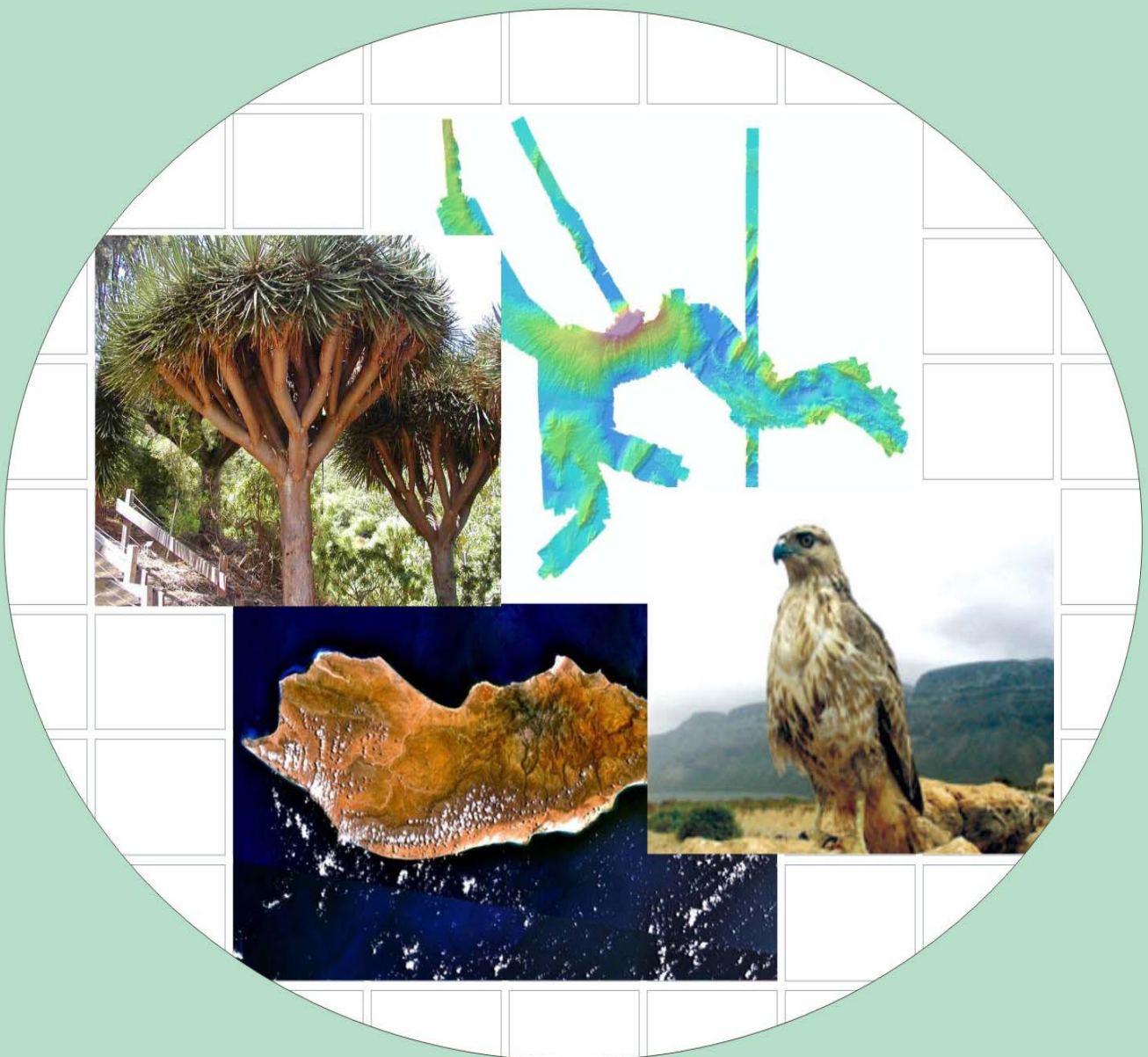


**Submission to the
Commission on the Limits of the Continental Shelf
pursuant to Article 76, paragraph 8
of the
United Nations Convention on the Law of the Sea 1982
in respect of
South East of Socotra Island**



Republic of Yemen

Executive Summary - Amended

TABLE OF CONTENTS

1 Introduction	2
2 Provisions of Article 76 invoked.....	2
3 Names of any Commission members who provided advice during the preparation of the submission.....	2
4 Absence of disputes	2
5 State bodies responsible for the preparation of the submission	2
6 Amended submission.....	2
7 Advisors to the Government of the Republic of Yemen	2
8 Detailed description of the outer limit of the continental shelf south east of Socotra Island.....	3

LIST OF FIGURES

Figure 1 Outer limit of the continental shelf south east of Socotra Island ...	3
--	---

APPENDIX

Appendix 1: List of coordinates defining the outer limit of the continental shelf south east of Socotra Island.....	5
---	---

1. Introduction

This submission to the Commission on the Limits of the Continental Shelf is made by the Republic of Yemen pursuant to Article 76, paragraph 8 of the Convention in support of the establishment of the outer limit of the continental shelf.

This submission represents a single and full case to be made by the Republic of Yemen to the Commission on the Limits of the Continental Shelf in respect of continental shelf area beyond 200M from the base lines from which the breadth of the territorial sea is measured.

The submission deals with the outer limit of the continental shelf appurtenant to the Republic of Yemen in the area south east of Socotra Island.

2. Provisions of Article 76 invoked

The outer limits contained in this submission are based on the provisions of Article 76.4 (a)(ii), 76.4 (b), 76.7.

3. Names of any Commission members who provided advice during the preparation of the submission

No advice was provided by any member of the Commission.

4. Absence of disputes

In accordance with paragraph 2(a) of Annex 1 to the Commission's Rules of Procedure, the Republic of Yemen wishes to inform the Commission that the area of continental shelf that is the subject of this submission is not the subject of any dispute between them and any other state.

5. State bodies responsible for the preparation of the Submission

This submission, together with all maps, figures, enclosures, appendices and digital databases was prepared by the Ministry of Transport, Yemen Geological Survey & Mineral Resources Board, Sanaa University, Yemen Remote Sensing Centre and the Oil Exploration and Production Board.

6. Amended submission

This submission contains a number of amendments made following the examination of additional datasets available in the region. It replaces in its entirety any previous materials submitted in respect of the continental shelf of the Republic of Yemen.

7. Advisors to the Government of the Republic of Yemen

National Oceanography Centre, Southampton provided advice to the Republic of Yemen during the preparation of this document.

8. Detailed description of the outer limit of the continental shelf south east of Socotra Island

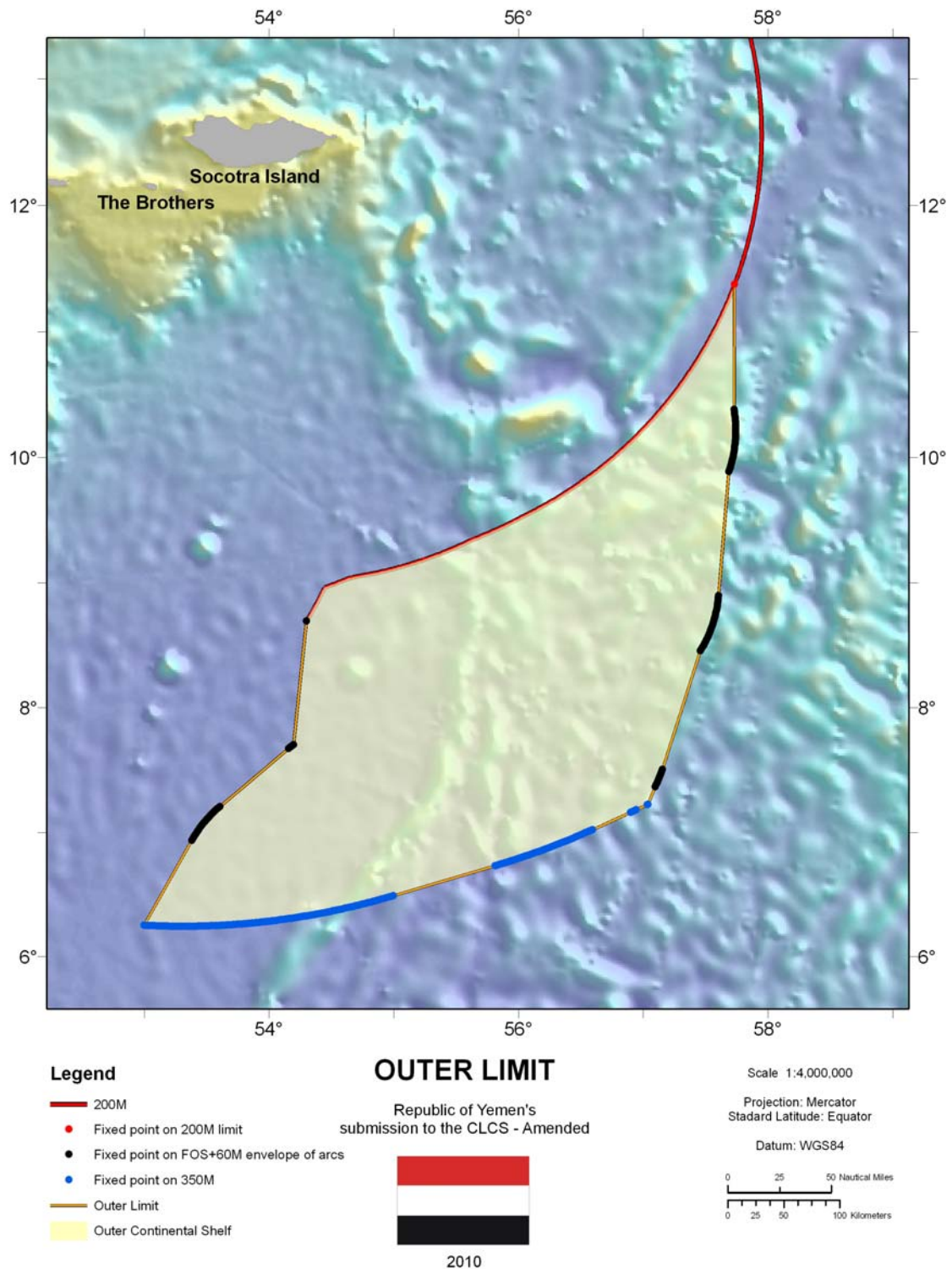


Figure 1 Outer limit of the continental shelf south east of Socotra Island.

The outer limit is generated using the 200M limit, as measured from Yemen, Hedberg formula (60 nautical miles from the foot of the continental slope), the 350M line and straight lines no longer than 60M.

Appendix 1: list of coordinates defining the outer limit of the extended continental shelf south east of Socotra Island.

Table 1 - List of coordinates and method of determination for each fixed point describing the outer limit. All coordinates relate to the WGS84 geodetic reference system.

FP	Latitude (N)	Longitude (E)	Method	From FP	to FP	Dist (M)
1	11.37922719	57.73362063	Fixed Point on 200M limit			
2	10.38254134	57.72828014	Article 76, FOS+60M	1	2	59.659
3	10.36601198	57.73096162	Article 76, FOS+60M	2	3	1.000
4	10.3494395	57.73336685	Article 76, FOS+60M	3	4	1.000
5	10.33282832	57.73549137	Article 76, FOS+60M	4	5	1.000
6	10.31618735	57.73733516	Article 76, FOS+60M	5	6	1.000
7	10.29951657	57.73890048	Article 76, FOS+60M	6	7	1.000
8	10.28282265	57.74018282	Article 76, FOS+60M	7	8	1.000
9	10.26610783	57.74118669	Article 76, FOS+60M	8	9	1.000
10	10.24938098	57.74190759	Article 76, FOS+60M	9	10	1.000
11	10.23264435	57.74234552	Article 76, FOS+60M	10	11	1.000
12	10.21590237	57.74250272	Article 76, FOS+60M	11	12	1.000
13	10.1991595	57.7423792	Article 76, FOS+60M	12	13	1.000
14	10.18242241	57.74197496	Article 76, FOS+60M	13	14	1.000
15	10.16569333	57.74128775	Article 76, FOS+60M	14	15	1.000
16	10.14897894	57.74031757	Article 76, FOS+60M	15	16	1.000
17	10.13228147	57.73906891	Article 76, FOS+60M	16	17	1.000
18	10.11560759	57.73753953	Article 76, FOS+60M	17	18	1.000
19	10.09896177	57.73572942	Article 76, FOS+60M	18	19	1.000
20	10.08234846	57.73364084	Article 76, FOS+60M	19	20	1.000
21	10.06576989	57.73127378	Article 76, FOS+60M	20	21	1.000
22	10.04923497	57.72862824	Article 76, FOS+60M	21	22	1.000
23	10.03274372	57.72570422	Article 76, FOS+60M	22	23	1.000
24	10.01630504	57.72250398	Article 76, FOS+60M	23	24	1.000
25	9.999918944	57.7190275	Article 76, FOS+60M	24	25	1.000
26	9.983594345	57.71527703	Article 76, FOS+60M	25	26	1.000
27	9.96733348	57.71125482	Article 76, FOS+60M	26	27	1.000
28	9.951140815	57.70695863	Article 76, FOS+60M	27	28	1.000
29	9.935023039	57.7023907	Article 76, FOS+60M	28	29	1.000
30	9.918982393	57.69755327	Article 76, FOS+60M	29	30	1.000
31	9.903023343	57.69244859	Article 76, FOS+60M	30	31	1.000
32	9.887150356	57.68707667	Article 76, FOS+60M	31	32	1.000
33	8.897339827	57.60431937	Article 76, FOS+60M	32	33	59.390
34	8.88066294	57.60280122	Article 76, FOS+60M	33	34	1.000
35	8.864014322	57.60100459	Article 76, FOS+60M	34	35	1.000
36	8.847398443	57.59892948	Article 76, FOS+60M	35	36	1.000
37	8.830819779	57.59657589	Article 76, FOS+60M	36	37	1.000
38	8.81428057	57.59394608	Article 76, FOS+60M	37	38	1.000

39	8.797789758	57.59103778	Article 76, FOS+60M	38	39	1.000
40	8.781347352	57.5878555	Article 76, FOS+60M	39	40	1.000
41	8.764960061	57.58439923	Article 76, FOS+60M	40	41	1.000
42	8.748632363	57.58066898	Article 76, FOS+60M	41	42	1.000
43	8.732368737	57.57666474	Article 76, FOS+60M	42	43	1.000
44	8.716173661	57.572391	Article 76, FOS+60M	43	44	1.000
45	8.700051615	57.56784553	Article 76, FOS+60M	44	45	1.000
46	8.684007078	57.56303056	Article 76, FOS+60M	45	46	1.000
47	8.668046768	57.55794834	Article 76, FOS+60M	46	47	1.000
48	8.652170695	57.55260112	Article 76, FOS+60M	47	48	1.000
49	8.636385577	57.54698889	Article 76, FOS+60M	48	49	1.000
50	8.620695896	57.54111391	Article 76, FOS+60M	49	50	1.000
51	8.605103902	57.53497617	Article 76, FOS+60M	50	51	1.000
52	8.589618548	57.52858016	Article 76, FOS+60M	51	52	1.000
53	8.574239849	57.52192589	Article 76, FOS+60M	52	53	1.000
54	8.558972291	57.5150156	Article 76, FOS+60M	53	54	1.000
55	8.543824829	57.50785154	Article 76, FOS+60M	54	55	1.000
56	8.528795244	57.5004337	Article 76, FOS+60M	55	56	1.000
57	8.513890258	57.49276658	Article 76, FOS+60M	56	57	1.000
58	8.499116595	57.48485242	Article 76, FOS+60M	57	58	1.000
59	8.48447427	57.47669347	Article 76, FOS+60M	58	59	1.000
60	8.469970007	57.46828973	Article 76, FOS+60M	59	60	1.000
61	8.455608297	57.4596457	Article 76, FOS+60M	60	61	1.000
62	7.504730463	57.15329997	Article 76, FOS+60M	61	62	59.663
63	7.488852795	57.14797296	Article 76, FOS+60M	62	63	1.000
64	7.473064199	57.14238095	Article 76, FOS+60M	63	64	1.000
65	7.457371412	57.13652843	Article 76, FOS+60M	64	65	1.000
66	7.441776686	57.13041314	Article 76, FOS+60M	65	66	1.000
67	7.426289	57.12404184	Article 76, FOS+60M	66	67	1.000
68	7.410906125	57.11741003	Article 76, FOS+60M	67	68	1.000
69	7.395637042	57.11052444	Article 76, FOS+60M	68	69	1.000
70	7.380484004	57.10338508	Article 76, FOS+60M	69	70	1.000
71	7.365453752	57.09599419	Article 76, FOS+60M	70	71	1.000
72	7.223472802	57.03977089	Article 76, 350M	71	72	9.100
73	7.219696008	57.03158274	Article 76, 350M	72	73	0.998
74	7.180055695	56.94562744	Article 76, 350M	73	74	5.695
75	7.173046391	56.93043244	Article 76, 350M	74	75	0.998
76	7.166077353	56.91521723	Article 76, 350M	75	76	0.998
77	7.159153069	56.89998404	Article 76, 350M	76	77	0.998
78	7.021452891	56.59529571	Article 76, 350M	77	78	19.914
79	7.014571279	56.58004906	Article 76, 350M	78	79	0.998
80	7.007729952	56.56477994	Article 76, 350M	79	80	0.998
81	7.000931157	56.54949511	Article 76, 350M	80	81	0.998
82	6.994177138	56.53419006	Article 76, 350M	81	82	0.998
83	6.987465655	56.5188648	Article 76, 350M	82	83	0.998

84	6.98079671	56.50352382	Article 76, 350M	83	84	0.998
85	6.974170303	56.48816263	Article 76, 350M	84	85	0.998
86	6.967586438	56.47278347	Article 76, 350M	85	86	0.998
87	6.961047359	56.45738635	Article 76, 350M	86	87	0.998
88	6.954550826	56.44197126	Article 76, 350M	87	88	0.998
89	6.948099083	56.42653596	Article 76, 350M	88	89	0.998
90	6.94168989	56.41108493	Article 76, 350M	89	90	0.998
91	6.935323247	56.39561595	Article 76, 350M	90	91	0.998
92	6.928999156	56.38012899	Article 76, 350M	91	92	0.998
93	6.922719864	56.36462407	Article 76, 350M	92	93	0.998
94	6.916485373	56.34910343	Article 76, 350M	93	94	0.998
95	6.910293439	56.33356482	Article 76, 350M	94	95	0.998
96	6.904144065	56.31800824	Article 76, 350M	95	96	0.998
97	6.898039497	56.30243595	Article 76, 350M	96	97	0.998
98	6.891979737	56.28684568	Article 76, 350M	97	98	0.998
99	6.885962541	56.27123746	Article 76, 350M	98	99	0.998
100	6.879987913	56.25561575	Article 76, 350M	99	100	0.998
101	6.874058098	56.23997384	Article 76, 350M	100	101	0.998
102	6.868173097	56.22431845	Article 76, 350M	101	102	0.998
103	6.862332912	56.20864509	Article 76, 350M	102	103	0.998
104	6.856535302	56.19295602	Article 76, 350M	103	104	0.998
105	6.850780266	56.17725122	Article 76, 350M	104	105	0.998
106	6.845072297	56.1615307	Article 76, 350M	105	106	0.998
107	6.839406907	56.14579446	Article 76, 350M	106	107	0.998
108	6.833786341	56.13004251	Article 76, 350M	107	108	0.998
109	6.828208357	56.11427483	Article 76, 350M	108	109	0.998
110	6.822677446	56.09849143	Article 76, 350M	109	110	0.998
111	6.81718912	56.08269231	Article 76, 350M	110	111	0.998
112	6.811745626	56.06687747	Article 76, 350M	111	112	0.998
113	6.806346965	56.05104915	Article 76, 350M	112	113	0.998
114	6.800990893	56.03520512	Article 76, 350M	113	114	0.998
115	6.795681902	56.01934761	Article 76, 350M	114	115	0.998
116	6.790415504	56.00347437	Article 76, 350M	115	116	0.998
117	6.785193945	55.98758542	Article 76, 350M	116	117	0.998
118	6.780017227	55.971683	Article 76, 350M	117	118	0.998
119	6.774887596	55.9557671	Article 76, 350M	118	119	0.998
120	6.769800564	55.93983547	Article 76, 350M	119	120	0.998
121	6.764758377	55.92389038	Article 76, 350M	120	121	0.998
122	6.759758791	55.90793181	Article 76, 350M	121	122	0.998
123	6.754806299	55.89195976	Article 76, 350M	122	123	0.998
124	6.749898656	55.87597199	Article 76, 350M	123	124	0.998
125	6.745035864	55.859973	Article 76, 350M	124	125	0.998
126	6.740217925	55.84396053	Article 76, 350M	125	126	0.998
127	6.735447084	55.82793234	Article 76, 350M	126	127	0.998
128	6.730718854	55.81189292	Article 76, 350M	127	128	0.998

129	6.489908782	54.9966718	Article 76, 350M	128	129	50.766
130	6.485180418	54.98063912	Article 76, 350M	129	130	0.998
131	6.480494689	54.96459521	Article 76, 350M	130	131	0.998
132	6.475856087	54.94853782	Article 76, 350M	131	132	0.998
133	6.471260123	54.93246696	Article 76, 350M	132	133	0.998
134	6.46671129	54.91638487	Article 76, 350M	133	134	0.998
135	6.462207342	54.90028931	Article 76, 350M	134	135	0.998
136	6.457748282	54.88418027	Article 76, 350M	135	136	0.998
137	6.45333411	54.86806	Article 76, 350M	136	137	0.998
138	6.448967074	54.8519285	Article 76, 350M	137	138	0.998
139	6.444642682	54.83578353	Article 76, 350M	138	139	0.998
140	6.440365429	54.81962733	Article 76, 350M	139	140	0.998
141	6.436135315	54.80345766	Article 76, 350M	140	141	0.998
142	6.43194785	54.787279	Article 76, 350M	141	142	0.998
143	6.427807526	54.77108686	Article 76, 350M	142	143	0.998
144	6.423712099	54.7548835	Article 76, 350M	143	144	0.998
145	6.41966157	54.73866891	Article 76, 350M	144	145	0.998
146	6.41565594	54.72244309	Article 76, 350M	145	146	0.998
147	6.411697456	54.70620829	Article 76, 350M	146	147	0.998
148	6.40778612	54.68996001	Article 76, 350M	147	148	0.998
149	6.40391744	54.67370051	Article 76, 350M	148	149	0.998
150	6.400095909	54.65743202	Article 76, 350M	149	150	0.998
151	6.39632153	54.6411523	Article 76, 350M	150	151	0.998
152	6.392589809	54.62486359	Article 76, 350M	151	152	0.998
153	6.388907487	54.60856366	Article 76, 350M	152	153	0.998
154	6.385267827	54.5922525	Article 76, 350M	153	154	0.998
155	6.381675321	54.57593236	Article 76, 350M	154	155	0.998
156	6.378129972	54.55960099	Article 76, 350M	155	156	0.998
157	6.374629533	54.54326063	Article 76, 350M	156	157	0.998
158	6.371174005	54.5269113	Article 76, 350M	157	158	0.998
159	6.367765637	54.51055073	Article 76, 350M	158	159	0.998
160	6.364402181	54.49418342	Article 76, 350M	159	160	0.998
161	6.361085886	54.47780489	Article 76, 350M	160	161	0.998
162	6.357814507	54.46141737	Article 76, 350M	161	162	0.998
163	6.35459029	54.44502087	Article 76, 350M	162	163	0.998
164	6.351413237	54.42861539	Article 76, 350M	163	164	0.998
165	6.348281101	54.41220317	Article 76, 350M	164	165	0.998
166	6.345193884	54.39577972	Article 76, 350M	165	166	0.998
167	6.342153833	54.37934954	Article 76, 350M	166	167	0.998
168	6.339160949	54.36290812	Article 76, 350M	167	168	0.998
169	6.336212986	54.34646221	Article 76, 350M	168	169	0.998
170	6.333312192	54.33000508	Article 76, 350M	169	170	0.998
171	6.330456321	54.3135412	Article 76, 350M	170	171	0.998
172	6.327647619	54.29707059	Article 76, 350M	171	172	0.998
173	6.324886089	54.280591	Article 76, 350M	172	173	0.998

174	6.322169484	54.26410467	Article 76, 350M	173	174	0.998
175	6.319500051	54.24760935	Article 76, 350M	174	175	0.998
176	6.316877792	54.2311073	Article 76, 350M	175	176	0.998
177	6.31430046	54.21459851	Article 76, 350M	176	177	0.998
178	6.311770303	54.19808299	Article 76, 350M	177	178	0.998
179	6.309287321	54.18155848	Article 76, 350M	178	179	0.998
180	6.306849268	54.16502948	Article 76, 350M	179	180	0.998
181	6.304458392	54.14849149	Article 76, 350M	180	181	0.998
182	6.302114693	54.13194902	Article 76, 350M	181	182	0.998
183	6.299815926	54.1153998	Article 76, 350M	182	183	0.998
184	6.297566584	54.09884385	Article 76, 350M	183	184	0.998
185	6.295362175	54.08228116	Article 76, 350M	184	185	0.998
186	6.293202699	54.06571398	Article 76, 350M	185	186	0.998
187	6.29109265	54.04914007	Article 76, 350M	186	187	0.998
188	6.289027535	54.03255941	Article 76, 350M	187	188	0.998
189	6.287009603	54.01597427	Article 76, 350M	188	189	0.998
190	6.285036605	53.99938238	Article 76, 350M	189	190	0.998
191	6.283113037	53.98278601	Article 76, 350M	190	191	0.998
192	6.281234406	53.9661829	Article 76, 350M	191	192	0.998
193	6.279402958	53.94957754	Article 76, 350M	192	193	0.998
194	6.277616448	53.93296544	Article 76, 350M	193	194	0.998
195	6.27587937	53.91634661	Article 76, 350M	194	195	0.998
196	6.27418723	53.89972553	Article 76, 350M	195	196	0.998
197	6.272544522	53.88309996	Article 76, 350M	196	197	0.998
198	6.270946754	53.8664699	Article 76, 350M	197	198	0.998
199	6.269393926	53.8498331	Article 76, 350M	198	199	0.998
200	6.267890532	53.83319406	Article 76, 350M	199	200	0.998
201	6.266432078	53.81655052	Article 76, 350M	200	201	0.998
202	6.265023059	53.79990249	Article 76, 350M	201	202	0.998
203	6.263658982	53.78325222	Article 76, 350M	202	203	0.998
204	6.262342093	53.76659745	Article 76, 350M	203	204	0.998
205	6.261072393	53.74993819	Article 76, 350M	204	205	0.998
206	6.259847636	53.73327669	Article 76, 350M	205	206	0.998
207	6.258672315	53.7166107	Article 76, 350M	206	207	0.998
208	6.257541937	53.69994246	Article 76, 350M	207	208	0.998
209	6.25645875	53.68326973	Article 76, 350M	208	209	0.998
210	6.255422753	53.66659475	Article 76, 350M	209	210	0.998
211	6.254433947	53.64991753	Article 76, 350M	210	211	0.998
212	6.253492333	53.63323806	Article 76, 350M	211	212	0.998
213	6.25259791	53.6165541	Article 76, 350M	212	213	0.998
214	6.251750679	53.59987013	Article 76, 350M	213	214	0.998
215	6.250948392	53.58318168	Article 76, 350M	214	215	0.998
216	6.250195545	53.56649323	Article 76, 350M	215	216	0.998
217	6.249487643	53.54980029	Article 76, 350M	216	217	0.998
218	6.248826934	53.53310734	Article 76, 350M	217	218	0.998

219	6.248213417	53.51641215	Article 76, 350M	218	219	0.998
220	6.247647093	53.49971472	Article 76, 350M	219	220	0.998
221	6.247127963	53.48301728	Article 76, 350M	220	221	0.998
222	6.246656025	53.46631536	Article 76, 350M	221	222	0.998
223	6.246229034	53.44961567	Article 76, 350M	222	223	0.998
224	6.245851484	53.43291375	Article 76, 350M	223	224	0.998
225	6.245518879	53.41620958	Article 76, 350M	224	225	0.998
226	6.245235716	53.3995054	Article 76, 350M	225	226	0.998
227	6.244997499	53.38280123	Article 76, 350M	226	227	0.998
228	6.244806476	53.36609481	Article 76, 350M	227	228	0.998
229	6.244662647	53.34939064	Article 76, 350M	228	229	0.998
230	6.244566012	53.33268422	Article 76, 350M	229	230	0.998
231	6.244516571	53.3159778	Article 76, 350M	230	231	0.998
232	6.244514323	53.29927138	Article 76, 350M	231	232	0.998
233	6.244557023	53.28256496	Article 76, 350M	232	233	0.998
234	6.244649163	53.26585855	Article 76, 350M	233	234	0.998
235	6.244788498	53.24915213	Article 76, 350M	234	235	0.998
236	6.244972779	53.23244571	Article 76, 350M	235	236	0.998
237	6.245204253	53.21574154	Article 76, 350M	236	237	0.998
238	6.245485169	53.19903736	Article 76, 350M	237	238	0.998
239	6.245811032	53.18233544	Article 76, 350M	238	239	0.998
240	6.246184088	53.16563126	Article 76, 350M	239	240	0.998
241	6.246604337	53.14893158	Article 76, 350M	240	241	0.998
242	6.24707178	53.1322319	Article 76, 350M	241	242	0.998
243	6.247584168	53.11553222	Article 76, 350M	242	243	0.998
244	6.248145998	53.09883479	Article 76, 350M	243	244	0.998
245	6.24875502	53.0821396	Article 76, 350M	244	245	0.998
246	6.249408987	53.06544665	Article 76, 350M	245	246	0.998
247	6.250110147	53.04875371	Article 76, 350M	246	247	0.998
248	6.250860747	53.03206301	Article 76, 350M	247	248	0.998
249	6.251656292	53.0153768	Article 76, 350M	248	249	0.998
250	6.252499029	52.9986906	Article 76, 350M	249	250	0.998
251	6.252624877	52.99633252	Article 76, 350M	250	251	0.142
252	6.936324142	53.3809754	Article 76, FOS+60M	251	252	1.000
253	6.95079424	53.38941058	Article 76, FOS+60M	252	253	1.000
254	6.965120269	53.39808606	Article 76, FOS+60M	253	254	1.000
255	6.979299998	53.40700184	Article 76, FOS+60M	254	255	1.000
256	6.993328952	53.41615118	Article 76, FOS+60M	255	256	1.000
257	7.0072049	53.42553409	Article 76, FOS+60M	256	257	1.000
258	7.020921124	53.43514831	Article 76, FOS+60M	257	258	1.000
259	7.034475392	53.4449916	Article 76, FOS+60M	258	259	1.000
260	7.047863233	53.45505947	Article 76, FOS+60M	259	260	1.000
261	7.061082416	53.46534967	Article 76, FOS+60M	260	261	1.000
262	7.074126224	53.47585771	Article 76, FOS+60M	261	262	1.000
263	7.086994672	53.48658584	Article 76, FOS+60M	262	263	1.000

264	7.099683287	53.49752507	Article 76, FOS+60M	263	264	1.000
265	7.112185354	53.50867541	Article 76, FOS+60M	264	265	1.000
266	7.124500887	53.52003461	Article 76, FOS+60M	265	266	1.000
267	7.136627659	53.53159817	Article 76, FOS+60M	266	267	1.000
268	7.14855671	53.54336161	Article 76, FOS+60M	267	268	1.000
269	7.160290301	53.55532493	Article 76, FOS+60M	268	269	1.000
270	7.171821715	53.56748138	Article 76, FOS+60M	269	270	1.000
271	7.183148725	53.57982872	Article 76, FOS+60M	270	271	1.000
272	7.194269104	53.59236471	Article 76, FOS+60M	271	272	1.000
273	7.205178381	53.60508486	Article 76, FOS+60M	272	273	1.000
274	7.673072685	54.15809897	Article 76, FOS+60M	273	274	43.217
275	7.683768276	54.17101226	Article 76, FOS+60M	274	275	1.000
276	7.694248525	54.18410295	Article 76, FOS+60M	275	276	1.000
277	7.704508969	54.19736883	Article 76, FOS+60M	276	277	1.000
278	8.694304265	54.3014656	Article 76, FOS+60M	277	278	59.391