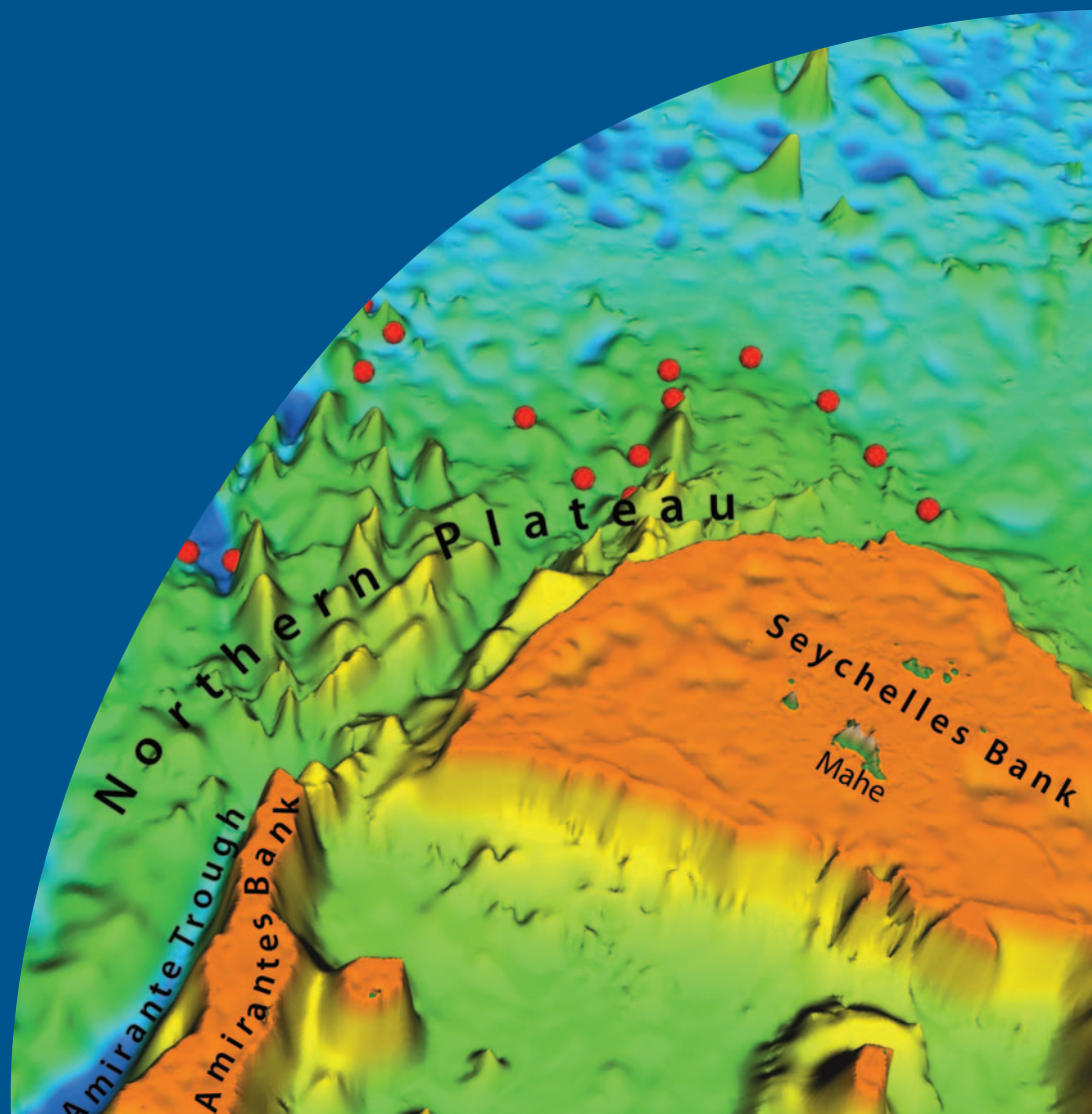




# Submission by the Republic of Seychelles to the Commission on the Limits of the Continental Shelf concerning the Northern Plateau Region



EXECUTIVE SUMMARY  
May 2009  
SEY-ES-DOC

1982 UNITED NATIONS CONVENTION ON THE LAW OF THE SEA



**Submission by the Republic of Seychelles to the  
Commission on the Limits of the Continental  
Shelf concerning the  
Northern Plateau Region**

**EXECUTIVE SUMMARY**

**MAY 2009**

**SEY-ES-DOC**



## PREFACE

**The Submission by the Republic of Seychelles to the Commission on the Limits of the Continental Shelf concerning the Northern Plateau Region was prepared by the following members of the Maritime Boundaries Technical Committee:**

Mr Raymond Chang-Tave, Special Adviser,  
Ministry of National Development

Mr Francis Coeur de Lion, Director,  
Centre for GIS and IT Support Services,  
Ministry of National Development

Mr Michael Rosette, Director-General,  
Maritime Safety Administration,  
Ministry of Environment, Natural Resources and Transport

Mr Selby Pillay, Director-General, Multilateral Affairs,  
Ministry of Foreign Affairs

Mrs Fiona Robinson, Principal Legislative Drafter,  
Department of Legal Affairs

Mr Patrick Joseph, Exploration Manager,  
Seychelles Petroleum Company

Mr Patrick Samson, Senior Geologist  
Seychelles Petroleum Company

Mr Joseph Athanasius, Legal Consultant,  
Trust & Fiduciary Services

**The following advisers provided legal and technical assistance to the Republic of Seychelles during the preparation of this Submission:**

Mr Joshua Brien, Legal Adviser, Commonwealth Secretariat,  
London

Mr Harald Brekke, Member of the Commission on the Limits  
of the Continental Shelf (2002-Present), Norway

Dr Karl Hinz, Emeritus Professor; Former Member of the  
Commission on the Limits of the Continental Shelf (1998-2002)



## CONTENTS

1.	Introduction	5
2.	Partial Submission	8
3.	Maps and Coordinates	8
4.	Provisions of Article 76 invoked on the Submission	11
5.	Commission Members who provided advice on the Submission	11
6.	Outstanding Maritime Delimitations	11
7.	Overview of the Extended Continental Shelf in the Northern Plateau Region	11
8.	Note of Authentication	15
9.	Notes	15



## ANNEXES

**Annex 1:** Table listing the points defining the outer limits of the extended continental shelf of the Republic of Seychelles in the Northern Plateau Region (Decimal Degrees)

**SEY-ES-DOC-ANNEX 1**

**Annex 2:** Table listing the points defining the outer limits of the extended continental shelf of the Republic of Seychelles in the Northern Plateau Region (Degrees, minutes and seconds)

**SEY-ES-DOC-ANNEX 2**

## MAPS

(A0 Executive Summary map supplied separately)

**Figure 1:** Map depicting the outer limits of the continental shelf of the Republic of Seychelles in the Northern Plateau Region and the area of extended continental shelf

**SEY-ES-DOC-MAP 1**

**Figure 2:** Map depicting the outer limits of the continental shelf of the Republic of Seychelles in the Northern Plateau Region and the provisions of Article 76 invoked

**SEY-ES-DOC-MAP 2**



## 1. INTRODUCTION

---

- 1-1 This Executive Summary has been prepared as part of the Submission by the Republic of Seychelles to the Commission on the Limits of the Continental Shelf ('the Commission') made pursuant to paragraph 8 of Article 76 of the 1982 United Nations Convention on the Law of the Sea ('the Convention') in support of the establishment by the Republic of Seychelles of the outer limits of the continental shelf that lies beyond 200 nautical miles (M) from the baselines from which the breadth of the territorial sea is measured (hereinafter referred to as 'the territorial sea baselines') in the Northern Plateau Region.
- 1-2 The Republic of Seychelles is a small island developing State in the Indian Ocean, northeast of Madagascar and approximately 1,600 km east of Kenya. The 155 islands that comprise the Republic of Seychelles are divided into various groups under Schedule 1 to the *Constitution of the Republic of Seychelles*.
- 1-3 The Mahé Group comprising 42 granitic islands includes *Mahé*, which is the location of the capital (Victoria). To the west of the Mahé Group is the Amirantes Group of 29 coral islands, which includes *Bancs Africains* (African Banks: African Banks and South Island). In addition, a further 13 coral islands located south-south west of the Amirantes Group make up the Farquhar Group of islands. The Aldabra Group, located west of the Farquhar Group, represents the largest collection of islands, comprising 67 coral islands. Finally, there are two coralline islands found to the south of the Mahé Group and two further coral islands, including *Ile aux Vaches* (Bird Island), to be found to the north of the Mahé Group.



- 1-4** The Republic of Seychelles is a Party to the Convention, which it signed on the day it was opened for signature on 10 December 1982 and subsequently ratified on 16 September 1991.
- 1-5** The *Maritime Zones Act No. 2 of 1999*, provides for the establishment and delimitation of the maritime zones of the Republic of Seychelles, including the continental shelf, in a manner that is consistent with the provisions of the Convention. In this regard, a list of geographical coordinates of points defining the outer limits of the exclusive economic zone and certain areas of the continental shelf of the Republic of Seychelles is contained in the *Maritime Zones (Exclusive Economic Zone and Continental Shelf) Order, 2008* (S.I. 89 of 2008), also made under the Maritime Zones Act.
- 1-6** Under Article 4 of Annex II to the Convention, as supplemented by the decisions of the Eleventh (SPLOS/72) and Eighteenth (SPLOS/183) meetings of the States Parties to the Convention respectively regarding the ten-year period established by Article 4 of Annex II to the Convention, a coastal State for which the Convention entered into force before 13 May 1999 is requested to submit particulars of the outer limits of the continental shelf to the Commission, together with supporting scientific and technical data by 13 May 2009. This Submission by the Republic of Seychelles satisfies that requirement in respect of the Northern Plateau Region.
- 1-7** As provided for under paragraph 1 of Article 76, the Republic of Seychelles has a continental shelf comprising the seabed and subsoil of the submarine areas that extend beyond its territorial sea throughout the natural prolongation of its land territory to the outer edge of the continental margin, up to the limits provided for in paragraphs 4 to 6 of Article 76 or, to a distance of 200 M from



the territorial sea baseline where the outer edge of the continental margin does not extend beyond that distance. Article 121 of the Convention provides in effect that in the case of Islands, the outer limit of the continental shelf is to be determined in the same manner as other land territory.

- 1-8** Paragraphs 4 to 6 of Article 76 set out a number of provisions by which a coastal State may establish the outer edge of its continental margin, and its legal continental shelf, wherever that margin extends beyond 200 M from its territorial sea baselines.
- 1-9** As provided for in paragraph 7 of Article 76, the coastal State is to delineate the outer limits of those portions of its continental shelf that extend beyond 200 M from its territorial sea baselines by straight lines not exceeding 60 M in length, connecting fixed points ('Article 76 fixed points') defined by coordinates of latitude and longitude.
- 1-10** The data submitted by the Republic of Seychelles in support of this Submission establish that the outer edge of the continental margin extends beyond 200 M from the territorial sea baselines established in respect of *Ile aux Vaches* (Bird Island) and *Bancs Africains* (African Banks) in the Northern Plateau Region. The Republic of Seychelles intends to establish the outer limits of the continental shelf in this region following the making of recommendations by the Commission pursuant to paragraph 8 of Article 76.
- 1-11** A separate section of this Executive Summary document provides an outline of the region of extended continental shelf. A map depicting the outer limit of the extended continental shelf is shown in **Figure 1** below (**SEY-DOC-ES-MAP 1**).





- 1-12** The part of the continental shelf lying more than 200 M from the territorial sea baseline of the Republic of Seychelles is referred to in this Executive Summary document and throughout the Submission as the 'extended continental shelf'.

## **2. PARTIAL SUBMISSION**

---

- 2-1** In accordance with paragraph 3 of Annex I to the Rules of Procedure, this Submission represents a partial submission in respect of a portion only of the extended continental shelf of the Republic of Seychelles.
- 2-2** In this regard, the Republic of Seychelles notes that it made a partial submission jointly with the Republic of Mauritius on 1 December 2008 in respect of an area of extended continental shelf in the region of the Mascarene Plateau (see: **Section 9, Notes**). The Republic of Seychelles intends also to submit in accordance with the decision contained in SPLOS/183, Preliminary Information in respect of another area of its extended continental shelf in the Aldabra Island Region.

## **3. MAPS AND COORDINATES**

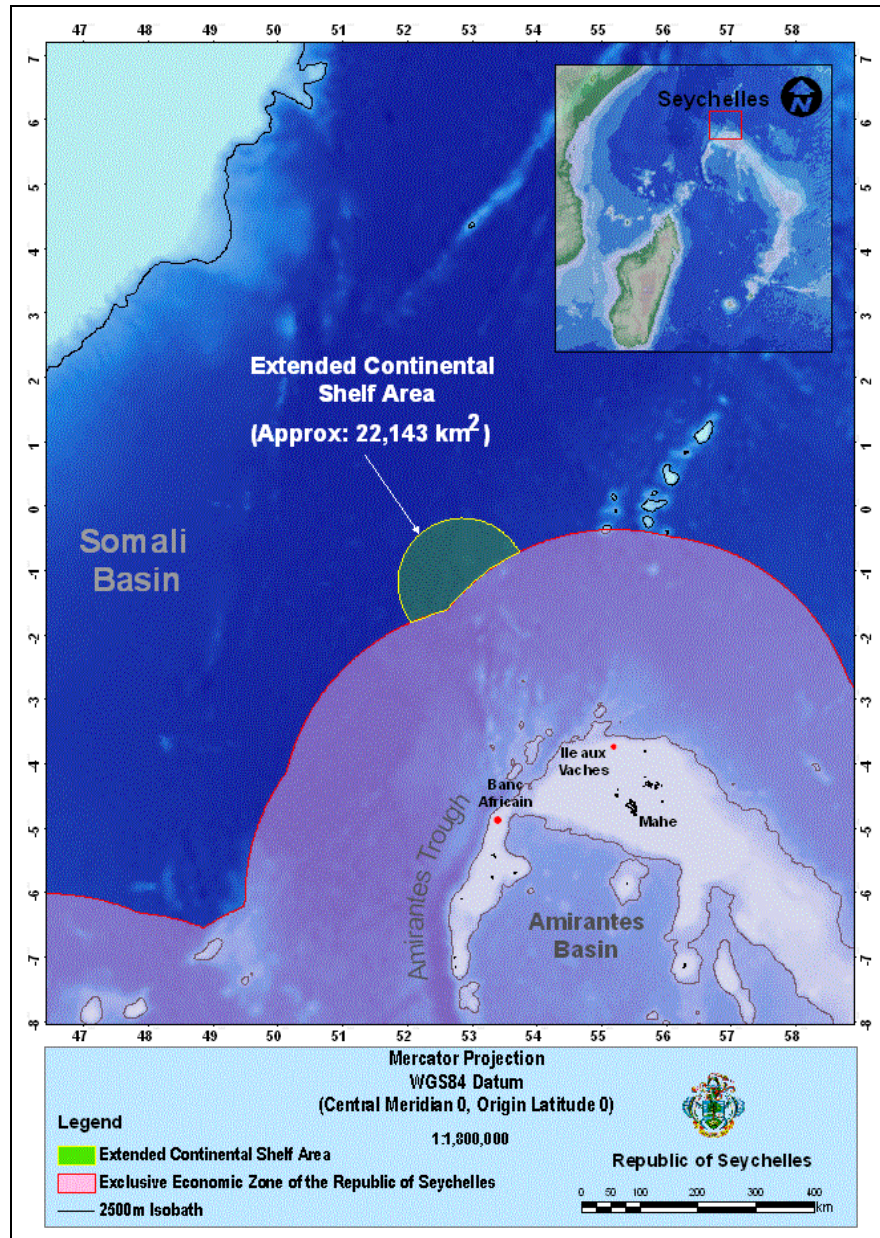
---

- 3-1** Two maps at an appropriate scale are included in this Executive Summary in two forms: as Figures 1 to 2 within this document, and as separate A0-size maps. **Figure 1 (SEY-ES-DOC-MAP 1)** depicts the outer limit lines and the area of extended continental shelf submitted to the Commission. **Figure 2 (SEY-ES-DOC-MAP 2)** depicts the outer limit line by reference to the location



of the Article 76 fixed points that define the outer limit of the area and the provisions of Article 76 invoked.

- 3-2** Lists of coordinates of the Article 76 fixed points that define the outer limits of the extended continental shelf of the Republic of Seychelles in the Northern Plateau Region are supplied in two annexes to this Executive Summary. **Annex 1 (SEY-ES-DOC-ANNEX 1)**, lists the fixed points defining the outer limits of the extended continental shelf in decimal degrees. **Annex 2 (SEY-ES-DOC-ANNEX 2)**, lists the fixed points defining the outer limit of the extended continental shelf in degrees, minute and seconds. The provision of Article 76 invoked to define each fixed point, as well as the distance between adjacent points, is indicated in the relevant annex.



**Figure 1** Map depicting the outer limit of the extended continental shelf of the Republic of Seychelles in the Northern Plateau Region and the area of extended continental shelf.

**SEY-ES-DOC-MAP 1**



#### **4. PROVISIONS OF ARTICLE 76 INVOKED**

---

The Republic of Seychelles invokes paragraphs 4(a)(ii), 4(b), 5 and 7 of Article 76 of the Convention in support of the determination of the outer limit of the extended continental shelf in the Northern Plateau Region, as outlined in Section 7 of this Executive Summary.

#### **5. COMMISSION MEMBERS WHO PROVIDED ADVICE ON THE SUBMISSION**

---

The Republic of Seychelles was assisted in the preparation of this Submission by Mr Michael Rosette (Seychelles, 2007-present) and Mr Harald Brekke (Norway, 2002-present). In addition, a list of advisers that provided legal and technical assistance to the Republic of Seychelles during the preparation of the Submission is included in the Preface to this Executive Summary.

#### **6. OUTSTANDING MARITIME DELIMITATIONS**

---

The area of the extended continental shelf of the Republic of Seychelles included in the Submission is not affected by any outstanding delimitations with opposite or adjacent coastal States.





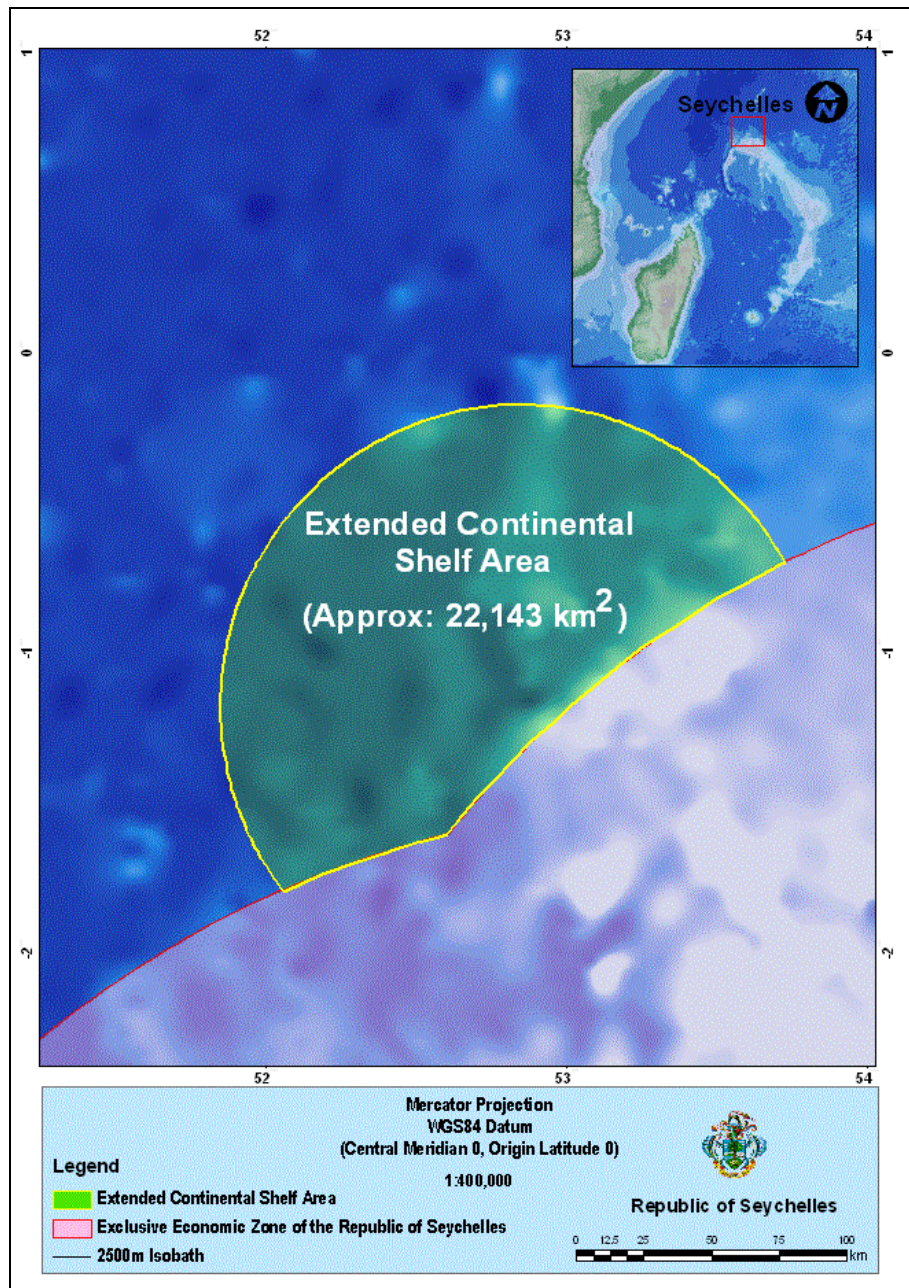
## 7. OVERVIEW OF THE EXTENDED CONTINENTAL SHELF IN THE NORTHERN PLATEAU REGION

---

- 7-1 This Submission concerns the Northern Plateau, a plateau that lies between latitudes 1° and 6° south of the equator and longitudes 51° and 56° east. It covers an area of approximately 100,000 sq km and is located at the northern extremity of the spectacular bathymetric feature known as the Mascarene Plateau. The geological, geophysical and geo-morphological setting of the Northern Plateau is that of a passive continental margin formed as a result of episodes of rifting and continental breakup, which commenced with the separation of the Mascarene Plateau from the east coast of Africa and the subsequent rifting/tectonic episode that separated the Mascarene micro-continent from Madagascar.
- 7-2 The Northern Plateau and its associated landmasses (*Ile aux Vaches* and *Bancs Africains*) are all physically juxtaposed as part of the same morphological feature and are the result of a linked chain of geological processes and events. As such, the Northern Plateau and its structural highs are natural components of the continental margin and comprise the submerged prolongation of the relevant land territory of the Republic of Seychelles.
- 7-3 The outer limit of the extended continental shelf in the Northern Plateau Region determined by the Republic of Seychelles in accordance with Article 76 of the Convention encloses an area of approximately **22,143 km<sup>2</sup>** beyond 200 M from the territorial sea baselines.



- 7-4** The outer limits of the extended continental shelf of the Republic of Seychelles in the Northern Plateau Region are defined by **398** fixed points, of which:
- **396** are defined by arcs 60 M from the foot of the slope (Article 76, paragraph 4(a)(ii)); and,
  - **2** are points (**ECS-1** and **ECS-398**) where the outer limit line commences and terminates respectively at points located along the line 200 M from the territorial sea baselines of the Republic of Seychelles.
- 7-5** Each successive pair of fixed points delineating the outer limits, including points where the outer limit line commences and terminates, is connected by geodesics not exceeding 60 M in length as provided for under paragraph 7 of Article 76 of the Convention.
- 7-6** The list of fixed points delineating the outer limits of the extended continental shelf of the Republic of Seychelles is given in the two annexes to this Executive Summary.



**Figure 2** Map depicting the outer limit of the continental shelf of the Republic of Seychelles in the Northern Plateau Region and the provisions of Article 76 invoked

**SEY-ES-DOC-MAP 2**



## 8. NOTE OF AUTHENTICATION

---

All maps, charts and databases forming part of this Submission by the Republic of Seychelles concerning the Northern Plateau Region were prepared by the Centre for GIS and IT Support of the Ministry of National Development, which has responsibility for preparing such materials and for certifying their quality and reliability.

## 9. NOTES

---

### Previous Submissions

- 9.1 The Executive Summary of the *Joint Submission to the Commission on the Limits of the Continental Shelf concerning the Mascarene Plateau Region* (SMS-ES-DOC) referred to in **Section 2** of this Executive Summary may be viewed at:

[http://www.un.org/Depts/los/clcs\\_new/submissions\\_files/musc08/sms\\_es\\_doc.pdf](http://www.un.org/Depts/los/clcs_new/submissions_files/musc08/sms_es_doc.pdf)

### Map Notes

- 9-2 The depiction of the 200 M line from the territories of a coastal State(s) other than the Republic of Seychelles, and lines equidistant from the land territory of the Republic of Seychelles and other coastal States is based on information available at the time of production, and should not be taken to signify acceptance of their validity at international law of any basepoints determined by another coastal State, with the exception of those cases where lines and basepoints have been agreed in a maritime boundary treaty





between the Republic of Seychelles and an opposite or adjacent coastal State.

- 9-3** Highlighted areas (green) depict the area of extended continental shelf as submitted by the Republic of Seychelles to the Commission. Light-shaded areas identify the area within 200 M of the territorial sea baselines of the Republic of Seychelles. Un-shaded areas identify all regions beyond the areas described above.

### Table Notes

- 9-4** The tables included at **Annex 1** and **Annex 2** to this Executive Summary list by number (identifiers) and coordinates (in latitude and longitude) the fixed points that define the outer limits of the extended continental shelf of the Republic of Seychelles in the Northern Plateau Region. The distance in nautical miles (M) from one point on the outer limit line to the next is given in the fourth column of each table.
- 9-5** All coordinates of fixed points defined according to the provisions of Article 76 of the Convention are expressed in this document in the WSG84 geodetic reference system.

### Abbreviations

- 9-6** The following abbreviations are used in the tables included at **Annex 1** and **Annex 2** to denote the Article 76 provisions invoked:

<b>200 M</b>	200 M line from territorial sea baseline (Article 76, para. 1)
<b>60 M</b>	60 M (Hedberg) formula point (Article 76, para. 4(a)(ii))
<b>350 M</b>	350 M constraint point (Article 76, para. 5)
<b>2500 m + 100M</b>	2500 m + 100 M constraint point (Article 76, para. 5)



Other abbreviations used:

<b>M</b>	nautical mile (1852 m)
<b>m</b>	metre



**ANNEX 1**

**Table listing the points defining the outer limits of the extended continental shelf of the Republic of Seychelles in the Northern Plateau Region (Decimal Degrees)**

**SEY-ES-DOC-ANNEX 1**

Point_ID	Latitude (decimal deg°)	Longitude (decimal deg°)	Distance (M)	Article 76 Criterion
ECS 1	-1.805652	52.059071	-	60 M distance criterion / Baseline +200M
ECS2	-1.802294	52.056484	0.50	60 M distance criterion
ECS3	-1.795632	52.051445	0.50	60 M distance criterion
ECS4	-1.788928	52.046459	0.50	60 M distance criterion
ECS5	-1.782180	52.041531	0.50	60 M distance criterion
ECS6	-1.775392	52.036652	0.50	60 M distance criterion
ECS7	-1.768565	52.031837	0.50	60 M distance criterion
ECS8	-1.761697	52.027077	0.50	60 M distance criterion
ECS9	-1.754791	52.022369	0.50	60 M distance criterion
ECS10	-1.747842	52.017723	0.50	60 M distance criterion
ECS11	-1.740856	52.013134	0.50	60 M distance criterion
ECS12	-1.733833	52.008602	0.50	60 M distance criterion
ECS13	-1.726771	52.004128	0.50	60 M distance criterion
ECS14	-1.719671	51.999714	0.50	60 M distance criterion
ECS15	-1.712534	51.995354	0.50	60 M distance criterion
ECS16	-1.705361	51.991062	0.50	60 M distance criterion
ECS17	-1.698153	51.986828	0.50	60 M distance criterion
ECS18	-1.690909	51.982647	0.50	60 M distance criterion
ECS19	-1.683631	51.978531	0.50	60 M distance criterion
ECS20	-1.676319	51.974476	0.50	60 M distance criterion
ECS21	-1.668972	51.970482	0.50	60 M distance criterion
ECS22	-1.661592	51.966545	0.50	60 M distance criterion
ECS23	-1.654180	51.962669	0.50	60 M distance criterion
ECS24	-1.646736	51.958862	0.50	60 M distance criterion
ECS25	-1.639260	51.955112	0.50	60 M distance criterion
ECS26	-1.631754	51.951424	0.50	60 M distance criterion
ECS27	-1.624216	51.947800	0.50	60 M distance criterion
ECS28	-1.616649	51.944237	0.50	60 M distance criterion
ECS29	-1.609051	51.940739	0.50	60 M distance criterion
ECS30	-1.601424	51.937298	0.50	60 M distance criterion
ECS31	-1.593769	51.933926	0.50	60 M distance criterion



ECS32	-1.586086	51.930614	0.50	60 M distance criterion
ECS33	-1.578375	51.927372	0.50	60 M distance criterion
ECS34	-1.570638	51.924187	0.50	60 M distance criterion
ECS35	-1.562874	51.921070	0.50	60 M distance criterion
ECS36	-1.555084	51.918015	0.50	60 M distance criterion
ECS37	-1.547269	51.915028	0.50	60 M distance criterion
ECS38	-1.539429	51.912106	0.50	60 M distance criterion
ECS39	-1.531564	51.909245	0.50	60 M distance criterion
ECS40	-1.523675	51.906448	0.50	60 M distance criterion
ECS41	-1.515763	51.903717	0.50	60 M distance criterion
ECS42	-1.507829	51.901054	0.50	60 M distance criterion
ECS43	-1.499873	51.898460	0.50	60 M distance criterion
ECS44	-1.491895	51.895931	0.50	60 M distance criterion
ECS45	-1.483896	51.893463	0.50	60 M distance criterion
ECS46	-1.475877	51.891068	0.50	60 M distance criterion
ECS47	-1.467838	51.888729	0.50	60 M distance criterion
ECS48	-1.459780	51.886467	0.50	60 M distance criterion
ECS49	-1.451702	51.884266	0.50	60 M distance criterion
ECS50	-1.443608	51.882137	0.50	60 M distance criterion
ECS51	-1.435495	51.880070	0.50	60 M distance criterion
ECS52	-1.427365	51.878071	0.50	60 M distance criterion
ECS53	-1.419219	51.876144	0.50	60 M distance criterion
ECS54	-1.411057	51.874279	0.50	60 M distance criterion
ECS55	-1.402879	51.872482	0.50	60 M distance criterion
ECS56	-1.394687	51.870758	0.50	60 M distance criterion
ECS57	-1.386481	51.869099	0.50	60 M distance criterion
ECS58	-1.378260	51.867508	0.50	60 M distance criterion
ECS59	-1.370027	51.865986	0.50	60 M distance criterion
ECS60	-1.361781	51.864529	0.50	60 M distance criterion
ECS61	-1.353523	51.863140	0.50	60 M distance criterion
ECS62	-1.345255	51.861824	0.50	60 M distance criterion
ECS63	-1.336975	51.860577	0.50	60 M distance criterion
ECS64	-1.328686	51.859394	0.50	60 M distance criterion
ECS65	-1.320386	51.858280	0.50	60 M distance criterion
ECS66	-1.312078	51.857239	0.50	60 M distance criterion
ECS67	-1.303761	51.856266	0.50	60 M distance criterion
ECS68	-1.295436	51.855358	0.50	60 M distance criterion
ECS69	-1.287104	51.854523	0.50	60 M distance criterion
ECS70	-1.278766	51.853756	0.50	60 M distance criterion
ECS71	-1.270421	51.853054	0.50	60 M distance criterion
ECS72	-1.262070	51.852425	0.50	60 M distance criterion
ECS73	-1.253715	51.851864	0.50	60 M distance criterion
ECS74	-1.245355	51.851372	0.50	60 M distance criterion



ECS75	-1.236991	51.850952	0.50	60 M distance criterion
ECS76	-1.228624	51.850597	0.50	60 M distance criterion
ECS77	-1.220254	51.850315	0.50	60 M distance criterion
ECS78	-1.211882	51.850098	0.50	60 M distance criterion
ECS79	-1.203509	51.849953	0.50	60 M distance criterion
ECS80	-1.195135	51.849876	0.50	60 M distance criterion
ECS81	-1.186761	51.849873	0.50	60 M distance criterion
ECS82	-1.178386	51.849937	0.50	60 M distance criterion
ECS83	-1.170013	51.850067	0.50	60 M distance criterion
ECS84	-1.161641	51.850269	0.50	60 M distance criterion
ECS85	-1.153271	51.850536	0.50	60 M distance criterion
ECS86	-1.144903	51.850880	0.50	60 M distance criterion
ECS87	-1.136539	51.851288	0.50	60 M distance criterion
ECS88	-1.128178	51.851768	0.50	60 M distance criterion
ECS89	-1.119822	51.852318	0.50	60 M distance criterion
ECS90	-1.111470	51.852932	0.50	60 M distance criterion
ECS91	-1.103124	51.853619	0.50	60 M distance criterion
ECS92	-1.094784	51.854374	0.50	60 M distance criterion
ECS93	-1.086451	51.855194	0.50	60 M distance criterion
ECS94	-1.078124	51.856091	0.50	60 M distance criterion
ECS95	-1.069806	51.857052	0.50	60 M distance criterion
ECS96	-1.061496	51.858086	0.50	60 M distance criterion
ECS97	-1.053195	51.859184	0.50	60 M distance criterion
ECS98	-1.044903	51.860352	0.50	60 M distance criterion
ECS99	-1.036621	51.861588	0.50	60 M distance criterion
ECS100	-1.028351	51.862896	0.50	60 M distance criterion
ECS101	-1.020091	51.864265	0.50	60 M distance criterion
ECS102	-1.011843	51.865707	0.50	60 M distance criterion
ECS103	-1.003608	51.867218	0.50	60 M distance criterion
ECS104	-0.995385	51.868797	0.50	60 M distance criterion
ECS105	-0.987176	51.870445	0.50	60 M distance criterion
ECS106	-0.978981	51.872154	0.50	60 M distance criterion
ECS107	-0.970801	51.873940	0.50	60 M distance criterion
ECS108	-0.962635	51.875790	0.50	60 M distance criterion
ECS109	-0.954486	51.877708	0.50	60 M distance criterion
ECS110	-0.946353	51.879688	0.50	60 M distance criterion
ECS111	-0.938237	51.881741	0.50	60 M distance criterion
ECS112	-0.930139	51.883862	0.50	60 M distance criterion
ECS113	-0.922058	51.886047	0.50	60 M distance criterion
ECS114	-0.913997	51.888298	0.50	60 M distance criterion
ECS115	-0.905954	51.890617	0.50	60 M distance criterion
ECS116	-0.897932	51.893005	0.50	60 M distance criterion
ECS117	-0.889930	51.895454	0.50	60 M distance criterion



ECS118	-0.881947	51.897972	0.50	60 M distance criterion
ECS119	-0.873987	51.900555	0.50	60 M distance criterion
ECS120	-0.866049	51.903206	0.50	60 M distance criterion
ECS121	-0.858134	51.905922	0.50	60 M distance criterion
ECS122	-0.850240	51.908703	0.50	60 M distance criterion
ECS123	-0.842371	51.911552	0.50	60 M distance criterion
ECS124	-0.834526	51.914463	0.50	60 M distance criterion
ECS125	-0.826705	51.917439	0.50	60 M distance criterion
ECS126	-0.818910	51.920483	0.50	60 M distance criterion
ECS127	-0.811141	51.923584	0.50	60 M distance criterion
ECS128	-0.803397	51.926750	0.50	60 M distance criterion
ECS129	-0.795681	51.929985	0.50	60 M distance criterion
ECS130	-0.787992	51.933281	0.50	60 M distance criterion
ECS131	-0.780332	51.936642	0.50	60 M distance criterion
ECS132	-0.772699	51.940067	0.50	60 M distance criterion
ECS133	-0.765095	51.943554	0.50	60 M distance criterion
ECS134	-0.757522	51.947102	0.50	60 M distance criterion
ECS135	-0.749978	51.950718	0.50	60 M distance criterion
ECS136	-0.742465	51.954391	0.50	60 M distance criterion
ECS137	-0.734983	51.958126	0.50	60 M distance criterion
ECS138	-0.727532	51.961926	0.50	60 M distance criterion
ECS139	-0.720113	51.965782	0.50	60 M distance criterion
ECS140	-0.712727	51.969704	0.50	60 M distance criterion
ECS141	-0.705376	51.973690	0.50	60 M distance criterion
ECS142	-0.698056	51.977730	0.50	60 M distance criterion
ECS143	-0.690771	51.981831	0.50	60 M distance criterion
ECS144	-0.683521	51.985996	0.50	60 M distance criterion
ECS145	-0.676306	51.990223	0.50	60 M distance criterion
ECS146	-0.669126	51.994503	0.50	60 M distance criterion
ECS147	-0.661982	51.998844	0.50	60 M distance criterion
ECS148	-0.654876	52.003246	0.50	60 M distance criterion
ECS149	-0.647806	52.007706	0.50	60 M distance criterion
ECS150	-0.640774	52.012226	0.50	60 M distance criterion
ECS151	-0.633781	52.016800	0.50	60 M distance criterion
ECS152	-0.626826	52.021435	0.50	60 M distance criterion
ECS153	-0.619910	52.026123	0.50	60 M distance criterion
ECS154	-0.613033	52.030876	0.50	60 M distance criterion
ECS155	-0.606196	52.035675	0.50	60 M distance criterion
ECS156	-0.599400	52.040543	0.50	60 M distance criterion
ECS157	-0.592645	52.045460	0.50	60 M distance criterion
ECS158	-0.585932	52.050430	0.50	60 M distance criterion
ECS159	-0.579261	52.055458	0.50	60 M distance criterion
ECS160	-0.572633	52.060543	0.50	60 M distance criterion



ECS161	-0.566046	52.065681	0.50	60 M distance criterion
ECS162	-0.559502	52.070873	0.50	60 M distance criterion
ECS163	-0.553002	52.076122	0.50	60 M distance criterion
ECS164	-0.546548	52.081425	0.50	60 M distance criterion
ECS165	-0.540138	52.086773	0.50	60 M distance criterion
ECS166	-0.533773	52.092182	0.50	60 M distance criterion
ECS167	-0.527453	52.097637	0.50	60 M distance criterion
ECS168	-0.521179	52.103153	0.50	60 M distance criterion
ECS169	-0.514951	52.108715	0.50	60 M distance criterion
ECS170	-0.508771	52.114330	0.50	60 M distance criterion
ECS171	-0.502639	52.119991	0.50	60 M distance criterion
ECS172	-0.496554	52.125710	0.50	60 M distance criterion
ECS173	-0.490518	52.131474	0.50	60 M distance criterion
ECS174	-0.484530	52.137291	0.50	60 M distance criterion
ECS175	-0.478590	52.143154	0.50	60 M distance criterion
ECS176	-0.472700	52.149067	0.50	60 M distance criterion
ECS177	-0.466861	52.155029	0.50	60 M distance criterion
ECS178	-0.461071	52.161041	0.50	60 M distance criterion
ECS179	-0.455332	52.167095	0.50	60 M distance criterion
ECS180	-0.449644	52.173199	0.50	60 M distance criterion
ECS181	-0.444007	52.179352	0.50	60 M distance criterion
ECS182	-0.438422	52.185551	0.50	60 M distance criterion
ECS183	-0.432889	52.191799	0.50	60 M distance criterion
ECS184	-0.427410	52.198086	0.50	60 M distance criterion
ECS185	-0.421981	52.204426	0.50	60 M distance criterion
ECS186	-0.416607	52.210804	0.50	60 M distance criterion
ECS187	-0.411287	52.217224	0.50	60 M distance criterion
ECS188	-0.406020	52.223698	0.50	60 M distance criterion
ECS189	-0.400808	52.230206	0.50	60 M distance criterion
ECS190	-0.395651	52.236763	0.50	60 M distance criterion
ECS191	-0.390548	52.243362	0.50	60 M distance criterion
ECS192	-0.385503	52.249996	0.50	60 M distance criterion
ECS193	-0.380512	52.256680	0.50	60 M distance criterion
ECS194	-0.375578	52.263401	0.50	60 M distance criterion
ECS195	-0.370701	52.270161	0.50	60 M distance criterion
ECS196	-0.365881	52.276962	0.50	60 M distance criterion
ECS197	-0.361118	52.283806	0.50	60 M distance criterion
ECS198	-0.356412	52.290680	0.50	60 M distance criterion
ECS199	-0.351764	52.297604	0.50	60 M distance criterion
ECS200	-0.347173	52.304562	0.50	60 M distance criterion
ECS201	-0.342642	52.311558	0.50	60 M distance criterion
ECS202	-0.338170	52.318588	0.50	60 M distance criterion
ECS203	-0.333757	52.325657	0.50	60 M distance criterion



ECS204	-0.329403	52.332764	0.50	60 M distance criterion
ECS205	-0.325107	52.339909	0.50	60 M distance criterion
ECS206	-0.320873	52.347088	0.50	60 M distance criterion
ECS207	-0.316699	52.354294	0.50	60 M distance criterion
ECS208	-0.312586	52.361542	0.50	60 M distance criterion
ECS209	-0.308533	52.368824	0.50	60 M distance criterion
ECS210	-0.304542	52.376137	0.50	60 M distance criterion
ECS211	-0.300612	52.383480	0.50	60 M distance criterion
ECS212	-0.296745	52.390862	0.50	60 M distance criterion
ECS213	-0.292938	52.398273	0.50	60 M distance criterion
ECS214	-0.289194	52.405716	0.50	60 M distance criterion
ECS215	-0.285513	52.413189	0.50	60 M distance criterion
ECS216	-0.281895	52.420685	0.50	60 M distance criterion
ECS217	-0.278341	52.428219	0.50	60 M distance criterion
ECS218	-0.274848	52.435783	0.50	60 M distance criterion
ECS219	-0.271419	52.443371	0.50	60 M distance criterion
ECS220	-0.268055	52.450989	0.50	60 M distance criterion
ECS221	-0.264755	52.458633	0.50	60 M distance criterion
ECS222	-0.261518	52.466305	0.50	60 M distance criterion
ECS223	-0.258346	52.474007	0.50	60 M distance criterion
ECS224	-0.255239	52.481731	0.50	60 M distance criterion
ECS225	-0.252197	52.489483	0.50	60 M distance criterion
ECS226	-0.249219	52.497257	0.50	60 M distance criterion
ECS227	-0.246307	52.505058	0.50	60 M distance criterion
ECS228	-0.243460	52.512882	0.50	60 M distance criterion
ECS229	-0.240679	52.520729	0.50	60 M distance criterion
ECS230	-0.237965	52.528599	0.50	60 M distance criterion
ECS231	-0.235317	52.536491	0.50	60 M distance criterion
ECS232	-0.232735	52.544403	0.50	60 M distance criterion
ECS233	-0.230219	52.552338	0.50	60 M distance criterion
ECS234	-0.227770	52.560291	0.50	60 M distance criterion
ECS235	-0.225388	52.568264	0.50	60 M distance criterion
ECS236	-0.223073	52.576260	0.50	60 M distance criterion
ECS237	-0.220825	52.584274	0.50	60 M distance criterion
ECS238	-0.218644	52.592304	0.50	60 M distance criterion
ECS239	-0.216531	52.600353	0.50	60 M distance criterion
ECS240	-0.214485	52.608421	0.50	60 M distance criterion
ECS241	-0.212506	52.616505	0.50	60 M distance criterion
ECS242	-0.210596	52.624603	0.50	60 M distance criterion
ECS243	-0.208754	52.632721	0.50	60 M distance criterion
ECS244	-0.206980	52.640850	0.50	60 M distance criterion
ECS245	-0.205274	52.648991	0.50	60 M distance criterion
ECS246	-0.203637	52.657150	0.50	60 M distance criterion





ECS247	-0.202068	52.665318	0.50	60 M distance criterion
ECS248	-0.200567	52.673504	0.50	60 M distance criterion
ECS249	-0.199135	52.681702	0.50	60 M distance criterion
ECS250	-0.197773	52.689907	0.50	60 M distance criterion
ECS251	-0.196479	52.698124	0.50	60 M distance criterion
ECS252	-0.195254	52.706352	0.50	60 M distance criterion
ECS253	-0.194098	52.714592	0.50	60 M distance criterion
ECS254	-0.193011	52.722839	0.50	60 M distance criterion
ECS255	-0.191994	52.731094	0.50	60 M distance criterion
ECS256	-0.191045	52.739357	0.50	60 M distance criterion
ECS257	-0.190166	52.747631	0.50	60 M distance criterion
ECS258	-0.189357	52.755909	0.50	60 M distance criterion
ECS259	-0.188617	52.764198	0.50	60 M distance criterion
ECS260	-0.187946	52.772488	0.50	60 M distance criterion
ECS261	-0.187345	52.780785	0.50	60 M distance criterion
ECS262	-0.186814	52.789085	0.50	60 M distance criterion
ECS263	-0.186352	52.797390	0.50	60 M distance criterion
ECS264	-0.185960	52.805698	0.50	60 M distance criterion
ECS265	-0.185638	52.814014	0.50	60 M distance criterion
ECS266	-0.185385	52.822327	0.50	60 M distance criterion
ECS267	-0.185202	52.830647	0.50	60 M distance criterion
ECS268	-0.185089	52.838963	0.50	60 M distance criterion
ECS269	-0.185046	52.847282	0.50	60 M distance criterion
ECS270	-0.185072	52.855598	0.50	60 M distance criterion
ECS271	-0.185168	52.863918	0.50	60 M distance criterion
ECS272	-0.185334	52.872238	0.50	60 M distance criterion
ECS273	-0.185570	52.880550	0.50	60 M distance criterion
ECS274	-0.185875	52.888866	0.50	60 M distance criterion
ECS275	-0.186251	52.897175	0.50	60 M distance criterion
ECS276	-0.186695	52.905479	0.50	60 M distance criterion
ECS277	-0.187210	52.913780	0.50	60 M distance criterion
ECS278	-0.187795	52.922081	0.50	60 M distance criterion
ECS279	-0.188448	52.930370	0.50	60 M distance criterion
ECS280	-0.189171	52.938660	0.50	60 M distance criterion
ECS281	-0.189964	52.946941	0.50	60 M distance criterion
ECS282	-0.190826	52.955215	0.50	60 M distance criterion
ECS283	-0.191758	52.963482	0.50	60 M distance criterion
ECS284	-0.192759	52.971745	0.50	60 M distance criterion
ECS285	-0.193829	52.979996	0.50	60 M distance criterion
ECS286	-0.194969	52.988235	0.50	60 M distance criterion
ECS287	-0.196177	52.996471	0.50	60 M distance criterion
ECS288	-0.197454	53.004688	0.50	60 M distance criterion
ECS289	-0.198801	53.012901	0.50	60 M distance criterion



ECS290	-0.200217	53.021103	0.50	60 M distance criterion
ECS291	-0.201701	53.029289	0.50	60 M distance criterion
ECS292	-0.203253	53.037464	0.50	60 M distance criterion
ECS293	-0.204874	53.045624	0.50	60 M distance criterion
ECS294	-0.206564	53.053772	0.50	60 M distance criterion
ECS295	-0.208321	53.061909	0.50	60 M distance criterion
ECS296	-0.210147	53.070023	0.50	60 M distance criterion
ECS297	-0.212041	53.078125	0.50	60 M distance criterion
ECS298	-0.214003	53.086216	0.50	60 M distance criterion
ECS299	-0.216033	53.094288	0.50	60 M distance criterion
ECS300	-0.218130	53.102341	0.50	60 M distance criterion
ECS301	-0.220295	53.110374	0.50	60 M distance criterion
ECS302	-0.222527	53.118393	0.50	60 M distance criterion
ECS303	-0.224827	53.126392	0.50	60 M distance criterion
ECS304	-0.227192	53.134369	0.50	60 M distance criterion
ECS305	-0.229625	53.142330	0.50	60 M distance criterion
ECS306	-0.232125	53.150269	0.50	60 M distance criterion
ECS307	-0.234691	53.158188	0.50	60 M distance criterion
ECS308	-0.237324	53.166084	0.50	60 M distance criterion
ECS309	-0.240022	53.173958	0.50	60 M distance criterion
ECS310	-0.242787	53.181808	0.50	60 M distance criterion
ECS311	-0.245617	53.189640	0.50	60 M distance criterion
ECS312	-0.248513	53.197445	0.50	60 M distance criterion
ECS313	-0.251474	53.205223	0.50	60 M distance criterion
ECS314	-0.254501	53.212982	0.50	60 M distance criterion
ECS315	-0.257592	53.220711	0.50	60 M distance criterion
ECS316	-0.260748	53.228413	0.50	60 M distance criterion
ECS317	-0.263969	53.236095	0.50	60 M distance criterion
ECS318	-0.267254	53.243748	0.50	60 M distance criterion
ECS319	-0.270603	53.251377	0.50	60 M distance criterion
ECS320	-0.274017	53.258972	0.50	60 M distance criterion
ECS321	-0.277494	53.266541	0.50	60 M distance criterion
ECS322	-0.281033	53.274075	0.50	60 M distance criterion
ECS323	-0.284636	53.281586	0.50	60 M distance criterion
ECS324	-0.288301	53.289062	0.50	60 M distance criterion
ECS325	-0.292030	53.296513	0.50	60 M distance criterion
ECS326	-0.295820	53.303932	0.50	60 M distance criterion
ECS327	-0.299674	53.311317	0.50	60 M distance criterion
ECS328	-0.303588	53.318668	0.50	60 M distance criterion
ECS329	-0.307564	53.325989	0.50	60 M distance criterion
ECS330	-0.311601	53.333275	0.50	60 M distance criterion
ECS331	-0.315699	53.340530	0.50	60 M distance criterion
ECS332	-0.319859	53.347752	0.50	60 M distance criterion



ECS333	-0.324078	53.354939	0.50	60 M distance criterion
ECS334	-0.328357	53.362083	0.50	60 M distance criterion
ECS335	-0.332696	53.369198	0.50	60 M distance criterion
ECS336	-0.337095	53.376278	0.50	60 M distance criterion
ECS337	-0.341552	53.383316	0.50	60 M distance criterion
ECS338	-0.346068	53.390316	0.50	60 M distance criterion
ECS339	-0.350643	53.397285	0.50	60 M distance criterion
ECS340	-0.355278	53.404213	0.50	60 M distance criterion
ECS341	-0.359969	53.411106	0.50	60 M distance criterion
ECS342	-0.364719	53.417953	0.50	60 M distance criterion
ECS343	-0.369525	53.424767	0.50	60 M distance criterion
ECS344	-0.374390	53.431541	0.50	60 M distance criterion
ECS345	-0.379311	53.438271	0.50	60 M distance criterion
ECS346	-0.384288	53.444962	0.50	60 M distance criterion
ECS347	-0.389320	53.451611	0.50	60 M distance criterion
ECS348	-0.394409	53.458218	0.50	60 M distance criterion
ECS349	-0.399552	53.464783	0.50	60 M distance criterion
ECS350	-0.404751	53.471306	0.50	60 M distance criterion
ECS351	-0.410004	53.477783	0.50	60 M distance criterion
ECS352	-0.415311	53.484219	0.50	60 M distance criterion
ECS353	-0.420671	53.490604	0.50	60 M distance criterion
ECS354	-0.426086	53.496952	0.50	60 M distance criterion
ECS355	-0.431554	53.503254	0.50	60 M distance criterion
ECS356	-0.437075	53.509510	0.50	60 M distance criterion
ECS357	-0.442647	53.515724	0.50	60 M distance criterion
ECS358	-0.448273	53.521885	0.50	60 M distance criterion
ECS359	-0.453949	53.528004	0.50	60 M distance criterion
ECS360	-0.459676	53.534077	0.50	60 M distance criterion
ECS361	-0.465455	53.540092	0.50	60 M distance criterion
ECS362	-0.471282	53.546066	0.50	60 M distance criterion
ECS363	-0.477159	53.551991	0.50	60 M distance criterion
ECS364	-0.483088	53.557873	0.50	60 M distance criterion
ECS365	-0.489063	53.563698	0.50	60 M distance criterion
ECS366	-0.495088	53.569473	0.50	60 M distance criterion
ECS367	-0.501161	53.575203	0.50	60 M distance criterion
ECS368	-0.507283	53.580883	0.50	60 M distance criterion
ECS369	-0.513451	53.586506	0.50	60 M distance criterion
ECS370	-0.519668	53.592083	0.50	60 M distance criterion
ECS371	-0.525929	53.597603	0.50	60 M distance criterion
ECS372	-0.532237	53.603073	0.50	60 M distance criterion
ECS373	-0.538591	53.608498	0.50	60 M distance criterion
ECS374	-0.544991	53.613865	0.50	60 M distance criterion
ECS375	-0.551436	53.619179	0.50	60 M distance criterion



ECS376	-0.557925	53.624435	0.50	60 M distance criterion
ECS377	-0.564456	53.629642	0.50	60 M distance criterion
ECS378	-0.571032	53.634796	0.50	60 M distance criterion
ECS379	-0.577651	53.639893	0.50	60 M distance criterion
ECS380	-0.584313	53.644932	0.50	60 M distance criterion
ECS381	-0.591016	53.649921	0.50	60 M distance criterion
ECS382	-0.597762	53.654850	0.50	60 M distance criterion
ECS383	-0.604548	53.659729	0.50	60 M distance criterion
ECS384	-0.611374	53.664547	0.50	60 M distance criterion
ECS385	-0.618241	53.669308	0.50	60 M distance criterion
ECS386	-0.625147	53.674011	0.50	60 M distance criterion
ECS387	-0.632093	53.678658	0.50	60 M distance criterion
ECS388	-0.639077	53.683250	0.50	60 M distance criterion
ECS389	-0.646101	53.687782	0.50	60 M distance criterion
ECS390	-0.653162	53.692257	0.50	60 M distance criterion
ECS391	-0.660260	53.696671	0.50	60 M distance criterion
ECS392	-0.667395	53.701027	0.50	60 M distance criterion
ECS393	-0.674567	53.705326	0.50	60 M distance criterion
ECS394	-0.681774	53.709564	0.50	60 M distance criterion
ECS395	-0.689016	53.713741	0.50	60 M distance criterion
ECS396	-0.696294	53.717861	0.50	60 M distance criterion
ECS397	-0.703605	53.721916	0.50	60 M distance criterion
ECS398	-0.710923	53.725899	0.50	60 M distance criterion / Baseline + 200M



**ANNEX 2**

**Table listing the points defining the outer limits of the extended continental shelf of the Republic of Seychelles in the Northern Plateau Region (Degrees, Minutes, and Seconds)**

**SEY-ES-DOC-ANNEX 1**

Point_ID	Latitude ((deg°min´sec"))	Longitude ((deg°min´sec"))	Distance (M)	Article 76 Criterion
ECS 1	1° 48' 20".34 S	52° 3' 32".760 E	-	60 M distance criterion / Baseline +200M
ECS2	1° 48' 8".244 S	52° 3' 23".400 E	0.5	60 M distance criterion
ECS3	1° 47' 44".268 S	52° 3' 5".040 E	0.5	60 M distance criterion
ECS4	1° 47' 20".148 S	52° 2' 47".400 E	0.5	60 M distance criterion
ECS5	1° 46' 55".848 S	52° 2' 29".400 E	0.5	60 M distance criterion
ECS6	1° 46' 31".404 S	52° 2' 12".120 E	0.5	60 M distance criterion
ECS7	1° 46' 6".816 S	52° 1' 54".480 E	0.5	60 M distance criterion
ECS8	1° 45' 42".120 S	52° 1' 37".560 E	0.5	60 M distance criterion
ECS9	1° 45' 17".244 S	52° 1' 20".640 E	0.5	60 M distance criterion
ECS10	1° 44' 52".224 S	52° 1' 3".720 E	0.5	60 M distance criterion
ECS11	1° 44' 27".096 S	52° 0' 47".160 E	0.5	60 M distance criterion
ECS12	1° 44' 1".788 S	52° 0' 30".960 E	0.5	60 M distance criterion
ECS13	1° 43' 36".372 S	52° 0' 14".760 E	0.5	60 M distance criterion
ECS14	1° 43' 10".812 S	51° 59' 58".920 E	0.5	60 M distance criterion
ECS15	1° 42' 45".108 S	51° 59' 43".440 E	0.5	60 M distance criterion
ECS16	1° 42' 19".296 S	51° 59' 27".960 E	0.5	60 M distance criterion
ECS17	1° 41' 53".34 S	51° 59' 12".480 E	0.5	60 M distance criterion
ECS18	1° 41' 27".276 S	51° 58' 57".360 E	0.5	60 M distance criterion
ECS19	1° 41' 1".068 S	51° 58' 42".600 E	0.5	60 M distance criterion
ECS20	1° 40' 34".752 S	51° 58' 28".200 E	0.5	60 M distance criterion
ECS21	1° 40' 8".292 S	51° 58' 13".800 E	0.5	60 M distance criterion
ECS22	1° 39' 41".724 S	51° 57' 59".400 E	0.5	60 M distance criterion
ECS23	1° 39' 15".048 S	51° 57' 45".720 E	0.5	60 M distance criterion
ECS24	1° 38' 48".264 S	51° 57' 32".040E	0.5	60 M distance criterion
ECS25	1° 38' 21".336 S	51° 57' 18".360 E	0.5	60 M distance criterion
ECS26	1° 37' 54".3 S	51° 57' 5".040 E	0.5	60 M distance criterion



ECS27	1° 37' 27".192 S	51° 56' 52".080 E	0.5	60 M distance criterion
ECS28	1° 36' 59".94 S	51° 56' 39".120 E	0.5	60 M distance criterion
ECS29	1° 36' 32".58 S	51° 56' 26".520 E	0.5	60 M distance criterion
ECS30	1° 36' 5".112 S	51° 56' 14".280 E	0.5	60 M distance criterion
ECS31	1° 35' 37".572 S	51° 56' 2".040 E	0.5	60 M distance criterion
ECS32	1° 35' 9".924 S	51° 55' 50".160 E	0.5	60 M distance criterion
ECS33	1° 34' 42".168 S	51° 55' 38".640 E	0.5	60 M distance criterion
ECS34	1° 34' 14".304 S	51° 55' 27".120 E	0.5	60 M distance criterion
ECS35	1° 33' 46".332 S	51° 55' 15".960 E	0.5	60 M distance criterion
ECS36	1° 33' 18".288 S	51° 55' 4".800 E	0.5	60 M distance criterion
ECS37	1° 32' 50".172 S	51° 54' 54".000 E	0.5	60 M distance criterion
ECS38	1° 32' 21".948 S	51° 54' 43".560 E	0.5	60 M distance criterion
ECS39	1° 31' 53".616 S	51° 54' 33".120 E	0.5	60 M distance criterion
ECS40	1° 31' 25".212 S	51° 54' 23".400 E	0.5	60 M distance criterion
ECS41	1° 30' 56".736 S	51° 54' 13".320 E	0.5	60 M distance criterion
ECS42	1° 30' 28".188 S	51° 54' 3".960 E	0.5	60 M distance criterion
ECS43	1° 29' 59".532 S	51° 53' 54".600 E	0.5	60 M distance criterion
ECS44	1° 29' 30".84 S	51° 53' 45".240 E	0.5	60 M distance criterion
ECS45	1° 29' 2".04 S	51° 53' 36".600 E	0.5	60 M distance criterion
ECS46	1° 28' 33".168 S	51° 53' 27".960 E	0.5	60 M distance criterion
ECS47	1° 28' 4".224 S	51° 53' 19".320 E	0.5	60 M distance criterion
ECS48	1° 27' 35".208 S	51° 53' 11".400 E	0.5	60 M distance criterion
ECS49	1° 27' 6".12 S	51° 53' 3".480 E	0.5	60 M distance criterion
ECS50	1° 26' 36".996 S	51° 52' 55".560 E	0.5	60 M distance criterion
ECS51	1° 26' 7".8 S	51° 52' 48".360 E	0.5	60 M distance criterion
ECS52	1° 25' 38".532 S	51° 52' 41".160 E	0.5	60 M distance criterion
ECS53	1° 25' 9".192 S	51° 52' 33".960 E	0.5	60 M distance criterion
ECS54	1° 24' 39".816 S	51° 52' 27".480 E	0.5	60 M distance criterion
ECS55	1° 24' 10".368 S	51° 52' 21".000 E	0.5	60 M distance criterion
ECS56	1° 23' 40".884 S	51° 52' 14".880 E	0.5	60 M distance criterion
ECS57	1° 23' 11".328 S	51° 52' 8".760 E	0.5	60 M distance criterion
ECS58	1° 22' 41".7306 S	51° 52' 3".000 E	0.5	60 M distance criterion
ECS59	1° 22' 12".108 S	51° 51' 57".600 E	0.5	60 M distance criterion
ECS60	1° 21' 42".408 S	51° 51' 52".200 E	0.5	60 M distance criterion
ECS61	1° 21' 12".672 S	51° 51' 47".160 E	0.5	60 M distance criterion
ECS62	1° 20' 42".936 S	51° 51' 42".480 E	0.5	60 M distance criterion
ECS63	1° 20' 13".128 S	51° 51' 38".160 E	0.5	60 M distance criterion



ECS64	1° 19' 43".284 S	51° 51' 33".840 E	0.5	60 M distance criterion
ECS65	1° 19' 13".404 S	51° 51' 29".880 E	0.5	60 M distance criterion
ECS66	1° 18' 43".488 S	51° 51' 25".920 E	0.5	60 M distance criterion
ECS67	1° 18' 13".536 S	51° 51' 22".680 E	0.5	60 M distance criterion
ECS68	1° 17' 43".584 S	51° 51' 19".440 E	0.5	60 M distance criterion
ECS69	1° 17' 13".560 S	51° 51' 16".200 E	0.5	60 M distance criterion
ECS70	1° 16' 43".572 S	51° 51' 13".680 E	0.5	60 M distance criterion
ECS71	1° 16' 13".512 S	51° 51' 11".160 E	0.5	60 M distance criterion
ECS72	1° 15' 43".452 S	51° 51' 8".640 E	0.5	60 M distance criterion
ECS73	1° 15' 13".356 S	51° 51' 6".840 E	0.5	60 M distance criterion
ECS74	1° 14' 43".296 S	51° 51' 5".040 E	0.5	60 M distance criterion
ECS75	1° 14' 13".164 S	51° 51' 3".600 E	0.5	60 M distance criterion
ECS76	1° 13' 43".032 S	51° 51' 2".160 E	0.5	60 M distance criterion
ECS77	1° 13' 12".900 S	51° 51' 1".080 E	0.5	60 M distance criterion
ECS78	1° 12' 42".768 S	51° 51' 0".360 E	0.5	60 M distance criterion
ECS79	1° 12' 12".636 S	51° 50' 59".831 E	0.5	60 M distance criterion
ECS80	1° 11' 42".504 S	51° 50' 59".640 E	0.5	60 M distance criterion
ECS81	1° 11' 12".336 S	51° 50' 59".640 E	0.5	60 M distance criterion
ECS82	1° 10' 42".204 S	51° 50' 59".640 E	0.5	60 M distance criterion
ECS83	1° 10' 12".036 S	51° 51' 0".360 E	0.5	60 M distance criterion
ECS84	1° 9' 41".904 S	51° 51' 1".080 E	0.5	60 M distance criterion
ECS85	1° 9' 11".772 S	51° 51' 1".800 E	0.5	60 M distance criterion
ECS86	1° 8' 41".640 S	51° 51' 3".240 E	0.5	60 M distance criterion
ECS87	1° 8' 11".544 S	51° 51' 4".680 E	0.5	60 M distance criterion
ECS88	1° 7' 41".448 S	51° 51' 6".480 E	0.5	60 M distance criterion
ECS89	1° 7' 11".352 S	51° 51' 8".280 E	0.5	60 M distance criterion
ECS90	1° 6' 41".292 S	51° 51' 10".440 E	0.5	60 M distance criterion
ECS91	1° 6' 11".232 S	51° 51' 12".960 E	0.5	60 M distance criterion
ECS92	1° 5' 41".208 S	51° 51' 15".840 E	0.5	60 M distance criterion
ECS93	1° 5' 11".220 S	51° 51' 18".720 E	0.5	60 M distance criterion
ECS94	1° 4' 41".232 S	51° 51' 21".960 E	0.5	60 M distance criterion
ECS95	1° 4' 11".316 S	51° 51' 25".560 E	0.5	60 M distance criterion
ECS96	1° 3' 41".400 S	51° 51' 29".160 E	0.5	60 M distance criterion
ECS97	1° 3' 11".520 S	51° 51' 33".120 E	0.5	60 M distance criterion
ECS98	1° 2' 41".640 S	51° 51' 37".440 E	0.5	60 M distance criterion
ECS99	1° 2' 11".832 S	51° 51' 41".760 E	0.5	60 M distance criterion
ECS100	1° 1' 42".060 S	51° 51' 46".440 E	0.5	60 M distance criterion





ECS101	1° 1' 12".324 S	51°51' 51".480 E	0.5	60 M distance criterion
ECS102	1° 0' 42".624 S	51° 51' 56".520 E	0.5	60 M distance criterion
ECS103	1° 0' 12".996 S	51° 52' 1".920 E	0.5	60 M distance criterion
ECS104	0° 59' 43".386 S	51° 52' 7".680 E	0.5	60 M distance criterion
ECS105	0° 59' 13".8336 S	51° 52' 13".440 E	0.5	60 M distance criterion
ECS106	0° 58' 44".3316 S	51° 52' 19".920 E	0.5	60 M distance criterion
ECS107	0° 58' 14".8836 S	51° 52' 26".040 E	0.5	60 M distance criterion
ECS108	0° 57' 45".486 S	51° 52' 32".880 E	0.5	60 M distance criterion
ECS109	0° 57' 16".1496 S	51° 52' 39".720 E	0.5	60 M distance criterion
ECS110	0° 56' 46".8708 S	51° 52' 46".920 E	0.5	60 M distance criterion
ECS111	0° 56' 17".6532 S	51° 52' 54".120 E	0.5	60 M distance criterion
ECS112	0° 55' 48".5004 S	51° 53' 2".040 E	0.5	60 M distance criterion
ECS113	0° 55' 19".4088 S	51° 53' 9".600 E	0.5	60 M distance criterion
ECS114	0° 54' 50".3892 S	51° 53' 17".880 E	0.5	60 M distance criterion
ECS115	0° 54' 21".4344 S	51° 53' 26".160 E	0.5	60 M distance criterion
ECS116	0° 53' 52".5552 S	51° 53' 34".800 E	0.5	60 M distance criterion
ECS117	0° 53' 23".748 S	51° 53' 43".800 E	0.5	60 M distance criterion
ECS118	0° 52' 55".0092 S	51° 53' 52".800 E	0.5	60 M distance criterion
ECS119	0° 52' 26".3532 S	51° 54' 2".160 E	0.5	60 M distance criterion
ECS120	0° 51' 57".7764 S	51° 54' 11".520 E	0.5	60 M distance criterion
ECS121	0° 51' 29".2824 S	51° 54' 21".240 E	0.5	60 M distance criterion
ECS122	0° 51' 0".864 S	51° 54' 31".320 E	0.5	60 M distance criterion
ECS123	0° 50' 32".5356 S	51° 54' 41".760 E	0.5	60 M distance criterion
ECS124	0° 50' 4".2936 S	51° 54' 52".200E	0.5	60 M distance criterion
ECS125	0° 49' 36".138 S	51° 55' 2".640 E	0.5	60 M distance criterion
ECS126	0° 49' 8".076 S	51° 55' 13".800 E	0.5	60 M distance criterion
ECS127	0° 48' 40".1076 S	51° 55' 24".960 E	0.5	60 M distance criterion
ECS128	0° 48' 12".2292 S	51° 55' 36".120 E	0.5	60 M distance criterion
ECS129	0° 47' 44".4516 S	51° 55' 48".000 E	0.5	60 M distance criterion
ECS130	0° 47' 16".7712 S	51° 55' 59".880 E	0.5	60 M distance criterion
ECS131	0° 46' 49".1952 S	51° 56' 11".760 E	0.5	60 M distance criterion
ECS132	0° 46' 21".7164 S	51° 56' 24".360 E	0.5	60 M distance criterion
ECS133	0° 45' 54".342 S	51° 56' 36".960 E	0.5	60 M distance criterion
ECS134	0° 45' 27".0792 S	51° 56' 49".560 E	0.5	60 M distance criterion
ECS135	0° 44' 59".9208 S	51° 57' 2".520 E	0.5	60 M distance criterion
ECS136	0° 44' 32".874 S	51° 57' 15".840 E	0.5	60 M distance criterion
ECS137	0° 44' 5".9388 S	51° 57' 29".160 E	0.5	60 M distance criterion





ECS138	0° 43' 39".1152 S	51° 57' 42".840 E	0.5	60 M distance criterion
ECS139	0° 43' 12".4068 S	51° 57' 56".880 E	0.5	60 M distance criterion
ECS140	0° 42' 45".8172 S	51° 58' 10".920 E	0.5	60 M distance criterion
ECS141	0° 42' 19".3536 S	51° 58' 25".320 E	0.5	60 M distance criterion
ECS142	0° 41' 53".0016 S	51° 58' 39".720 E	0.5	60 M distance criterion
ECS143	0° 41' 26".7756 S	51° 58' 54".480 E	0.5	60 M distance criterion
ECS144	0° 41' 0".6756 S	51° 59' 9".600 E	0.5	60 M distance criterion
ECS145	0° 40' 34".7016 S	51° 59' 24".720 E	0.5	60 M distance criterion
ECS146	0° 40' 8".8536 S	51° 59' 40".200 E	0.5	60 M distance criterion
ECS147	0° 39' 43".1352 S	51° 59' 55".680 E	0.5	60 M distance criterion
ECS148	0° 39' 17".5536 S	52° 0' 11".520 E	0.5	60 M distance criterion
ECS149	0° 38' 52".1016 S	52° 0' 27".720 E	0.5	60 M distance criterion
ECS150	0° 38' 26".7864 S	52° 0' 43".920 E	0.5	60 M distance criterion
ECS151	0° 38' 1".6116 S	52° 1' 0".480 E	0.5	60 M distance criterion
ECS152	0° 37' 36".5736 S	52° 1' 17".040 E	0.5	60 M distance criterion
ECS153	0° 37' 11".676 S	52° 1' 33".960 E	0.5	60 M distance criterion
ECS154	0° 36' 46".9188 S	52° 1' 51".240 E	0.5	60 M distance criterion
ECS155	0° 36' 22".3056 S	52° 2' 8".520 E	0.5	60 M distance criterion
ECS156	0° 35' 57".840 S	52° 2' 25".800 E	0.5	60 M distance criterion
ECS157	0° 35' 33".522 S	52° 2' 43".800 E	0.5	60 M distance criterion
ECS158	0° 35' 9".3552 S	52° 3' 1".440 E	0.5	60 M distance criterion
ECS159	0° 34' 45".3396 S	52° 3' 19".800 E	0.5	60 M distance criterion
ECS160	0° 34' 21".4788 S	52° 3' 37".800 E	0.5	60 M distance criterion
ECS161	0° 33' 57".7656 S	52° 3' 56".520 E	0.5	60 M distance criterion
ECS162	0° 33' 34".2072 S	52° 4' 15".240 E	0.5	60 M distance criterion
ECS163	0° 33' 10".8072 S	52° 4' 33".960 E	0.5	60 M distance criterion
ECS164	0° 32' 47".5728 S	52° 4' 53".040 E	0.5	60 M distance criterion
ECS165	0° 32' 24".4968 S	52° 5' 12".480 E	0.5	60 M distance criterion
ECS166	0° 32' 1".5828 S	52° 5' 31".920 E	0.5	60 M distance criterion
ECS167	0° 31' 38".8308 S	52° 5' 51".360 E	0.5	60 M distance criterion
ECS168	0° 31' 16".2444 S	52° 6' 11".520 E	0.5	60 M distance criterion
ECS169	0° 30' 53".8236 S	52° 6' 31".320 E	0.5	60 M distance criterion
ECS170	0° 30' 31".5756 S	52° 6' 51".480 E	0.5	60 M distance criterion
ECS171	0° 30' 9".5004 S	52° 7' 12".000 E	0.5	60 M distance criterion
ECS172	0° 29' 47".5944 S	52° 7' 32".520 E	0.5	60 M distance criterion
ECS173	0° 29' 25".8648 S	52° 7' 53".400 E	0.5	60 M distance criterion
ECS174	0° 29' 4".308 S	52° 8' 14".280 E	0.5	60 M distance criterion



ECS175	0° 28' 42".924 S	52° 8' 35".520 E	0.5	60 M distance criterion
ECS176	0° 28' 21".720 S	52° 8' 56".760 E	0.5	60 M distance criterion
ECS177	0° 28' 0".6996 S	52° 9' 18".000 E	0.5	60 M distance criterion
ECS178	0° 27' 39".8556 S	52° 9' 39".600 E	0.5	60 M distance criterion
ECS179	0° 27' 19".1952 S	52° 10' 1".560 E	0.5	60 M distance criterion
ECS180	0° 26' 58".7184 S	52° 10' 23".520 E	0.5	60 M distance criterion
ECS181	0° 26' 38".4252 S	52° 10' 45".840 E	0.5	60 M distance criterion
ECS182	0° 26' 18".3192 S	52° 11' 8".160 E	0.5	60 M distance criterion
ECS183	0° 25' 58".4004 S	52° 11' 30".480 E	0.5	60 M distance criterion
ECS184	0° 25' 38".676 S	52° 11' 53".160 E	0.5	60 M distance criterion
ECS185	0° 25' 19".1316 S	52° 1' 15".840 E	0.5	60 M distance criterion
ECS186	0° 24' 59".7852 S	52° 12' 38".880 E	0.5	60 M distance criterion
ECS187	0° 24' 40".6332 S	52° 13' 1".920 E	0.5	60 M distance criterion
ECS188	0° 24' 21".672 S	52° 13' 25".320 E	0.5	60 M distance criterion
ECS189	0° 24' 2".9088 S	52° 13' 48".720 E	0.5	60 M distance criterion
ECS190	0° 23' 44".3436 S	52° 14' 12".480 E	0.5	60 M distance criterion
ECS191	0° 23' 25".9728 S	52° 14' 36".240 E	0.5	60 M distance criterion
ECS192	0° 23' 7".8108 S	52° 15' 0".000 E	0.5	60 M distance criterion
ECS193	0° 22' 49".8432 S	52° 15' 24".120 E	0.5	60 M distance criterion
ECS194	0° 22' 32".0808 S	52° 15' 48".240 E	0.5	60 M distance criterion
ECS195	0° 22' 14".5236 S	52° 16' 12".720 E	0.5	60 M distance criterion
ECS196	0° 21' 57".1716 S	52° 16' 37".200 E	0.5	60 M distance criterion
ECS197	0° 21' 40".0248 S	52° 17' 1".680 E	0.5	60 M distance criterion
ECS198	0° 21' 23".0832 S	52° 17' 26".520 E	0.5	60 M distance criterion
ECS199	0° 21' 6".3504 S	52° 17' 51".360 E	0.5	60 M distance criterion
ECS200	0° 20' 49".8228 S	52° 18' 16".560 E	0.5	60 M distance criterion
ECS201	0° 20' 33".5112 S	52° 18' 41".760 E	0.5	60 M distance criterion
ECS202	0° 20' 17".412 S	52° 19' 6".960 E	0.5	60 M distance criterion
ECS203	0° 20' 1".5252 S	52° 19' 32".520 E	0.5	60 M distance criterion
ECS204	0° 19' 45".8508 S	52° 19' 58".080 E	0.5	60 M distance criterion
ECS205	0° 19' 30".3852 S	52° 20' 23".640 E	0.5	60 M distance criterion
ECS206	0° 19' 15".1428 S	52° 20' 49".560 E	0.5	60 M distance criterion
ECS207	0° 19' 0".1164 S	52° 21' 15".480 E	0.5	60 M distance criterion
ECS208	0° 18' 45".3096 S	52° 21' 41".400 E	0.5	60 M distance criterion
ECS209	0° 18' 30".7188 S	52° 22' 7".680 E	0.5	60 M distance criterion
ECS210	0° 18' 16".3512 S	52° 22' 33".960 E	0.5	60 M distance criterion
ECS211	0° 18' 2".2032 S	52° 23' 0".600 E	0.5	60 M distance criterion



ECS212	0° 17' 48".282 S	52° 23' 27".240 E	0.5	60 M distance criterion
ECS213	0° 17' 34".5768 S	52° 23' 53".880 E	0.5	60 M distance criterion
ECS214	0° 17' 21".0984 S	52° 24' 20".520 E	0.5	60 M distance criterion
ECS215	0° 17' 7".8468 S	52° 24' 47".520 E	0.5	60 M distance criterion
ECS216	0° 16' 54".822 S	52° 25' 14".520 E	0.5	60 M distance criterion
ECS217	0° 16' 42".0276 S	52° 25' 41".520 E	0.5	60 M distance criterion
ECS218	0° 16' 29".4528 S	52° 26' 8".880 E	0.5	60 M distance criterion
ECS219	0° 16' 17".1084 S	52° 26' 36".240 E	0.5	60 M distance criterion
ECS220	0° 16' 4".998 S	52° 27' 3".600 E	0.5	60 M distance criterion
ECS221	0° 15' 53".118 S	52° 27' 30".960 E	0.5	60 M distance criterion
ECS222	0° 15' 41".4648 S	52° 27' 58".680 E	0.5	60 M distance criterion
ECS223	0° 15' 30".0456 S	52° 28' 26".400 E	0.5	60 M distance criterion
ECS224	0° 15' 18".8604 S	52° 28' 54".120 E	0.5	60 M distance criterion
ECS225	0° 15' 7".9092 S	52° 29' 22".200 E	0.5	60 M distance criterion
ECS226	0° 14' 57".1884 S	52° 29' 50".280 E	0.5	60 M distance criterion
ECS227	0° 14' 46".7052 S	52° 30' 18".360 E	0.5	60 M distance criterion
ECS228	0° 14' 36".456 S	52° 30' 46".440 E	0.5	60 M distance criterion
ECS229	0° 14' 26".4444 S	52° 31' 14".520 E	0.5	60 M distance criterion
ECS230	0° 14' 16".674 S	52° 31' 42".960 E	0.5	60 M distance criterion
ECS231	0° 14' 7".1412 S	52° 32' 11".400 E	0.5	60 M distance criterion
ECS232	0° 13' 57".846 S	52° 32' 39".840 E	0.5	60 M distance criterion
ECS233	0° 13' 48".7884 S	52° 33' 8".280 E	0.5	60 M distance criterion
ECS234	0° 13' 39".972 S	52° 33' 37".080 E	0.5	60 M distance criterion
ECS235	0° 13' 31".3968 S	52° 34' 5".880 E	0.5	60 M distance criterion
ECS236	0° 13' 23".0628 S	52° 34' 34".680 E	0.5	60 M distance criterion
ECS237	0° 13' 14".970 S	52° 35' 3".480 E	0.5	60 M distance criterion
ECS238	0° 13' 7".1184 S	52° 35' 32".280 E	0.5	60 M distance criterion
ECS239	0° 12' 59".5116 S	52° 36' 1".440 E	0.5	60 M distance criterion
ECS240	0° 12' 52".146 S	52° 36' 30".240 E	0.5	60 M distance criterion
ECS241	0° 12' 45".0216 S	52° 36' 59".400 E	0.5	60 M distance criterion
ECS242	0° 12' 38".1456 S	52° 37' 28".560 E	0.5	60 M distance criterion
ECS243	0° 12' 31".5144 S	52° 37' 57".720 E	0.5	60 M distance criterion
ECS244	0° 12' 25".128 S	52° 38' 27".240 E	0.5	60 M distance criterion
ECS245	0° 12' 18".9864 S	52° 38' 56".400 E	0.5	60 M distance criterion
ECS246	0° 12' 13".0932 S	52° 39' 25".920 E	0.5	60 M distance criterion
ECS247	0° 12' 7".4448 S	52° 39' 55".080 E	0.5	60 M distance criterion
ECS248	0° 12' 2".0412 S	52° 40' 24".600 E	0.5	60 M distance criterion



ECS249	0° 11' 56".886 S	52° 40' 54".120 E	0.5	60 M distance criterion
ECS250	0° 11' 51".9828 S	52° 41' 23".640 E	0.5	60 M distance criterion
ECS251	0° 11' 47".3244 S	52° 41' 53".160 E	0.5	60 M distance criterion
ECS252	0° 11' 42".9144 S	52° 42' 23".040 E	0.5	60 M distance criterion
ECS253	0° 11' 38".7528 S	52° 42' 52".560 E	0.5	60 M distance criterion
ECS254	0° 11' 34".8396 S	52° 43' 22".080 E	0.5	60 M distance criterion
ECS255	0° 11' 31".1784 S	52° 43' 51".960 E	0.5	60 M distance criterion
ECS256	0° 11' 27".762 S	52° 44' 21".840 E	0.5	60 M distance criterion
ECS257	0° 11' 24".5976 S	52° 44' 51".360 E	0.5	60 M distance criterion
ECS258	0° 11' 21".6852 S	52° 45' 21".240 E	0.5	60 M distance criterion
ECS259	0° 11' 19".0212 S	52° 45' 51".120 E	0.5	60 M distance criterion
ECS260	0° 11' 16".6056 S	52° 46' 21".000 E	0.5	60 M distance criterion
ECS261	0° 11' 14".442 S	52° 46' 50".880 E	0.5	60 M distance criterion
ECS262	0° 11' 12".5304 S	52° 47' 20".760 E	0.5	60 M distance criterion
ECS263	0° 11' 10".8672 S	52° 47' 50".640 E	0.5	60 M distance criterion
ECS264	0° 11' 9".456 S	52° 48' 20".520 E	0.5	60 M distance criterion
ECS265	0° 11' 8".2968 S	52° 48' 50".400 E	0.5	60 M distance criterion
ECS266	0° 11' 7".386 S	52° 49' 20".280 E	0.5	60 M distance criterion
ECS267	0° 11' 6".7272 S	52° 49' 50".160 E	0.5	60 M distance criterion
ECS268	0° 11' 6".3204 S	52° 50' 20".400 E	0.5	60 M distance criterion
ECS269	0° 11' 6".1656 S	52° 50' 50".280 E	0.5	60 M distance criterion
ECS270	0° 11' 6".2592 S	52° 51' 20".160 E	0.5	60 M distance criterion
ECS271	0° 11' 6".6048 S	52° 51' 50".040 E	0.5	60 M distance criterion
ECS272	0° 11' 7".2024 S	52° 52' 19".920 E	0.5	60 M distance criterion
ECS273	0° 11' 8".052 S	52° 52' 49".800 E	0.5	60 M distance criterion
ECS274	0° 11' 9".150 S	52° 53' 20".040 E	0.5	60 M distance criterion
ECS275	0° 11' 10".5036 S	52° 53' 49".920 E	0.5	60 M distance criterion
ECS276	0° 11' 12".102 S	52° 54' 19".800 E	0.5	60 M distance criterion
ECS277	0° 11' 13".956 S	52° 54' 49".680 E	0.5	60 M distance criterion
ECS278	0° 11' 16".062 S	52° 55' 19".560 E	0.5	60 M distance criterion
ECS279	0° 11' 18".4128 S	52° 55' 49".440 E	0.5	60 M distance criterion
ECS280	0° 11' 21".0156 S	52° 56' 19".320 E	0.5	60 M distance criterion
ECS281	0° 11' 23".8704 S	52° 56' 48".840 E	0.5	60 M distance criterion
ECS282	0° 11' 26".9736 S	52° 57' 18".720 E	0.5	60 M distance criterion
ECS283	0° 11' 30".3288 S	52° 57' 48".600 E	0.5	60 M distance criterion
ECS284	0° 11' 33".9324 S	52° 58' 18".120 E	0.5	60 M distance criterion
ECS285	0° 11' 37".7844 S	52° 58' 48".000 E	0.5	60 M distance criterion



ECS286	0° 11' 41".8884 S	52° 59' 17".520 E	0.5	60 M distance criterion
ECS287	0° 11' 46".2372 S	52° 59' 47".400 E	0.5	60 M distance criterion
ECS288	0° 11' 50".8344 S	53° 0' 16".920 E	0.5	60 M distance criterion
ECS289	0° 11' 55".6836 S	53° 0' 46".440 E	0.5	60 M distance criterion
ECS290	0° 12' 0".7812 S	53° 1' 15".960 E	0.5	60 M distance criterion
ECS291	0° 12' 6".1236 S	53° 1' 45".480 E	0.5	60 M distance criterion
ECS292	0° 12' 11".7108 S	53° 2' 15".000 E	0.5	60 M distance criterion
ECS293	0° 12' 17".5464 S	53° 2' 44".160 E	0.5	60 M distance criterion
ECS294	0° 12' 23".6304 S	53° 3' 13".680 E	0.5	60 M distance criterion
ECS295	0° 12' 29".9556 S	53° 3' 42".840 E	0.5	60 M distance criterion
ECS296	0° 12' 36".5292 S	53° 4' 12".000 E	0.5	60 M distance criterion
ECS297	0° 12' 43".3476 S	53° 4' 41".160 E	0.5	60 M distance criterion
ECS298	0° 12' 50".4108 S	53° 5' 10".320 E	0.5	60 M distance criterion
ECS299	0° 12' 57".7188 S	53° 5' 39".480 E	0.5	60 M distance criterion
ECS300	0° 13' 5".268 S	53° 6' 8".280 E	0.5	60 M distance criterion
ECS301	0° 13' 13".062 S	53° 6' 37".440 E	0.5	60 M distance criterion
ECS302	0° 13' 21".0972 S	53° 7' 6".240 E	0.5	60 M distance criterion
ECS303	0° 13' 29".3772 S	53° 7' 35".040 E	0.5	60 M distance criterion
ECS304	0° 13' 37".8912 S	53° 8' 3".840 E	0.5	60 M distance criterion
ECS305	0° 13' 46".650 S	53° 8' 32".280 E	0.5	60 M distance criterion
ECS306	0° 13' 55".650 S	53° 9' 1".080 E	0.5	60 M distance criterion
ECS307	0° 14' 4".8876 S	53° 9' 29".520 E	0.5	60 M distance criterion
ECS308	0° 14' 14".3664 S	53° 9' 57".960 E	0.5	60 M distance criterion
ECS309	0° 14' 24".0792 S	53° 10' 26".400 E	0.5	60 M distance criterion
ECS310	0° 14' 34".0332 S	53° 10' 54".480 E	0.5	60 M distance criterion
ECS311	0° 14' 44".2212 S	53° 11' 22".560 E	0.5	60 M distance criterion
ECS312	0° 14' 54".6468 S	53° 11' 50".640 E	0.5	60 M distance criterion
ECS313	0° 15' 5".3064 S	53° 12' 18".720 E	0.5	60 M distance criterion
ECS314	0° 15' 16".2036 S	53° 12' 46".800 E	0.5	60 M distance criterion
ECS315	0° 15' 27".3312 S	53° 13' 14".520 E	0.5	60 M distance criterion
ECS316	0° 15' 38".6928 S	53° 13' 42".240 E	0.5	60 M distance criterion
ESC317	0° 15' 50".2884 S	53° 14' 9".960 E	0.5	60 M distance criterion
ECS318	0° 16' 2".1144 S	53° 14' 37".320 E	0.5	60 M distance criterion
ECS319	0° 16' 14".1708 S	53° 15' 5".040 E	0.5	60 M distance criterion
ECS320	0° 16' 26".4612 S	53° 15' 32".400 E	0.5	60 M distance criterion
ECS321	0° 16' 38".9784 S	53° 15' 59".400 E	0.5	60 M distance criterion
ECS322	0° 16' 51".7188 S	53° 16' 26".760 E	0.5	60 M distance criterion



ECS323	0° 17' 4".6896 S	53° 16' 53".760 E	0.5	60 M distance criterion
ECS324	0° 17' 17".8836 S	53° 17' 20".760 E	0.5	60 M distance criterion
ECS325	0° 17' 31".308 S	53° 17' 47".400 E	0.5	60 M distance criterion
ECS326	0° 17' 44".952 S	53° 18' 14".040 E	0.5	60 M distance criterion
ECS327	0° 17' 58".8264 S	53° 18' 40".680 E	0.5	60 M distance criterion
ECS328	0° 18' 12".9168 S	53° 19' 7".320 E	0.5	60 M distance criterion
ECS329	0° 18' 27".2304 S	53° 19' 33".600 E	0.5	60 M distance criterion
ECS330	0° 18' 41".7636 S	53° 19' 59".880 E	0.5	60 M distance criterion
ECS331	0° 18' 56".5164 S	53° 20' 25".800 E	0.5	60 M distance criterion
ECS332	0° 19' 11".4924 S	53° 20' 52".080 E	0.5	60 M distance criterion
ECS333	0° 19' 26".6808 S	53° 21' 17".640 E	0.5	60 M distance criterion
ECS334	0° 19' 42".0852 S	53° 21' 43".560 E	0.5	60 M distance criterion
ECS335	0° 19' 57".7056 S	53° 22' 9".120 E	0.5	60 M distance criterion
ECS336	0° 20' 13".542 S	53° 22' 34".680 E	0.5	60 M distance criterion
ECS337	0° 20' 29".5872 S	53° 22' 59".880 E	0.5	60 M distance criterion
ECS338	0° 20' 45".8448 S	53° 23' 25".080 E	0.5	60 M distance criterion
ECS339	0° 21' 2".3148 S	53° 23' 50".280 E	0.5	60 M distance criterion
ECS340	0° 21' 19".0008 S	53° 24' 15".120 E	0.5	60 M distance criterion
ECS341	0° 21' 35".8884 S	53° 24' 39".960 E	0.5	60 M distance criterion
ECS342	0° 21' 52".9884 S	53° 25' 4".800 E	0.5	60 M distance criterion
ECS343	0° 22' 10".290 S	53° 25' 29".280 E	0.5	60 M distance criterion
ECS344	0° 22' 27".804 S	53° 25' 53".400 E	0.5	60 M distance criterion
ECS345	0° 22' 45".5196 S	53° 26' 17".880 E	0.5	60 M distance criterion
ECS346	0° 23' 3".4368 S	53° 26' 42".000 E	0.5	60 M distance criterion
ECS347	0° 23' 21".552 S	53° 27' 5".760 E	0.5	60 M distance criterion
ECS348	0° 23' 39".8724 S	53° 27' 29".520 E	0.5	60 M distance criterion
ECS349	0° 23' 58".3872 S	53° 27' 53".280 E	0.5	60 M distance criterion
ECS350	0° 24' 17".1036 S	53° 28' 16".680 E	0.5	60 M distance criterion
ECS351	0° 24' 36".0144 S	53° 28' 40".080 E	0.5	60 M distance criterion
ECS352	0° 24' 55".1196 S	53° 29' 3".120 E	0.5	60 M distance criterion
ECS353	0° 25' 14".4156 S	53° 29' 26".160 E	0.5	60 M distance criterion
ECS354	0° 25' 33".9096 S	53° 29' 49".200 E	0.5	60 M distance criterion
ECS355	0° 25' 53".5944 S	53° 30' 11".880 E	0.5	60 M distance criterion
ECS356	0° 26' 13".47 S	53° 30' 34".200 E	0.5	60 M distance criterion
ECS357	0° 26' 33".5292 S	53° 30' 56".520 E	0.5	60 M distance criterion
ECS358	0° 26' 53".7828 S	53° 31' 18".840 E	0.5	60 M distance criterion
ECS359	0° 27' 14".2164 S	53° 31' 40".800 E	0.5	60 M distance criterion





ECS360	0° 27' 34".8336 S	53° 32' 2".760 E	0.5	60 M distance criterion
ECS361	0° 27' 55".638 S	53° 32' 24".360 E	0.5	60 M distance criterion
ECS362	0° 28' 16".6152 S	53° 32' 45".960 E	0.5	60 M distance criterion
ECS363	0° 28' 37".7724 S	53° 33' 7".200 E	0.5	60 M distance criterion
ECS364	0° 28' 59".1168 S	53° 33' 28".440 E	0.5	60 M distance criterion
ECS365	0° 29' 20".6268 S	53° 33' 49".320 E	0.5	60 M distance criterion
ECS366	0° 29' 42".3168 S	53° 34' 10".200 E	0.5	60 M distance criterion
ECS367	0° 30' 4".1796 S	53° 34' 30".720 E	0.5	60 M distance criterion
ECS368	0° 30' 26".2188 S	53° 34' 51".240 E	0.5	60 M distance criterion
ECS369	0° 30' 48".4236 S	53° 35' 11".400 E	0.5	60 M distance criterion
ECS370	0° 31' 10".8048 S	53° 35' 31".560 E	0.5	60 M distance criterion
ECS371	0° 31' 33".3444 S	53° 35' 51".360 E	0.5	60 M distance criterion
ECS372	0° 31' 56".0532 S	53° 36' 11".160 E	0.5	60 M distance criterion
ECS373	0° 32' 18".9276 S	53° 36' 30".600 E	0.5	60 M distance criterion
ECS374	0° 32' 41".9676 S	53° 36' 50".040 E	0.5	60 M distance criterion
ECS375	0° 33' 5".1696 S	53° 37' 9".120 E	0.5	60 M distance criterion
ECS376	0° 33' 28".53 S	53° 37' 27".840 E	0.5	60 M distance criterion
ECS377	0° 33' 52".0416 S	53° 37' 46".560 E	0.5	60 M distance criterion
ECS378	0° 34' 15".7152 S	53° 38' 5".280 E	0.5	60 M distance criterion
ECS379	0° 34' 39".5436 S	53° 38' 23".640 E	0.5	60 M distance criterion
ECS380	0° 35' 3".5268 S	53° 38' 41".640 E	0.5	60 M distance criterion
ECS381	0° 35' 27".6576 S	53° 38' 59".640E	0.5	60 M distance criterion
ECS382	0° 35' 51".9432 S	53° 39' 17".640 E	0.5	60 M distance criterion
ECS383	0° 36' 16".3728 S	53° 39' 34".920E	0.5	60 M distance criterion
ECS384	0° 36' 40".9464 S	53° 39' 52".200 E	0.5	60 M distance criterion
ECS385	0° 37' 5".6676 S	53° 40' 9".480 E	0.5	60 M distance criterion
ECS386	0° 37' 30".5292 S	53° 40' 26".400 E	0.5	60 M distance criterion
ECS387	0° 37' 55".5348 S	53° 40' 43".320 E	0.5	60 M distance criterion
ECS388	0° 38' 20".6772 S	53° 40' 59".880 E	0.5	60 M distance criterion
ECS389	0° 38' 45".9636 S	53° 41' 16".080 E	0.5	60 M distance criterion
ECS390	0° 39' 11".3832 S	53° 41' 32".280 E	0.5	60 M distance criterion
ECS391	0° 39' 36".936 S	53° 41' 48".120 E	0.5	60 M distance criterion
ECS392	0° 40' 2".622 S	53° 42' 3".600 E	0.5	60 M distance criterion
ECS393	0° 40' 28".4412 S	53° 42' 19".080 E	0.5	60 M distance criterion
ECS394	0° 40' 54".3864 S	53° 42' 34".560 E	0.5	60 M distance criterion
ECS395	0° 41' 20".4576 S	53° 42' 49".320 E	0.5	60 M distance criterion
ECS396	0° 41' 46".6584 S	53° 43' 4".440 E	0.5	60 M distance criterion



Republic of Seychelles

ECS397	0° 42' 12".978 S	53° 43' 18".840 E	0.5	60 M distance criterion
ECS398	0° 42' 39".3228 S	53° 43' 33".240 E	0.5	60 M distance criterion / Baseline + 200M