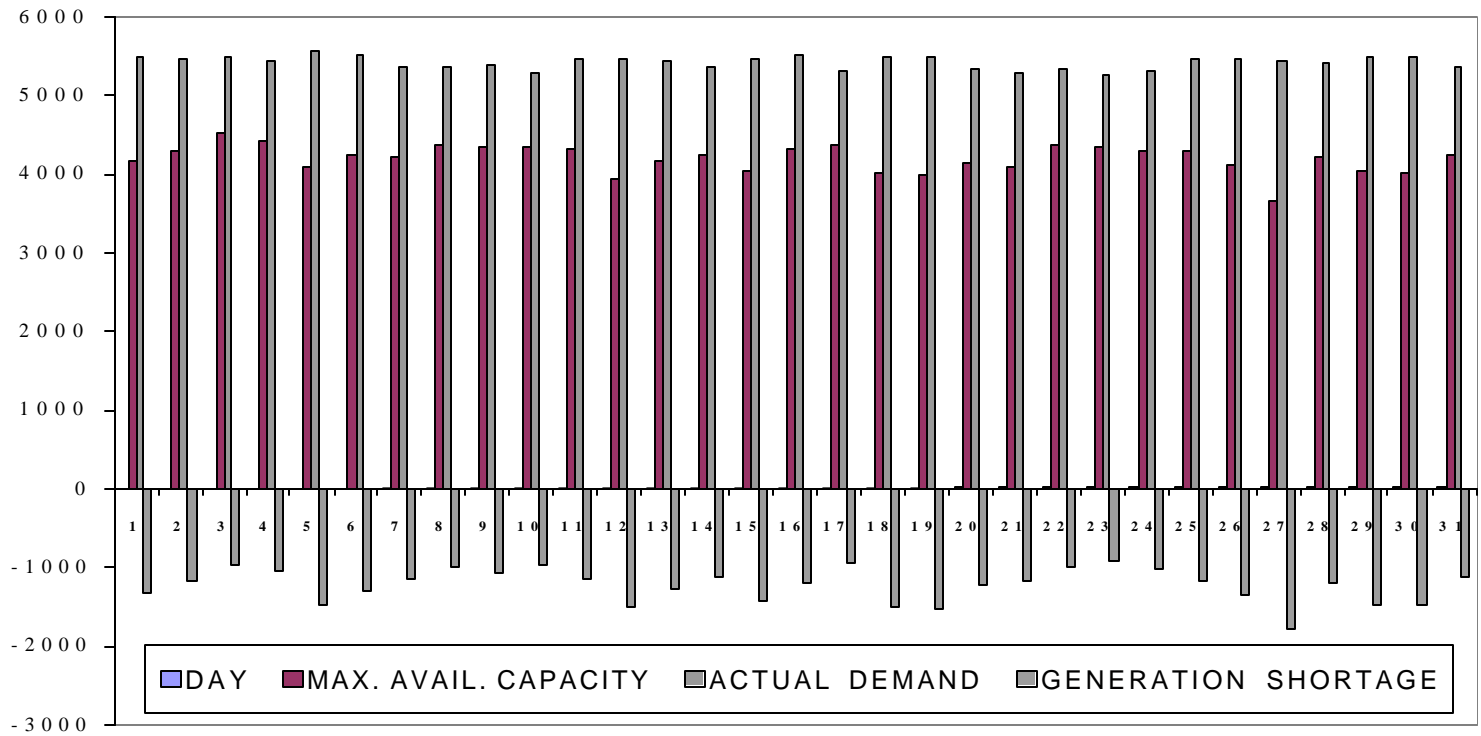


ANNEX 1
Phase VI
(Electricity Sector)

AVAILABLE CAPACITY , DEMAND , GENERATION SHORTAGE AND TOTAL
INSTALLED CAPACITY OF THE SYSTEM DURING AUGUST 1998



INSTALLED CAPACITY = 8090 MW

ANNEX 1

AVAILABLE CAPACITY , DEMAND , GENERATION SHORTAGE AND TOTAL INSTALLED CAPACITY OF THE SYSTEM DURING AUGUST 1998

DAY	MAX. AVAIL. CAPACITY	ACTUAL DEMAND	GENERATION SHORTAGE
1	4172	5484	-1312
2	4295	5466	-1171
3	4541	5493	-952
4	4419	5450	-1031
5	4096	5555	-1459
6	4236	5526	-1290
7	4231	5377	-1146
8	4370	5364	-994
9	4350	5408	-1058
10	4350	5302	-952
11	4330	5476	-1146
12	3950	5455	-1505
13	4160	5445	-1285
14	4250	5378	-1128
15	4046	5458	-1412
16	4315	5517	-1202
17	4370	5316	-946
18	4015	5501	-1486
19	3986	5501	-1515
20	4136	5356	-1220
21	4105	5283	-1178
22	4366	5358	-992
23	4358	5274	-916
24	4300	5324	-1024
25	4300	5472	-1172
26	4123	5474	-1351
27	3673	5450	-1777
28	4220	5425	-1205
29	4030	5490	-1460
30	4021	5498	-1477
31	4255	5373	-1118

INSTALLED CAPACITY = 8090 MW

Annex (2)

Phase VI
(Electricity Sector)

04 - 0000A - REQUIREMENT LIST OF POWER STATIONS AND NETWORK

CODE	NETWORK POWER STATIONS
SECTION A 01	MUSSAIB POWER STATION
SECTION A 02	BAIJI POWER STATION
SECTION A 03	NASSIRIYAH POWER STATION
SECTION A 04	HARTHA POWER STATION
SECTION A 05	DAURA POWER STATION
SECTION A 06	NAJIBIA POWER STATION
SECTION A 07	BAGHDAD SOUTH POWER STATION
SECTION A 08	DIBIS POWER STATION
SECTION A 09	ZAFARANIYA DIESEL POWER STATION
SECTION A 10	SADDAM HYDRO – ELECTRIC POWER STATION
SECTION A 11	QADISSIYA HYDRO – ELECTRIC POWER STATION
SECTION A 12	SAMARRA HYDRO – ELECTRIC POWER STATION
SECTION A 13	HIMREEN HYDRO – ELECTRIC POWER STATION
SECTION A 14	BADOUSH HYDRO – ELECTRIC POWER STATION
SECTION A 15	AL-ADHAIM HYDRO – ELECTRIC POWER STATION
SECTION A 16	NAJAF GAS TURBINE POWER STATION
SECTION A 17	KHOR AL- ZUBAIR GAS TURBINE POWER STATION
SECTION A 18	MOSUL GAS TURBINE POWER STATION
SECTION A 19	TAJI GAS TURBINE POWER STATION
SECTION A 20	MULLA ABDULLA GAS TURBINE POWER STATION
SECTION A 21	HILLA GAS TURBINE POWER STATION
SECTION A 22	SHUAIBA GAS TURBINE POWER STATION
SECTION A 23	DAURA GAS TURBINE POWER STATION
SECTION A 24	DIBIS GAS TURBINE POWER STATION
SECTION A 25	PETRO CHEMICAL GAS TURBINE POWER STATION
SECTION A 26	YOUSIFIYA POWER STATION
SECTION A 27	AL-ANBAR POWER STATION
SECTION A 28	NORTH POWER STATION
SECTION A 29	SALAH AL – DEEN POWER STATION (4 X 300 MW)
SECTION A 30	GAS TURBINE UNITS
SECTION A 31	MOBILE GAS TURBINE
SECTION B 32	TRANSMISSION NETWORK
SECTION B 33	TRANSPORTATION LIFTING AND HANDLING
SECTION C 34	DISTRIBUTION NETWORK
SECTION D 35	TRAINING PROGRAMMES

SECTION A 01- - AL - MUSSAIB POWER STATION

QTY	ITEM	Code
1000 PC+ 500 SET	TURBINE SYSTEM EQUIPMENT	04-01-00001
100000 PCS	BOILER TUBES	04-01-00002
2000 PCS+	BOILER AUXILIARY SYSTEM	04-01-00003
1500 KG.	PACKING OF DIFFERENT SIZES	04-01-00004
4 SETS	AIR HEATERS	04-01-00005
50000 PCS.	CONDENSER TUBES	04-01-00006
1000 NOS + 500 SET.	PUMPS , COMPRESSORS AND ROTARY MACHINES	04-01-00007
1200 NOS+ 600 SET.	SWITCH YARD EQUIPMENT AND ACCESSORIES	04-01-00008
2 UNITS	POWER TRANSFORMERS	04-01-00009
1000 NOS. + 500 SET	VALVES OF VARIOUS SIZES	04-01-00010
1000 TONS	CHEMICALS FOR WATER TREATMENT	04-01-00011
2000 PCS+500 SET.	WATER TREATMENT EQUIPMENT	04-01-00012
500 TONS	CORTEN STEEL	04-01-00013
5000 PCS+100 SET.	CONTROL , MEASUREMENT AND PROTECTION SYSTEMS.	04-01-00014
220 UNITS+500 NOS	DC POWER SUPPLY EQUIPMENT	04-01-00015
25 SETS +200 NOS	GENERATOR , SYSTEM EQUIPMENT	04-01-00016
4 UNITS	REHABILITATION AND ENGINEERING SERVICES	04-01-00017
4 UNIT	GAS TURBINE UNIT 123 MW WITH ACCESSORIES	04-01-00018

SECTION A 02 -BAJI POWER STATION

QTY	ITEM	Code
5000 PCS + 500 SET.	TURBINE SYSTEM EQUIPMENT	04-01-00019
50000 PCS.	BOILER TUBES	04-01-00020
500 PCS + 2000 KG	BOILER AUXILIARY SYSTEM	04-01-00021
2000 KG	PACKING OF DIFFERENT SIZES	04-01-00022
6 SETS	AIR HEATERS	04-01-00023
95000 PCS.	CONDENSER TUBES	04-01-00024
300 NOS.+ 200 SET	PUMPS , COMPRESSORS AND ROTARY MACHINES	04-01-00025
100 SET + 2000 PCS	SWITCH YARD EQUIPMENT AND ACCESSORIES	04-01-00026
2 UNITS	POWER TRANSFORMERS	04-01-00027
2000 NOS + 1000 SET	VALVES OF VARIOUS SIZES	04-01-00028
1,320* TONS	CHEMICALS FOR WATER TREATMENT	04-01-00029
5000 PCS + 1000 SET.	WATER TREATMENT EQUIPMENT	04-01-00030
300 TONS	CORTEN STEEL	04-01-00031
5000 PCS + 2000 SET.	CONTROL , MEASURMENT AND PROTECTION SYSTEMS.	04-01-00032
2500 UNITS + 1000 PCS	DC POWER SUPPLY EQUIPMENT	04-01-00033
2000 SETS + 1000 PCS	GENERATOR , SYSTEM EQUIPMENT	04-01-00034
6 UNITS	REHABILITATION AND ENGINEERING SERVICES	04-01-00035
9 UNITS	GAS TURBINE UNITS AND ACCESSORIES	04-01-00036

SECTION A 03 - NASSIRIYAH POWER STATION

QTY	ITEM	Code
20000 PCS+2000 SET.	TURBINE SYSTEM EQUIPMENT	04-01-00037
100000 TUBES.	BOILER TUBES	04-01-00038
10000 PCS +100 SET	BOILER AUXILIARY SYSTEM	04-01-00039
2000 KG	PACKING OF DIFFERENT SIZES	04-01-00040
8 SETS	AIR HEATERS	04-01-00041
200000 PCS.	CONDENSER TUBES	04-01-00042
2400 NOS + 60 SET.	PUMPS , COMPRESSORS AND ROTARY MACHINES	04-01-00043
1000 SET + 500 NOS.	SWITCH YARD EQUIPMENT AND ACCESSORIES	04-01-00044
2 UNITS	POWER TRANSFORMERS	04-01-00045
9000 NOS.	VALVES OF DIFFERENT TYPES	04-01-00046
1000 TONS	CHEMICALS FOR WATER TREATMENT	04-01-00047
9500 PCS.+ 1500 SET	WATER TREATMENT EQUIPMENT	04-01-00048
300 TONS	CORTEN STEEL	04-01-00049
10000 PCS + 2000 SET.	CONTROL , MEASURMENT AND PROTECTION SYSTEMS.	04-01-00050
4500 UNITS+4500 NOS	DC POWER SUPPLY EQUIPMENT	04-01-00051
2500 SETS + 5000 NOS.	GENERATOR , SYSTEM EQUIPMENT	04-01-00052
2 UNITS	NEW UNITS WITH ALL AUXILIARY UNITS AND SERVICES.	04-01-00053

SECTION A 04 - HARTHA POWER STATION

QTY	ITEM	Code
9000 PCS + 500 SET.	TURBINE SYSTEM EQUIPMENT	04-01-00054
50000 TUBES.	BOILER TUBES	04-01-00055
50 SET + 1000 PCS.	BOILER AUXILIARY SYSTEM	04-01-00056
2000 KG	PACKING OF DIFFERENT SIZES	04-01-00057
4 SETS	AIR HEATERS	04-01-00058
250000 PCS.	CONDENSER TUBES	04-01-00059
52000 NOS.+ 5000 SET	PUMPS , COMPRESSORS AND ROTARY MACHINES	04-01-00060
2000 SET + 10000 PCS.	SWITCH YARD EQUIPMENT AND ACCESSORIES	04-01-00061
2 UNITS	POWER TRANSFORMERS	04-01-00062
5000 NOS.	VALVES OF DIFFERENT TYPES	04-01-00063
500 TONS	CHEMICALS FOR WATER TREATMENT	04-01-00064
30000 PCS + 500 SET.	WATER TREATMENT EQUIPMENT	04-01-00065
100 TONS	CORTEN STEEL	04-01-00066
15000 PCS + 3500 SET.	CONTROL , MEASURMENT AND PROTECTION SYSTEMS.	04-01-00067
2500 UNITS+7500 PCS	DC POWER SUPPLY EQUIPMENT	04-01-00068
5000 SETS + 500 PCS	GENERATOR , SYSTEM EQUIPMENT	04-01-00069
4 UNITS	REHABILITATION AND ENGINEERING SERVICES	04-01-00070
2 UNITS	BOILERS WITH ACCESSORIES	04-01-00071

SECTION A 05 - DAURA POWER STATION

QTY	ITEM	Code
10000 PCS + 1000 SET.	TURBINE SYSTEM EQUIPMENT	04-01-00072
50000 TUBES.	BOILER TUBES	04-01-00073
1000 SET + 2000 PCS.	BOILER AUXILIARY SYSTEM	04-01-00074
500 KG	PACKING OF DIFFERENT SIZES	04-01-00075
4 SETS	AIR HEATERS	04-01-00076
250000 PCS.	CONDENSER TUBES	04-01-00077
2000 NOS + 1000 SET.	PUMPS , COMPRESSORS AND ROTARY MACHINES	04-01-00078
10000 SET + 5000 NOS	SWITCH YARD EQUIPMENT AND ACCESSORIES	04-01-00079
2 UNITS	POWER TRANSFORMERS	04-01-00080
15000 NOS.	VALVES OF DIFFERENT TYPES	04-01-00081
1000 TONS	CHEMICALS FOR WATER TREATMENT	04-01-00082
5000 PCS. + 200 SET	WATER TREATMENT EQUIPMENT	04-01-00083
100 TONS	CORTEN STEEL	04-01-00084
10000 PCS + 1000 SET.	CONTROL , MEASURMENT AND PROTECTION SYSTEMS.	04-01-00085
7500 UNITS+1000 NOS	DC POWER SUPPLY EQUIPMENT	04-01-00086
5000 SETS + 1000 NOS	GENERATOR , SYSTEM EQUIPMENT	04-01-00087
4 UNITS	REHABILITATION AND ENGINEERING SERVICES	04-01-00088

SECTION A 06 -NAJIBIA POWER STATION

QTY	ITEM	Code
10000 PCS + 1000 SET.	TURBINE SYSTEM EQUIPMENT	04-01-00089
100000 TUBES.	BOILER TUBES	04-01-00090
10000 PCS.+ 1500 SET	BOILER AUXILIARY SYSTEM	04-01-00091
1500 KG	PACKING OF DIFFERENT SIZES	04-01-00092
4 SETS	AIR HEATERS	04-01-00093
80000 PCS.	CONDENSER TUBES	04-01-00094
2000 NOS.+ 1000 SET	PUMPS , COMPRESSORS AND ROTARY MACHINES	04-01-00095
1000 SET + 500 NOS.	SWITCH YARD EQUIPMENT AND ACCESSORIES	04-01-00096
2 UNITS	POWER TRANSFORMERS	04-01-00097
10000 NOS. + 500 SETS	VALVES OF DIFFERENT TYPES	04-01-00098
500 TONS	CHEMICALS FOR WATER TREATMENT	04-01-00099
50000 PCS. + 500 SET	WATER TREATMENT EQUIPMENT	04-01-00100
100 TONS	CORTEN STEEL	04-01-00101
5000 PCS + 1000 SET.	CONTROL , MEASURMENT AND PROTECTION SYSTEMS.	04-01-00102
7500 UNITS +1000 PCS	DC POWER SUPPLY EQUIPMENT	04-01-00103
5000 SETS + 1000 NOS	GENERATOR , SYSTEM EQUIPMENT	04-01-00104
2 UNITS	REHABILITATION AND ENGINEERING SERVICES	04-01-00105

SECTION A 07 - BAGHDAD SOUTH POWER STATION

QTY	ITEM	Code
2000 PCS + 1000 SET.	TURBINE SYSTEM EQUIPMENT	04-01-00106
60000 TUBES.	BOILER TUBES	04-01-00107
10000 PCS.+ 500 SET	BOILER AUXILIARY SYSTEM	04-01-00108
1000 KG	PACKING OF DIFFERENT SIZES	04-01-00109
6 SETS	AIR HEATERS	04-01-00110
50000 PCS.	CONDENSER TUBES	04-01-00111
2000 NOS + 1000 SET.	PUMPS , COMPRESSORS AND ROTARY MACHINES	04-01-00112
200 SET + 100 NOS	SWITCH YARD EQUIPMENT AND ACCESSORIES	01-01-00113
2 UNITS	POWER TRANSFORMERS	04-01-00114
10000 NOS.+ 1000 SET	VALVES OF DIFFERENT TYPES	04-01-00115
750 TONS	CHEMICALS FOR WATER TREATMENT	04-01-00116
20000 PCS + 1000 SET.	WATER TREATMENT EQUIPMENT AND SPARE PARTS *	04-01-00117
100 TONS	CORTEN STEEL	04-01-00118
50000 PCS. + 2000 SET	CONTROL , MEASURMENT AND PROTECTION SYSTEMS.	04-01-00119
7500 UNITS+100 PCS	DC POWER SUPPLY EQUIPMENT	04-01-00120
2000 SETS + 10000 PCS.	GENERATOR , SYSTEM EQUIPMENT	04-01-00121
2 UNITS	REHABILITATION AND ENGINEERING SERVICES	04-01-00122

* amended 23 September99

SECTION A 08 - DIBIS POWER STATION

QTY	ITEM	Code
100 PCS.	TURBINE SYSTEM EQUIPMENT	04-01-00123
10000 TUBES.	BOILER TUBES	04-01-00124
200 PCS + 100 SET	BOILER AUXILIARY SYSTEM	04-01-00125
500 KG	PACKING OF DIFFERENT SIZES	04-01-00126
40000 TUBES.	CONDENSER TUBES	04-01-00127
100 NOS + 50 SET.	PUMPS , COMPRESSORS AND ROTARY MACHINES	04-01-00128
300 SET + 100 NOS.	SWITCH YARD EQUIPMENT AND ACCESSORIES	04-01-00129
2 UNITS	POWER TRANSFORMERS	04-01-00130
200 NOS.	VALVES OF DIFFERENT TYPES	04-01-00131
2000 PCS + 100 SET.	CONTROL , PROTECTION AND MEASURING SYSTEM.	04-01-00132
1250 UNITS+100 PCS	DC POWER SUPPLY EQUIPMENT	04-01-00133
100 SETS + 50 PCS	GENERATOR , SYSTEM EQUIPMENT	04-01-00134
4 UNITS	REHABILITATION AND ENGINEERING SERVICES	04-01-00135

SECTION A 09 – ZAFARANIYA DIESEL POWER STATION

QTY	ITEM	Code
4 UNITS.	REHABILITATION AND ENGINEERING SERVICES	04-01-00136

SECTION A 10 - SADDAM HYDRO - ELECTRIC POWER TATION

QTY	ITEM	Code
40 SETS	TURBINE SYSTEM EQUIPMENT	04-01-00137
200 PCS	GENERATOR SYSTEM EQUIPMENT	04-01-00138
600 PCS	CONTROL , MEASURMENT AND PROTECTION SYSTEMS.	04-01-00139
200 SETS	SWITCH YARD EQUIPMENT	04-01-00140
1200 UNITS	DC POWER SUPPLY EQUIPMENT	04-01-00141
200 UNITS	GATES AND VALVES	04-01-00142
60 UNITS	AIR COMPRESSORS AND ACCESSORIES	04-01-00143

SECTION A 11 - QADISSIYA HYDRO - ELECTRIC POWER STATION

QTY	ITEM	Code
1000 PCS + 10 SET	TURBINE SYSTEM EQUIPMENT	04-01-00144
1000 PCS	GENERATOR SYSTEM EQUIPMENT	04-01-00145
1500 PCS	CONTROL , MEASUREMENT AND PROTECTION SYSTEMS.	04-01-00146
400 SETS	SWITCH YARD EQUIPMENT	04-01-00147
1250 UNITS	DC POWER SUPPLY EQUIPMENT	04-01-00148
500 UNITS	GATES AND VALVES	04-01-00149
400 UNITS	AIR COMPRESSORS AND ACCESSORIES	04-01-00150
1000 M.	400 KV OIL FILLED CABLES	04-01-00151
140 UNITS	CABLE BOX TERMINATIONS	04-01-00152

SECTION A 12 - SAMARRA HYDRO – ELECTRIC POWER STATION

QTY	ITEM	Code
50 SETS	TURBINE SYSTEM EQUIPMENT	04-01-00153
100 SETS	GENERATOR SYSTEM EQUIPMENT	04-01-00154
30 SETS + 100 NOS	CONTROL , MEASUREMENT AND PROTECTION SYSTEMS.	04-01-00155
1100 UNITS	DC POWER SUPPLY EQUIPMENT	04-01-00156
100 SETS	GATES AND VALVES	04-01-00157
60 SETS	AIR COMPRESSORS AND ACCESSORIES	04-01-00158

SECTION A 13 - HIMREEN HYDRO - ELECTRIC POWER STATION

QTY	ITEM	Code
100 SETS	TURBINE SYSTEM EQUIPMENT	04-01-00159
200 PCS.	GENERATOR SYSTEM EQUIPMENT	04-01-00160
100 PCS.	CONTROL , MEASUREMENT AND PROTECTION SYSTEMS.	04-01-00161
100 SETS	SWITCH YARD EQUIPMENT	04-01-00162
1200 UNITS	DC POWER SUPPLY EQUIPMENT	04-01-00163
100 SETS	GATES AND VALVES	04-01-00164
20 SETS	AIR COMPRESSORS AND ACCESSORIES	04-01-00165

SECTION A 14 - BADOUSH HYDRO - ELECTRIC POWER STATION (4 X 42.5) MW

QTY	ITEM	Code
4 UNITS	ENGINEERING , ENBEDED PARTS AND STARTING MANUFACTURING FOR SUPPLING (4 X 42.5)MW UNIT.	04-01-00166
FOR COMPLETE 4 UNITS.	EQUIPMENT (ELECTRO MECHANICAL) FOR SUPPLING (4X42.5 MW) HYDRO POWER UNITS	04-01-00167

SECTION A 15 – AL-ADHAIM HYDRO - ELECTRIC POWER STATION (2 X 15) MW

QTY	ITEM	Code
2 UNITS	ENGINEERING , ENBEDED PARTS AND STARTING MANUFACTURING FOR SUPPLING (2X 15)MW UNIT	04-01-00168
FOR COMPLETE 2 UNITS.	EQUIPMENT (ELECTRO MECHANICAL) FOR SUPPLING (2 X 15 MW) HYDRO POWER UNITS	04-01-00169

SECTION A 16 - NAJAF GAS TURBINE POWER STATION

QTY	ITEM	Code
(2000) NOS. (400) SET	TURBINE AND COMPRESSOR BLADES , MOVING STATIONARY WITH ACCESSORIES	04-01-00170
(1000) NOS. + 500 SET	INNER CASING AND HOT PATH EQUIPMENT	04-01-00171
1000 NOS + 500 SET.	COMBUSTION EQUIPMENT AND ACCESSORIES	04-01-00172
20 NOS.	GAS UNITS STARTING DEVICE	04-01-00173
1500 NOS. + 500 SET	CONTROL , MEASURMENT AND PROTECTION SYSTEMS.	04-01-00174
300 NOS.	GENERATOR , EXCITATION AND ACCESSORIES	04-01-00175
100 NOS.	PUMPS , MOTORS AND ROTARY MACHINES	04-01-00176
500 NOS + 5 ETS	BATTERIES , CHARGERS AND CONVERTERS	04-01-00177
100 NOS.	SWITCH YARD EQUIPMENT	04-01-00178
3 UNITS	REHABILITATION AND ENGINEERING SERVICES	04-01-00179

SECTION A 17 - KHOR AL – ZUBAIR GAS TURBINE POWER STATION

QTY	ITEM	Code
3000 NOS. 50 SETS	TURBINE AND COMPRESSOR BLADES MOVING STATIONARY WITH ACCESSORIES	04-01-00180
1500 NOS. + 500 SET	INNER CASING AND HOT PATH EQUIPMENT	04-01-00181
1000 NOS. 50 SETS	COMBUSTION EQUIPMENT AND ACCESSORIES	04-01-00182
20 NOS.	GAS UNITS STARTING DEVICE	04-01-00183
1000 NOS. + 500 SET	CONTROL , MEASURMENT AND PROTECTION SYSTEMS.	04-01-00184
1500 NOS. + 500 SET	GENERATOR , EXCITATION AND ACCESSORIES	04-01-00185
1500 NOS. + 500 SET	PUMPS , MOTORS AND ROTARY MACHINES	04-01-00186
5000 NOS. 100 SETS	BATTERIES , CHARGERS AND CONVERTERS	04-01-00187
1000 SET + 2000 PCS	SWITCH YARD EQUIPMENT	04-01-00188
4 UNITS	REHABILITATION AND ENGINEERING SERVICES	04-01-00189
3 UNITS	* GAS TURBINE UNIT 156 MW WITH ACCESSORIES	04-01-00190

* Not to be funded from MOU budget

SECTION A 18- MOSUL GAS TURBINE POWER STATION

QTY	ITEM	Code
10000 NOS. 2000 SET	TURBINE AND COMPRESSOR BLADES MOVING STATIONARY WITH ACCESSORIES	04-01-00191
150 NOS.	INNER CASING AND HOT PATH EQUIPMENT	04-01-00192
2000 NOS + 20 SET.	COMBUSTION EQUIPMENT AND ACCESSORIES	04-01-00193
1500 NOS + 500 SET	GAS UNITS STARTING DEVICE	04-01-00194
500 NOS + 500 SET	CONTROL , MEASURMENT AND PROTECTION SYSTEMS.	04-01-00195
2000 NOS+300 UNITS	GENERATOR , EXCITATION AND ACCESSORIES	04-01-00196
2500 NOS + 1000 SET.	PUMPS , MOTORS AND ROTARY MACHINES	04-01-00197
1500 NOS + 500 SET	BATTERIES , CHARGERS AND CONVERTERS	04-01-00198
2500 NOS.+ 500 SET	SWITCH YARD EQUIPMENT	04-01-00199
10 UNITS.	SUPERVISION FOR REHABILITATION	04-01-00200
12 UNITS	REHABILITATION AND ENGINEERING SERVICES	04-01-00201
LOT	GENERAL SPARE PARTS FOR FRAME-5 GAS TURBINES	04-01-00202
2 UNITS	GAS TURBINE UNITS AND ACCESSORIES	04-01-00203

SECTION A 19 - TAJI GAS TURBINE POWER STATION

QTY	ITEM	Code
1000 NOS. 4 SETS	TURBINE AND COMPRESSOR BLADES MOVING STATIONARY WITH ACCESSORIES	04-01-00204
10000 NOS. 400 SETS	INNER CASING AND HOT PATH EQUIPMENT	04-01-00205
10000 NOS. 400 SETS	COMBUSTION EQUIPMENT AND ACCESSORIES	04-01-00206
15000 NOS. 1000 SETS	GAS UNITS STARTING DEVICE	04-01-00207
1500 NOS.+ 500 SET	CONTROL , MEASURMENT AND PROTECTION SYSTEMS.	04-01-00208
1000 NOS.+ 500 SET	GENERATOR , EXCITATION AND ACCESSORIES	04-01-00209
1500 NOS. + 500 SET	PUMPS , MOTORS AND ROTARY MACHINES	04-01-00210
1000 NOS. + 500 SET	BATTERIES , CHARGERS AND CONVERTERS	04-01-00211
1000 NOS. + 500 SET	SWITC HYARD EQUIPMENT	04-01-00212
7 UNITS	REHABILITATION AND ENGINEERING SERVICES	04-01-00213
22 UNITS	REHABILITATION AND ENGINEERING SERVICES FOR MOBILE G.T. UNITS (IHI & GEC)	04-01-00214
1 UNIT	GAS TURBINE UNITS AND ACCESSORIES	04-01-00215

SECTION A 20 - MULLA ABDULLA GAS TURBINE POWER STATION

QTY	ITEM	Code
15000 NOS. 400 SETS	TURBINE AND COMPRESSOR BLADES MOVING STATIONARY WITH ACCESSORIES	04-01-00216
1500 NOS. 400 SETS	INNER CASING AND HOT PATH EQUIPMENT	04-01-00217
1000 NOS. 400 SETS	COMBUSTION EQUIPMENT AND ACCESSORIES	04-01-00218
500 NOS. 250 SETS	GAS UNITS STARTING DEVICE	04-01-00219
1800 NOS+100 SET	CONTROL , MEASURMENT AND PROTECTION SYSTEMS.	04-01-00220
2000 NOS + 100 SET.	GENERATOR , EXCITATION AND ACCESSORIES	04-01-00221
1200 NOS + 100 SET.	PUMPS , MOTORS AND ROTARY MACHINES	04-01-00222
500 NOS+200 SETS	BATTERIES , CHARGERS AND CONVERTERS	04-01-00223
1000 NOS + 500 SET.	SWITCH YARD EQUIPMENT	04-01-00224
10 UNITS	REHABILITATION AND ENGINEERING SERVICES	04-01-00225
12 UNITS	GAS TURBINE UNITS AND ACCESSORIES	04-01-00226

SECTION A 21 - HILLA GAS TURBINE POWER STATION

QTY	ITEM	Code
5000 NOS. 100 SET	TURBINE AND COMPRESSOR BLADES MOVING STATIONARY WITH ACCESSORIES	04-01-00227
40 SETS + 100 NOS	INNER CASING AND HOT PATH EQUIPMENT	04-01-00228
2500 NOS 100 SETS	COMBUSTION EQUIPMENT AND ACCESSORIES	04-01-00229
2000 NOS+60 SETS	GAS UNITS STARTING DEVICE	04-01-00230
1500 NOS.+ 500 SET	CONTROL , MEASUREMENT AND PROTECTION SYSTEMS.	04-01-00231
1000 NOS. + 500 SET	GENERATOR, EXCITATION AND ACCESSORIES	04-01-00232
550 NOS.+ 100 SET	PUMPS , MOTORS AND ROTARY MACHINES	04-01-00233
100 NOS. + 50 SET	BATTERIES , CHARGERS AND CONVERTERS	04-01-00234
500 NOS + 50 SETS	SWITCH YARD EQUIPMENT	04-01-00235
4 UNITS	REHABILITATION AND ENGINEERING SERVICES	04-01-00236

SECTION A 22 - SHUAIBA GAS TURBINE POWER STATION

QTY	ITEM	Code
3000 NOS. 400 SETS	TURBINE AND COMPRESSOR BLADES MOVING STATIONARY WITH ACCESSORIES	04-01-00237
1000 NOS. 400 SETS	INNER CASING AND HOT PATH EQUIPMENT	04-01-00238
10000 NOS. 40 SETS	COMBUSTION EQUIPMENT AND ACCESSORIES	04-01-00239
150 NOS.+10 SET	GAS UNITS STARTING DEVICE	04-01-00240
750 NOS.+ 10 SET	CONTROL , MEASUREMENT AND PROTECTION SYSTEMS.	04-01-00241
500 NOS + 100 SET	GENERATOR , EXCITATION AND ACCESSORIES	04-01-00242
100 NOS + 50 SET.	PUMPS , MOTORS AND ROTARY MACHINES	04-01-00243
500 NOS + 50 SETS	BATTERIES , CHARGERS AND CONVERTERS	04-01-00244
2000 NOS + 100 SET.	SWITCH YARD EQUIPMENT	04-01-00245
2 UNITS	REHABILITATION AND ENGINEERING SERVICES	04-01-00246

SECTION A 23 - DAURA GAS TURBINE POWER STATION

QTY	ITEM	Code
6000 NOS 600 SETS.	TURBINE AND COMPRESSOR BLADES MOVING STATIONARY WITH ACCESSORIES	04-01-00247
1000 NOS.+ 600 SETS	INNER CASING AND HOT PATH EQUIPMENT	04-01-00248
4000 NOS. 2500 SETS	COMBUSTION EQUIPMENT AND ACCESSORIES	04-01-00249
1000 NOS.+ 50 SET	GAS UNITS STARTING DEVICE	04-01-00250
2500 NOS.	CONTROL , MEASURMENT AND PROTECTION SYSTEMS.	04-01-00251
1350 NOS+100 SET.	GENERATOR , EXCITATION AND ACCESSORIES	04-01-00252
5000 NOS.+500 SET	PUMPS , MOTORS AND ROTARY MACHINES	04-01-00253
1750 NOS+ 100 SET	BATTERIES , CHARGERS AND CONVERTERS	04-01-00254
150 NOS + 100 SET.	SWITCH YARD EQUIPMENT	04-01-00255
4 UNITS	REHABILITATION AND ENGINEERING SERVICES	04-01-00256

SECTION A 24 - DIBIS GAS TURBINE POWER STATION

QTY	ITEM	Code
3000 NOS. 400 SETS	TURBINE AND COMPRESSOR BLADES MOVING STATIONARY WITH ACCESSORIES	04-01-00257
1000 NOS. + 400 SETS	INNER CASING AND HOT PATH EQUIPMENT	04-01-00258
2000 NOS.+ 500 SETS	COMBUSTION EQUIPMENT AND ACCESSORIES	04-01-00259
1000 NOS.+ 500 SETS	GAS UNITS STARTING DEVICE	04-01-00260
250 NOS+ 100 SET	CONTROL , MEASURMENT AND PROTECTION SYSTEMS.	04-01-00261
4000 NOS+100 SET	GENERATOR , EXCITATION AND ACCESSORIES	04-01-00262
2000 NOS + 1000 SET	PUMPS , MOTORS AND ROTARY MACHINES	04-01-00263
2000 NOS + 50 UNITS.	BATTERIES , CHARGERS AND CONVERTERS	04-01-00264
1000 NOS.+500 SET	SWITCH YARD EQUIPMENT	04-01-00265
3 UNTS	REHABILITATION AND ENGINEERING SERVICES	04-01-00266

SECTION A 25 – PETRO CHEMICAL GAS UNITS

QTY	ITEM	Code
1000 NOS. 4 SETS	TURBINE AND COMPRESSOR BLADES WITH ACCESSORIES	04-01-00267
500 NOS.+ 4 SETS	HOT PATH AND COMBUSTION EQUIPMENT AND ACCESORIES	04-01-00268
500 NOS+10 SETS	GAS UNITS STARTING DEVICE	04-01-00269
500 NOS.	CONTROL , MEASURMENT AND PROTECTION SYSTEMS.	04-01-00270
750 NOS+ 5 UNITS	GENERATOR , EXCITATION AND ACCESSORIES, BATTERY CHARGERS AND CONVERTERS	04-01-00271
1500 NOS+5 SETS	PUMPS , MOTORS , ROTARY MACHINES, FILTERS	04-01-00272
4 UNITS	REHABILITATION AND ENGINEERING SERVICES	04-01-00273

SECTION A 26 – YOUSIFIYA POWER STATION (6 X 210) MW

QTY	ITEM	Code
6 UNITS	COMPLETE POWER STATION WITH ALL AUXILIARY UNITS AND SERVICES.	04-01-00274

SECTION A 27 – AL- ANBAR POWER STATION (6X300) MW

QTY	ITEM	Code
6 UNITS	COMPLETE POWER STATION WITH ALL AUXILIARY UNITS AND SERVICES	04-01-00275

SECTION A 28 - NORTH POWER STATION (2X 350 MW)

QTY	ITEM	Code
2 UNITS	COMPLETE BOILERS & ACCESSORIES	04-01-00276
2 UNITS	COMPLETE TURBINE & ACCESSORIES	04-01-00277
2 UNITS	COMPLETE GENERATOR & ACCESSORIES	04-01-00278
1 UNIT	WATER TREATMENT PLANT & ACCESSORIES	04-01-00279
LOT	SWITCH YARD EQUIPMENT AND ACCESSORIES	04-01-00280
2 UNITS	SUPPLY, ERRECTION, FITTING EQUIPMENT AND ALL GENERAL SYSTEMS. SUPPLY OF GAS , HEAVY AND LIGHT OIL SYSTEMS AND DISCHARGE SYSTEM , OIL CARRIER TRUCK AND ALL OTHER ACCESSORIES .	04-01-00281
2 UNITS	SUPPLY OF COOLING EQUIPMENT WITH ACCESSORY EQUIPMENT AND CIVIL ENGINEERING MATERIALS	04-01-00282

2 UNITS	SUPPLY OF HYDROGEN AND OXEGEN GENERATION EQUIPMENT AND COMPRESSORS WITH OTHER ACCESSORIES. FIRE FIGHTING EQUIPMENT .	04-01-00283
2 UNIT	SUPPLY OF ALL TRANSFORMERS NEEDED FOR THE TWO UNITS.	04-01-00284
2 UNIT	SUPPLY OF WATER INTAKE PUMPING FROM THE RIVER. WATER TREATMENT PLANT, VALVES AND ALL ACCESSORIES	04-01-00285
2 UNIT	PROJECT CONSULTAION AND WORK COORDINATION AND INSPECTION	04-01-00286
2 UNIT	SUPPLY OF AUTOMATIC CONTROL AND ELECTRICAL EQUIPMENT	04-01-00287

SECTION A 29 - SALAH AL-DEEN POWER STATION (4 X 300 MW)

CODE	ITEM	QTY
04-01-00288	ENGINEERING AND CAMP FACILITIES WITH CIVIL ENGINEERING MATERIALES FOR CONSTRUCTION THE PROJECT	4 UNIT
04-01-00289	SUPPLY EQUIPMENT AND SERVICES FOR TWO UNITS FIRST STAGE (2 X 300 MW)	2 UNIT
04-01-00290	SUPPLY OF TWO UNITS (2 X 300 MW) AS SECOND STAGE	2 UNIT

SECTION A 30 - GAS TURBINE UNITS

CODE	ITEM	QTY
04-01-00291	GAS TURBINE UNITS WITH ACCESSORIES (FRAME 9 OR EQUIVALENT) COMBINED CYCCLE .	6 UNIT
04-01-00292	GAS TURBINE UNITS WITH ACCESSORIES (FRAME 6 OR EQUIVALENT) .	6 UNIT

SECTION A 31 - MOBILE GAS TURBINE

CODE	ITEM	QTY
04-01-00293	MOBILE GAS TURBINE WITH ACCESSORIES (25 MW*)	50 UNITS

* amended 12 November 99

SECTION B 32 - TRANSMISSION NETWORK

QTY	ITEM	Code
2500 SETS + 1000 PCS	SWITCH GEARS	04-01-00294
50 UNITS+1500 SET	TRANSFORMERS AND SPARE PARTS	04-01-00295
3000sets+5051pieces	CIRCUIT BREAKERS AND SPARE PARTS	04-01-00296
3000 SETS + 1000 NOS.	DC POWER SUPPLY EQUIPMENT	04-01-00297
500 SETS	TESTING EQUIPMENT	04-01-00298
10000 PCS.+ 2000 NOS.	ELECTRICAL POWER SUPPLY CENTER SPARES	04-01-00299
5000 SETS+10000 NOS	TRANSMISSION LINES SPARES	04-01-00300
LOT	BAGHDAD EAST-BAGHDAD SOUTH 400KV LINE EQUIPMENT	04-01-00301
LOT	BAGHDAD EAST- DIYALA – TAMEEM 400KV LINES EQUIPMENT	04-01-00302
20 UNITS	MOBILE SUBSTATION 132/33KV 15MVA or 25MVA	04-01-00304
20 UNITS	MOBILE SUBSTATION 132/11KV 10MVA OR 25MVA	04-01-00305
140 SET	POWER LINE CARRIER COMMUNICATION EQUIPMENT	04-01-00306
1000 PCS	WIRELESS EQUIPMENT FOR MOBILE COMMUNICATION	04-01-00307
100 SET	PILOT CABLE CARRIER COMMUNICATION EQUIPMENT	04-01-00308
100 SET	SWITCHING COMMUNICATION EQUIPMENT	04-01-00309
280 SET	VHF / MW COMMUNICATION EQUIPMENT	04-01-00310
50 SET+ 100 NOS	FIBER OPTICS COMMUNICATION EQUIPMENT	04-01-00311
3000 KM	FIBER OPTICS COMMUNICATION CABLES	04-01-00312
50 PCS	TEST EQUIPMENT FOR COMMUNICATION SYSTEMS	04-01-00313
	<u>TRANSMISSION AND DISTRBUTION NETWORK MATERIALS AND ACCESSORIES</u>	
1500 NOS	- TOWERS	04-01-00314
100000 NOS	- INSULATORS	04-01-00315
20000 KM + 10000 TON	- WIRES OF ALUMINIUM AND COPPER	04-01-00316
5000 TON	- GRAIN ORIENTED SILCON STEEL	04-01-00317
1500 TON	- ENAMILING WIRES	04-01-00318
2000 TON	- INSULATION PAPERS	04-01-00319
3000 TON	- P.V.C. FOR SHEATING AND INSULATION	04-01-00320
5000 TON	-LEADS ALLOY	04-01-00321
100000 PCS+ 10000 SET	- ACCESSORIES	04-01-00322
1000 SET + 1,000* NOS.	POWER TRANSFORMERS MATERIALS AND ACCESSORIES	04-01-00323
10 SET	EQUIPMENT AND MATERIALS FOR REPAIR WORKSHOP OF POWER TRANSFORMERS TO COVER THE FOLLOWING:- POSITIVE PRESSURE EQUIPMENT , DRY AIR FACILITIES , LIFTING FACILITIES AND MATERIALS AND TOOLS .	04-01-00324
4 NOS	ELECTRICITY DISPATCH CENTERS (REHABILITATION AND INSTALLATION OF NEW CENTERS)	04-01-00325

* amended 21 September 99

LOT	REHABILITATION AND INSTALLATION OF NEW TELECOMMUNICATION EQUIPMENT FOR VOICE, DATA COMMUNICATION AND POWER LINE PROTECTION	04-01-00326
10000 TON	ALUMINIUM INGOT FOR PRODUCTION OF ACSR ELECTRICAL POWER TRANSMISSION LINES	04-01-00327
10000 TON	STEEL REINFORCEMENT CABLES FOR ELECTRICAL POWER TRANSMISSION LINES	04-01-00328
3 UNITS	NEW SUBSTATION 132/33/11 KV FOR (MOUSEL-MANSOUR) AND (HADITHA) , (GHAMMAS)	04-01-00329
3 UNITS	EXTENTION OF EXISTING SUBSTATION 132/33/11 KV FOR (TAJI) (BAB AL- ZUBAIR) (HINDIYA BARRAGE)	04-01-00330
2500 SET + 500 NOS	TRANSDUCER AND METERING EQUIPMENT	04-01-00331
150000 SET + 2000 NOS	SWITCH YARD EQUIPMENT AND ACCESSORIES	04-01-00332
150000 SET + 2000 NOS.	SUBSTATION MAINTENANCE EQUIPMENT	04-01-00333
500 SET + 1000 PCS.	OIL AND SF6 PURIFIRE EQUIPMENT	04-01-00334

SECTION B 33 – TRANSPORTATION LIFTING AND HANDLING VEHICLES

QTY	ITEM	Code
250 NOS	CARS, PICKUPS, LORRIES	04-01-00335
400 NOS	CRANES AND LIFTING DEVICES	04-01-00336
16 NOS	TANKERS FOR CHEMICAL TRANSPORTATION AND FOR WATER TREATMANT	04-01-00337
20 NOS	AMBULANCE CARS	04-01-00338
50 NOS	FIRE FIGHTING VEHICLES	04-01-00339

SECTION C 34- DISTRIBUTION NETWORK

QTY	UNIT	ITEM	Code
1000	KM	CABLE XLPE 3X150 11 KV	04-01-00340
25	KM	CABLE XLPE 3X150 33 KV	04-01-00341
3000	PCS	STRAIGHT JOINT 1X400MM2 33 KV	04-01-00342
1000	PCS	TERMINATION 1X400MM2 33 KV (OUTDOOR)	04-01-00343
1500	PCS	STRAIGHT JOINT 3X150 MM2 33KV	04-01-00344
1000	PCS	TERMINATION JOINT 3X150 MM2 33KV (OUTDOOR)	04-01-00345
15000	PCS	STRAIGHT JOINT 3X150MM2 11KV	04-01-00346
500	PCS	TERMINATION JOINT 3X150 MM2 11KV	04-01-00347
300	PCS	STRAIGHT JOINT 400VOLT 3X120+70	04-01-00348
300	PCS	STRAIGHT JOINT 400VOLT 3X95+50	04-01-00349
300	PCS	STRAIGHT JOINT 400VOLT 3X70+35	04-01-00350
1000	PCS	STRAIGHT JOINT 400VOLT 3X240+120	04-01-00351
300	PCS	STRAIGHT JOINT 400VOLT 3X50+25	04-01-00352
3000	SET	CUT -OUT FUSE 11KV WITH THE FUSES	04-01-00353
30000	PCS	ELEMENT FUSE 20-40&60 AMP.	04-01-00354
450*	PCS	(ON -LOAD) LINE ISOLATOR 11kv	04-01-00355
20000	PCS	PORCELAIN PIN TYPE INSULATORS WITH GALVANIZED STEEL SPINDLE 33 KV LONG TYPE	04-01-00356
50000	PCS	PORCELAIN PIN TYPE INSULATORS WITH GALVANIZED STEEL SPINDLE 11 KV LONG TYPE	04-01-00357
30000	PCS	DISC INSULATORS FOR 11KV	04-01-00358
10000	PCS	DISC INSULATORS FOR 11KV -SOCKET EYE	04-01-00359
10000	PCS	DISC INSULATORS FOR 11KV -SUSPENSION CLAMP	04-01-00360
10000	PCS	DISC INSULATORS FOR 11KV -TENSION CLAMP	04-01-00361
10000	PCS	DISC INSULATORS FOR 11KV - BALL EYE	04-01-00362
50000	PCS	SHACKLE INSULATORS WITH D- IRON &2 BOLTS	04-01-00363
500	PCS	DOUBLE SECTION ROPE OPERATED LADDERS (FIBER GLASS) 2X4.5 M & 2X6M	04-01-00364
4	PCS	CABLE TESTING VAN	04-01-00365

* amended 30 November 99

15000	PCS	L.T SWITCH BOARD FOR TR.250 KVA (OUTDOOR)	04-01-00366
26,000³	SHEETS	- SHEET PLATE 4X8 FT THICKNESS 1.25MM	04-01-00367
3000	SHEETS	- SHEET PLATE 4X8 FT THICKNESS 2.5MM	04-01-00368
45000	METER	- PVC INSULATED STRANDED BUSBAR 7.5X 20MM2	04-01-00369
120000	PCS	-THROUGH TYPE TERMINALS WITH INSULATING BODY OF DURO PLASTIC. TERMINAL SIZE 95MM2	04-01-00370
330000	PCS	-CABLE SHOE TERMINAL FOR CABLE SIZE 95MM2	04-01-00371
130,000^{**}	PCS	-CABLE GLANDS FOR CABLE SIZE OF 95MM2	04-01-00372
15750	PCS	-CIRCUIT BREAKER 250 AMP 4POLE	04-01-00373
	PCS	11/0.4KV DIST . TRANSFORMERS	04-01-00374
520		-100	
3466		-250	
694		-400	
346		-630	
174		-1000 KVA	
650	TON	- GRAIN ORIENTED SILICON STEEL CODE NO.R001	04-01-00375
500	TON	- COLD ROLLED CARBON STEEL STRIP CODE NO. ROO3, ROO 4 &ROO6	04-01-00376
250	TON	- COPPER WIRE CODE NO. R210,R158,R162,R165,R166, R153,R156 &R157	04-01-00377
325	TON	- COPPER STRIP CODE NO.R138,R139,R140,R144,R146,R151, &14 3	04-01-00378
75	PCS	- BULK TYPE BUSHING CODE NO.P203,P207 &P208	04-01-00379
2600	PCS	-TAP CHANGER CODE NO.P506&P507	04-01-00380
4000	M	- CORRAGATE STEEL WIRE CODE NO.R178&R179	04-01-00381
3000	M	- FLEXIBLE INS. WIRE CODE NO.R185,R187,R189 &R182	04-01-00382
500	M	- CAMBRIC INS. WIRES CODE NO.R196	04-01-00383
800	KM	ACSR-BARE WIRE : 210/35 MM2	04-01-00384
5000	KM	ACSR-BARE WIRE : 120/20MM2	04-01-00385
1500	KM	ACSR-BARE WIRE : 95/15MM2	04-01-00386
1500	KM	AAC-BARE WIRE : 95MM2	04-01-00387
3000	KM	AAC-BARE WIRE : 70MM2	04-01-00388
1500	KM	AAC-BARE WIRE : 50MM2	04-01-00389
500	KM	AAC-BARE WIRE : 35MM2	04-01-00390

³ amended 20 January and 17 July 2000

^{**} amended 20 January 2000

800	MT.	- COPPER ROD DIA . 8 MM	04-01-00391
2700	MT.	- ALUMINIUM ROD DIA 9.5 MM	04-01-00392
800	MT.	- ALUMINIUM SLAB A4	04-01-00393
400	MT.	- ALUMINIUM INGOT A5L	04-01-00394
500	MT.	- LEAD ALLOY FOR CABLE SHEATHING	04-01-00395
300	T.	- PVC COMPOUND FOR SHEATHING OF POWER CABELS	04-01-00396
100	T.	- PVC COMPOUND FOR FILLING OF POWER CABELS	04-01-00397
20	T.	- COLOUR MASTERBATCHES FOR PVC COMPOUND	04-01-00398
500	MT.	- GALVANIZED STEEL CORES FOR CONDUCTORS DIA 7.5MM AND 5.7MM .	04-01-00399
500*	T.	GALVANIZED STEEL CORES FOR CONDUCTORS DIA 5.1MM .	04-01-00400
		<u>GALVANIZED STEEL TAPE FOR CABEL ARMURING</u>	
150	T.	DIA 25X0.3 MM	04-01-00401
150	T.	DIA 30X0.3 MM.	04-01-00402
150	T.	DIA 40X0.3 MM.	04-01-00403
150	T.	DIA 50X0.3 MM.	04-01-00404
		<u>ALUMINIUM TAPE WITH PE-OMPOLYMER COATING</u>	
25	MT.	DIA 37X0.15 MM	04-01-00405
25	MT.	DIA 46X0.15 MM	04-01-00406
20	MT.	DIA 55X0.15 MM	04-01-00407
20	MT.	DIA 69X0.15 MM	04-01-00408
100	MT.	- ALUMINIUM MAGENSIUM SILICON ALLOY	04-01-00409
60000	PCS	KWH -METERS (1Ph) 40 AMP	04-01-00410
50000	PCS	KWH- METERS (3Ph) 3(20-60)AMP	04-01-00411

* amended 3 November 99

10	TON	- ELE. STEEL A1 0.5X83.5 CODE NO. R500	04-01-00412
12	TON	- ELE. STEEL A1 0.5X88 CODE NO.R502	04-01-00413
2	TON	- STEEL T=2MM CODE NO. R504	04-01-00414
10	TON	- STEEL IN COIL 2X12 CODE NO. R505	04-01-00415
2	TON	- STEEL T=3MM CODE NO. R506	04-01-00416
1	TON	-FREE CATTING STEEL DIA.4MM CODE	04-01-00417
1	TON	NO.R509	04-01-00418
2	TON	- FREE CATTING STEEL DIA. 4.5MM CODE	04-01-00419
2	TON	NO. R510	04-01-00420
2	TON	- FREE CATTING STEEL DIA. 5MM CODE	04-01-00420
4	TON	NO. R511	04-01-00421
4	TON	- FREE CATTING STEEL DIA. 5.5MM CODE	04-01-00421
4	TON	NO. R512	04-01-00422
4	TON	- FREE CATTING STEEL DIA .6MM CODE	04-01-00422
1	TON	NO. R513	04-01-00423
17	TON	- FREE CATTING STEEL DIA. 7MM CODE	04-01-00424
2	TON	NO. R514	04-01-00425
35000	PCS	-COPPER COIL 0.5X50 CODE NO. R518	04-01-00426
112000	PCS	-COPPER WIRE 0.14 CODE NO. R523	04-01-00427
100000	PCS	-MAGNET ALLOY STEEL IN COIL CODE NO.	04-01-00428
2000	PCS	R417	04-01-00429
170000	PCS	-MAJ-ADJ PLATE CODE NO. 190 5300	04-01-00430
158000	PCS	- COIL WEDG CODE NO. 193 1113	04-01-00431
126000	PCS	- BRACKET CODE NO. 196 1866	04-01-00432
106000	PCS	-POLE EXTENSION CODE NO. 198 1342	04-01-00433
107000	PCS	-BRACKET CODE NO. 198 1455	04-01-00434
220000	PCS	- SPRING CODE NO. 213 1245 & 213 1368	04-01-00435
89000	PCS	- RUBBER PIECE CODE NO. 219 5300	04-01-00436
68000	PCS	-WHEEL CODE NO. 227 0177 , 227 2691 & 227 2692	04-01-00437
102035	PCS	- SPRING HOLDER CODE NO. 164 1097	04-01-00438
49000	PCS	- BUSH CL*ML CODE NO. 610 1935	04-01-00439
500000	PCS	- SELF LIGHT PIN CODE NO. 166 1287	04-01-00440
92000	PCS	- RIVET CODE NO. 168 1182	04-01-00441
138000	PCS	- INDUCTIVE SPINDLE CODE NO. 256 1144	04-01-00442
50000	PCS	- POST CODE NO. 257 5300	04-01-00443
220000	PCS	- SOLDERING PIN CODE 422 1376 & 422 1434	04-01-00444
218000	PCS	- MAGNET CODE NO. 440 1304	04-01-00445
209000	PCS	- BEARING MAGNET CODE NO. 440 1282 & 440	04-01-00446
297000	PCS	1416	04-01-00447
62000	PCS	- FRAME CODE NO. 120 1341	04-01-00448
67000	PCS	- BEARING ASSY CODE NO. 600 1301	04-01-00449
80000	PCS	- BUSH CODE NO. 600 1380	04-01-00450
37000	PCS	- LOW LOAD VAIN CODE NO. 613 1286 ,613 1243	04-01-00451
60000	PCS	& 613 1331	04-01-00452
120000	PCS	- POLE PLATE CODE NO. 613 1371	04-01-00453
120000	PCS	- COUNTER POLE CODE NO. 613 2005	04-01-00454
	PCS	- SINGLE TARIF REGISTOR CODE NO. 701 1180 &	
	PCS	710 1184	
	PCS	- POLE PLATE CODE NO. 613 1370	
	PCS	-TERMINAL ALLOY ML CODE NO.616 1115	
	PCS	-TERMINAL ALLOY CL CODE NO.616 1113	
	PCS	-SCREW CODE NO.150 2344	
	PCS	-TERMINAL BLOCK CODE NO.401 1892	

400	KM	400 VOLT TWISTED CABLES 3X95+50+16 & 3X70+50+16	04-01-00455
300000	PCS	ACCESORIES FOR TWISTED CABLE	04-01-00456
251,080*	PCS	-LAMPS -125W -160W-250W&400W MERCURY	04-01-00457
80000	PCS	-LAMPS 150W- 250W & 400 W SODIUM	04-01-00458
100000	PCS	-LANTERNS FOR LAMPS -125W -160W-250W&400W MERCURY	04-01-00459
20000	PCS	-LANTERNS FOR LAMPS150W- 250 W& 400 W SODIUM	04-01-00460
40000	PCS	-CHOKES FOR LANTERNS FOR LAMPS 125 & 400W MERCURY	04-01-00461
10000	PCS	-CHOKES FOR LANTERNS FOR LAMPS 150W-250W & 400 W SODIUM	04-01-00462
60000	PCS	- IGNITOR FOR LAMPS 400W SODIUM	04-01-00463
6000	PCS	- PHOTO ELECTRICAL CELL	04-01-00464
10000	PCS	- COMPLETE OUTDOOR CABINET FOR LIGHTING CONTROL POLE MOUNTED : SINGLE PHASE 230V , 80 AMP & THREE PHASE 400V , 100AMP	04-01-00465

CODE	DESCRIPTION	QTY	UNIT
04-01-00466**	SINGLE POLE CIRCUIT BREAKER 63 AMP 220V.	6600	PCS
04-01-00467**	3 POLE CONTACTORS :-RATING AC3 -40 AMP with stand rail and screws	6600	PCS
04-01-00468**	PCS TOGGLE SWITCH -ON-OFF-ON	40,000	PCS
04-01-00469	RELAY P.C.B. MONOPHASE SPDDT CONTACT 220 V	40,000	PCS
04-01-00470**	THREE PHASE CIRCUIT BREAKER 80 AMP WITH CONNECTING TERMINALS	4,500	PCS
04-01-00471**	CABLE GLANDS SUITABLE FOR CABLE 4X25MM2	9,500	PCS
04-01-00472**	CONTACTOR 3 POLE AC3-80 AMP 220V/240V	9,500	PCS
04-01-00473**	FLEXIBLE P.V.C INSULATED WITH 6, 10 & 16 MM2	200,000	M
04-01-00474**	I.C.L M 741 WITH LIGHT DEPENDENT RESISTOR	30,000	PCS
04-01-00475	AC CAPACITORS (METALISED FILM)	40,000	PCS
04-01-00476**	CABLE GLANDS SUITABLE FOR CABLE SIZE 2X25 MM2	14,000	PCS

8400	PCS	- CABLE GLANDS SUITABLE FOR CABLE SIZE 4X16 MM2	04-01-00477
4200	PCS	- CABLE GLANDS SUITABLE FOR CABLE SIZE 3X25 +1X16 MM2	04-01-00478

* amended 6 December 99

** Amended 26 January 2000

<u>SPARE PARTS FOR S/S:</u>			
100	PCS	- CIRCUIT BREAKER 12KV, 630A, 25K, FG2, SF6	04-01-00479
100	PCS	- CIRCUIT BREAKER 12KV, 630A, 25K,LF2, SF6	04-01-00480
250	PCS	- POLE OF C.B 12KV, 630A, 25K, FG2, SF6	04-01-00481
90	PCS	- 11 KV CURRENT TRANSFORMER 150-300/5/5 TCF 200A	04-01-00482
50	PCS	- 11 KV CURRENT TRANSFORMER 300-600/5/5 TCF 200A	04-01-00483
100	PCS	- 11 KV V.T 11000/ 110 /3 /110 TYPE RTF 200F	04-01-00484
50	PCS	- RELAY IN VERSE INSTANTANOUS ITG 7291	04-01-00485
50	PCS	- BATTERY CHARGER 110V	04-01-00486
100	PCS	- ELECTRONIC CARDS OF CORODEL CHARGER TYPE SCE 270A	04-01-00487
50	PCS	- ELECTRONIC CARDS OF CORODEL CHARGER TYPE SCE 270C	04-01-00488
60	PCS	- BATTERY 110V NICKLE-CADMIUM 110AH CHLORIDE OR SAFTALKLINE (SET)	04-01-00489
320	PCS	- SOCAPEX, SCOKET REF 709551F (630A),759551A 91250A), 769620(2000A)	04-01-00490
600	PCS	- FUSE FOR VOLTAGE TRANSFORMER 0.5A	04-01-00491
300	PCS	- FLAG RELAY 110V D.C (FIR) DROP OUT	04-01-00492
150	PCS	- FLAG RELAY 110V D.C (FIR) PIK UP	04-01-00493
25	PCS	- CIRCUIT BREAKER 12KV ,2000A,25KA,FG2,SF6	04-01-00494
200	PCS	- TRIPING AND CLOSING COIL (887191)	04-01-00495
25	PCS	- POLE OF C.B. 12 KV,2000A,25KA,FG2,SF6	04-01-00496
150	PCS	- LVP/LOW VOLTAGE 37 PINS PLUG	04-01-00497
75	PCS	- OVER CURRENT O/C & EARTH FAULT E/F RELAY ITG 7271	04-01-00498
30	PCS	- OVER CURRENT O/C& EARTH FAULT E/F RELAY (TYPE ITG 7251)	04-01-00499
30	PCS	- EARTH FAULT RELAY (TYPE ITG 7113)	04-01-00500
20	PCS	- VOLTAGE EARTH FAULT RELAY (TYPE ITG 7114)	04-01-00501
10	PCS	- UNDER FREQUENCY RELAY (TYPE HTG 7012)	04-01-00502
18	PCS	- C.T . 1800/5.5- 0.578A (TYPE TC- F200)	04-01-00503
30	PCS	- ELECTRONIC TIME DELAY RELAY (TYPE 245.TE 110V D.C. 0.2 TO 180 SEC)	04-01-00504
30	PCS	- AUX. RELAY 110V D.C. (TYPE 259-49)	04-01-00505
15	PCS	- AUX. RELAY 110/ 3 (TYPE 245-481)	04-01-00506
50	PCS	- PUSH BUTTON (TYPE 22A)	04-01-00507
150	PCS	- L.V. CIRCUIT BREAKER 3-POLE 3AMP (TYPE C32 N)	04-01-00508
50	PCS	- POTENTIAL TESTER 1AMP	04-01-00509
30	PCS	- EARTHING RESISTANCE 21 OHM /300A/20SEC.	04-01-00510
60	PCS	- H.V.BUSHING FIXED TYPE (75051)36 KV & 630A WITH FLANGE MK 600 NOTICE 587 .	04-01-00511
15	PCS	- SOILD STATE VOLTAGE REGULATOR MK 20 .	04-01-00512
60	PCS	- H.V. BUSHING REMOVABLE PART TYPE 750 IR- 36KV(M.G.SUPPLY) NOTICE 90588.	04-01-00513
30	PCS	- HOREN 110 V D.C.25 WAAT (TYPE FL 35).	04-01-00514
12	PCS	- 33 KV V.T. 33000 / 110 50 VA GLASS 0.5 (TYPE TPF400).	04-01-00515

20	PCS	33/11KV SUB STATION (2X31.5 , ,2X10&2X16) MVA WITH TRANSFORMERS AND SPARE PARTS	04-01-00516
20	PCS	33/11KV MOBILE SUBSTATION (1X10 & 1X16) MVA	04-01-00517
100	SET	DIESEL GENERATORS (100-1500)KVA WITH RECOMMENDED SPARE PARTS &SPECIAL TOOLS.	04-01-00518
1000	PCS	KWH METER WITH M.D. 3X30-90A,400V - 3X50-150 A,400V -3X400/5C.T.,400V - 3X600/5,400 V-3X1000/5,400V -3X1600/5,400V & 3X250/5C.T. &V.T.	04-01-00519
250	PCS	- VHF COMMUNICATION EQUIPMENT (FIXED AND MOBILE)	04-01-00520
2500	M	- COAXIAL CABLE	04-01-00521
100	SETS	-SWITCHING EQUIPMENT	04-01-00522
100	SETS	- PILOT CABLE CARRIER COMMUNICATION EQUIPMENT	04-01-00523
20	SETS	- VHF / MW COMMUNIATION EQUIPMENT	04-01-00524
20	SETS	-TEST EQUIPMENT FOR COMMUNICATION SYSTEMS	04-01-00525
100	SETS	- POWER LINE CARRIER COMMUNICATION EQUIPMENT	04-01-00526
200	PCS	- BATTERY CHARGER 12 V .D.C.	04-01-00527
120	PCS	CASH MACHINE	04-01-00528
30	PCS	COMPUTERS AND PRINTERS	04-01-00529
100000	PCS	MINIATURE CIRCUIT BREAKER 20A, 40A& 60A	04-01-00530
4	PCS	CRANE 80 TON	04-01-00531
22*	PCS	BEAMLIFTER TRUCKS 15** , 25M* , 22M , & 35M*	04-01-00532
30	PCS	TRUCK WITH LIFTER FOR TRANS FORMERS.	04-01-00533
20	PCS	EXCAVATION EQUIPMENT	04-01-00534
24	PCS	33/11KV POWER TRANSFORMERS 5,10,16 & 31.5 MVA	04-01-00535
15000	PCS	LATTICE STEEL POLES 9 & 11M	04-01-00536
5000	TON	- I BEAM STEEL 51OR 52 OR ANY OTHER EQUIVALENT STANDARD WITH 140 MM(IPN) & 120 MM(IPN)	04-01-00537
600	TON	- STEEL ANGLE 30X30X3 MM	04-01-00538
90	TON	- PLATE THICKNESS 6MMX75MM	04-01-00539
30000	PCS	TUBLER STEEL POLES 9&11 M	04-01-00540
250	TON	-STEEL PIPES SIZE 88.9 X 3.3 LENGTH 2300 M	04-01-00541
250	TON	-PIPES SIZE 114.3 X3.6 LENGTH 2650 M	04-01-00542
1200	TON	-STEEL PIPES SIZE 139.7 X4.5 LENGTH 4700 M	04-01-00543
500	TON	-STEEL PIPES SIZE 114.3 X4.5 LENGTH 2800 M	04-01-00544
400	TON	-STEEL PIPES SIZE 139.7 X4.5 LENGTH 3350 M	04-01-00545
1500	TON	-STEEL PIPES SIZE 165 X4.5 LENGTH 5500 M	04-01-00546

* amended 1 September 99

** amended 22 February 2000

10000	PCS	STREET LIGHTING POLES	04-01-00547
2125	PCS	TOWERS TYPE 1C ,1C+3,1C2, 1E, 1E+3 ,1EC ,1H, 1H+3 ,1HC & 1L	04-01-00548
2000	SET	LIGHTNING ARRESTERS 11KV	04-01-00549
20,500	PCS	SPARE PARTS FOR S/S 33/11KV and capacitorbanks³	04-01-00550
15000	PCS	SPARE PARTS FOR SIEMENS NETWORK	04-01-00551
3000	PCS	HRC FUSES 11KV (40,63,80&100) AMP	04-01-00552
LOT	LOT	REHABILITATION& INSTALLATION OF NEW TELECOMMUNICATION EQUIPMENT FOR VOICE, DATA AND PROTECTION OF POWER LINES	04-01-00553
20	NOS	ELECTRICITY DESPATCH CENTERS (REHABILITATION & INSTALLATION OF NEW CENTERS)	04-01-00554
680	NOS	CARS,PICKUPS , LORRIES	04-01-00555
10	NOS	TRUCK TANKERS	04-01-00556
25	NOS	REFRIGERATION VEHICLES FOR PRODUCT TRANSPORT	04-01-00557
10	NOS	RECOVERY TRUCK	04-01-00558
10	NOS	TOW CAR FOR SHIFTING OF DAMAGED VEHICLES	04-01-00559
30000	PCS	MCCB 400VOLT 3 PHASE (25,40& 60)AMP	04-01-00560
100	PCS	11/0.4 KIOSK SUBSTATION 250** -1000 KVA WITH** TRANSFORMER	04-01-00561
1500	PCS	LOW TENSION PILLERS	04-01-00562
20000	PCS	LOW TENSION METER BOX	04-01-00563
55	KM	L.V. CABLE 3X240+120 MM2 ARMORD & L.V CABLE 4X25 MM2 UN ARMORD	04-01-00564
30	KM	L.V. CABLE 4X185 MM2 ARMORD	04-01-00565
60	KM	L.V. CABLE 3X150+70 MM2 ARMORD & L.V CABLE 4X10 MM2 UNARMORD	04-01-00566
65	KM	L.V. CABLE 3X95+50 MM2 ARMORD & L.V CABLE 2X2,5 MM2 UN ARMORD	04-01-00567
50	KM	L.V. CABLE 4X70 MM2 ARMORD & L.V CABLE 2X1,5 MM2 UN ARMORD	04-01-00568
85	KM	L.V. CABLE 4X16 MM2 ARMORD & L.V CABLE 4X16 MM2 UN ARMORD	04-01-00569
50,000*	PCS	BI- METAL CONNECTOR (210/120) -95/50	04-01-00570
100,000*	PCS	BI- METAL CONNECTOR (95/50) -25/10	04-01-00571
200**	PCS	CIRCUIT BREAKER 11KV WITH SPARE PARTS	04-01-00572

³ amended 30 May 2000

* amended 3 November 99

** amended 6 December 99

SECTION D 35- TRAINING PROGRAMMES

QTY	ITEM	Code
	<u>TRAINING AND SIMULATION EQUIPMENT TO COVER THE FOLLOWING ACTIVITIES:</u>	
10 SET	- GENERATION , TRANSMISSION AND DISTRIBUTION OF ELECTRICITY.	04-01-00573
10 SET	- MANUFACTURING OF POWER AND DISTRIBUTION TRANSFORMERS.	04-01-00574
10 SET	- MANUFACTURING OF CONDUCTORS FOR TRANSMISSION AND DISTRIBUTION OF ELECTRICITY.	04-01-00575
10 SET	- MANUFACTURING OF CONDUCTORS FOR TRANSMISSION AND DISTRIBUTION OF ELECTRICITY.	04-01-00576
5 SET	- MANUFACTURING OF TOWERS FOR 400 KV AND 132 KV TRANSMISSION LINES.	04-01-00577
LOT	- OTHER SUPPORTING ACTIVITES TO THE ELECTRICAL SECTOR.	04-01-00578
10 SET	COMPUTARIZED DISPLAY FACILITIES FOR TRAINING PURPOSES.	04-01-00579
5 NO.	TEACHING LABORATORIES.	04-01-00580
20 SET	TRAINING AIDS AND TOOLS.	04-01-00581
200 MAN - MONTH	TRAINING COURSES	04-01-00582