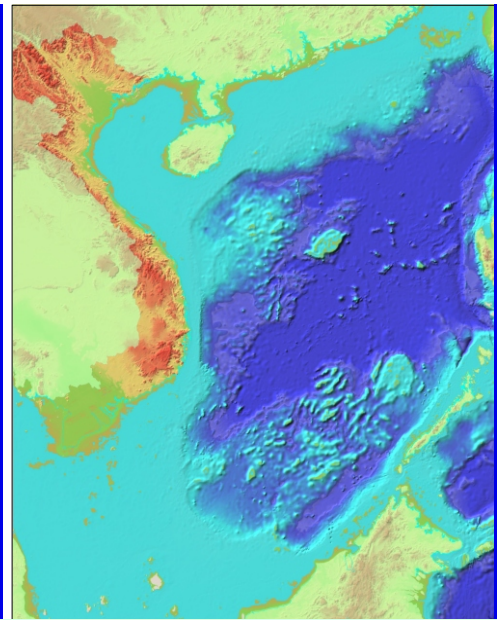




**SOCIALIST REPUBLIC OF VIETNAM**

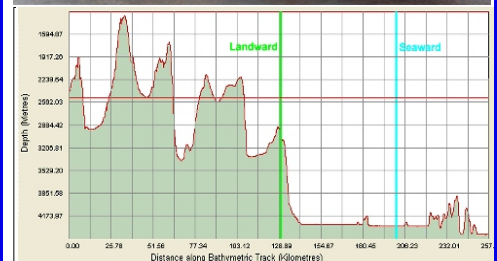
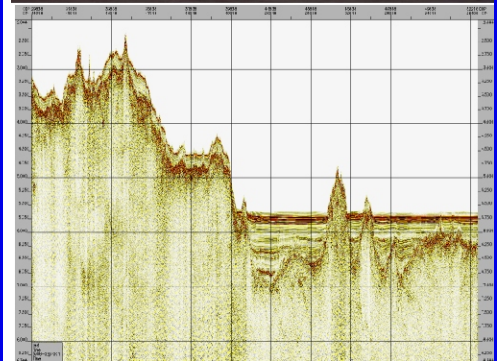


**SUBMISSION TO THE COMMISSION ON THE LIMITS OF THE CONTINENTAL SHELF  
PURSUANT TO ARTICLE 76, PARAGRAPH 8 OF THE UNITED NATIONS CONVENTION ON THE LAW OF THE SEA 1982  
PARTIAL SUBMISSION IN RESPECT OF VIETNAM'S EXTENDED CONTINENTAL SHELF: NORTH AREA (VNM-N)**

**PART I - EXECUTIVE SUMMARY**

**VNM-N-ES-DOC**

**APRIL 2009**



**ISBN 978-604-9800-01-6**



**SOCIALIST REPUBLIC OF VIETNAM**

Bathymetric map of the East Sea

**SUBMISSION TO THE COMMISSION ON THE LIMITS OF THE CONTINENTAL SHELF  
PURSUANT TO ARTICLE 76, PARAGRAPH 8 OF THE UNITED NATIONS CONVENTION ON THE LAW OF THE SEA 1982**

**PARTIAL SUBMISSION IN RESPECT OF VIETNAM'S EXTENDED CONTINENTAL SHELF: NORTH AREA (VNM-N)**

**PART I - EXECUTIVE SUMMARY  
VNM-N-ES-DOC**

The following departments and agencies of the Government of the Socialist Republic of Vietnam are responsible to this submission :

- Ministry of Foreign Affairs
- Ministry of Natural Resources and Environment
- Ministry of Science and Technology
- Institute of Marine Geology and Geophysics
- Institute of Geography
- Department of Survey and Mapping of Vietnam
- Hydrographic Survey and Mapping Department, Vietnam Navy
- PetroVietnam

Scientific and Technical Advisors: National Oceanography Centre, Southampton,UK

© The Government of the Socialist Republic of Vietnam 2009

**APRIL 2009**

Seismic survey vessel used by Vietnam

Part of cross seismic section

Vietnamese Hydrographic survey vessel

Part of bathymetric section

ISBN 978-604-9800-01-6

## TABLE OF CONTENTS

1. Introduction .....	2
2. Specific provisions of Article 76 invoked to support the Submission .....	3
3. Names of Commission members who provided advice during the preparation of the Submission.....	3
4. Absence of disputes .....	3
5. Detailed description of the outer limits of Vietnam’s extended continental shelf: North Area (VNM-N).....	3
6. State Agencies responsible for the preparation of the Submission .....	4
<b>Figure 1</b> Outer limits of the Vietnam’s extended continental shelf: North Area (VNM-N).....	5
<b>Table 1</b> Fixed points delineating the outer limits of the Vietnam’s extended continental shelf: North Area (VNM-N) .....	6

## **1. Introduction**

The Socialist Republic of Vietnam (Vietnam), one of the coastal States bordering the East Sea, has a coastline approximately 3,260 km in length and has sovereignty over Hoang Sa and Truong Sa archipelagoes as well as more than 3000 islands and islets covering a large part of the East Sea. Hoang Sa and Truong Sa archipelagoes are located in the North and in the South East of the East Sea respectively. Vietnam is of the view that it is entitled to exercise the sovereignty, sovereign rights and national jurisdiction in maritime zones and continental shelf of Vietnam in accordance with the United Nations Convention on the Law of the Sea (UNCLOS 1982).

The Socialist Republic of Vietnam signed UNCLOS 1982 on the 10<sup>th</sup> December 1982 and ratified the same on the 23<sup>rd</sup> June 1994.

Pursuant to the provisions of UNCLOS 1982 and the natural setting and characteristics of Vietnam's coast and continental shelf, Vietnam holds the views that it is entitled to establish the extended continental shelf beyond 200 nautical miles (M) from the baselines from which the breadth of the territorial sea of the Socialist Republic of Vietnam is measured.

In accordance with Paragraph 3 of Annex I to the Commission's Rules of Procedures, this Submission is a partial submission which delineates the outer limits of a portion of the continental shelf beyond 200 M from the baselines from which the breadth of the territorial sea of the Socialist Republic of Vietnam is measured in respect of Vietnam's extended continental shelf: North Area (VNM-N) appurtenant to Vietnam.

This Submission by the Socialist Republic of Vietnam on the extended continental shelf has been prepared using datasets acquired by dedicated surveys in 2007, 2008 and datasets from the public domain including bathymetry, magnetic, gravity and seismic data.

This Submission in respect of the VNM-N Area refers to an area defined as follows:

The Northern boundary is the equidistance line between the territorial sea baselines of Vietnam and the territorial sea baselines of the People's Republic of China; the Eastern and Southern boundaries are the outer limits of the continental shelf as defined

in this Submission pursuant to Article 76 (8) of the UNCLOS 1982; the Western boundary is 200 M limit from the baselines from which the breadth of the territorial sea of the Socialist Republic of Vietnam is measured.

## **2. Specific provisions of Article 76 invoked to support the Submission**

The outer limits delineated in this Submission are based on the provisions of Paragraphs 1, 4, 5 and 7 Article 76.

## **3. Names of Commission members who provided advice during the preparation of the Submission**

None of the members of the Commission on the Limits of the Continental Shelf (Commission) assisted Vietnam in the preparation of the Submission.

## **4. Absence of disputes**

In accordance with Paragraph 2(a) of Annex I to the Commission's Rules of Procedures, Vietnam wishes to inform the Commission that there is a common understanding that the area of continental shelf which is the subject of this Submission is of overlapping interests expressed by relevant coastal States. Nevertheless, subject to the provisions of UNCLOS 1982, Vietnam is of the view that the area of continental shelf that is the subject of this Submission is not a subject of any overlap and dispute.

Further, Vietnam wishes to assure the Commission that in accordance with Article 76(10) of the UNCLOS 1982, Article 9 Annex II to the UNCLOS 1982, Rule 46 and Annex I of the Commission's Rules of Procedure, this Submission is without prejudice to the maritime delimitation between Vietnam and other relevant coastal States.

Vietnam has undertaken efforts to secure the non-objection of the other relevant coastal States.

## **5. Detailed description of the outer limits of Vietnam's extended continental shelf: North Area (VNM-N)**

Vietnam has delineated the outer limits of the Vietnam's extended continental shelf: North Area (VN-N) by application of both 1% sediment thickness formula (the

Gardiner formula) and the Foot of the slope (FOS) + 60 M formula (the Hedberg formula).

Accordingly, 45 fixed points have been established which delineate the outer limits of the Vietnam's extended continental shelf: North Area (VNM-N). The outer limits are illustrated in Figure 1. The list of the geographical coordinates of the fixed points delineating the outer limits of the VNM-N Area and the lengths of the connecting straight lines are listed in Table 1.

## **6. State Agencies responsible for the preparation of the Submission**

This Submission, together with all maps, figures, tables, appendices and data bases were prepared by an interagency team consisting of:

Ministry of Foreign Affairs

Ministry of Natural Resources and Environment

Ministry of Science and Technology

Institute of Marine Geology and Geophysics

Institute of Geography

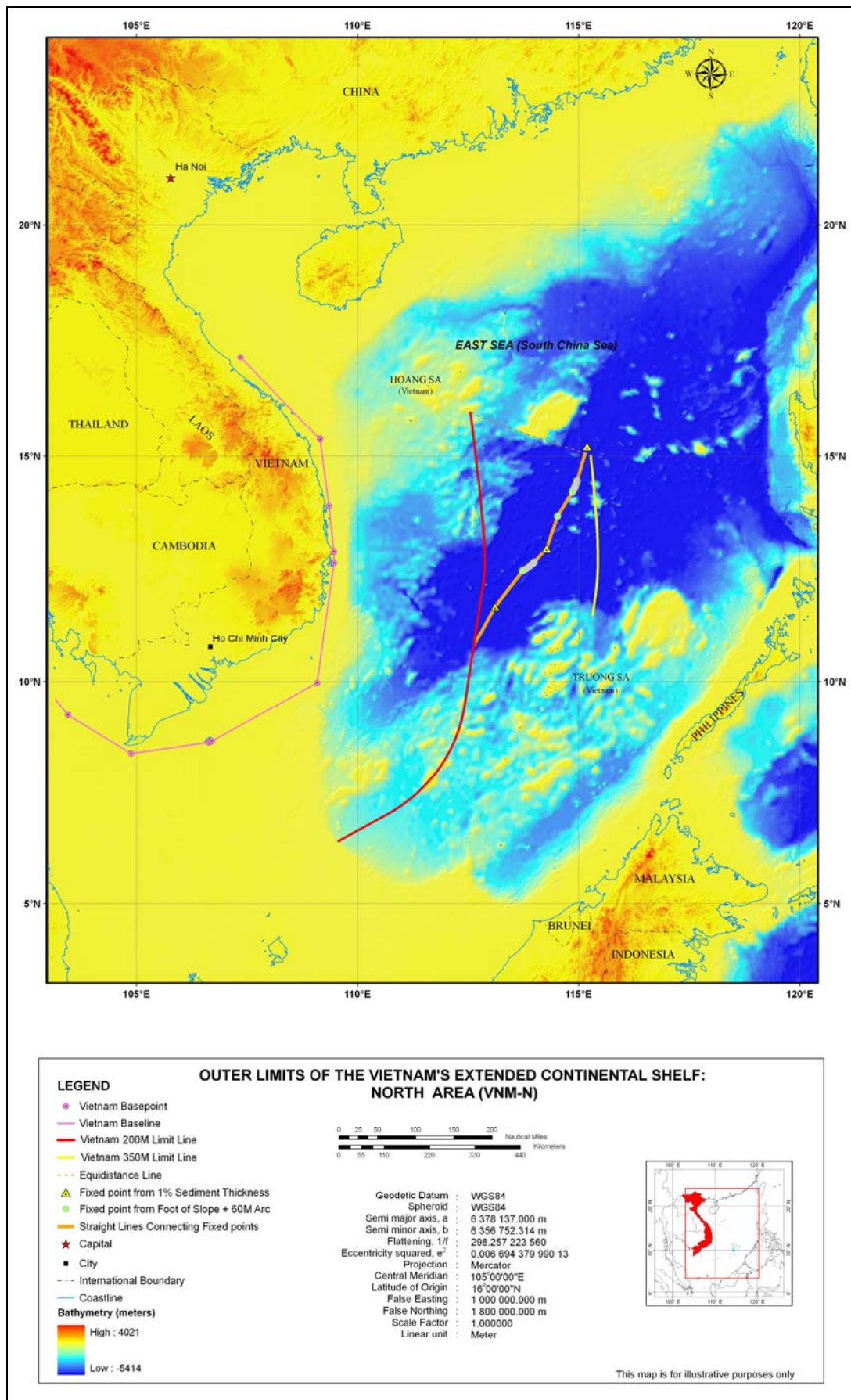
Department of Survey and Mapping of Vietnam

Hydrographic Survey and Mapping Department, Vietnam Navy

PetroVietnam

Scientific and Technical Advisors: National Oceanography Centre, Southampton, United Kingdom





**Figure 1** Outer limits of the Vietnam's extended continental shelf: North Area (VNM-N)

**Table 1** Fixed points delineating the outer limits of Vietnam’s extended continental shelf: North Area (VNM-N)

FP	Latitude (N)	Longitude (E)	Method	From FP	To FP	Distance (M)
1	15.06712679	115.1484514	Fixed point at intersection of formula line and equidistance line			
2	14.46148214	114.9690619	Fixed point from 60M envelope of arcs generated from FOS2	1	2	37.60
3	14.45774503	114.9679788	Fixed point from 60M envelope of arcs generated from FOS2	2	3	0.23
4	14.44171559	114.9630365	Fixed point from 60M envelope of arcs generated from FOS2	3	4	1.00
5	14.42576848	114.9578215	Fixed point from 60M envelope of arcs generated from FOS2	4	5	1.00
6	14.40990809	114.9523352	Fixed point from 60M envelope of arcs generated from FOS2	5	6	1.00
7	14.3941389	114.9465794	Fixed point from 60M envelope of arcs generated from FOS2	6	7	1.00
8	14.37846511	114.9405556	Fixed point from 60M envelope of arcs generated from FOS2	7	8	1.00
9	14.36289122	114.9342655	Fixed point from 60M envelope of arcs generated from FOS2	8	9	1.00
10	14.34742153	114.927711	Fixed point from 60M envelope of arcs generated from FOS2	9	10	1.00
11	14.33206016	114.920894	Fixed point from 60M envelope of arcs generated from FOS2	10	11	1.00
12	14.31681151	114.9138163	Fixed point from 60M envelope of arcs generated from FOS2	11	12	1.00
13	14.3016797	114.9064799	Fixed point from 60M envelope of arcs generated from FOS2	12	13	1.00
14	14.28666895	114.8988869	Fixed point from 60M envelope of arcs generated from FOS2	13	14	1.00
15	14.27178338	114.8910396	Fixed point from 60M envelope of arcs generated from FOS2	14	15	1.00
16	14.25702712	114.8829401	Fixed point from 60M envelope of arcs generated from FOS2	15	16	1.00
17	14.24240421	114.8745906	Fixed point from 60M envelope of arcs generated from FOS2	16	17	1.00
18	14.22791877	114.8659937	Fixed point from 60M envelope of arcs generated from FOS2	17	18	1.00
19	14.21357467	114.8571515	Fixed point from 60M envelope of arcs generated from FOS2	18	19	1.00
20	13.66737996	114.526433	Fixed point from 60M envelope of	19	20	37.90



			arcs generated from FOS3			
21	12.97168998	114.27286	Fixed point at 1% sediment thickness from FOS5	20	21	44.14
22	12.66783774	113.9938265	Fixed point from 60M envelope of arcs generated from FOS5	21	22	24.44
23	12.6654806	113.9916323	Fixed point from 60M envelope of arcs generated from FOS5	22	23	0.19
24	12.65548164	113.982325	Fixed point from 60M envelope of arcs generated from FOS5	23	24	0.81
25	12.64331504	113.9706166	Fixed point from 60M envelope of arcs generated from FOS5	24	25	1.00
26	12.63134108	113.9587045	Fixed point from 60M envelope of arcs generated from FOS5	25	26	1.00
27	12.61956318	113.9465919	Fixed point from 60M envelope of arcs generated from FOS5	26	27	1.00
28	12.6079845	113.9342823	Fixed point from 60M envelope of arcs generated from FOS5	27	28	1.00
29	12.59660836	113.9217792	Fixed point from 60M envelope of arcs generated from FOS5	28	29	1.00
30	12.58543782	113.9090858	Fixed point from 60M envelope of arcs generated from FOS5	29	30	1.00
31	12.57447594	113.8962057	Fixed point from 60M envelope of arcs generated from FOS5	30	31	1.00
32	12.56372577	113.8831425	Fixed point from 60M envelope of arcs generated from FOS5	31	32	1.00
33	12.55319028	113.8698999	Fixed point from 60M envelope of arcs generated from FOS5	32	33	1.00
34	12.54287234	113.8564816	Fixed point from 60M envelope of arcs generated from FOS5	33	34	1.00
35	12.53277482	113.842891	Fixed point from 60M envelope of arcs generated from FOS5	34	35	1.00
36	12.52290041	113.8291322	Fixed point from 60M envelope of arcs generated from FOS5	35	36	1.00
37	12.5132519	113.8152088	Fixed point from 60M envelope of arcs generated from FOS5	36	37	1.00
38	12.50383196	113.8011248	Fixed point from 60M envelope of arcs generated from FOS5	37	38	1.00
39	12.49464319	113.7868839	Fixed point from 60M envelope of arcs generated from FOS5	38	39	1.00
40	12.48568811	113.7724902	Fixed point from 60M envelope of arcs generated from FOS5	39	40	1.00
41	12.47696911	113.7579476	Fixed point from 60M envelope of arcs generated from FOS5	40	41	1.00

42	12.46848862	113.7432602	Fixed point from 60M envelope of arcs generated from FOS5	41	42	1.00
43	12.46035674	113.7286256	Fixed point from 60M envelope of arcs generated from FOS5	42	43	1.00
44	11.67141998	113.11072	Fixed point at 1% sediment thickness from FOS7	43	44	59.50
45	10.79843008	112.6262326	Fixed point on Vietnam's 200M limit	44	45	59.47