

Continental Shelf Submission of Namibia



EXECUTIVE SUMMARY

2009

Index

List of Figures	1
List of Tables	1
Introduction	1
Provisions of Article 76	1
State Bodies Responsible for the Preparation of the Submission	2
Participation of Commission Members	2
Boundaries of Adjacent States.....	2
The Outer Limit of the Extended Continental Shelf	3
Region-by-Region Overview.....	6
List of Outer Limit Fixed Points	9



List of Figures

Figure 1: Outer limit of the Extended Continental Shelf of Namibia showing the distinct provisions of Article 76 invoked.	4
Figure 2: The Extended Continental Shelf of Namibia and the total area claimed.	5
Figure 3: Detail of the outer limit of the Extended Continental Shelf of Namibia (from FCS W1 to W9).	6
Figure 4: Detail of the outer limit of the Extended Continental Shelf of Namibia (from FCS W10 to W25).	7
Figure 5: Detail of the outer limit of the Extended Continental Shelf of Namibia(W26, W27, W28 and from FCS M1 to M6).	8

List of Tables

Table 1: List of Outer Limit Fixed Points.	10
---	----



Introduction

The United Nations Convention on the Law of the Sea (hereinafter referred to as “UNCLOS”) was opened for signature at Montego Bay, Jamaica, on 10 December 1982. Article 306 of UNCLOS provides that UNCLOS is subject to ratification. In 1983 UNCLOS was ratified by the United Nations Council for Namibia, on behalf of Namibia. After the independence of the Republic of Namibia, existing international agreements including UNCLOS, continued to be in force and to be part of the law of Namibia in terms of Articles 143 and 144 of the Namibian Constitution. The Republic of Namibia passed the Territorial Sea and Exclusive Economic Zone of Namibia Act, 1990, Act No. 3 of 1990. This Act, *inter alia*, determined and defined the internal waters, territorial sea, contiguous zone, exclusive economic zone and continental shelf of Namibia in accordance with the provisions of UNCLOS.

Acknowledging the possibility of extending its sovereign rights over undersea territory peacefully and with the support of the International Community represented by the Member States of the United Nations, Namibia endeavored in a thorough effort to meet the requirements of UNCLOS. The Project involved, not only the elaboration of a detailed Desktop Study in order to find out the pertinence of Namibia’s claim, but also a dedicated oceanographic survey with state-of-the-art technology for the systematic data gathering and processing, which was further analyzed and interpreted onshore. All the information generated is contained in the 19 Annexes attached hereto which form an integral part of the Legal Continental Shelf Project of the Republic of Namibia.

All of this new information together with the previous data substantially increased the knowledge of the physiography, the geology and geophysics of the continental margin of Namibia, enabling the establishment of the UNCLOS legal parameters for the delineation of the outer limit of the extended continental shelf of the Republic of Namibia which comprises the seabed and subsoil of the submarine areas that extend beyond its territorial sea throughout the natural prolongation of its landmass to the outer edge of the continental margin as provided in Article 76 of UNCLOS.

Provisions of Article 76

The establishment of the outer edge of the continental margin of Namibia where it extends beyond 200 nautical miles from the baseline from which the territorial sea is measured has been done in accordance with the provisions of Article 76, paragraphs 3, 4(a)(ii) and 4(b) of UNCLOS. The outer limit of the extended continental shelf has been delineated by fixed points connected by straight lines not exceeding 60 nautical miles in length in accordance with the provisions of Article 76, paragraphs 5, 6 and 7 of UNCLOS. For ease of reference Article 76 has been reproduced and is attached hereto as Annex 19. In preparing this submission, Namibia complied with the requirements contained in the Scientific and Technical Guidelines as adopted by the Commission on the Limits of the Continental Shelf (CLCS/11 May 1999).

State Bodies Responsible for the Preparation of the Submission

The Government of the Republic of Namibia entrusted the Legal Continental Shelf Project with the Ministry of Lands and Resettlement. The Government established two Committees of senior officials, namely, the Technical Committee and the Steering Committee. The Steering Committee comprised Permanent Secretaries and an expert from National Petroleum Corporation of Namibia (Proprietary) Limited, a State owned company. The officials who served on these Committees were from the following Ministries: Ministry of Lands and Resettlement, Ministry of Mines and Energy, Ministry of Fisheries and Marine Resources, Ministry of Justice, Ministry of Foreign Affairs, Ministry of Defense, Ministry of Works and Transport, Office of the Attorney General, and National Planning Commission. These officials are experts *inter alia* in the fields of geology, geophysics, hydrography, surveys, and international law. The primary object of these Committees was to ensure that the Republic of Namibia complies with the provisions of Article 76 of the United Nations Convention on the Law of the Sea and the Scientific and Technical Guidelines of the Commission of the Limits of the Continental Shelf adopted on 13th May 1999. The Technical and Steering Committees submitted reports to the Government of the Republic of Namibia on regular basis. The final submission was approved by the Namibian Government.

Participation of Commission Members

The Republic of Namibia was assisted in the preparation of the submission by Mr. Galo Carrera Hurtado, member of the Commission. No advice was provided by any other member of the Commission.

Boundaries of Adjacent States

Boundary between Namibia and Angola

The boundary between the Republic of Namibia and the Republic of Angola was delimited by the Declaration between Portugal and Germany Respecting the Delimitation of the Possession of the two Countries and their Respective Spheres of Influence in the South of Africa, signed at Lisbon on 30th December 1886. So far as material Article 1 of this Declaration provides that the boundary "shall follow the course of the River Kunene from its mouth....". A further Agreement which defined certain issues which were not clearly identified in the Declaration of 1886 was concluded by the Governments of Portugal and the Union of South Africa on 22nd June 1926. So far as material Article 2 of this Agreement provides that the boundary is "declared and agreed to be the middle line of the Kunene River, that is to say, the line drawn equidistant from both banks, from the mouth of the said river up to a point at the Rua Cana Falls" The Governments of Namibia and Angola signed an Agreement which delimited the maritime boundary between the two states from the mouth of the Kunene River. A copy of this Agreement is attached hereto and marked Annex 19. (Ian Brownlie,

African Boundaries A Legal and Diplomatic Encyclopaedia, C. Hurst & Company, London, 1979, pp. 1025 – 1040; S. Akweenda, International Law and the Protection of Namibia’s Territorial Integrity: Boundaries and Territorial Claims, Kluwer Law International, The Hague/London/Boston, 1997, pp. 204 – 247.)

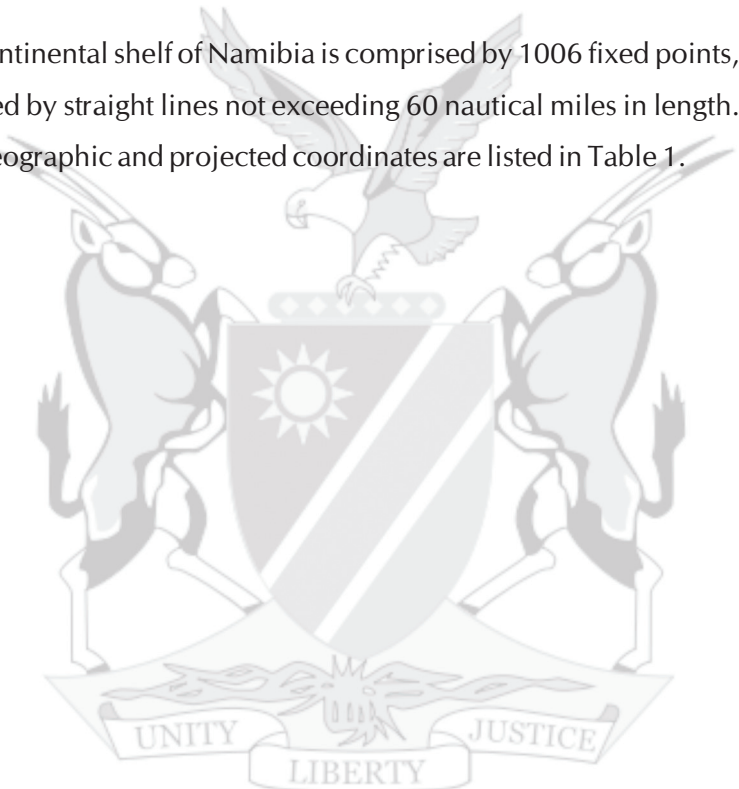
Boundary between Namibia and South Africa

The boundary between the Republic of Namibia and the Republic of South Africa, so far as material, was defined by Article III (1) of the Agreement between Britain and Germany Respecting the Spheres of Influence of the two Countries in Africa, signed at Berlin on 1st July 1890. This Article refers to the boundary “commencing at the mouth of the Orange River, and ascending the north bank of that river ...”. This provision is still a subject of negotiations by the two States. Significantly, for the purpose of the extended limits of the Continental Margin the two Governments are in discussion to enter into an Agreement, with respect to the analysis of their submissions by the Commission on the Limits of the Continental Shelf, without prejudice for the future establishment of their maritime boundaries.

The Outer Limit of the Extended Continental Shelf

The data submitted by Namibia in support of this submission establishes that the outer edge of the Namibian continental margin extends beyond 200 M from the territorial sea baseline in a broad submarine region comprising a total of 1,062,935.85 km². Figure 1 contains a regional view of the entire extended continental shelf submitted by Namibia as well as a depiction of the outer limit and the distinct provisions of Article 76 invoked. Figure 2 shows the total area claimed by Namibia beyond the 200 M line from the baseline.

The outer limit of the extended continental shelf of Namibia is comprised by 1006 fixed points, which form a series of segments connected by straight lines not exceeding 60 nautical miles in length. The fixed points identifiers as well as its geographic and projected coordinates are listed in Table 1.



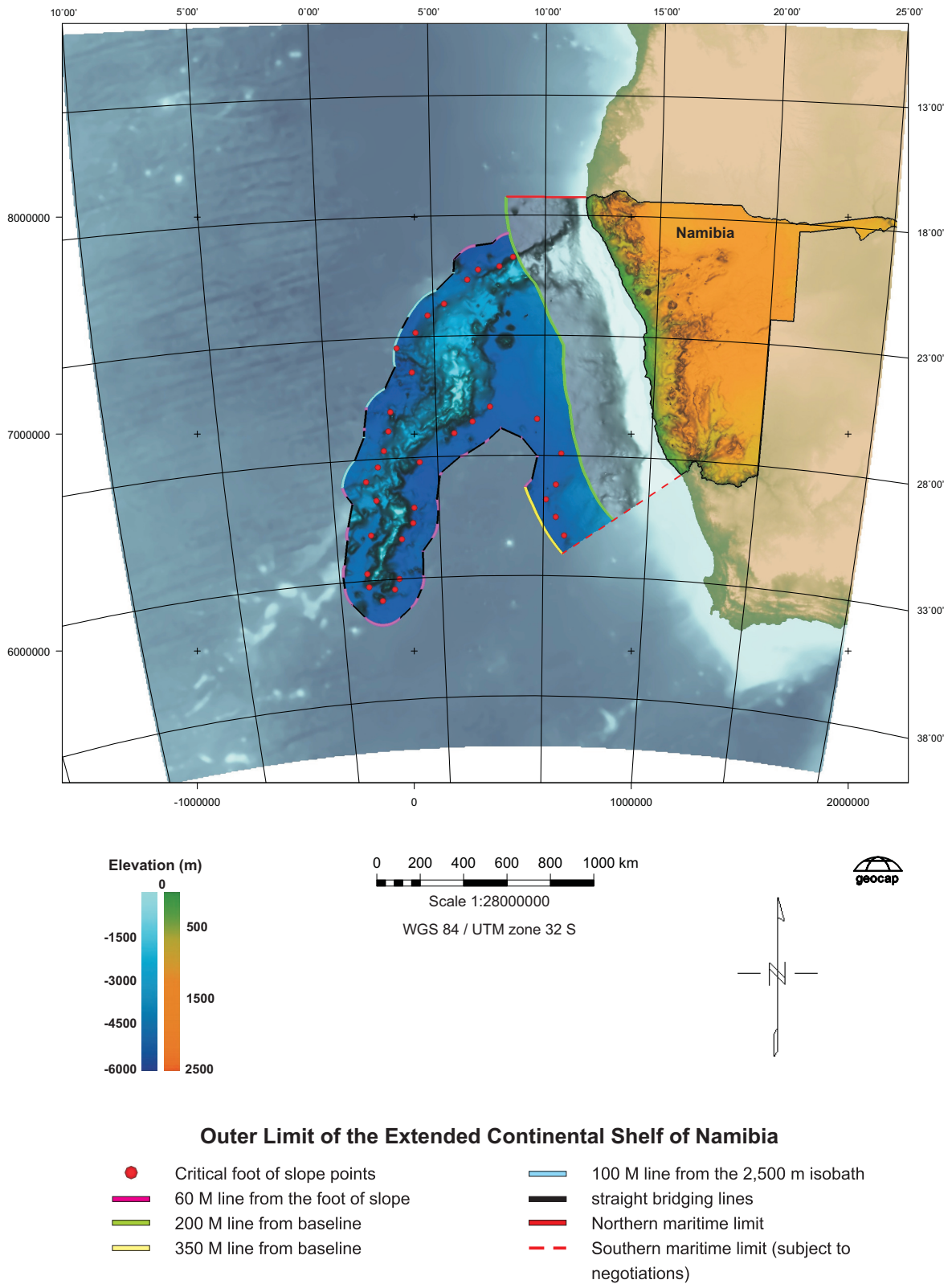


Figure 1: Outer limit of the Extended Continental Shelf of Namibia showing the distinct provisions of Article 76 invoked.

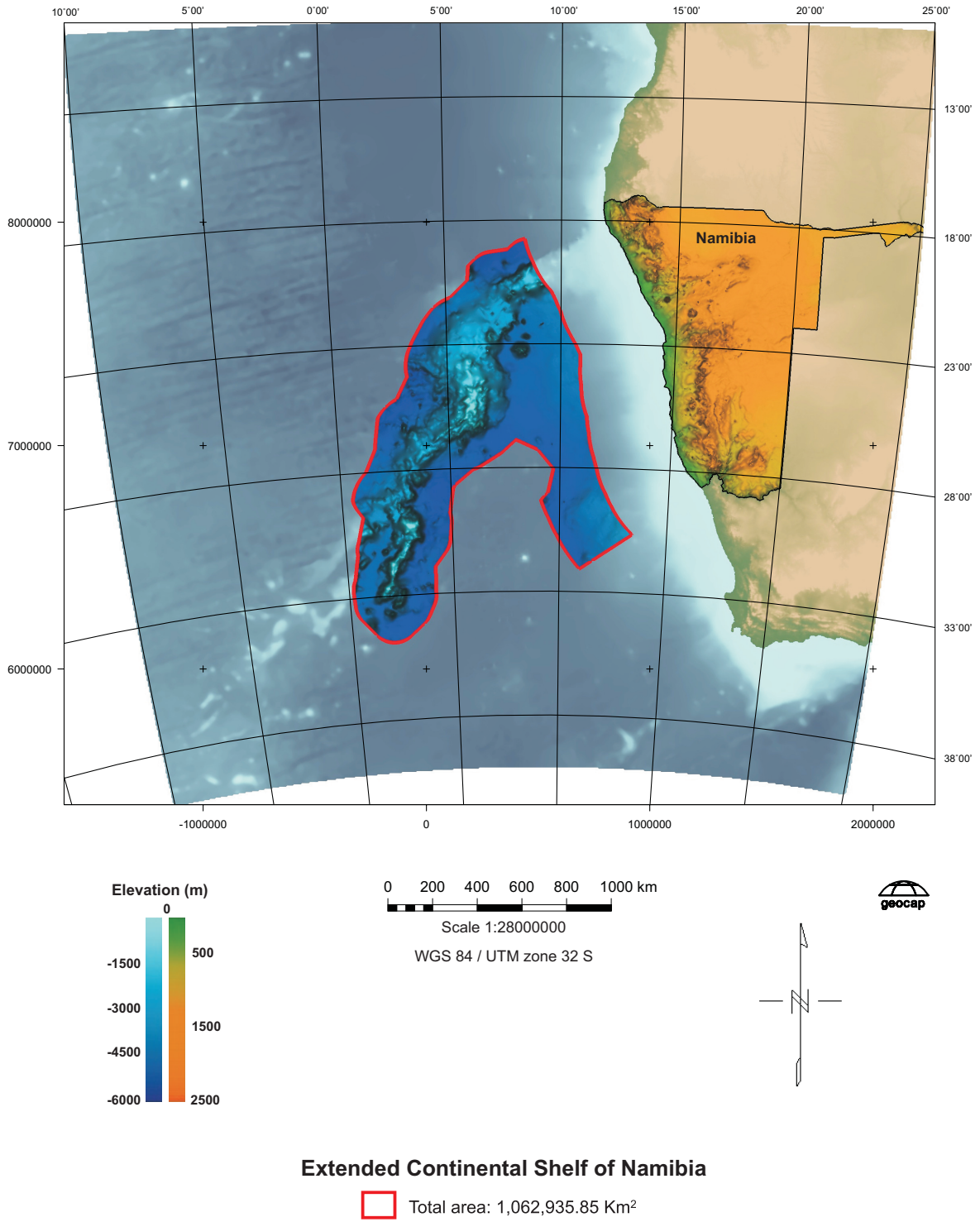
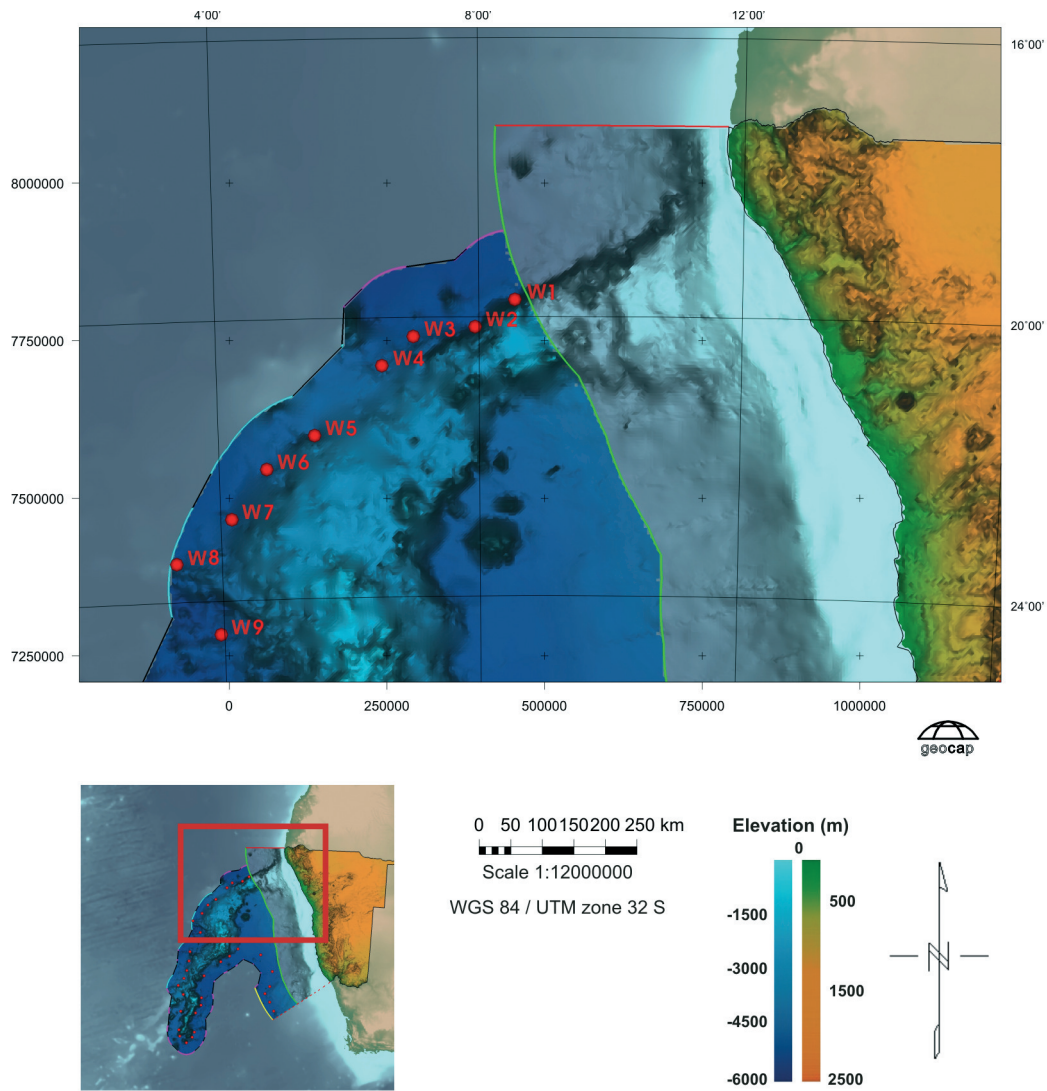


Figure 2: The Extended Continental Shelf of Namibia and the total area claimed.

Region-by-Region Overview

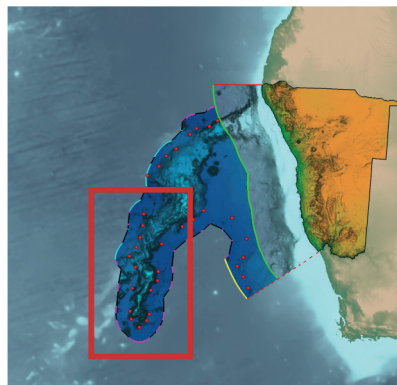
Due to the extensive area and diverse physiographic and geological settings of the Namibian margin, it was divided in three main regions each of which is represented in more detailed maps. The following maps show a depiction of the outer limit and the distinct provisions of Article 76 invoked in each region that comprises the Extended Continental Shelf.



Outer Limit of the Extended Continental Shelf of Namibia (from FCS W1 to W9)

- Critical foot of slope points
- 60 M line from the foot of slope
- 200 M line from baseline
- 100 M line from the 2,500 m isobath
- straight bridging lines
- Northern maritime limit

Figure 3: Detail of the outer limit of the Extended Continental Shelf of Namibia (from FCS W1 to W9).



**Outer Limit of the Extended Continental Shelf of Namibia
(from FCS W10 to W25)**

- Critical foot of slope points
- 60 M line from the foot of slope
- 100 M line from the 2,500m isobath
- Straight bridging lines

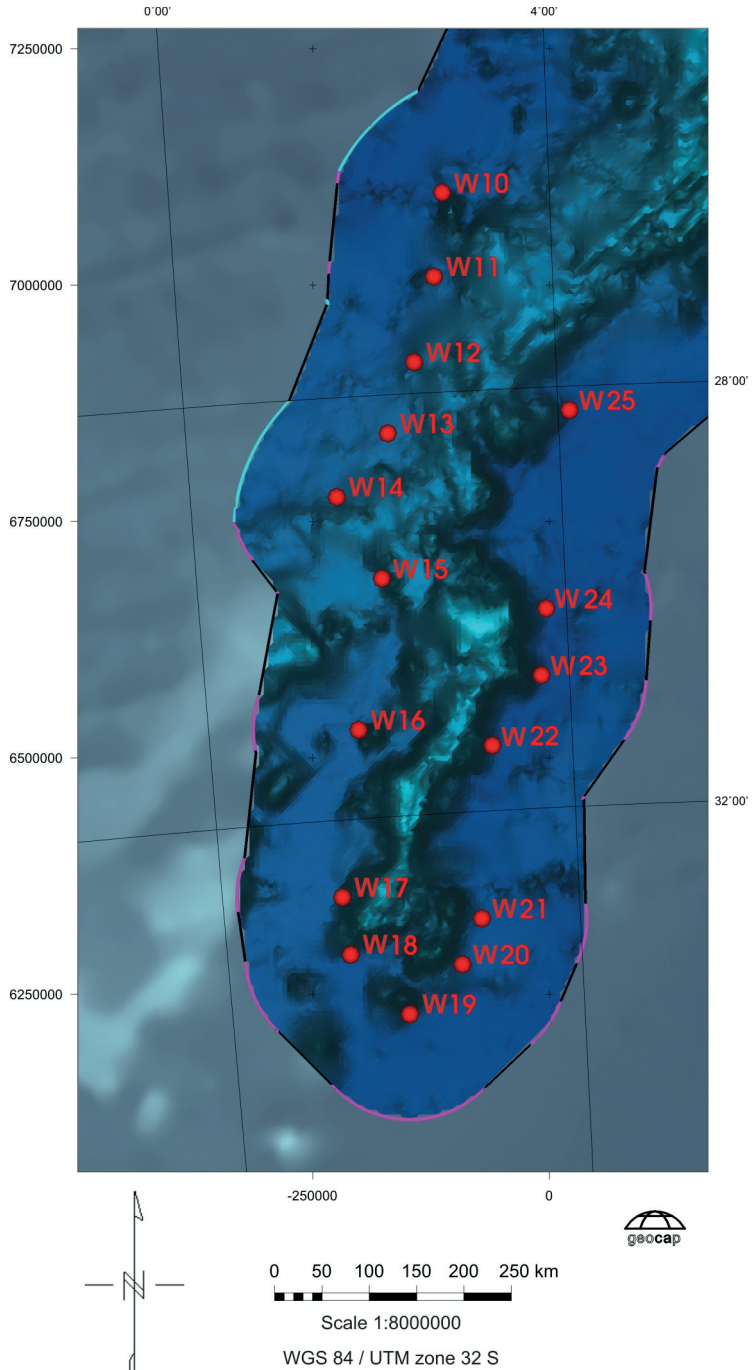
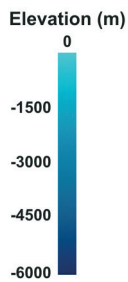


Figure 4: Detail of the outer limit of the Extended Continental Shelf of Namibia (from FCS W10 to W25).

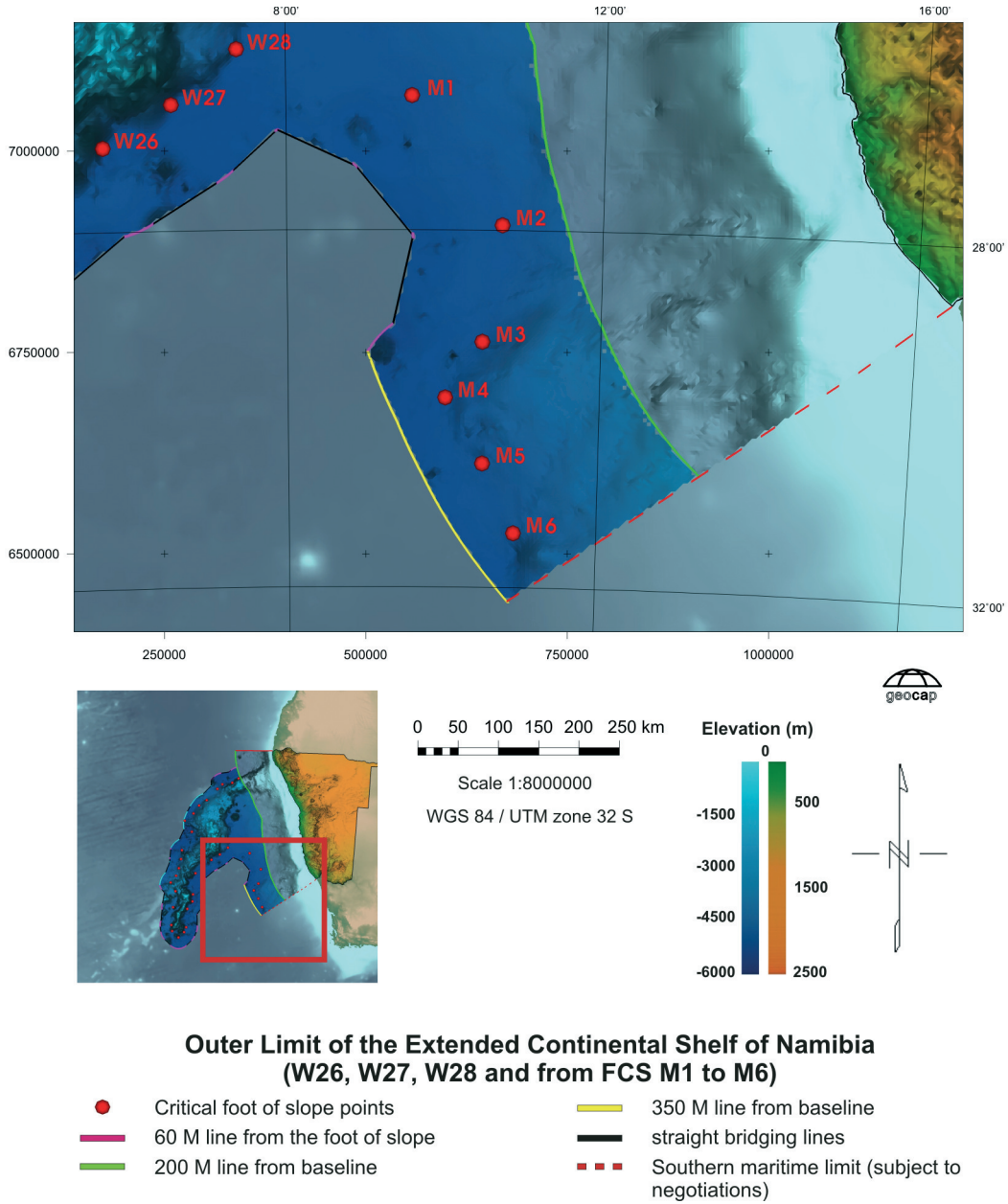


Figure 5: Detail of the outer limit of the Extended Continental Shelf of Namibia (W26, W27, W28 and from FCS M1 to M6).

List of Outer Limit Fixed Points

The following table (Table 1) lists by number identifiers and position the 1006 fixed points that comprise the outer limit of the Extended Continental Shelf of Namibia according to the provisions of Article 76 of UNCLOS. The distance in nautical miles from one fixed point to the previous is given in the far right column of the table. The position of the fixed points is given in latitudes and longitudes (decimal degrees, WGS 84) and UTM projected coordinates (meters, Zone 32 S).

The projected coordinate system parameters are listed below:

Projection: UTM zone 32S

Type: Transverse Mercator

Lat0,Lon0,SF,FE,FN: 0,9,0.9996,500000,10000000

Datum: WGS 84

Ellipsoid: WGS 84

MajAx,Eccen,PrimeMer: 6378137,0.08181919084,0

Local datum transform: [WGS 84] World



Table 1 : List of Outer Limit Fixed Points.

IDENTIFIER	EASTINGS (m)	NORTHINGS (m)	LONGITUDE (decimal degrees)	LATITUDE (decimal degrees)	PROVISION OF ARTICLE 76	DISTANCE TO PREVIOUS POINT (M)
1	436243.25	7926114.5	8.395121	-18.755526	200M from Baseline	-
2	434615.63	7925862	8.379672	-18.757757	60 M from FOS	0.89
3	432791.13	7925547	8.362352	-18.760546	60 M from FOS	1.00
4	430972.09	7925202.5	8.345083	-18.7636	60 M from FOS	1.00
5	429159.13	7924827.5	8.327869	-18.766927	60 M from FOS	1.00
6	427352.63	7924422	8.310716	-18.77053	60 M from FOS	1.00
7	425553.06	7923987	8.293626	-18.774397	60 M from FOS	1.00
8	423761.03	7923521.5	8.276605	-18.778539	60 M from FOS	1.00
9	421976.94	7923026.5	8.259659	-18.782946	60 M from FOS	1.00
10	420201.56	7922502	8.242792	-18.787618	60 M from FOS	1.00
11	418434.91	7921947.5	8.226007	-18.792561	60 M from FOS	1.00
12	416677.88	7921364	8.20931	-18.797764	60 M from FOS	1.00
13	414930.78	7920751.5	8.192706	-18.803228	60 M from FOS	1.00
14	413194.06	7920109.5	8.176198	-18.808958	60 M from FOS	1.00
15	411468.34	7919438.5	8.159792	-18.814949	60 M from FOS	1.00
16	409754.03	7918739.5	8.143491	-18.821191	60 M from FOS	1.00
17	408051.69	7918011.5	8.127302	-18.827695	60 M from FOS	1.00
18	406361.66	7917255.5	8.111227	-18.834451	60 M from FOS	1.00
19	404684.38	7916471.5	8.095271	-18.84146	60 M from FOS	1.00
20	403020.41	7915659	8.079438	-18.848724	60 M from FOS	1.00
21	401370.28	7914819.5	8.063734	-18.856233	60 M from FOS	1.00
22	399734.31	7913952.5	8.048161	-18.863989	60 M from FOS	1.00
23	398113.09	7913058.5	8.032726	-18.871988	60 M from FOS	1.00

IDENTIFIER	EASTINGS (m)	NORTHINGS (m)	LONGITUDE (decimal degrees)	LATITUDE (decimal degrees)	PROVISION OF ARTICLE 76	DISTANCE TO PREVIOUS POINT (M)
24	396506.94	7912137.5	8.017431	-18.880231	60 M from FOS	1.00
25	394916.38	7911190	8.002281	-18.888712	60 M from FOS	1.00
26	393341.78	7910215.5	7.98728	-18.897437	60 M from FOS	1.00
27	391783.63	7909215.5	7.972432	-18.906393	60 M from FOS	1.00
28	390242.28	7908189.5	7.95774	-18.915582	60 M from FOS	1.00
29	388718.38	7907137.5	7.943211	-18.925007	60 M from FOS	1.00
30	387212.09	7906061	7.928847	-18.934652	60 M from FOS	1.00
31	385724.03	7904959	7.914652	-18.944528	60 M from FOS	1.00
32	384254.59	7903832.5	7.900631	-18.954625	60 M from FOS	1.00
33	382804.09	7902681.5	7.886787	-18.964943	60 M from FOS	1.00
34	381373	7901507	7.873124	-18.975473	60 M from FOS	1.00
35	379961.66	7900308.5	7.859646	-18.986221	60 M from FOS	1.00
36	378570.38	7899086.5	7.846354	-18.997181	60 M from FOS	1.00
37	357272.91	7879348.5	7.642604	-19.174143	60 M from FOS	15.68
38	272713.88	7866996.5	6.837297	-19.277989	60 M from FOS	46.14
39	270889.5	7866675	6.819908	-19.280686	60 M from FOS	1.00
40	269070.75	7866323	6.802569	-19.283658	60 M from FOS	1.00
41	267258.13	7865941	6.785284	-19.286899	60 M from FOS	1.00
42	265452	7865529	6.768056	-19.290411	60 M from FOS	1.00
43	263653.06	7865086.5	6.750893	-19.294197	60 M from FOS	1.00
44	261861.64	7864614.5	6.733797	-19.298248	60 M from FOS	1.00
45	260078.39	7864112.5	6.716774	-19.30257	60 M from FOS	1.00
46	258401.98	7863610	6.700766	-19.306907	60 M from FOS	0.94
47	258303.69	7863580.5	6.699827	-19.307162	60 M from FOS	0.06
48	256538.02	7863019.5	6.682963	-19.312015	60 M from FOS	1.00
49	254782.16	7862428.5	6.666187	-19.317139	60 M from FOS	1.00
50	253036.11	7861809	6.649499	-19.32252	60 M from FOS	1.00
51	251300.7	7861160.5	6.632908	-19.328162	60 M from FOS	1.00
52	249576.39	7860482.5	6.616418	-19.33407	60 M from FOS	1.00
53	247863.59	7859776.5	6.600033	-19.340231	60 M from FOS	1.00
54	246162.83	7859042	6.583757	-19.346649	60 M from FOS	1.00

IDENTIFIER	EASTINGS (m)	NORTHINGS (m)	LONGITUDE (decimal degrees)	LATITUDE (decimal degrees)	PROVISION OF ARTICLE 76	DISTANCE TO PREVIOUS POINT (M)
55	244474.45	7858278.5	6.567594	-19.353329	60 M from FOS	1.00
56	242798.97	7857488	6.551549	-19.360253	60 M from FOS	1.00
57	241136.95	7856669	6.535627	-19.367434	60 M from FOS	1.00
58	239488.8	7855822.5	6.519832	-19.374864	60 M from FOS	1.00
59	237854.94	7854948.5	6.504168	-19.382542	60 M from FOS	1.00
60	236235.89	7854047.5	6.488639	-19.390465	60 M from FOS	1.00
61	233043.89	7852165.5	6.458005	-19.407034	60 M from FOS	2.00
62	231471.84	7851184.5	6.442909	-19.415681	60 M from FOS	1.00
63	229916.31	7850178	6.427964	-19.424559	60 M from FOS	1.00
64	228377.81	7849145	6.413176	-19.433676	60 M from FOS	1.00
65	226856.73	7848087	6.398549	-19.443021	60 M from FOS	1.00
66	225353.48	7847003.5	6.384086	-19.452597	60 M from FOS	1.00
67	223868.5	7845895	6.369791	-19.462399	60 M from FOS	1.00
68	222402.11	7844762	6.355669	-19.472424	60 M from FOS	1.00
69	220954.78	7843604.5	6.341722	-19.482672	60 M from FOS	1.00
70	219527	7842423.5	6.327957	-19.493133	60 M from FOS	1.00
71	218119.13	7841218.5	6.314375	-19.503812	60 M from FOS	1.00
72	216731.48	7839990.5	6.300982	-19.514701	60 M from FOS	1.00
73	215364.52	7838739	6.287779	-19.525804	60 M from FOS	1.00
74	214018.61	7837465	6.274772	-19.537111	60 M from FOS	1.00
75	212694.06	7836169	6.261963	-19.548619	60 M from FOS	1.00
76	181090.08	7804467	5.955669	-19.829889	60 M from FOS	24.15
77	177674.77	7741331.5	5.911932	-20.399029	100 M from 2,500 m	34.11
78	99557.77	7662119	5.146594	-21.098316	100 M from 2,500 m	60.00
79	97796.03	7661538.5	5.129535	-21.103164	100 M from 2,500 m	1.00
80	96040.08	7660940.5	5.112526	-21.108168	100 M from 2,500 m	1.00
81	94290.2	7660325	5.09557	-21.113329	100 M from 2,500 m	1.00
82	92546.57	7659691.5	5.078669	-21.118653	100 M from 2,500 m	1.00
83	90809.32	7659041	5.061825	-21.124129	100 M from 2,500 m	1.00
84	89078.63	7658373	5.045038	-21.129762	100 M from 2,500 m	1.00
85	87354.59	7657688	5.02831	-21.135548	100 M from 2,500 m	1.00

IDENTIFIER	EASTINGS (m)	NORTHINGS (m)	LONGITUDE (decimal degrees)	LATITUDE (decimal degrees)	PROVISION OF ARTICLE 76	DISTANCE TO PREVIOUS POINT (M)
86	223868.5	7845895	6.369791	-19.462399	100 M from 2,500 m	1.00
87	222402.11	7844762	6.355669	-19.472424	100 M from 2,500 m	1.00
88	220954.78	7843604.5	6.341722	-19.482672	100 M from 2,500 m	1.00
89	219527	7842423.5	6.327957	-19.493133	100 M from 2,500 m	1.00
90	218119.13	7841218.5	6.314375	-19.503812	100 M from 2,500 m	1.00
91	216731.48	7839990.5	6.300982	-19.514701	100 M from 2,500 m	1.00
92	215364.52	7838739	6.287779	-19.525804	100 M from 2,500 m	1.00
93	214018.61	7837465	6.274772	-19.537111	100 M from 2,500 m	1.00
94	212694.06	7836169	6.261963	-19.548619	100 M from 2,500 m	1.00
95	181090.08	7804467	5.955669	-19.829889	100 M from 2,500 m	1.00
96	177674.77	7741331.5	5.911932	-20.399029	100 M from 2,500 m	1.00
97	99557.77	7662119	5.146594	-21.098316	100 M from 2,500 m	1.00
98	97796.03	7661538.5	5.129535	-21.103164	100 M from 2,500 m	1.00
99	96040.08	7660940.5	5.112526	-21.108168	100 M from 2,500 m	1.00
100	94290.2	7660325	5.09557	-21.113329	100 M from 2,500 m	1.00
101	92546.57	7659691.5	5.078669	-21.118653	100 M from 2,500 m	2.00
102	90809.32	7659041	5.061825	-21.124129	100 M from 2,500 m	1.00
103	89078.63	7658373	5.045038	-21.129762	100 M from 2,500 m	1.00
104	87354.59	7657688	5.02831	-21.135548	100 M from 2,500 m	1.00
105	85637.55	7656985.5	5.011644	-21.141492	100 M from 2,500 m	1.00
106	83927.58	7656266	4.995041	-21.147589	100 M from 2,500 m	1.00
107	82224.82	7655529.5	4.978502	-21.153839	100 M from 2,500 m	1.00
108	223868.5	7845895	6.369791	-19.462399	100 M from 2,500 m	1.00
109	222402.11	7844762	6.355669	-19.472424	100 M from 2,500 m	1.00
110	220954.78	7843604.5	6.341722	-19.482672	100 M from 2,500 m	1.00
111	219527	7842423.5	6.327957	-19.493133	100 M from 2,500 m	1.00
112	218119.13	7841218.5	6.314375	-19.503812	100 M from 2,500 m	1.00
113	216731.48	7839990.5	6.300982	-19.514701	100 M from 2,500 m	1.00
114	215364.52	7838739	6.287779	-19.525804	100 M from 2,500 m	1.00
115	214018.61	7837465	6.274772	-19.537111	100 M from 2,500 m	1.00
116	212694.06	7836169	6.261963	-19.548619	100 M from 2,500 m	1.00

IDENTIFIER	EASTINGS (m)	NORTHINGS (m)	LONGITUDE (decimal degrees)	LATITUDE (decimal degrees)	PROVISION OF ARTICLE 76	DISTANCE TO PREVIOUS POINT (M)
117	35334.31	7625906	4.520036	-21.409358	100 M from 2,500 m	1.00
118	33937.01	7624684	4.506259	-21.420004	100 M from 2,500 m	1.00
119	32552.05	7623448	4.492594	-21.430778	100 M from 2,500 m	1.00
120	31179.49	7622198.5	4.479043	-21.441676	100 M from 2,500 m	1.00
121	29819.45	7620935	4.465606	-21.452701	100 M from 2,500 m	1.00
122	28472.09	7619658	4.452286	-21.46385	100 M from 2,500 m	1.00
123	27137.56	7618367.5	4.439083	-21.475123	100 M from 2,500 m	1.00
124	25816.06	7617063.5	4.426	-21.486519	100 M from 2,500 m	1.00
125	24507.72	7615746.5	4.413038	-21.498034	100 M from 2,500 m	1.00
126	23212.52	7614416.5	4.400196	-21.509668	100 M from 2,500 m	1.00
127	21930.69	7613073.5	4.387478	-21.521422	100 M from 2,500 m	1.00
128	20662.34	7611718	4.374884	-21.53329	100 M from 2,500 m	1.00
129	19407.59	7610349.5	4.362414	-21.545278	100 M from 2,500 m	1.00
130	16919.57	7607593	4.337671	-21.569431	100 M from 2,500 m	2.00
131	15684.77	7606206.5	4.325382	-21.581583	100 M from 2,500 m	1.00
132	14463.93	7604808	4.313222	-21.593845	100 M from 2,500 m	1.00
133	13257.14	7603397	4.301192	-21.606222	100 M from 2,500 m	1.00
134	12064.53	7601974	4.289293	-21.618709	100 M from 2,500 m	1.00
135	10886.23	7600539	4.277526	-21.631308	100 M from 2,500 m	1.00
136	9722.34	7599092.5	4.265892	-21.644013	100 M from 2,500 m	1.00
137	8572.98	7597634	4.254393	-21.656828	100 M from 2,500 m	1.00
138	7438.24	7596164.5	4.243029	-21.669746	100 M from 2,500 m	1.00
139	6318.24	7594683.5	4.231801	-21.68277	100 M from 2,500 m	1.00
140	5213.13	7593191	4.220711	-21.6959	100 M from 2,500 m	1.00
141	-12333.75	7569246.5	4.044268	-21.906453	100 M from 2,500 m	15.99
142	-13423.14	7567742	4.03329	-21.919677	100 M from 2,500 m	1.00
143	-14497.33	7566227	4.022453	-21.932999	100 M from 2,500 m	1.00
144	-15556.3	7564701	4.011758	-21.946423	100 M from 2,500 m	1.00
145	-16600	7563164.5	4.001204	-21.959945	100 M from 2,500 m	1.00
146	-17628.26	7561617.5	3.990794	-21.973565	100 M from 2,500 m	1.00
147	-18640.92	7560060.5	3.980529	-21.987278	100 M from 2,500 m	1.00

IDENTIFIER	EASTINGS (m)	NORTHINGS (m)	LONGITUDE (decimal degrees)	LATITUDE (decimal degrees)	PROVISION OF ARTICLE 76	DISTANCE TO PREVIOUS POINT (M)
148	-19637.95	7558493.5	3.97041	-22.001085	100 M from 2,500 m	1.00
149	-20619.3	7556916	3.960436	-22.01499	100 M from 2,500 m	1.00
150	-21584.77	7555329.5	3.950611	-22.02898	100 M from 2,500 m	1.00
151	-22534.33	7553733	3.940934	-22.043064	100 M from 2,500 m	1.00
152	-23467.84	7552127	3.931406	-22.057237	100 M from 2,500 m	1.00
153	-24385.28	7550511.5	3.922029	-22.071499	100 M from 2,500 m	1.00
154	-25286.43	7548887.5	3.912804	-22.085842	100 M from 2,500 m	1.00
155	-26171.32	7547254	3.903731	-22.100275	100 M from 2,500 m	1.00
156	-64466.95	7475488.5	3.508681	-22.733658	100 M from 2,500 m	43.78
157	-65327.56	7473841	3.499744	-22.748184	100 M from 2,500 m	1.00
158	-66171.62	7472185	3.490962	-22.762792	100 M from 2,500 m	1.00
159	-66999	7470521	3.482337	-22.777476	100 M from 2,500 m	1.00
160	-67809.73	7468848.5	3.473868	-22.792242	100 M from 2,500 m	1.00
161	-68603.67	7467168	3.465557	-22.807084	100 M from 2,500 m	1.00
162	-69380.68	7465479.5	3.457405	-22.822003	100 M from 2,500 m	1.00
163	-70140.77	7463783	3.449412	-22.836999	100 M from 2,500 m	1.00
164	-70883.86	7462079.5	3.44158	-22.852063	100 M from 2,500 m	1.00
165	-71609.81	7460368.5	3.433909	-22.867199	100 M from 2,500 m	1.00
166	-72318.59	7458650	3.426399	-22.882408	100 M from 2,500 m	1.00
167	-73010.15	7456924.5	3.419053	-22.897685	100 M from 2,500 m	1.00
168	-84030.05	7429327	3.301679	-23.141947	100 M from 2,500 m	15.99
169	-84716.22	7427599.5	3.29435	-23.157232	100 M from 2,500 m	1.00
170	-85385	7425864.5	3.287186	-23.172591	100 M from 2,500 m	1.00
171	-86036.42	7424123.5	3.280185	-23.188008	100 M from 2,500 m	1.00
172	-86670.39	7422375.5	3.27335	-23.203494	100 M from 2,500 m	1.00
173	-87286.8	7420621.5	3.266682	-23.21904	100 M from 2,500 m	1.00
174	-87885.62	7418861	3.26018	-23.234649	100 M from 2,500 m	1.00
175	-88466.77	7417095	3.253846	-23.250314	100 M from 2,500 m	1.00
176	-89030.15	7415323.5	3.247681	-23.266034	100 M from 2,500 m	1.00
177	-89575.77	7413546	3.241684	-23.281814	100 M from 2,500 m	1.00
178	-90103.55	7411763	3.235857	-23.297649	100 M from 2,500 m	1.00

IDENTIFIER	EASTINGS (m)	NORTHINGS (m)	LONGITUDE (decimal degrees)	LATITUDE (decimal degrees)	PROVISION OF ARTICLE 76	DISTANCE TO PREVIOUS POINT (M)
179	-90613.41	7409975.5	3.230201	-23.313531	100 M from 2,500 m	1.00
180	-91105.35	7408182	3.224715	-23.329472	100 M from 2,500 m	1.00
181	-91579.29	7406384.5	3.219402	-23.345455	100 M from 2,500 m	1.00
182	-92035.17	7404582	3.21426	-23.361489	100 M from 2,500 m	1.00
183	-92472.98	7402775	3.209291	-23.37757	100 M from 2,500 m	1.00
184	-92892.69	7400963.5	3.204494	-23.393698	100 M from 2,500 m	1.00
185	-93294.17	7399148	3.199872	-23.409867	100 M from 2,500 m	1.00
186	-93677.47	7397328.5	3.195424	-23.426079	100 M from 2,500 m	1.00
187	-94042.48	7395505.5	3.191151	-23.442329	100 M from 2,500 m	1.00
188	-94389.24	7393678.5	3.187053	-23.45862	100 M from 2,500 m	1.00
189	-94717.67	7391848.5	3.183131	-23.474945	100 M from 2,500 m	1.00
190	-95027.74	7390015.5	3.179385	-23.491304	100 M from 2,500 m	1.00
191	-95319.38	7388179	3.175816	-23.5077	100 M from 2,500 m	1.00
192	-95592.63	7386339.5	3.172423	-23.52413	100 M from 2,500 m	1.00
193	-95847.45	7384498	3.169208	-23.540584	100 M from 2,500 m	1.00
194	-96083.78	7382653.5	3.166171	-23.557072	100 M from 2,500 m	1.00
195	-96301.61	7380807	3.163312	-23.573584	100 M from 2,500 m	1.00
196	-96500.91	7378958.5	3.160632	-23.590121	100 M from 2,500 m	1.00
197	-96681.66	7377108	3.15813	-23.606682	100 M from 2,500 m	1.00
198	-96843.79	7375255.5	3.155809	-23.623268	100 M from 2,500 m	1.00
199	-96987.49	7373402	3.153665	-23.63987	100 M from 2,500 m	1.00
200	-97112.52	7371546.5	3.151702	-23.656496	100 M from 2,500 m	1.00
201	-97218.94	7369690	3.149919	-23.673139	100 M from 2,500 m	1.00
202	-97306.78	7367832.5	3.148316	-23.689796	100 M from 2,500 m	1.00
203	-97375.97	7365974.5	3.146894	-23.706466	100 M from 2,500 m	1.00
204	-97426.55	7364115.5	3.145653	-23.723151	100 M from 2,500 m	1.00
205	-97438.27	7363548.5	3.14531	-23.728241	100 M from 2,500 m	0.30
206	-97493.31	7362257.5	3.144253	-23.73982	100 M from 2,500 m	0.69
207	-97556.76	7360399	3.142884	-23.756496	100 M from 2,500 m	1.00
208	-97601.55	7358540.5	3.141696	-23.773178	100 M from 2,500 m	1.00
209	-97627.7	7356681	3.14069	-23.789876	100 M from 2,500 m	1.00

IDENTIFIER	EASTINGS (m)	NORTHINGS (m)	LONGITUDE (decimal degrees)	LATITUDE (decimal degrees)	PROVISION OF ARTICLE 76	DISTANCE TO PREVIOUS POINT (M)
210	-97635.19	7354821.5	3.139865	-23.806581	100 M from 2,500 m	1.00
211	-97624.14	7352962	3.13922	-23.823293	100 M from 2,500 m	1.00
212	-97594.39	7351103	3.138757	-23.840007	100 M from 2,500 m	1.00
213	-97545.99	7349244	3.138476	-23.856729	100 M from 2,500 m	1.00
214	-97478.99	7347386	3.138377	-23.873448	100 M from 2,500 m	1.00
215	-97393.34	7345528.5	3.138459	-23.890169	100 M from 2,500 m	1.00
216	-97289.09	7343672	3.138724	-23.906889	100 M from 2,500 m	1.00
217	-97166.2	7341816.5	3.13917	-23.923606	100 M from 2,500 m	1.00
218	-97024.77	7339962.5	3.139798	-23.940317	100 M from 2,500 m	1.00
219	-96864.75	7338110	3.140608	-23.957022	100 M from 2,500 m	1.00
220	-96686.13	7336259	3.1416	-23.97372	100 M from 2,500 m	1.00
221	-96489	7334410	3.142773	-23.990407	100 M from 2,500 m	1.00
222	-96273.33	7332563	3.144129	-24.007083	100 M from 2,500 m	1.00
223	-96039.18	7330718.5	3.145666	-24.023743	100 M from 2,500 m	1.00
224	-95786.54	7328876.5	3.147386	-24.040388	100 M from 2,500 m	1.00
225	-95515.45	7327036.5	3.149286	-24.057022	100 M from 2,500 m	1.00
226	-95225.93	7325200	3.151368	-24.073632	100 M from 2,500 m	1.00
227	-94918.02	7323366.5	3.153632	-24.090222	100 M from 2,500 m	1.00
228	-94591.76	7321536	3.156076	-24.106791	100 M from 2,500 m	1.00
229	-94247.13	7319708.5	3.158702	-24.123341	100 M from 2,500 m	1.00
230	-93884.26	7317885	3.161508	-24.139861	100 M from 2,500 m	1.00
231	-93503.1	7316065.5	3.164495	-24.156353	100 M from 2,500 m	1.00
232	-93103.73	7314249.5	3.167662	-24.17282	100 M from 2,500 m	1.00
233	-92686.2	7312437.5	3.171009	-24.189258	100 M from 2,500 m	1.00
234	-92250.48	7310630	3.174537	-24.205662	100 M from 2,500 m	1.00
235	-91658.64	7308300.5	3.17938	-24.226816	100 M from 2,500 m	1.29
236	-138764.73	7207135	2.67224	-25.116542	100 M from 2,500 m	60.00
237	-140416.48	7206278.5	2.655558	-25.12353	100 M from 2,500 m	1.00
238	-142059.55	7205405.5	2.638952	-25.130669	100 M from 2,500 m	1.00
239	-143693.86	7204515.5	2.622423	-25.137961	100 M from 2,500 m	1.00
240	-145319.19	7203610	2.605974	-25.145394	100 M from 2,500 m	1.00

IDENTIFIER	EASTINGS (m)	NORTHINGS (m)	LONGITUDE (decimal degrees)	LATITUDE (decimal degrees)	PROVISION OF ARTICLE 76	DISTANCE TO PREVIOUS POINT (M)
241	-146935.38	7202687.5	2.589605	-25.152981	100 M from 2,500 m	1.00
242	-148542.41	7201749	2.573317	-25.160713	100 M from 2,500 m	1.00
243	-150139.95	7200795	2.557114	-25.168587	100 M from 2,500 m	1.00
244	-151727.91	7199824.5	2.540995	-25.17661	100 M from 2,500 m	1.00
245	-153306.06	7198838	2.524964	-25.184779	100 M from 2,500 m	1.00
246	-154874.3	7197836	2.509021	-25.193089	100 M from 2,500 m	1.00
247	-156432.53	7196818	2.493167	-25.201545	100 M from 2,500 m	1.00
248	-157980.5	7195785	2.477406	-25.210138	100 M from 2,500 m	1.00
249	-159518.06	7194736	2.461737	-25.218877	100 M from 2,500 m	1.00
250	-161045.11	7193672	2.446163	-25.227753	100 M from 2,500 m	1.00
251	-162561.39	7192592.5	2.430685	-25.23677	100 M from 2,500 m	1.00
252	-164066.89	7191498	2.415305	-25.245925	100 M from 2,500 m	1.00
253	-165561.42	7190388.5	2.400023	-25.255217	100 M from 2,500 m	1.00
254	-167044.73	7189264	2.384842	-25.264647	100 M from 2,500 m	1.00
255	-168516.7	7188124.5	2.369764	-25.274214	100 M from 2,500 m	1.00
256	-169977.25	7186970	2.354789	-25.283919	100 M from 2,500 m	1.00
257	-171426.22	7185801.5	2.339919	-25.293752	100 M from 2,500 m	1.00
258	-172863.41	7184618.5	2.325156	-25.303719	100 M from 2,500 m	1.00
259	-174288.77	7183421	2.3105	-25.313819	100 M from 2,500 m	1.00
260	-175702.06	7182209	2.295953	-25.324053	100 M from 2,500 m	1.00
261	-177103.2	7180983	2.281518	-25.334415	100 M from 2,500 m	1.00
262	-178492.05	7179743	2.267194	-25.344907	100 M from 2,500 m	1.00
263	-179868.44	7178489.5	2.252984	-25.355524	100 M from 2,500 m	1.00
264	-181232.19	7177221.5	2.238889	-25.366275	100 M from 2,500 m	1.00
265	-182583.23	7175940.5	2.224911	-25.377146	100 M from 2,500 m	1.00
266	-183921.39	7174645.5	2.21105	-25.388147	100 M from 2,500 m	1.00
267	-184202.05	7174370.5	2.208141	-25.390484	100 M from 2,500 m	0.21
268	-185265.11	7173356.5	2.197135	-25.399089	100 M from 2,500 m	0.79
269	-186600.88	7172059.5	2.183292	-25.410105	100 M from 2,500 m	1.00
270	-187923.5	7170748.5	2.16957	-25.421251	100 M from 2,500 m	1.00
271	-189233.02	7169425	2.155967	-25.432513	100 M from 2,500 m	1.00

IDENTIFIER	EASTINGS (m)	NORTHINGS (m)	LONGITUDE (decimal degrees)	LATITUDE (decimal degrees)	PROVISION OF ARTICLE 76	DISTANCE TO PREVIOUS POINT (M)
272	-190529.22	7168088	2.142487	-25.443901	100 M from 2,500 m	1.00
273	-191812.06	7166738	2.12913	-25.455409	100 M from 2,500 m	1.00
274	-193081.31	7165375	2.115898	-25.467039	100 M from 2,500 m	1.00
275	-194336.83	7163999.5	2.102792	-25.478785	100 M from 2,500 m	1.00
276	-195578.58	7162611.5	2.089813	-25.490648	100 M from 2,500 m	1.00
277	-196806.28	7161211.5	2.076964	-25.502623	100 M from 2,500 m	1.00
278	-198019.95	7159799	2.064245	-25.514716	100 M from 2,500 m	1.00
279	-199219.45	7158374	2.051657	-25.526926	100 M from 2,500 m	1.00
280	-200404.66	7156937.5	2.039201	-25.539243	100 M from 2,500 m	1.00
281	-201575.44	7155489	2.026879	-25.551674	100 M from 2,500 m	1.00
282	-202731.61	7154028.5	2.014693	-25.564217	100 M from 2,500 m	1.00
283	-203873.19	7152557	2.002642	-25.576865	100 M from 2,500 m	1.00
284	-204999.95	7151073.5	1.990728	-25.589625	100 M from 2,500 m	1.00
285	-206111.8	7149579	1.978954	-25.60249	100 M from 2,500 m	1.00
286	-207208.61	7148073.5	1.96732	-25.615458	100 M from 2,500 m	1.00
287	-208290.33	7146557	1.955827	-25.628532	100 M from 2,500 m	1.00
288	-209356.81	7145030	1.944476	-25.641705	100 M from 2,500 m	1.00
289	-210407.91	7143492	1.933268	-25.654983	100 M from 2,500 m	1.00
290	-211443.58	7141943.5	1.922205	-25.66836	100 M from 2,500 m	1.00
291	-212463.69	7140384.5	1.911288	-25.681839	100 M from 2,500 m	1.00
292	-213468.13	7138816	1.900517	-25.695408	100 M from 2,500 m	1.00
293	-214456.83	7137237	1.889894	-25.709078	100 M from 2,500 m	1.00
294	-215429.69	7135648	1.87942	-25.722844	100 M from 2,500 m	1.00
295	-216386.59	7134049.5	1.869096	-25.736701	100 M from 2,500 m	1.00
296	-217327.44	7132441.5	1.858923	-25.75065	100 M from 2,500 m	1.00
297	-218252.05	7130824	1.848903	-25.764691	100 M from 2,500 m	1.00
298	-219160.45	7129197.5	1.839036	-25.778819	100 M from 2,500 m	1.00
299	-220052.53	7127561.5	1.829322	-25.79304	100 M from 2,500 m	1.00
300	-220928.14	7125917.5	1.819765	-25.807339	100 M from 2,500 m	1.00
301	-222388.91	7122721	1.803567	-25.835256	60 M from FOS	1.89
302	-222754.73	7120894	1.798949	-25.851443	60 M from FOS	1.00

IDENTIFIER	EASTINGS (m)	NORTHINGS (m)	LONGITUDE (decimal degrees)	LATITUDE (decimal degrees)	PROVISION OF ARTICLE 76	DISTANCE TO PREVIOUS POINT (M)
303	-223089.97	7119061	1.79463	-25.867698	60 M from FOS	1.00
304	-223394.59	7117223	1.790608	-25.884013	60 M from FOS	1.00
305	-223668.47	7115379.5	1.786887	-25.900392	60 M from FOS	1.00
306	-223911.56	7113532.5	1.783467	-25.916818	60 M from FOS	1.00
307	-224123.75	7111681	1.78035	-25.933298	60 M from FOS	1.00
308	-233025.61	7021394.5	1.640939	-26.737393	60 M from FOS	48.69
309	-233187.88	7019538	1.638244	-26.753932	60 M from FOS	1.00
310	-233319.11	7017679	1.635856	-26.770509	60 M from FOS	1.00
311	-233419.28	7015818	1.633775	-26.787121	60 M from FOS	1.00
312	-234854.14	6983430	1.600453	-27.076353	100 M from 2,500 m	17.40
313	-234704.39	6982919	1.601649	-27.081007	100 M from 2,500 m	0.29
314	-275642.97	6878826	1.125956	-27.989673	100 M from 2,500 m	60.00
315	-277823.22	6876534	1.102491	-28.008899	100 M from 2,500 m	1.70
316	-279725.97	6874469	1.081963	-28.026253	100 M from 2,500 m	1.51
317	-279965.78	6874206.5	1.079374	-28.028459	100 M from 2,500 m	0.19
318	-281209.47	6872816	1.065925	-28.040164	100 M from 2,500 m	1.00
319	-281209.47	6872816	1.065925	-28.040164	100 M from 2,500 m	0.00
320	-282439.16	6871413.5	1.052607	-28.051981	100 M from 2,500 m	1.00
321	-283654.72	6869998.5	1.039419	-28.063917	100 M from 2,500 m	1.00
322	-284856.06	6868572	1.026364	-28.075962	100 M from 2,500 m	1.00
323	-286043.06	6867133	1.013443	-28.088126	100 M from 2,500 m	1.00
324	-287215.59	6865682	1.000656	-28.100403	100 M from 2,500 m	1.00
325	-288373.63	6864219.5	0.988005	-28.112791	100 M from 2,500 m	1.00
326	-289516.88	6862745.5	0.975492	-28.125287	100 M from 2,500 m	1.00
327	-289987.38	6862130	0.970336	-28.130509	100 M from 2,500 m	0.42
328	-290677.31	6861285	0.962812	-28.137652	100 M from 2,500 m	0.58
329	-291845.63	6859830.5	0.950054	-28.149956	100 M from 2,500 m	1.00
330	-292999.41	6858364	0.937431	-28.162374	100 M from 2,500 m	1.00
331	-294138.44	6856886.5	0.924946	-28.174898	100 M from 2,500 m	1.00
332	-295262.56	6855397.5	0.912601	-28.187531	100 M from 2,500 m	1.00
333	-296371.78	6853897.5	0.900395	-28.20027	100 M from 2,500 m	1.00

IDENTIFIER	EASTINGS (m)	NORTHINGS (m)	LONGITUDE (decimal degrees)	LATITUDE (decimal degrees)	PROVISION OF ARTICLE 76	DISTANCE TO PREVIOUS POINT (M)
334	-297465.91	6852386	0.888331	-28.213119	100 M from 2,500 m	1.00
335	-298544.88	6850863.5	0.87641	-28.226074	100 M from 2,500 m	1.00
336	-299608.5	6849330.5	0.864633	-28.239131	100 M from 2,500 m	1.00
337	-300656.72	6847787	0.853001	-28.252289	100 M from 2,500 m	1.00
338	-301689.41	6846233	0.841516	-28.265549	100 M from 2,500 m	1.00
339	-302706.53	6844668.5	0.830177	-28.27891	100 M from 2,500 m	1.00
340	-303707.97	6843094	0.818987	-28.292369	100 M from 2,500 m	1.00
341	-304693.5	6841509	0.807947	-28.305929	100 M from 2,500 m	1.00
342	-305663.13	6839915	0.797059	-28.319578	100 M from 2,500 m	1.00
343	-306616.72	6838310.5	0.786322	-28.33333	100 M from 2,500 m	1.00
344	-307554.19	6836697.5	0.775739	-28.347166	100 M from 2,500 m	1.00
345	-308475.5	6835074.5	0.765309	-28.361099	100 M from 2,500 m	1.00
346	-309380.47	6833442	0.755034	-28.375127	100 M from 2,500 m	1.00
347	-310269	6831801	0.744917	-28.389239	100 M from 2,500 m	1.00
348	-311141.16	6830151	0.734956	-28.40344	100 M from 2,500 m	1.00
349	-311996.63	6828492	0.725154	-28.41773	100 M from 2,500 m	1.00
350	-312835.5	6826825	0.715511	-28.432101	100 M from 2,500 m	1.00
351	-313657.59	6825149.5	0.706028	-28.446557	100 M from 2,500 m	1.00
352	-314462.88	6823465.5	0.696707	-28.461099	100 M from 2,500 m	1.00
353	-315251.19	6821774	0.687549	-28.475716	100 M from 2,500 m	1.00
354	-315764.28	6820648.5	0.681569	-28.485449	100 M from 2,500 m	0.66
355	-316036.28	6820080.5	0.678419	-28.490353	100 M from 2,500 m	0.34
356	-316831.19	6818391.5	0.66919	-28.504942	100 M from 2,500 m	1.00
357	-317609.09	6816694.5	0.660125	-28.519611	100 M from 2,500 m	1.00
358	-318369.91	6814990.5	0.651224	-28.534353	100 M from 2,500 m	1.00
359	-319113.59	6813278.5	0.642488	-28.549176	100 M from 2,500 m	1.00
360	-319840.09	6811559	0.633918	-28.564076	100 M from 2,500 m	1.00
361	-320549.34	6809832	0.625514	-28.579052	100 M from 2,500 m	1.00
362	-321241.22	6808098.5	0.617278	-28.594096	100 M from 2,500 m	1.00
363	-321915.75	6806358	0.60921	-28.609213	100 M from 2,500 m	1.00
364	-322572.75	6804610.5	0.601312	-28.624403	100 M from 2,500 m	1.00

IDENTIFIER	EASTINGS (m)	NORTHINGS (m)	LONGITUDE (decimal degrees)	LATITUDE (decimal degrees)	PROVISION OF ARTICLE 76	DISTANCE TO PREVIOUS POINT (M)
365	-323212.22	6802857	0.593584	-28.639656	100 M from 2,500 m	1.00
366	-323834.06	6801096.5	0.586026	-28.654982	100 M from 2,500 m	1.00
367	-324438.19	6799330	0.578641	-28.670372	100 M from 2,500 m	1.00
368	-325024.56	6797558	0.571429	-28.685821	100 M from 2,500 m	1.00
369	-325593.13	6795780	0.56439	-28.701334	100 M from 2,500 m	1.00
370	-326143.84	6793996	0.557525	-28.716912	100 M from 2,500 m	1.00
371	-326676.63	6792206.5	0.550835	-28.732549	100 M from 2,500 m	1.00
372	-327191.47	6790412	0.544321	-28.748242	100 M from 2,500 m	1.00
373	-327688.25	6788612.5	0.537984	-28.76399	100 M from 2,500 m	1.00
374	-328166.97	6786808	0.531823	-28.779793	100 M from 2,500 m	1.00
375	-328627.56	6784999	0.525841	-28.795648	100 M from 2,500 m	1.00
376	-329069.97	6783185	0.520036	-28.811558	100 M from 2,500 m	1.00
377	-329494.19	6781367	0.514411	-28.827515	100 M from 2,500 m	1.00
378	-329900.13	6779544.5	0.508966	-28.843524	100 M from 2,500 m	1.00
379	-330287.78	6777718	0.5037	-28.859579	100 M from 2,500 m	1.00
380	-330657.06	6775888	0.498617	-28.875677	100 M from 2,500 m	1.00
381	-331008.03	6774054.5	0.493714	-28.891818	100 M from 2,500 m	1.00
382	-331340.5	6772217	0.488994	-28.908005	100 M from 2,500 m	1.00
383	-331654.56	6770376.5	0.484456	-28.924231	100 M from 2,500 m	1.00
384	-331950.16	6768533	0.480101	-28.940495	100 M from 2,500 m	1.00
385	-332227.22	6766686.5	0.47593	-28.956798	100 M from 2,500 m	1.00
386	-332485.75	6764837.5	0.471944	-28.973134	100 M from 2,500 m	1.00
387	-332725.69	6762985.5	0.468142	-28.989509	100 M from 2,500 m	1.00
388	-332947.06	6761132	0.464525	-29.005909	100 M from 2,500 m	1.00
389	-333149.78	6759275.5	0.461094	-29.022347	100 M from 2,500 m	1.00
390	-333333.91	6757417.5	0.457849	-29.038811	100 M from 2,500 m	1.00
391	-333499.34	6755558	0.454791	-29.0553	100 M from 2,500 m	1.00
392	-333646.13	6753696	0.451919	-29.071823	100 M from 2,500 m	1.00
393	-333830.63	6750873	0.447947	-29.096899	60 M from FOS	1.52
394	-333816.44	6750812	0.448046	-29.097452	60 M from FOS	0.03
395	-333365.22	6749000.5	0.451285	-29.113915	60 M from FOS	1.00

IDENTIFIER	EASTINGS (m)	NORTHINGS (m)	LONGITUDE (decimal degrees)	LATITUDE (decimal degrees)	PROVISION OF ARTICLE 76	DISTANCE TO PREVIOUS POINT (M)
396	-332883.69	6747196	0.454838	-29.130334	60 M from FOS	1.00
397	-332372.16	6745400.5	0.458703	-29.146694	60 M from FOS	1.00
398	-331830.72	6743614	0.46288	-29.162992	60 M from FOS	1.00
399	-331259.47	6741836	0.467366	-29.179235	60 M from FOS	1.00
400	-330658.66	6740068.5	0.472162	-29.195403	60 M from FOS	1.00
401	-330028.38	6738311	0.477266	-29.211501	60 M from FOS	1.00
402	-329368.88	6736564	0.482677	-29.227525	60 M from FOS	1.00
403	-328680.28	6734828.5	0.488393	-29.243465	60 M from FOS	1.00
404	-327962.81	6733105	0.494413	-29.259317	60 M from FOS	1.00
405	-327216.69	6731393.5	0.500735	-29.27508	60 M from FOS	1.00
406	-326442.13	6729695	0.507358	-29.290747	60 M from FOS	1.00
407	-325639.34	6728009.5	0.514279	-29.306315	60 M from FOS	1.00
408	-324808.47	6726338	0.521498	-29.321778	60 M from FOS	1.00
409	-323949.81	6724680	0.529013	-29.337137	60 M from FOS	1.00
410	-323063.63	6723037	0.53682	-29.352381	60 M from FOS	1.00
411	-322150.13	6721409	0.544919	-29.367509	60 M from FOS	1.00
412	-321209.63	6719796.5	0.553307	-29.382516	60 M from FOS	1.00
413	-320242.34	6718200	0.561982	-29.397397	60 M from FOS	1.00
414	-319248.59	6716620	0.570941	-29.412148	60 M from FOS	1.00
415	-318228.56	6715056.5	0.580182	-29.426769	60 M from FOS	1.00
416	-317182.66	6713510.5	0.589703	-29.441251	60 M from FOS	1.00
417	-316111.06	6711982.5	0.599502	-29.455588	60 M from FOS	1.00
418	-315014.09	6710472	0.609575	-29.469785	60 M from FOS	1.00
419	-287708.09	6674987	0.862675	-29.804219	60 M from FOS	24.00
420	-307849.19	6565478	0.572694	-30.768902	60 M from FOS	59.68
421	-308422.72	6563702.5	0.565373	-30.784361	60 M from FOS	1.00
422	-308966.53	6561917	0.558349	-30.799929	60 M from FOS	1.00
423	-309480.47	6560123	0.551624	-30.815592	60 M from FOS	1.00
424	-309964.38	6558320.5	0.5452	-30.831351	60 M from FOS	1.00
425	-310418.09	6556510	0.539079	-30.8472	60 M from FOS	1.00
426	-310841.5	6554692.5	0.533264	-30.863133	60 M from FOS	1.00

IDENTIFIER	EASTINGS (m)	NORTHINGS (m)	LONGITUDE (decimal degrees)	LATITUDE (decimal degrees)	PROVISION OF ARTICLE 76	DISTANCE TO PREVIOUS POINT (M)
427	-311234.53	6552868	0.527755	-30.879148	60 M from FOS	1.00
428	-311597.03	6551037.5	0.522555	-30.895237	60 M from FOS	1.00
429	-311928.94	6549201	0.517665	-30.911399	60 M from FOS	1.00
430	-312230.09	6547359	0.513086	-30.927632	60 M from FOS	1.00
431	-312500.5	6545512	0.508819	-30.943929	60 M from FOS	1.00
432	-312739.97	6543661	0.504867	-30.960284	60 M from FOS	1.00
433	-312948.53	6541806.5	0.501231	-30.97669	60 M from FOS	1.00
434	-313126.03	6539948.5	0.497911	-30.993148	60 M from FOS	1.00
435	-313272.5	6538088	0.49491	-31.00965	60 M from FOS	1.00
436	-313387.91	6536225	0.492226	-31.026195	60 M from FOS	1.00
437	-313472.16	6534361	0.489863	-31.042771	60 M from FOS	1.00
438	-313525.25	6532495	0.48782	-31.059385	60 M from FOS	1.00
439	-313547.22	6530629	0.486097	-31.076021	60 M from FOS	1.00
440	-313537.97	6528762	0.484697	-31.092687	60 M from FOS	1.00
441	-313497.56	6526896.5	0.48362	-31.109361	60 M from FOS	1.00
442	-313426	6525031.5	0.482865	-31.126053	60 M from FOS	1.00
443	-313323.31	6523168	0.482433	-31.142752	60 M from FOS	1.00
444	-313189.5	6521306.5	0.482325	-31.159455	60 M from FOS	1.00
445	-313024.63	6519447.5	0.48254	-31.176157	60 M from FOS	1.00
446	-312828.75	6517591.5	0.48308	-31.192854	60 M from FOS	1.00
447	-312601.84	6515738.5	0.483943	-31.209545	60 M from FOS	1.00
448	-312344.06	6513890	0.48513	-31.226218	60 M from FOS	1.00
449	-312055.47	6512046.5	0.48664	-31.242868	60 M from FOS	1.00
450	-311736.09	6510207.5	0.488474	-31.259499	60 M from FOS	1.00
451	-311386.06	6508374	0.490631	-31.276102	60 M from FOS	1.00
452	-311005.47	6506547	0.493111	-31.292668	60 M from FOS	1.00
453	-310760.25	6505461	0.494782	-31.302529	60 M from FOS	0.60
454	-322858.75	6394128	0.275596	-32.287001	60 M from FOS	60.00
455	-323533.94	6392387	0.267009	-32.302031	60 M from FOS	1.00
456	-324180.06	6390636	0.258715	-32.31717	60 M from FOS	1.00
457	-324796.81	6388874.5	0.250717	-32.332423	60 M from FOS	1.00

IDENTIFIER	EASTINGS (m)	NORTHINGS (m)	LONGITUDE (decimal degrees)	LATITUDE (decimal degrees)	PROVISION OF ARTICLE 76	DISTANCE TO PREVIOUS POINT (M)
458	-325384.06	6387102	0.243016	-32.347795	60 M from FOS	1.00
459	-325941.75	6385320.5	0.235615	-32.363268	60 M from FOS	1.00
460	-326469.56	6383529.5	0.228516	-32.378848	60 M from FOS	1.00
461	-326967.34	6381730.5	0.221723	-32.394519	60 M from FOS	1.00
462	-327435.06	6379923	0.215236	-32.410288	60 M from FOS	1.00
463	-327872.5	6378108	0.209057	-32.426146	60 M from FOS	1.00
464	-328279.59	6376286	0.203188	-32.442087	60 M from FOS	1.00
465	-328656.13	6374457.5	0.197633	-32.458109	60 M from FOS	1.00
466	-329002.09	6372622.5	0.19239	-32.47421	60 M from FOS	1.00
467	-329317.41	6370782.5	0.187463	-32.490379	60 M from FOS	1.00
468	-329601.97	6368937.5	0.182853	-32.506614	60 M from FOS	1.00
469	-329855.66	6367087.5	0.17856	-32.522916	60 M from FOS	1.00
470	-330078.41	6365234	0.174588	-32.539273	60 M from FOS	1.00
471	-330270.16	6363377	0.170937	-32.555683	60 M from FOS	1.00
472	-330430.91	6361517	0.167608	-32.572142	60 M from FOS	1.00
473	-330560.5	6359654	0.164602	-32.588652	60 M from FOS	1.00
474	-330659	6357790	0.161921	-32.605193	60 M from FOS	1.00
475	-330762.5	6354057.5	0.157534	-32.638385	60 M from FOS	2.00
476	-330767.47	6352190	0.155831	-32.655027	60 M from FOS	1.00
477	-330741.28	6350323.5	0.154455	-32.671683	60 M from FOS	1.00
478	-330683.94	6348457.5	0.153406	-32.688358	60 M from FOS	1.00
479	-330595.41	6346592.5	0.152686	-32.705047	60 M from FOS	1.00
480	-330475.72	6344729	0.152295	-32.721747	60 M from FOS	1.00
481	-330324.97	6342868	0.152233	-32.738447	60 M from FOS	1.00
482	-330143.13	6341010	0.152501	-32.755144	60 M from FOS	1.00
483	-329930.28	6339155	0.153098	-32.771837	60 M from FOS	1.00
484	-329686.5	6337304	0.154024	-32.788518	60 M from FOS	1.00
485	-320732.84	6275237.5	0.193134	-33.348486	60 M from FOS	33.59
486	-320437.75	6273394.5	0.194601	-33.365137	60 M from FOS	1.00
487	-320111.91	6271557	0.196399	-33.381762	60 M from FOS	1.00
488	-319755.44	6269724.5	0.198527	-33.398366	60 M from FOS	1.00

IDENTIFIER	EASTINGS (m)	NORTHINGS (m)	LONGITUDE (decimal degrees)	LATITUDE (decimal degrees)	PROVISION OF ARTICLE 76	DISTANCE TO PREVIOUS POINT (M)
489	-319368.41	6267898.5	0.200986	-33.414936	60 M from FOS	1.00
490	-318950.91	6266079.5	0.203776	-33.431467	60 M from FOS	1.00
491	-318503.09	6264267.5	0.206894	-33.447958	60 M from FOS	1.00
492	-318025.06	6262462.5	0.210341	-33.46441	60 M from FOS	1.00
493	-317516.94	6260666.5	0.214116	-33.480805	60 M from FOS	1.00
494	-316978.97	6258879.5	0.218218	-33.497142	60 M from FOS	1.00
495	-316411.22	6257101.5	0.222646	-33.513422	60 M from FOS	1.00
496	-315813.84	6255333	0.227399	-33.52964	60 M from FOS	1.00
497	-315187.13	6253575.5	0.232475	-33.545782	60 M from FOS	1.00
498	-314531	6251828	0.237875	-33.561858	60 M from FOS	1.00
499	-313845.91	6250092	0.243595	-33.577853	60 M from FOS	1.00
500	-313131.88	6248367.5	0.249636	-33.593767	60 M from FOS	1.00
501	-312389.13	6246655	0.255995	-33.609597	60 M from FOS	1.00
502	-311617.81	6244955	0.262671	-33.625337	60 M from FOS	1.00
503	-310818.31	6243268.5	0.269662	-33.640977	60 M from FOS	1.00
504	-309990.78	6241595.5	0.276966	-33.656519	60 M from FOS	1.00
505	-309135.53	6239937	0.284581	-33.671953	60 M from FOS	1.00
506	-308252.59	6238293	0.292506	-33.687278	60 M from FOS	1.00
507	-307342.44	6236664	0.300738	-33.70249	60 M from FOS	1.00
508	-306405.13	6235050	0.309275	-33.717588	60 M from FOS	1.00
509	-305441	6233452	0.318116	-33.732565	60 M from FOS	1.00
510	-304450.5	6231870.5	0.327256	-33.747414	60 M from FOS	1.00
511	-303433.78	6230306	0.336694	-33.76213	60 M from FOS	1.00
512	-302390.94	6228758	0.346428	-33.77672	60 M from FOS	1.00
513	-301322.5	6227228.5	0.356456	-33.791163	60 M from FOS	1.00
514	-300228.75	6225717	0.366773	-33.805465	60 M from FOS	1.00
515	-299109.91	6224224	0.377378	-33.81962	60 M from FOS	1.00
516	-297966.31	6222749.5	0.388267	-33.833628	60 M from FOS	1.00
517	-296798.28	6221294.5	0.399439	-33.847481	60 M from FOS	1.00
518	-295606.13	6219859	0.410889	-33.861177	60 M from FOS	1.00
519	-294390.25	6218444	0.422615	-33.874708	60 M from FOS	1.00

IDENTIFIER	EASTINGS (m)	NORTHINGS (m)	LONGITUDE (decimal degrees)	LATITUDE (decimal degrees)	PROVISION OF ARTICLE 76	DISTANCE TO PREVIOUS POINT (M)
520	-293151.03	6217049.5	0.434612	-33.888073	60 M from FOS	1.00
521	-291888.69	6215676	0.446879	-33.901267	60 M from FOS	1.00
522	-290603.56	6214323.5	0.459413	-33.914291	60 M from FOS	1.00
523	-289296	6212993	0.47221	-33.927134	60 M from FOS	1.00
524	-226428.86	6150051	1.092852	-34.534518	60 M from FOS	47.72
525	-225101.94	6148742.5	1.106063	-34.547138	60 M from FOS	1.00
526	-223753.41	6147456.5	1.119532	-34.559572	60 M from FOS	1.00
527	-222383.69	6146193.5	1.133252	-34.571814	60 M from FOS	1.00
528	-220993.03	6144953.5	1.147223	-34.583865	60 M from FOS	1.00
529	-219581.97	6143736.5	1.161437	-34.595723	60 M from FOS	1.00
530	-218150.75	6142543.5	1.175893	-34.607379	60 M from FOS	1.00
531	-216700	6141374.5	1.190585	-34.618834	60 M from FOS	1.00
532	-215230.03	6140230	1.205509	-34.630082	60 M from FOS	1.00
533	-213741.2	6139110.5	1.220662	-34.641118	60 M from FOS	1.00
534	-212233.83	6138016	1.236041	-34.651942	60 M from FOS	1.00
535	-210708.47	6136946.5	1.251639	-34.662554	60 M from FOS	1.00
536	-209165.45	6135902.5	1.267454	-34.672949	60 M from FOS	1.00
537	-207605.42	6134884.5	1.283478	-34.683121	60 M from FOS	1.00
538	-206028.66	6133893	1.29971	-34.693067	60 M from FOS	1.00
539	-204435.5	6132927.5	1.316145	-34.70279	60 M from FOS	1.00
540	-202826.58	6131989.5	1.332778	-34.712276	60 M from FOS	1.00
541	-201202.39	6131078	1.349602	-34.721534	60 M from FOS	1.00
542	-199563.25	6130194	1.366614	-34.730555	60 M from FOS	1.00
543	-197909.47	6129337	1.383811	-34.739342	60 M from FOS	1.00
544	-196241.81	6128508	1.401186	-34.747886	60 M from FOS	1.00
545	-194560.58	6127707	1.418735	-34.756188	60 M from FOS	1.00
546	-192866.25	6126934	1.436452	-34.764245	60 M from FOS	1.00
547	-191159.25	6126189.5	1.454333	-34.772055	60 M from FOS	1.00
548	-189440.17	6125473.5	1.472373	-34.779615	60 M from FOS	1.00
549	-187709.38	6124786.5	1.490567	-34.786922	60 M from FOS	1.00
550	-185967.45	6124128.5	1.508909	-34.793975	60 M from FOS	1.00

IDENTIFIER	EASTINGS (m)	NORTHINGS (m)	LONGITUDE (decimal degrees)	LATITUDE (decimal degrees)	PROVISION OF ARTICLE 76	DISTANCE TO PREVIOUS POINT (M)
551	-184214.95	6123499.5	1.527392	-34.800773	60 M from FOS	1.00
552	-182452.23	6122899.5	1.546013	-34.807316	60 M from FOS	1.00
553	-180679.81	6122329.5	1.564768	-34.813595	60 M from FOS	1.00
554	-179114.61	6121853	1.581353	-34.818898	60 M from FOS	0.88
555	-177325.31	6121338.5	1.600341	-34.824686	60 M from FOS	1.00
556	-175527.78	6120854	1.619446	-34.83021	60 M from FOS	1.00
557	-173722.34	6120400	1.638663	-34.835463	60 M from FOS	1.00
558	-171909.67	6119975.5	1.657986	-34.840454	60 M from FOS	1.00
559	-170090.22	6119581.5	1.67741	-34.845175	60 M from FOS	1.00
560	-168264.58	6119218	1.696927	-34.849623	60 M from FOS	1.00
561	-166433.13	6118885	1.716535	-34.8538	60 M from FOS	1.00
562	-164596.45	6118583	1.736226	-34.8577	60 M from FOS	1.00
563	-162755.09	6118311	1.755994	-34.861331	60 M from FOS	1.00
564	-160909.5	6118070	1.775835	-34.864685	60 M from FOS	1.00
565	-159060.17	6117859.5	1.795742	-34.867765	60 M from FOS	1.00
566	-157207.64	6117680.5	1.815711	-34.870563	60 M from FOS	1.00
567	-155352.48	6117532	1.835734	-34.873086	60 M from FOS	1.00
568	-153495.14	6117414.5	1.855807	-34.87533	60 M from FOS	1.00
569	-151636.17	6117328	1.875923	-34.877294	60 M from FOS	1.00
570	-149776.06	6117272.5	1.896077	-34.878979	60 M from FOS	1.00
571	-147915.31	6117247.5	1.916263	-34.880388	60 M from FOS	1.00
572	-146054.5	6117254.5	1.936476	-34.881507	60 M from FOS	1.00
573	-144194.09	6117292	1.956708	-34.882349	60 M from FOS	1.00
574	-142334.64	6117360.5	1.976956	-34.882911	60 M from FOS	1.00
575	-140476.61	6117459.5	1.997211	-34.883194	60 M from FOS	1.00
576	-138620.58	6117590	2.01747	-34.883192	60 M from FOS	1.00
577	-136767.03	6117751.5	2.037726	-34.882907	60 M from FOS	1.00
578	-134916.47	6117943.5	2.057973	-34.882343	60 M from FOS	1.00
579	-133069.44	6118166.5	2.078205	-34.881497	60 M from FOS	1.00
580	-131226.38	6118420	2.098418	-34.880371	60 M from FOS	1.00
581	-129387.89	6118704.5	2.118604	-34.878962	60 M from FOS	1.00

IDENTIFIER	EASTINGS (m)	NORTHINGS (m)	LONGITUDE (decimal degrees)	LATITUDE (decimal degrees)	PROVISION OF ARTICLE 76	DISTANCE TO PREVIOUS POINT (M)
582	-127554.45	6119019.5	2.138757	-34.877273	60 M from FOS	1.00
583	-125726.59	6119365	2.158873	-34.875304	60 M from FOS	1.00
584	-123904.77	6119740.5	2.178945	-34.873059	60 M from FOS	1.00
585	-122089.48	6120146.5	2.198968	-34.870534	60 M from FOS	1.00
586	-120281.28	6120583	2.218935	-34.867728	60 M from FOS	1.00
587	-118480.63	6121049.5	2.238842	-34.864645	60 M from FOS	1.00
588	-116688.06	6121545.5	2.258682	-34.86129	60 M from FOS	1.00
589	-114904.02	6122071.5	2.27845	-34.857657	60 M from FOS	1.00
590	-113129.02	6122627	2.298141	-34.853751	60 M from FOS	1.00
591	-111363.62	6123212	2.317746	-34.849572	60 M from FOS	1.00
592	-109608.29	6123826.5	2.337263	-34.845119	60 M from FOS	1.00
593	-107863.38	6124470	2.356685	-34.840397	60 M from FOS	1.00
594	-106129.49	6125142.5	2.376007	-34.835405	60 M from FOS	1.00
595	-104407.21	6125843.5	2.395222	-34.830148	60 M from FOS	1.00
596	-102696.76	6126573.5	2.414326	-34.824621	60 M from FOS	1.00
597	-100998.84	6127331.5	2.433313	-34.818832	60 M from FOS	1.00
598	-99313.8	6128118	2.452177	-34.812776	60 M from FOS	1.00
599	-97642.19	6128932.5	2.470913	-34.806459	60 M from FOS	1.00
600	-95984.39	6129774	2.489516	-34.799889	60 M from FOS	1.00
601	-94340.86	6130643.5	2.507981	-34.793056	60 M from FOS	1.00
602	-92712.04	6131540	2.526302	-34.78597	60 M from FOS	1.00
603	-91098.36	6132463.5	2.544475	-34.77863	60 M from FOS	1.00
604	-89500.38	6133414	2.562494	-34.771036	60 M from FOS	1.00
605	-87918.47	6134391	2.580353	-34.763192	60 M from FOS	1.00
606	-86352.98	6135394	2.59805	-34.755102	60 M from FOS	1.00
607	-84804.55	6136423	2.615575	-34.746767	60 M from FOS	1.00
608	-83273.4	6137477	2.632927	-34.738195	60 M from FOS	1.00
609	-81760.19	6138557	2.650099	-34.729377	60 M from FOS	1.00
610	-80265.18	6139662	2.667087	-34.720322	60 M from FOS	1.00
611	-78788.7	6140791.5	2.683888	-34.711034	60 M from FOS	1.00
612	-77331.38	6141945.5	2.700493	-34.701512	60 M from FOS	1.00

IDENTIFIER	EASTINGS (m)	NORTHINGS (m)	LONGITUDE (decimal degrees)	LATITUDE (decimal degrees)	PROVISION OF ARTICLE 76	DISTANCE TO PREVIOUS POINT (M)
613	-75893.52	6143123.5	2.7169	-34.691762	60 M from FOS	1.00
614	-74475.41	6144325	2.733105	-34.681788	60 M from FOS	1.00
615	-73077.49	6145550.5	2.749103	-34.671584	60 M from FOS	1.00
616	-71700.28	6146798.5	2.764888	-34.661165	60 M from FOS	1.00
617	-70344.09	6148069.5	2.780456	-34.650525	60 M from FOS	1.00
618	-14815.78	6200722	3.414915	-34.207333	60 M from FOS	41.19
619	-13477.07	6202009.5	3.43014	-34.196436	60 M from FOS	1.00
620	-12159.89	6203318.5	3.445142	-34.185333	60 M from FOS	1.00
621	-10864.74	6204649.5	3.459914	-34.17402	60 M from FOS	1.00
622	-9591.92	6206002.5	3.474455	-34.162497	60 M from FOS	1.00
623	-8341.85	6207375.5	3.488758	-34.15078	60 M from FOS	1.00
624	-7114.81	6208769.5	3.50282	-34.138862	60 M from FOS	1.00
625	-5911.18	6210184	3.516637	-34.126747	60 M from FOS	1.00
626	-4731.18	6211618	3.530207	-34.114443	60 M from FOS	1.00
627	-3575.26	6213072	3.543525	-34.101946	60 M from FOS	1.00
628	-2443.82	6214544	3.556584	-34.089274	60 M from FOS	1.00
629	-1336.93	6216035	3.569386	-34.076417	60 M from FOS	1.00
630	-255.05	6217545	3.581925	-34.063377	60 M from FOS	1.00
631	801.52	6219072	3.594197	-34.05017	60 M from FOS	1.00
632	1832.46	6220616.5	3.606198	-34.036792	60 M from FOS	1.00
633	2837.45	6222177.5	3.617925	-34.023252	60 M from FOS	1.00
634	3816.36	6223755.5	3.629376	-34.009546	60 M from FOS	1.00
635	4768.82	6225349.5	3.640547	-33.995682	60 M from FOS	1.00
636	5694.59	6226959	3.651436	-33.981665	60 M from FOS	1.00
637	6593.52	6228583.5	3.66204	-33.9675	60 M from FOS	1.00
638	7465.32	6230223.5	3.672357	-33.953181	60 M from FOS	1.00
639	8309.63	6231877	3.682381	-33.938727	60 M from FOS	1.00
640	9126.41	6233544.5	3.692113	-33.924134	60 M from FOS	1.00
641	9915.1	6235225.5	3.701546	-33.909405	60 M from FOS	1.00
642	10675.8	6236919	3.710682	-33.894549	60 M from FOS	1.00
643	11408.25	6238625	3.719516	-33.879568	60 M from FOS	1.00

IDENTIFIER	EASTINGS (m)	NORTHINGS (m)	LONGITUDE (decimal degrees)	LATITUDE (decimal degrees)	PROVISION OF ARTICLE 76	DISTANCE TO PREVIOUS POINT (M)
644	32233.92	6287768.5	3.969641	-33.447477	60 M from FOS	28.75
645	32929.55	6289489.5	3.97799	-33.432317	60 M from FOS	1.00
646	33596.37	6291222	3.986033	-33.41704	60 M from FOS	1.00
647	34234.33	6292965.5	3.99377	-33.401651	60 M from FOS	1.00
648	34843.15	6294718.5	4.001196	-33.386163	60 M from FOS	1.00
649	35422.71	6296482.5	4.008312	-33.370564	60 M from FOS	1.00
650	35972.81	6298255	4.015113	-33.354874	60 M from FOS	1.00
651	36493.29	6300036.5	4.0216	-33.33909	60 M from FOS	1.00
652	36984.11	6301826.5	4.02777	-33.323216	60 M from FOS	1.00
653	37444.99	6303625	4.033622	-33.307253	60 M from FOS	1.00
654	37875.86	6305430	4.039154	-33.291218	60 M from FOS	1.00
655	38276.63	6307242	4.044365	-33.275107	60 M from FOS	1.00
656	38647.33	6309061	4.049255	-33.258919	60 M from FOS	1.00
657	38987.61	6310885.5	4.053821	-33.242669	60 M from FOS	1.00
658	39297.56	6312716	4.058063	-33.226351	60 M from FOS	1.00
659	39576.86	6314550.5	4.061978	-33.209984	60 M from FOS	1.00
660	39825.65	6316390	4.065567	-33.193559	60 M from FOS	1.00
661	40043.72	6318233	4.068829	-33.17709	60 M from FOS	1.00
662	40231.21	6320079.5	4.071763	-33.160575	60 M from FOS	1.00
663	40387.91	6321928.5	4.074368	-33.144025	60 M from FOS	1.00
664	40513.74	6323780.5	4.076644	-33.127435	60 M from FOS	1.00
665	40608.76	6325634.5	4.078591	-33.110814	60 M from FOS	1.00
666	40672.98	6327489.5	4.080208	-33.09417	60 M from FOS	1.00
667	40706.26	6329345	4.081494	-33.077509	60 M from FOS	1.00
668	40708.67	6331201.5	4.08245	-33.060826	60 M from FOS	1.00
669	40680.16	6333057	4.083075	-33.044138	60 M from FOS	1.00
670	40620.79	6334912.5	4.08337	-33.027438	60 M from FOS	1.00
671	40530.59	6336766	4.083334	-33.010742	60 M from FOS	1.00
672	40409.46	6338618	4.082968	-32.994047	60 M from FOS	1.00
673	40257.57	6340468	4.082272	-32.977357	60 M from FOS	1.00
674	40074.89	6342315.5	4.081247	-32.960677	60 M from FOS	1.00

IDENTIFIER	EASTINGS (m)	NORTHINGS (m)	LONGITUDE (decimal degrees)	LATITUDE (decimal degrees)	PROVISION OF ARTICLE 76	DISTANCE TO PREVIOUS POINT (M)
675	39861.46	6344159.5	4.079892	-32.944015	60 M from FOS	1.00
676	39617.46	6345999	4.07821	-32.92738	60 M from FOS	1.00
677	39309.98	6348032	4.075947	-32.90898	60 M from FOS	1.11
678	37721.8	6459385.5	4.113391	-31.90747	60 M from FOS	60.00
679	83499.59	6523956	4.623345	-31.344292	60 M from FOS	42.65
680	84558.44	6525479.5	4.635078	-31.330965	60 M from FOS	1.00
681	85591.77	6527020.5	4.646548	-31.31747	60 M from FOS	1.00
682	86599.23	6528578	4.65775	-31.303815	60 M from FOS	1.00
683	87580.63	6530152.5	4.668682	-31.289997	60 M from FOS	1.00
684	88535.67	6531743	4.679342	-31.276025	60 M from FOS	1.00
685	89464.08	6533349	4.689725	-31.261903	60 M from FOS	1.00
686	90365.64	6534970.5	4.699831	-31.247631	60 M from FOS	1.00
687	91240.04	6536606.5	4.709655	-31.233217	60 M from FOS	1.00
688	92087.08	6538257	4.719195	-31.218663	60 M from FOS	1.00
689	92906.52	6539921.5	4.728449	-31.203972	60 M from FOS	1.00
690	93698.13	6541599	4.737413	-31.189153	60 M from FOS	1.00
691	94461.67	6543289.5	4.746086	-31.174207	60 M from FOS	1.00
692	95197.02	6544992.5	4.754467	-31.159138	60 M from FOS	1.00
693	95903.9	6546707.5	4.762551	-31.14395	60 M from FOS	1.00
694	96582.09	6548434.5	4.770337	-31.128643	60 M from FOS	1.00
695	97231.41	6550172	4.777823	-31.113232	60 M from FOS	1.00
696	97851.77	6551920	4.785007	-31.097715	60 M from FOS	1.00
697	98442.87	6553678.5	4.791887	-31.082093	60 M from FOS	1.00
698	99004.72	6555446	4.798462	-31.06638	60 M from FOS	1.00
699	99536.98	6557223	4.80473	-31.05057	60 M from FOS	1.00
700	100039.57	6559008.5	4.810688	-31.034673	60 M from FOS	1.00
701	100512.41	6560802	4.816336	-31.018694	60 M from FOS	1.00
702	100955.27	6562603.5	4.821672	-31.002632	60 M from FOS	1.00
703	101368.16	6564411.5	4.826695	-30.986502	60 M from FOS	1.00
704	101750.86	6566226.5	4.831404	-30.970297	60 M from FOS	1.00
705	102103.29	6568048	4.835797	-30.954024	60 M from FOS	1.00

IDENTIFIER	EASTINGS (m)	NORTHINGS (m)	LONGITUDE (decimal degrees)	LATITUDE (decimal degrees)	PROVISION OF ARTICLE 76	DISTANCE TO PREVIOUS POINT (M)
706	102425.38	6569874.5	4.839874	-30.937695	60 M from FOS	1.00
707	102716.95	6571706	4.843632	-30.92131	60 M from FOS	1.00
708	102978.02	6573542.5	4.847073	-30.90487	60 M from FOS	1.00
709	103208.5	6575383	4.850194	-30.888384	60 M from FOS	1.00
710	103408.33	6577227.5	4.852996	-30.871851	60 M from FOS	1.00
711	103577.36	6579074.5	4.855475	-30.855285	60 M from FOS	1.00
712	103715.67	6580924	4.857635	-30.838686	60 M from FOS	1.00
713	108770.95	6651926.5	4.937081	-30.201273	60 M from FOS	38.38
714	108872.55	6653778.5	4.938819	-30.184634	60 M from FOS	1.00
715	108943.36	6655632	4.940238	-30.167972	60 M from FOS	1.00
716	108983.27	6657486	4.941336	-30.151296	60 M from FOS	1.00
717	108992.3	6659341	4.942114	-30.134601	60 M from FOS	1.00
718	108970.47	6661195.5	4.942572	-30.1179	60 M from FOS	1.00
719	108917.78	6663049.5	4.942709	-30.101194	60 M from FOS	1.00
720	108834.2	6664902.5	4.942526	-30.084487	60 M from FOS	1.00
721	108719.84	6666753.5	4.942024	-30.067788	60 M from FOS	1.00
722	108574.7	6668602.5	4.941202	-30.051097	60 M from FOS	1.00
723	108398.71	6670449	4.94006	-30.034419	60 M from FOS	1.00
724	108192.08	6672292	4.938599	-30.017763	60 M from FOS	1.00
725	107954.76	6674132	4.936821	-30.001123	60 M from FOS	1.00
726	107686.91	6675967	4.934725	-29.984519	60 M from FOS	1.00
727	107388.45	6677797.5	4.932311	-29.967946	60 M from FOS	1.00
728	107059.6	6679623	4.929582	-29.951408	60 M from FOS	1.00
729	106700.43	6681442.5	4.926538	-29.934914	60 M from FOS	1.00
730	106311.03	6683256	4.92318	-29.918465	60 M from FOS	1.00
731	105891.42	6685063	4.919508	-29.902064	60 M from FOS	1.00
732	105441.87	6686862.5	4.915525	-29.885722	60 M from FOS	1.00
733	104962.34	6688654	4.911231	-29.869442	60 M from FOS	1.00
734	104453.09	6690437.5	4.906627	-29.853224	60 M from FOS	1.00
735	103914.23	6692212.5	4.901716	-29.837073	60 M from FOS	1.00
736	103345.88	6693978.5	4.896499	-29.820994	60 M from FOS	1.00

IDENTIFIER	EASTINGS (m)	NORTHINGS (m)	LONGITUDE (decimal degrees)	LATITUDE (decimal degrees)	PROVISION OF ARTICLE 76	DISTANCE TO PREVIOUS POINT (M)
737	102748.22	6695734	4.890976	-29.804999	60 M from FOS	1.00
738	101951.69	6697929	4.883565	-29.784985	60 M from FOS	1.26
739	115511.17	6808385.5	5.061906	-28.794727	60 M from FOS	60.00
740	116511.76	6809947	5.072662	-28.780964	60 M from FOS	1.00
741	117486.2	6811525	5.083154	-28.767044	60 M from FOS	1.00
742	118434.2	6813119	5.093378	-28.752971	60 M from FOS	1.00
743	119355.54	6814728.5	5.103332	-28.738749	60 M from FOS	1.00
744	120250.01	6816353.5	5.113014	-28.724378	60 M from FOS	1.00
745	121117.14	6817992.5	5.122418	-28.709873	60 M from FOS	1.00
746	121956.98	6819646	5.131545	-28.695228	60 M from FOS	1.00
747	122769.02	6821313.5	5.140391	-28.680448	60 M from FOS	1.00
748	123598.44	6823095	5.149449	-28.664645	60 M from FOS	1.06
749	208332.97	6895144.5	6.033299	-28.037028	60 M from FOS	60.00
750	210128.45	6895603.5	6.051655	-28.033283	60 M from FOS	1.00
751	211915.97	6896092.5	6.069936	-28.029263	60 M from FOS	1.00
752	213695.17	6896611	6.088139	-28.024973	60 M from FOS	1.00
753	215465.38	6897159	6.106256	-28.020413	60 M from FOS	1.00
754	217226.17	6897736.5	6.124283	-28.015582	60 M from FOS	1.00
755	218977.14	6898343.5	6.142217	-28.010481	60 M from FOS	1.00
756	220717.7	6898979	6.160049	-28.005118	60 M from FOS	1.00
757	222447.45	6899644	6.177778	-27.999484	60 M from FOS	1.00
758	224165.77	6900337.5	6.195395	-27.993588	60 M from FOS	1.00
759	225872.31	6901059.5	6.212897	-27.987431	60 M from FOS	1.00
760	227566.63	6901810	6.23028	-27.981012	60 M from FOS	1.00
761	229248.08	6902588	6.247537	-27.97434	60 M from FOS	1.00
762	230916.41	6903394.5	6.264665	-27.967406	60 M from FOS	1.00
763	232571.02	6904228.5	6.281658	-27.960219	60 M from FOS	1.00
764	234211.52	6905089.5	6.298511	-27.952783	60 M from FOS	1.00
765	235837.36	6905978.5	6.31522	-27.94509	60 M from FOS	1.00
766	237448.13	6906894	6.331779	-27.937153	60 M from FOS	1.00
767	240622.95	6908805	6.364434	-27.920541	60 M from FOS	2.00

IDENTIFIER	EASTINGS (m)	NORTHINGS (m)	LONGITUDE (decimal degrees)	LATITUDE (decimal degrees)	PROVISION OF ARTICLE 76	DISTANCE TO PREVIOUS POINT (M)
768	242186.03	6909800	6.38052	-27.911871	60 M from FOS	1.00
769	324975.91	6962956	7.229042	-27.445653	60 M from FOS	53.11
770	326534.13	6963956.5	7.244946	-27.436825	60 M from FOS	1.00
771	328075.53	6964983	7.260681	-27.427757	60 M from FOS	1.00
772	329599.66	6966035	7.276242	-27.418455	60 M from FOS	1.00
773	331105.91	6967112.5	7.291623	-27.40892	60 M from FOS	1.00
774	332594	6968215	7.306821	-27.399154	60 M from FOS	1.00
775	334063.56	6969342	7.321833	-27.389163	60 M from FOS	1.00
776	335514.16	6970493	7.336654	-27.378952	60 M from FOS	1.00
777	336945.34	6971668.5	7.351279	-27.368516	60 M from FOS	1.00
778	338356.72	6972867.5	7.365704	-27.357863	60 M from FOS	1.00
779	339747.88	6974089.5	7.379925	-27.346999	60 M from FOS	1.00
780	396735.47	7026662.5	7.960341	-26.87792	60 M from FOS	41.87
781	493769.22	6982455.5	8.937042	-27.280853	60 M from FOS	57.60
782	564326.5	6896894.5	9.654545	-28.051729	60 M from FOS	59.90
783	539638.13	6788678	9.407076	-29.029497	60 M from FOS	59.96
784	538137.44	6787594	9.391702	-29.039327	60 M from FOS	1.00
785	536655.06	6786485	9.376513	-29.04938	60 M from FOS	1.00
786	535191.44	6785351.5	9.361515	-29.059652	60 M from FOS	1.00
787	533746.81	6784193.5	9.34671	-29.070143	60 M from FOS	1.00
788	532321.81	6783011.5	9.332104	-29.080848	60 M from FOS	1.00
789	530916.56	6781806.5	9.317699	-29.091759	60 M from FOS	1.00
790	529531.63	6780578	9.3035	-29.10288	60 M from FOS	1.00
791	528167.38	6779326	9.289511	-29.114211	60 M from FOS	1.00
792	526824.13	6778052	9.275736	-29.125739	60 M from FOS	1.00
793	525502.38	6776756	9.262179	-29.137464	60 M from FOS	1.00
794	524202.47	6775438	9.248844	-29.149385	60 M from FOS	1.00
795	522924.59	6774098.5	9.235733	-29.161499	60 M from FOS	1.00
796	521669.28	6772737.5	9.222851	-29.173805	60 M from FOS	1.00
797	520436.81	6771356	9.210201	-29.186294	60 M from FOS	1.00
798	519227.44	6769954.5	9.197787	-29.198963	60 M from FOS	1.00

IDENTIFIER	EASTINGS (m)	NORTHINGS (m)	LONGITUDE (decimal degrees)	LATITUDE (decimal degrees)	PROVISION OF ARTICLE 76	DISTANCE TO PREVIOUS POINT (M)
799	518041.66	6768532.5	9.185612	-29.211815	60 M from FOS	1.00
800	516879.78	6767091.5	9.173681	-29.224837	60 M from FOS	1.00
801	515742.16	6765631	9.161996	-29.238033	60 M from FOS	1.00
802	514628.88	6764152	9.15056	-29.251396	60 M from FOS	1.00
803	513540.41	6762654.5	9.139375	-29.264923	60 M from FOS	1.00
804	512477.09	6761139	9.128448	-29.278613	60 M from FOS	1.00
805	511439.09	6759606	9.117778	-29.292459	60 M from FOS	1.00
806	510426.84	6758056	9.10737	-29.306457	60 M from FOS	1.00
807	509440.66	6756489	9.097228	-29.320608	60 M from FOS	1.00
808	508450.97	6754856	9.087048	-29.335354	350 M from Baseline	1.03
809	508782	6753872.5	9.090466	-29.344228	350 M from Baseline	0.56
810	509377.69	6752120	9.096617	-29.360041	350 M from Baseline	1.00
811	509978.34	6750368.5	9.102821	-29.375844	350 M from Baseline	1.00
812	510584.03	6748619	9.109079	-29.391629	350 M from Baseline	1.00
813	511194.63	6746871.5	9.11539	-29.407396	350 M from Baseline	1.00
814	511810.22	6745125.5	9.121754	-29.423149	350 M from Baseline	1.00
815	512430.72	6743381.5	9.128171	-29.438883	350 M from Baseline	1.00
816	513056.31	6741639	9.134642	-29.454603	350 M from Baseline	1.00
817	513686.75	6739898.5	9.141165	-29.470305	350 M from Baseline	1.00
818	514322.22	6738160	9.147742	-29.485988	350 M from Baseline	1.00
819	514962.56	6736422.5	9.154371	-29.501662	350 M from Baseline	1.00
820	515607.75	6734687.5	9.161052	-29.517313	350 M from Baseline	1.00
821	516258.13	6732954.5	9.167789	-29.532946	350 M from Baseline	1.00
822	516913.31	6731222.5	9.174578	-29.548568	350 M from Baseline	1.00
823	517573.44	6729493	9.181419	-29.564168	350 M from Baseline	1.00
824	518238.56	6727765.5	9.188315	-29.57975	350 M from Baseline	1.00
825	518908.41	6726039.5	9.195261	-29.595317	350 M from Baseline	1.00
826	519583.28	6724316	9.202261	-29.610861	350 M from Baseline	1.00
827	520263	6722594	9.209313	-29.626392	350 M from Baseline	1.00
828	520947.59	6720874	9.216418	-29.641903	350 M from Baseline	1.00
829	521637.22	6719156	9.223577	-29.657397	350 M from Baseline	1.00

IDENTIFIER	EASTINGS (m)	NORTHINGS (m)	LONGITUDE (decimal degrees)	LATITUDE (decimal degrees)	PROVISION OF ARTICLE 76	DISTANCE TO PREVIOUS POINT (M)
830	522331.66	6717440	9.230788	-29.672871	350 M from Baseline	1.00
831	523030.97	6715726	9.238052	-29.688327	350 M from Baseline	1.00
832	523735.09	6714013.5	9.245367	-29.703769	350 M from Baseline	1.00
833	524444.19	6712303.5	9.252736	-29.719188	350 M from Baseline	1.00
834	525158.19	6710595.5	9.260158	-29.734588	350 M from Baseline	1.00
835	525877.06	6708889.5	9.267633	-29.74997	350 M from Baseline	1.00
836	526600.56	6707185.5	9.275157	-29.765333	350 M from Baseline	1.00
837	527329.06	6705483.5	9.282736	-29.780677	350 M from Baseline	1.00
838	528062.38	6703784	9.290367	-29.795998	350 M from Baseline	1.00
839	528800.56	6702086	9.29805	-29.811305	350 M from Baseline	1.00
840	529543.56	6700390.5	9.305786	-29.826589	350 M from Baseline	1.00
841	530291.38	6698697	9.313574	-29.841854	350 M from Baseline	1.00
842	531044	6697005.5	9.321414	-29.857101	350 M from Baseline	1.00
843	531801.44	6695316.5	9.329306	-29.872324	350 M from Baseline	1.00
844	532563.69	6693629.5	9.33725	-29.887529	350 M from Baseline	1.00
845	533330.69	6691944.5	9.345246	-29.902715	350 M from Baseline	1.00
846	534102.63	6690261.5	9.353295	-29.917882	350 M from Baseline	1.00
847	534879.31	6688581.5	9.361396	-29.933021	350 M from Baseline	1.00
848	535660.63	6686903	9.369547	-29.948147	350 M from Baseline	1.00
849	536446.88	6685227	9.377752	-29.963248	350 M from Baseline	1.00
850	537237.88	6683553	9.386009	-29.978332	350 M from Baseline	1.00
851	538033.5	6681881.5	9.394316	-29.993391	350 M from Baseline	1.00
852	538834	6680212	9.402676	-30.008433	350 M from Baseline	1.00
853	539639.13	6678545.5	9.411086	-30.023446	350 M from Baseline	1.00
854	540449.06	6676880.5	9.419549	-30.038445	350 M from Baseline	1.00
855	541263.81	6675218.5	9.428064	-30.053416	350 M from Baseline	1.00
856	542083.19	6673558	9.436629	-30.068373	350 M from Baseline	1.00
857	542907.38	6671900.5	9.445247	-30.083302	350 M from Baseline	1.00
858	543702.94	6670311	9.453568	-30.097618	350 M from Baseline	0.96
859	543735.69	6670245	9.453911	-30.098212	350 M from Baseline	0.04
860	544454.75	6668796.5	9.461434	-30.111258	350 M from Baseline	0.87

IDENTIFIER	EASTINGS (m)	NORTHINGS (m)	LONGITUDE (decimal degrees)	LATITUDE (decimal degrees)	PROVISION OF ARTICLE 76	DISTANCE TO PREVIOUS POINT (M)
861	544544	6668579.5	9.462369	-30.113213	350 M from Baseline	0.13
862	545250.81	6666868	9.469779	-30.128631	350 M from Baseline	1.00
863	545962.31	6665159	9.47724	-30.144027	350 M from Baseline	1.00
864	546678.69	6663452	9.484753	-30.159404	350 M from Baseline	1.00
865	547399.94	6661747	9.492319	-30.174762	350 M from Baseline	1.00
866	548126	6660044	9.499938	-30.190101	350 M from Baseline	1.00
867	548856.94	6658343	9.50761	-30.205422	350 M from Baseline	1.00
868	549592.63	6656644	9.515333	-30.220724	350 M from Baseline	1.00
869	550333.31	6654947.5	9.52311	-30.236002	350 M from Baseline	1.00
870	551078.69	6653252.5	9.530939	-30.251267	350 M from Baseline	1.00
871	551829.06	6651560	9.538822	-30.266508	350 M from Baseline	1.00
872	552584.06	6649869.5	9.546755	-30.28173	350 M from Baseline	1.00
873	552813	6649359.5	9.549161	-30.286322	350 M from Baseline	0.30
874	553337.5	6648179	9.554675	-30.296952	350 M from Baseline	0.70
875	554093.19	6646488.5	9.56262	-30.312173	350 M from Baseline	1.00
876	554853.63	6644801	9.570617	-30.327366	350 M from Baseline	1.00
877	555618.81	6643115	9.578666	-30.342545	350 M from Baseline	1.00
878	556389.06	6641431.5	9.58677	-30.357701	350 M from Baseline	1.00
879	557163.81	6639750	9.594924	-30.372837	350 M from Baseline	1.00
880	557943.5	6638071	9.603131	-30.387951	350 M from Baseline	1.00
881	558727.81	6636394	9.611388	-30.403045	350 M from Baseline	1.00
882	559517.06	6634719.5	9.6197	-30.418117	350 M from Baseline	1.00
883	560310.94	6633047	9.628062	-30.433169	350 M from Baseline	1.00
884	561109.63	6631376.5	9.636477	-30.448202	350 M from Baseline	1.00
885	561913	6629709	9.644943	-30.463208	350 M from Baseline	1.00
886	562721.13	6628043.5	9.653461	-30.478194	350 M from Baseline	1.00
887	563534.06	6626380	9.662032	-30.493162	350 M from Baseline	1.00
888	564351.69	6624719	9.670654	-30.508106	350 M from Baseline	1.00
889	565174.06	6623060.5	9.679328	-30.523027	350 M from Baseline	1.00
890	566001.19	6621404	9.688054	-30.537928	350 M from Baseline	1.00
891	566833	6619750	9.696832	-30.552807	350 M from Baseline	1.00

IDENTIFIER	EASTINGS (m)	NORTHINGS (m)	LONGITUDE (decimal degrees)	LATITUDE (decimal degrees)	PROVISION OF ARTICLE 76	DISTANCE TO PREVIOUS POINT (M)
892	567669.5	6618098.5	9.705661	-30.567662	350 M from Baseline	1.00
893	568510.75	6616449	9.714542	-30.582497	350 M from Baseline	1.00
894	569356.63	6614802.5	9.723474	-30.597305	350 M from Baseline	1.00
895	570207.13	6613158	9.732457	-30.612094	350 M from Baseline	1.00
896	571062.5	6611515.5	9.741493	-30.626864	350 M from Baseline	1.00
897	571922.44	6609876	9.750579	-30.641605	350 M from Baseline	1.00
898	572787.06	6608239	9.759717	-30.656323	350 M from Baseline	1.00
899	573656.25	6606604.5	9.768906	-30.671018	350 M from Baseline	1.00
900	574530.19	6604972	9.778146	-30.685693	350 M from Baseline	1.00
901	575408.69	6603342.5	9.787437	-30.700341	350 M from Baseline	1.00
902	576291.88	6601715	9.796779	-30.714969	350 M from Baseline	1.00
903	576667.5	6601026.5	9.800753	-30.721157	350 M from Baseline	0.42
904	577139.63	6600069.5	9.805756	-30.729761	350 M from Baseline	0.58
905	577962.5	6598411	9.814476	-30.744672	350 M from Baseline	1.00
906	578789.94	6596754.5	9.823247	-30.759563	350 M from Baseline	1.00
907	579622.25	6595101	9.832071	-30.774427	350 M from Baseline	1.00
908	580459.19	6593449.5	9.840946	-30.789271	350 M from Baseline	1.00
909	581300.88	6591800.5	9.849873	-30.804092	350 M from Baseline	1.00
910	582147.25	6590153.5	9.858852	-30.818893	350 M from Baseline	1.00
911	582998.19	6588509.5	9.867881	-30.833667	350 M from Baseline	1.00
912	583853.94	6586867.5	9.876963	-30.848421	350 M from Baseline	1.00
913	584714.13	6585228.5	9.886094	-30.863148	350 M from Baseline	1.00
914	585579.25	6583591.5	9.89528	-30.877855	350 M from Baseline	1.00
915	586448.94	6581957	9.904516	-30.892539	350 M from Baseline	1.00
916	587323.19	6580325	9.913802	-30.907199	350 M from Baseline	1.00
917	588202.06	6578695.5	9.923139	-30.921835	350 M from Baseline	1.00
918	589085.69	6577068.5	9.932529	-30.936448	350 M from Baseline	1.00
919	589973.88	6575444	9.941969	-30.951037	350 M from Baseline	1.00
920	590866.75	6573822	9.95146	-30.965602	350 M from Baseline	1.00
921	591764.19	6572202.5	9.961003	-30.980144	350 M from Baseline	1.00
922	592666.19	6570586	9.970595	-30.994657	350 M from Baseline	1.00

IDENTIFIER	EASTINGS (m)	NORTHINGS (m)	LONGITUDE (decimal degrees)	LATITUDE (decimal degrees)	PROVISION OF ARTICLE 76	DISTANCE TO PREVIOUS POINT (M)
923	593572.75	6568971.5	9.980239	-31.009151	350 M from Baseline	1.00
924	594484	6567360	9.989934	-31.023617	350 M from Baseline	1.00
925	595399.81	6565751	9.999679	-31.038059	350 M from Baseline	1.00
926	596320.19	6564144.5	10.009476	-31.052478	350 M from Baseline	1.00
927	597245.13	6562540.5	10.019322	-31.066872	350 M from Baseline	1.00
928	598174.63	6560939.5	10.02922	-31.081238	350 M from Baseline	1.00
929	599108.69	6559340.5	10.039167	-31.095586	350 M from Baseline	1.00
930	600047.31	6557745	10.049166	-31.1099	350 M from Baseline	1.00
931	600990.31	6556151.5	10.059213	-31.124195	350 M from Baseline	1.00
932	601938.06	6554561	10.069313	-31.138461	350 M from Baseline	1.00
933	602890.31	6552973	10.079463	-31.152704	350 M from Baseline	1.00
934	603847	6551388	10.089662	-31.166918	350 M from Baseline	1.00
935	604808.13	6549805.5	10.09991	-31.181109	350 M from Baseline	1.00
936	605773.81	6548225.5	10.110209	-31.195275	350 M from Baseline	1.00
937	606744.06	6546648.5	10.120559	-31.209413	350 M from Baseline	1.00
938	607718.75	6545074.5	10.130958	-31.223523	350 M from Baseline	1.00
939	608697.88	6543503	10.141407	-31.237609	350 M from Baseline	1.00
940	609681.5	6541934.5	10.151906	-31.251667	350 M from Baseline	1.00
941	610669.5	6540368.5	10.162454	-31.2657	350 M from Baseline	1.00
942	611662.13	6538805.5	10.173053	-31.279705	350 M from Baseline	1.00
943	612485.25	6537516.5	10.181843	-31.291254	350 M from Baseline	0.83
944	612657.31	6537244.5	10.183681	-31.293691	350 M from Baseline	0.17
945	613649.13	6535681	10.194278	-31.307698	350 M from Baseline	1.00
946	614645.38	6534120	10.204925	-31.321682	350 M from Baseline	1.00
947	615646.13	6532562.5	10.215621	-31.335633	350 M from Baseline	1.00
948	616651.25	6531007.5	10.226366	-31.349559	350 M from Baseline	1.00
949	617660.94	6529455.5	10.237163	-31.363457	350 M from Baseline	1.00
950	618674.88	6527906.5	10.248006	-31.377327	350 M from Baseline	1.00
951	619693.38	6526360	10.258901	-31.391173	350 M from Baseline	1.00
952	620716.06	6524816.5	10.269843	-31.40499	350 M from Baseline	1.00
953	621743.25	6523276	10.280834	-31.418778	350 M from Baseline	1.00

IDENTIFIER	EASTINGS (m)	NORTHINGS (m)	LONGITUDE (decimal degrees)	LATITUDE (decimal degrees)	PROVISION OF ARTICLE 76	DISTANCE TO PREVIOUS POINT (M)
954	622774.88	6521738	10.291876	-31.432542	350 M from Baseline	1.00
955	623810.94	6520203.5	10.302967	-31.446274	350 M from Baseline	1.00
956	624851.13	6518672	10.314104	-31.459976	350 M from Baseline	1.00
957	625895.75	6517143	10.325291	-31.473655	350 M from Baseline	1.00
958	626944.75	6515617	10.336527	-31.487305	350 M from Baseline	1.00
959	627998.06	6514094.5	10.347811	-31.500921	350 M from Baseline	1.00
960	629055.75	6512574.5	10.359144	-31.514514	350 M from Baseline	1.00
961	630117.81	6511057.5	10.370526	-31.528078	350 M from Baseline	1.00
962	631184.13	6509544	10.381956	-31.541609	350 M from Baseline	1.00
963	632254.63	6508033	10.393432	-31.555115	350 M from Baseline	1.00
964	633329.69	6506525	10.40496	-31.568593	350 M from Baseline	1.00
965	634408.81	6505020.5	10.416534	-31.582037	350 M from Baseline	1.00
966	635492.13	6503519	10.428154	-31.595453	350 M from Baseline	1.00
967	636579.88	6502020.5	10.439825	-31.60884	350 M from Baseline	1.00
968	637671.94	6500525	10.451544	-31.622199	350 M from Baseline	1.00
969	638768.06	6499032.5	10.463308	-31.635528	350 M from Baseline	1.00
970	639868.5	6497543.5	10.475121	-31.648825	350 M from Baseline	1.00
971	640973.31	6496057.5	10.486983	-31.662092	350 M from Baseline	1.00
972	642082.25	6494574	10.498892	-31.675335	350 M from Baseline	1.00
973	643195.38	6493094.5	10.510847	-31.68854	350 M from Baseline	1.00
974	644312.75	6491617.5	10.522851	-31.701721	350 M from Baseline	1.00
975	645434.25	6490144.5	10.5349	-31.714865	350 M from Baseline	1.00
976	646560.06	6488674	10.546999	-31.727983	350 M from Baseline	1.00
977	647689.94	6487207	10.559143	-31.741069	350 M from Baseline	1.00
978	648824	6485743	10.571334	-31.754125	350 M from Baseline	1.00
979	649627.81	6484710.5	10.579977	-31.763332	350 M from Baseline	0.71
980	649956.81	6484278.5	10.583516	-31.767185	350 M from Baseline	0.29
981	651081.06	6482807	10.595612	-31.780308	350 M from Baseline	1.00
982	652209.5	6481338.5	10.607755	-31.793402	350 M from Baseline	1.00
983	653342.06	6479873.5	10.619944	-31.806462	350 M from Baseline	1.00
984	654478.88	6478411.5	10.632181	-31.819494	350 M from Baseline	1.00

IDENTIFIER	EASTINGS (m)	NORTHINGS (m)	LONGITUDE (decimal degrees)	LATITUDE (decimal degrees)	PROVISION OF ARTICLE 76	DISTANCE TO PREVIOUS POINT (M)
985	655619.75	6476953	10.644465	-31.832492	350 M from Baseline	1.00
986	656764.75	6475498	10.656794	-31.845456	350 M from Baseline	1.00
987	657914	6474045.5	10.669172	-31.858396	350 M from Baseline	1.00
988	659067.19	6472597	10.681594	-31.871299	350 M from Baseline	1.00
989	660224.63	6471151	10.694064	-31.884176	350 M from Baseline	1.00
990	661386.13	6469709	10.70658	-31.897016	350 M from Baseline	1.00
991	661607.63	6469435	10.708967	-31.899455	350 M from Baseline	0.19
992	662540.38	6468261	10.719024	-31.909909	350 M from Baseline	0.81
993	663696	6466814	10.731485	-31.922792	350 M from Baseline	1.00
994	664855.88	6465370	10.743995	-31.935646	350 M from Baseline	1.00
995	666019.88	6463929.5	10.756551	-31.948466	350 M from Baseline	1.00
996	667187.88	6462492.5	10.769152	-31.961253	350 M from Baseline	1.00
997	668360	6461058.5	10.7818	-31.974011	350 M from Baseline	1.00
998	669536.06	6459628.5	10.794492	-31.98673	350 M from Baseline	1.00
999	670716.38	6458201	10.807233	-31.999425	350 M from Baseline	1.00
1000	671900.63	6456777	10.820018	-32.012087	350 M from Baseline	1.00
1001	673088.88	6455357	10.832848	-32.02471	350 M from Baseline	1.00
1002	674281.19	6453940	10.845724	-32.037304	350 M from Baseline	1.00
1003	675477.56	6452526.5	10.858646	-32.049864	350 M from Baseline	1.00
1004	676677.94	6451116.5	10.871614	-32.062391	350 M from Baseline	1.00
1005	677882.44	6449709.5	10.884628	-32.074889	350 M from Baseline	1.00
1006	679658.25	6447651	10.903818	-32.093169	350 M from Baseline	1.47