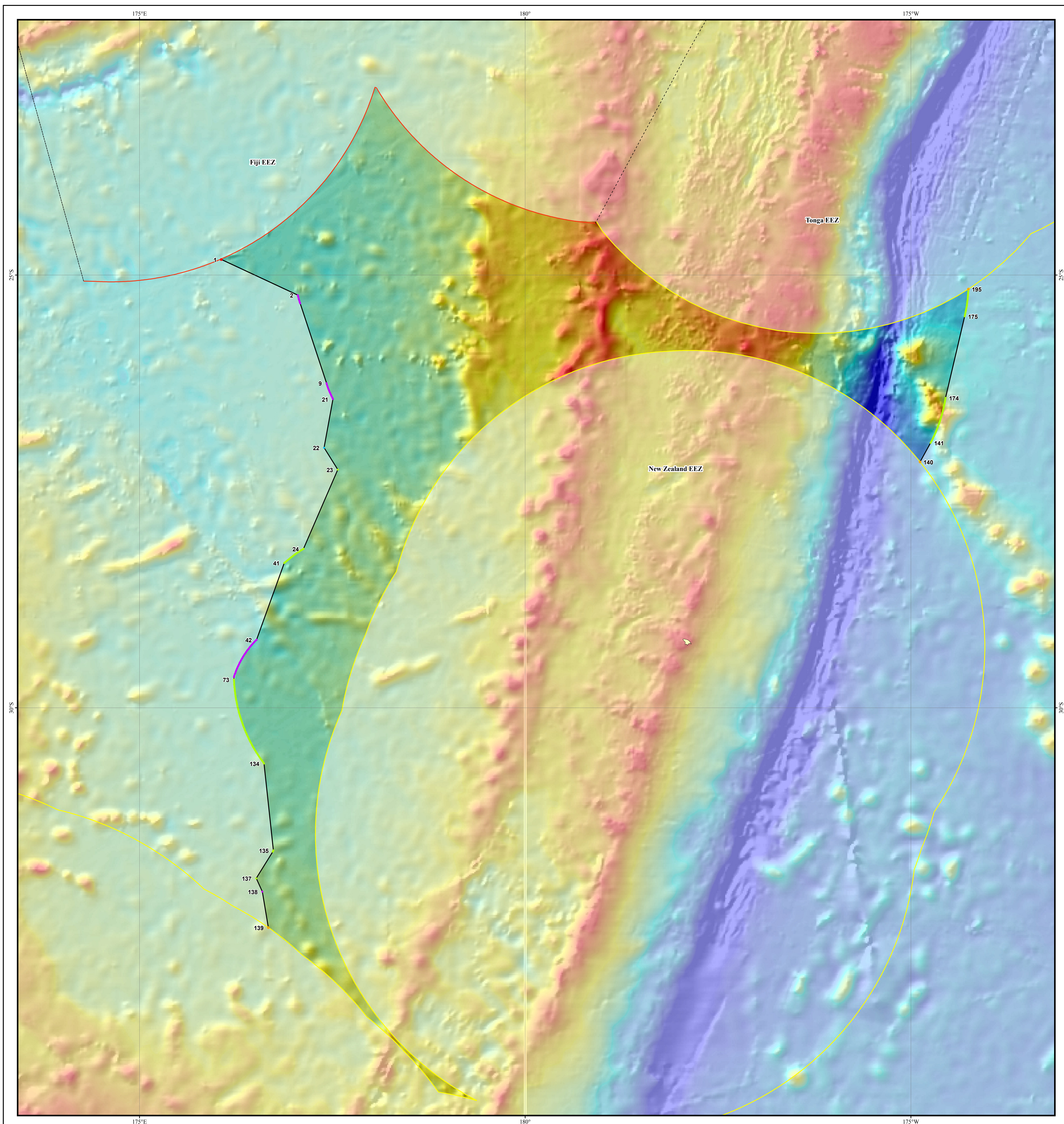
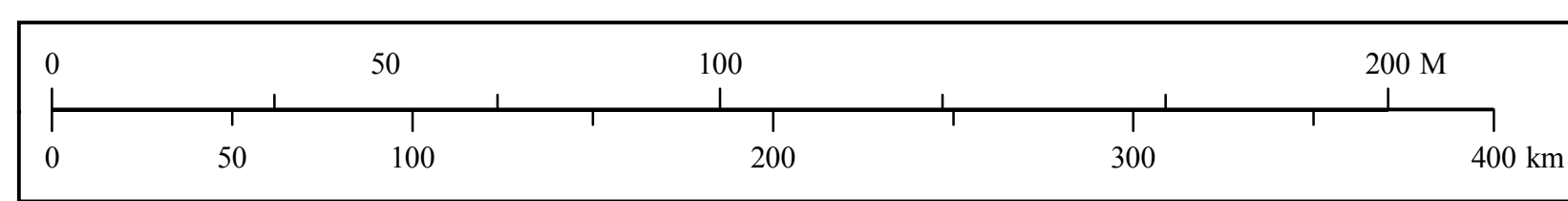


Republic of Fiji

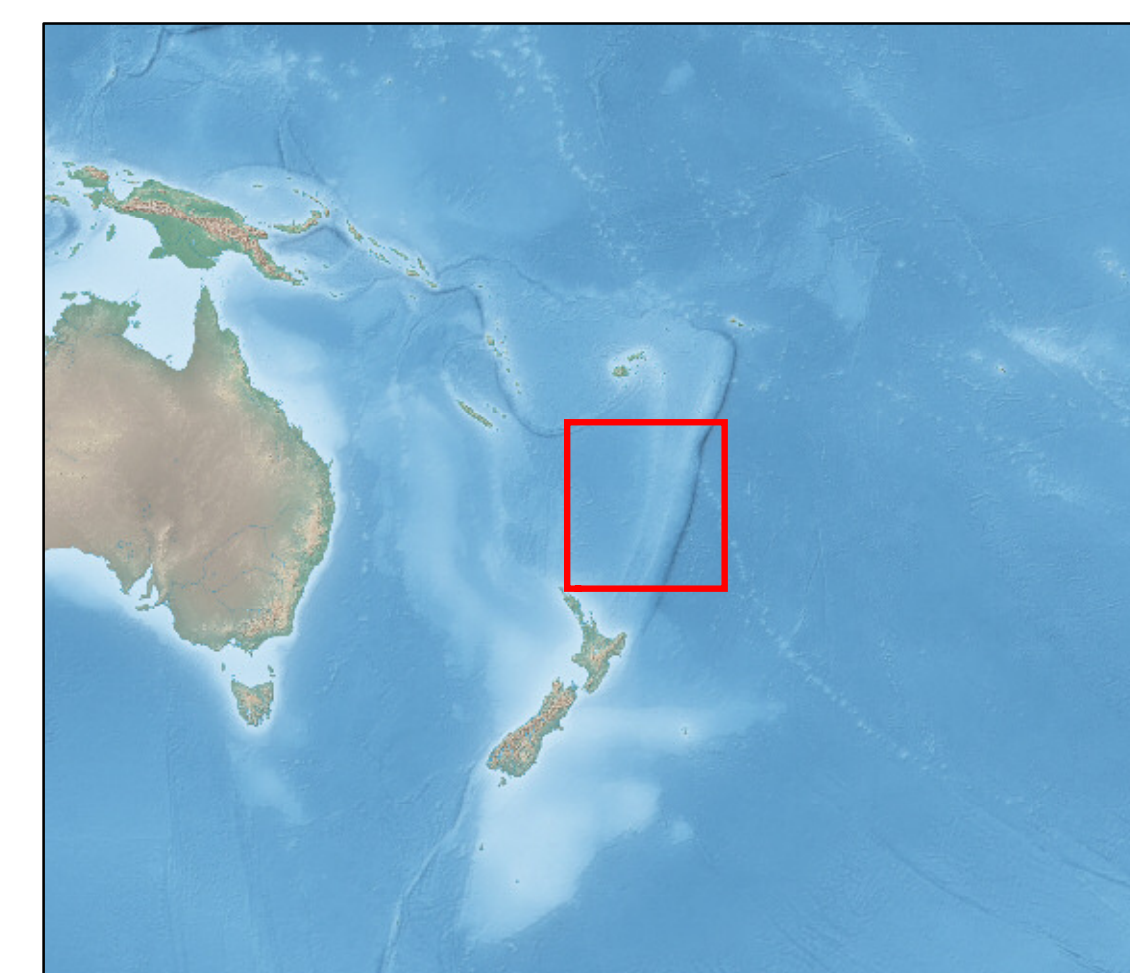


The Outer Limits of the Continental Shelf in the South Fiji Basin Region of the Lau-Colville and Tonga-Kermadec Complex

ETOPO-1 Bathymetry	Lines	Fixed Points
0m	— Outer Limit of the Continental Shelf	• 2500m + 100M
10,000m	— Fiji 200M	• 350M
	— Other State 200M	• FOS +60M
	- - - Median Line	• Fiji 200M
 Treaty Line	• Other State 200M



Scale 1:2,000,000
World Mercator Projection
WGS84
Central Meridian: 180°



1. This map was created using ESRI ArcGIS 9.3 and GeocapAS GIS software with spatially correct data referenced to the World Geodetic System 1984 Spheroid, Semimajor Axis: 6378137.000000, Semiminor Axis: 6356752.3142452, Inverse Flattening: 298.257224
2. The background gridded bathymetry is derived from ETOPO1, a public domain data set obtained from the National Oceanic and Atmospheric Administration's (NOAA) National Geodetic Data Center (NGDC).
3. The area of Republic of Fiji extended continental shelf is depicted by the darker shading.
4. Depiction of 200M lines other than the submitting State is based on the best available data at the time of analysis and should not be taken to signify acceptance or endorsement by the Republic of Fiji of the validity at international law of another State's basepoints from which they are drawn.