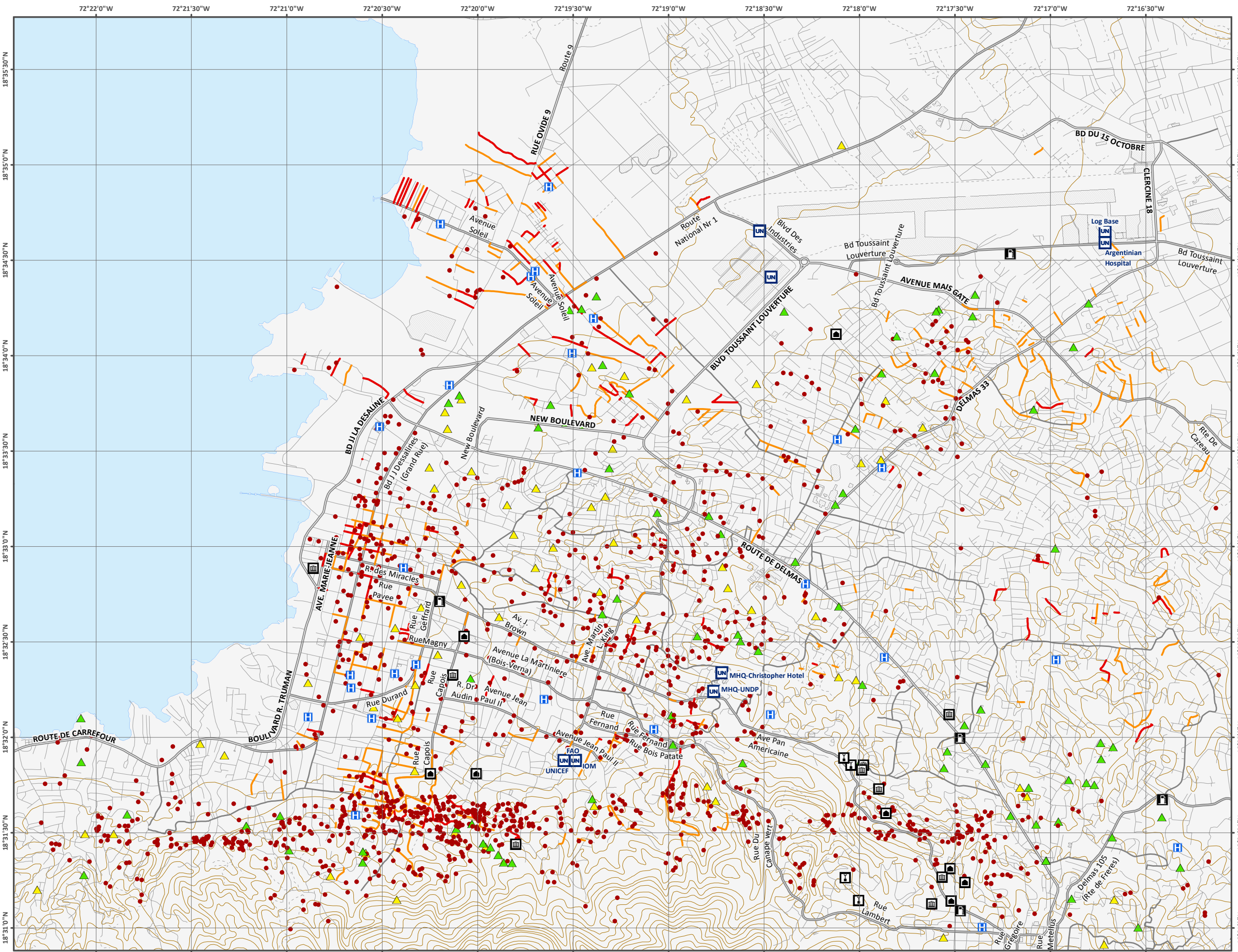
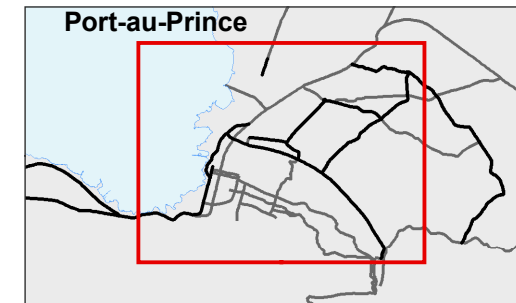
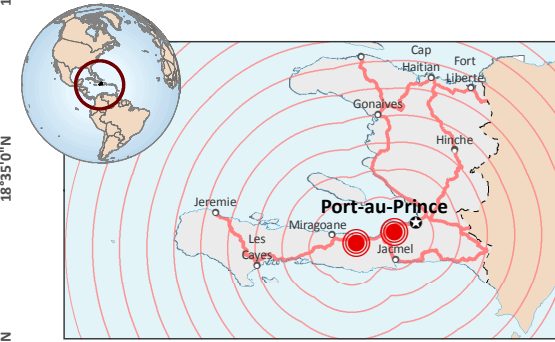
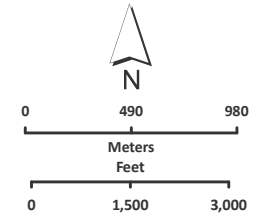


# HAITI : PORT AU PRINCE DAMAGE ASSESSMENT AS OF 13/01/2010



	Landmark		Built Up Area
	Embassy		Highway
	Gas Station National		Primary
	Hospital		Secondary Street
	Hotel		Arterial Street
			Unclassified
<b>Assessment</b>		<b>Road Condition</b>	
	Damaged Building		Limited Access
	Gathering Area		Blocked
	Spontaneous Gathering Area		



Projection: Geographic  
Unit: Meter  
Datum: WGS 84  
Data Source:  
United Nations Stabilization Mission in Haiti,  
Geographic Information Services (MINUSTAH GIS)  
Imagery courtesy GeoEye-1 (13/01/2010)

Analysis jointly conducted by  
United Nations Cartographic Section,  
and G-MOSAIC Project Partners (EU FP7-GMES)  
and German Aerospace Centre (DLR)  
*The boundaries and names shown and the designations used  
on this map do not imply official endorsement or acceptance  
by the United Nations.*

